



NAPIER
CITY COUNCIL
Te Kaunihera o Ahuriri

Napier Civic Building
231 Hastings Street
t +64 6 835 7579
e info@napier.govt.nz
www.napier.govt.nz

ORDINARY MEETING OF COUNCIL

Open Attachments Under Separate Cover

Meeting Date: Thursday 19 November 2020

Time: 10.00am

Venue: Napier War Memorial Centre
Marine Parade
Napier

TABLE OF CONTENTS

| | |
|---------------|---|
| Item 2 | Hakwe's Bay Museums Trust Annual Report for Year Ending 30 June 2020 |
| Attachment A | Hawke's Bay Museums Trust Annual Report - 30 June 20202 |

Annual Report

For the Year Ended 30 June 2020



Cover Image: Departure Lounge, 2018, Desmond Helmore (b.1940), gifted by the MTG Foundation, collection of Hawke's Bay Museums Trust, Ruawharo Tā-ū-rangi, 2019/31

Contents

| | |
|--|----|
| Hawke's Bay Museums Trust..... | 4 |
| Chairman's Report | 5 |
| Entity Information..... | 6 |
| Financial Statements | 7 |
| Notes to the Financial Statements | 11 |
| Statement of Intent | 21 |
| Auditor's Report | 24 |
| Appendix I List of Acquisitions | 28 |

The Hawke's Bay Museums Trust works to protect, maintain and develop a regional collection that is acknowledged nationally as an outstanding reflection of Hawke's Bay's history and heritage.

Hawke's Bay Museums Trust

The Hawke's Bay Museums Trust (HBMT) holds one of the most significant regional collections in New Zealand, collected over 150 years. The collection comprises a wide range of treasures documenting the unique culture and heritage of the Hawke's Bay region.

The Hawke's Bay Museums Trust works to protect, maintain and develop a regional collection that is acknowledged nationally as an outstanding reflection of Hawke's Bay's history and heritage.

The Trust's mission is to hold, protect and develop the collection for the people of the Hawke's Bay in a manner that promotes understanding of, and interest in, our cultural heritage and the arts.

The Hawke's Bay Museums Trust provides value through:

- » A regional focus allowing economies of scale and a collection of national significance.
- » Political neutrality.
- » Independent stewardship on behalf of the Hawke's Bay community and future generations.
- » Charitable status that encourages funding support.
- » A governance structure that enables input from key stakeholders including funding councils, iwi, friends and the wider community.

The Hawke's Bay Museums Trust focuses on four main goals. These goals are pursued in accordance with Museum Industry Standards (MIS).

1. To protect the collection through appropriate:

- » Storage
- » Security
- » Records Management

2. To maintain and enhance the quality of the collection through appropriate

- » Conservation
- » Accessioning
- » Decaccessioning

3. To maximise access to the collection through:

- » Exhibitions - at the Hastings City Art Gallery and MTG Hawke's Bay
- » Faraday Centre and other institutions as appropriate
- » Research - based on the Hawke's Bay Museums Trust collection
- » Archives - at MTG Hawke's Bay

4. To further develop the collection through:

- » Fundraising - by working with the Hawke's Bay Museums Foundation
- » Reserves and bequests - that are strategically and appropriately budgeted and managed
- » Relationships - that are fostered and managed to support the ongoing development of the collection.

Chairman's Report

MTG continues to develop its position as a regional institution that, in its exhibitions and its work, shows visitors the strength and extent of its collections. COVID-19 restrictions have had an obvious effect on visitor numbers during the first half of 2020, but the MTG was quick to re-open when this was possible. The Trust will continue to work with the MTG to help it achieve recognition for the importance of the work it does in Hawke's Bay.

This year all exhibitions were created from the collection, with a strong theme of engaging both Māori and families. Turuturu: Fingers, Feathers & Fibre was curated in partnership with Nigel How from Wairoa and looks at a range of range of woven textiles from the collection. Mystery of History was developed in collaboration with a group of junior curators to ensure the exhibition would work for children. Rongonui taonga mai ngā tāngata, ngā wāhi, me ngā takahanga: Treasured taonga from people, places and events is based on a combination of research and oral histories, including a series of interviews with kaumatua.

Tender is the Night provides a look at Art Deco through the lens of F Scott Fitzgerald and Zelda. Our most recent exhibition Waka Kōrero Māori utilises collection items as a mechanism for encouraging understanding of the te reo Māori alphabet and learning animal names, through the use of visual aids, video recording and a 'chatterbox' game. Longer term collection based galleries continue including; Tēnei Tonu, 1931 Hawke's Bay Earthquake and Silver: heirlooms from the collection, along with design stories displayed in the stairwell cases.

The MTG Foundation continues to support the development of the collection and this year purchased works by Des Helmore, Departure Lounge, and Richard Wotton, photographs extending the regional representation in his series of Art Deco domestic houses in Hawke's Bay. David Trubridge's Baskets of Knowledge trio of lights was purchased by the Trust for the collection.

As always generosity from the community saw many items gifted to the collection throughout the year, including a significant amount of Louis Hay archive material and Napier Hospital archives. Conservation treatment was completed on three paintings and one dish. A bound book of plans was digitised for preservation, and a number of vulnerable negatives are currently being digitised for the same purpose.

There has been increased engagement with the collections online during COVID-19 lockdown, with 29,660 online catalogue searches in total this year, Tours at the off-site store have continued to be popular, as have collection-based Facebook posts. Visitor

numbers are down on last year due to lockdown, with a total of 524,733 visitors through the building. Visitor feedback continues to be very positive.

The Joint Working Group (Napier City Council, Hastings District Council, Ngāti Kahungunu and Hawke's Bay Museums Trust) has completed an initial investigation to identify possible buildings and/or greenfield sites to house long-term storage. A preferred option has been identified in Hastings and more detailed investigation on the viability of the building, including determining overall cost, is underway. Napier City Library continues to reside in the MTG building.

The Trust Board noted with regret the passing of Dave Prebensen on 26 July 2019. Dave was the driving force behind the development of the Hawke's Bay Museum of Technology Society, formed on 7 July 1979, eventually becoming the Faraday Centre. In May 1993 all assets and operation were transferred to the Hawke's Bay Cultural Trust (now the Hawke's Bay Museums Trust). Board members greatly appreciate the years of dedication and hard work that Dave put into initiating and running this hands-on museum for the benefit of the community and visitors.

The Trust has once again maintained a stable financial position throughout the year. Steadily reducing investment interest rates have, as predicted in my report last year, had an impact on the Trust. Reduced investment interest rates have adversely affected the 2019/20 interest income, which is down by 10% from last year's result. However donations income has more than made up for the shortfall, as visitors to MTG have given towards the collection through the koha receptacle in the building's main foyer. Furthermore the Trust was pleased to accept financial donations from three bequests during 2019/20, which have been added to the Special Funds available for further collection acquisitions or restoration of existing collection items. The income from 'Donations - Acquisitions' reflects the valuation of items gifted to the Trust during the 2019/20 financial year.



Richard Grant

Entity Information

Entity Information For the Year Ended 30 June 2020

1. Legal Name

Hawke's Bay Museums Trust (Incorporated) - (the Trust).

2. Type of Entity and Legal Basis

The Hawke's Bay Museums Trust (Incorporated) is registered under the Charitable Trusts Act 1957 and is registered as a charitable entity under the Charities Act 2005 (Registration Number CC24406).

The Trust is controlled by Hastings District Council and Napier City Council, and is a council-controlled organisation as defined by in Section 6 of the Local Government Act 2002.

The registered office of the Trust is at the MTG, Herschell Street, Napier.

3. The Trust's General Objectives

- 3.1 To hold and protect its collection, known as 'The Regional Collection,' for the people of Hawke's Bay.
- 3.2 To encourage the development of quality cultural facilities capable of accessing or drawing upon the collection within Hawke's Bay.
- 3.3 To advance and promote cultural heritage and the arts through the use of the collection.
- 3.4 To oversee collection management through the development of collection policy, conservation and risk management strategies via a contract for services with Napier City Council.
- 3.5 To oversee collection development through the regulation of the acquisition and disposal of collection items.
- 3.6 To manage the bequests vested in the Trust in a way in which maximises benefit to the collection.

4. Structure of the Trust's Operations

The trust comprises of a Board of five trustees who oversee the governance of the Trust. The trustees are appointed as follows:

- 4.1 One appointed by the Napier City Council (Councillor Tania Wright);
- 4.2 One appointed by the Hastings District Council (George Lyons);
- 4.3 One appointed by the Hawke's Bay Museums Foundation Charitable Trust Incorporated (Johanna Mouat);
- 4.4 One appointed by Ngati Kahungunu Iwi Incorporated (Mike Paku);
- 4.5 The Chairperson (Richard Grant) who is jointly appointed by Hastings District Council and Napier City Council.

The Trust's administrative and accounting functions are conducted by Napier City Council through a negotiated 'Contract for Service.'

5. Main Sources of the Trust's Cash and Resources

The Trust receives operating grants from Hastings District Council and Napier City Council. Funds are also received from donations, and interest income on the Trust's investments, which are applied to acquisitions, restoration work and other Trust initiatives by way of special funds.

Financial Statements

Statement of Financial Position as at 30 June 2020

| | Note | 2020 \$ | 2019 \$ |
|--------------------------------------|-------|-------------------|-------------------|
| Current Assets | | | |
| Bank Accounts and Cash | 5 | 20,059 | 36,487 |
| Investments | 5 | 655,260 | 625,260 |
| Prepayments & Accrued Revenue | 8 | 6,692 | 3,409 |
| Total Current Assets | | 682,011 | 665,156 |
| Non Current Assets | | | |
| Artworks and Collection | 9 | 41,086,911 | 40,983,614 |
| Total Non Current Assets | | 41,086,911 | 40,983,614 |
| Total Assets | | 41,768,922 | 41,648,770 |
| Current Liabilities | | | |
| Accounts Payable and Accruals | 10 | 5,445 | 5,500 |
| GST Payable | 10 | (1,312) | 281 |
| Unspent Grants | | 897 | 5,137 |
| Total Current Liabilities | | 5,030 | 10,918 |
| Non-Current Liabilities | | | |
| Trust Funds Held on Behalf | 11 | 75,260 | 75,260 |
| Total Non-Current Liabilities | | 75,260 | 75,260 |
| Total Liabilities | | 80,290 | 86,178 |
| Accumulated Funds | | | |
| Retained Earnings | 6 | 1,611,217 | 1,564,319 |
| Asset Revaluation Reserve | 6 | 39,530,051 | 39,474,064 |
| Special Funds | 6 & 7 | 547,364 | 524,209 |
| Total Accumulated Funds | | 41,688,632 | 41,562,592 |
| Total Funds Employed | | 41,768,922 | 41,648,770 |

The Trust Board of Hawke's Bay Museums Trust authorised these financial statements for issue on 23 September 2020 and are signed on behalf of the Board by:



Richard Grant - Chairman



Tania Wright - Trustee

Statement of Financial Performance For the Year Ended 30 June 2020

| | Note | 2020 \$ | 2019 \$ |
|---|------|------------------|------------------|
| Operating Revenue | | | |
| Interest Received - Bank | | 17,493 | 19,435 |
| Hastings District Council | 2 | 598,760 | 598,198 |
| Napier City Council | 2 | 583,760 | 583,199 |
| Donations - Specified Funds | 3 | 14,500 | - |
| Donations - General | 3 | 9,317 | 4,658 |
| Donations - Acquisitions | 3 | 43,405 | 801,201 |
| Donations - Faraday Centre Assets | 3 | - | 500 |
| Marian Holt Grant Revenue | 3 | 4,240 | 2,889 |
| Other Income | | 6 | - |
| Total Operating Income | | 1,271,481 | 2,010,080 |
| Less: Operating Expenses | | | |
| Audit Fees | | 5,295 | 5,275 |
| Accounting Charge | 12 | 27,900 | 16,000 |
| Accounting Software Charges | | 122 | - |
| General Expenses | | 93 | 49 |
| Legal Costs | | 1,620 | - |
| Marian Holt Grant Expenditure | | 4,240 | 2,889 |
| Conservation | | 14,250 | - |
| Insurance | | 2,288 | 2,060 |
| Management Fees | 12 | 1,145,620 | 1,155,977 |
| Total Operating Expenses | | 1,201,428 | 1,182,250 |
| Net Surplus/(Deficit) - Operating Income | | 70,053 | 827,830 |



Image Ref: Kete huruhuru, 1930s, gifted by the McRae family, collection of Hawke's Bay Museums Trust, Ruawhoro
Tā-ū-rangi, 2019/42/1

Statement of Movements in Equity For the Year Ended 30 June 2020

| | Note | 2020 \$ | 2019 \$ |
|--|----------|-------------------|-------------------|
| Net surplus/(deficit) for year | | | |
| Allocated to: | | | |
| Retained earnings | | 28,743 | 808,395 |
| Special Funds | | 41,310 | 19,435 |
| Net surplus/(deficit) for year | | 70,053 | 827,830 |
| Opening balance of Equity at 1 July 2019 | | 41,562,592 | 40,734,762 |
| Prior period adjustment | | - | - |
| Movement in asset revaluation reserve | | 55,987 | - |
| Transfer of Restricted expenditure from Restricted Reserve | | - | - |
| Transfer of conservation expenditure from Conservation Reserve | | - | - |
| Closing balance of Equity at 30 June 2020 | 6 | 41,688,632 | 41,562,592 |

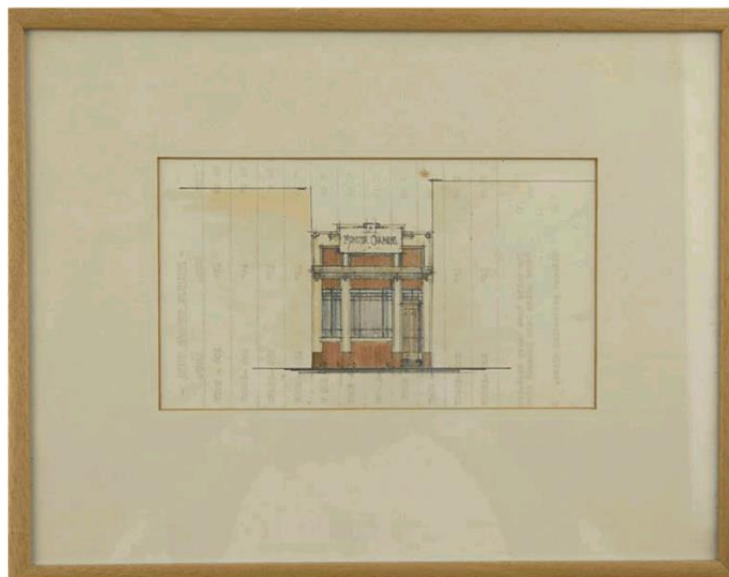


Image Ref: Architectural drawing, Munster Chambers, 1930s, James Augustus Louis Hay (b.1881, d.1948), gifted by Ruth Munro on behalf of Margaret Hay, collection of Hawke's Bay Museums Trust, Ruawhoro Tā-ū-rangi, 2019/23/69

Statement of Cashflows For the Year Ended 30 June 2020

| | Note | 2020 \$ | 2019 \$ |
|---|----------|--------------------|--------------------|
| Cashflows From Operating Activities | | | |
| Cash was provided from: | | | |
| Grants From Councils | | 1,182,520 | 1,181,397 |
| Grants Marian Holt Trust | | - | - |
| Specified Donations | | 14,500 | 4,658 |
| General Donations | | 9,317 | - |
| Other Operating Revenue | | 6 | - |
| Interest Received | | 14,210 | 23,934 |
| Goods and Services Tax (net inflow) | | (1,476) | (459) |
| | | 1,219,077 | 1,209,530 |
| Cash was disbursed to: | | | |
| Audit Fee | | (5,350) | (5,275) |
| Management Fee & Education Grant to NCC | | (1,145,620) | (1,155,977) |
| Accounting Fee to NCC | | (27,900) | (32,090) |
| Marian Holt Grant Expenditure | | (4,240) | (2,889) |
| Conservation Works | | (14,250) | - |
| Insurance & Legal Costs | | (3,908) | (2,060) |
| Other expenses | | (332) | (49) |
| | | (1,201,600) | (1,198,340) |
| Net Cashflows From Operating | 4 | 17,477 | 11,190 |
| Cashflows From Investing Activities | | | |
| Cash was provided from: | | | |
| Sale of collection assets | | - | - |
| Cash was disbursed to: | | | |
| Purchase of collection assets | | (3,905) | (2,489) |
| Net Cashflows From Investing | | (3,905) | (2,489) |
| Cashflows From Financing Activities | | | |
| Cash was provided from: | | | |
| Bank bonds (on behalf HB Trustees Ltd - three trusts) | | - | - |
| Net Cashflows From Financing | | - | - |
| Net Cashflows | | 13,572 | 8,701 |
| Add Opening Cash Balance (Including Investments) | | 661,747 | 653,046 |
| Closing Cash Balance 30 June 2020 | | 675,319 | 661,747 |

Notes to the Financial Statements

1. Statement of Accounting Policies

Reporting Entity

The Hawke's Bay Museums Trust (Incorporated) is registered under the Charitable Trusts Act 1957 and is registered as a charitable entity under the Charities Act 2005.

General accounting policies

The general accounting policies recognised as appropriate for the measurement and reporting of results, and financial position, under the historical cost method as modified by the revaluation of certain assets, have been followed in the preparation of these financial statements.

The Board has elected to apply PBE-SFR-A (PS) Public Benefit Entity Simple Format Reporting - Accrual (Public Sector) on the basis that the Trust does not have public accountability (as defined) and has total annual expenses of less than \$2 million.

The financial statements are prepared on the assumption that the Trust will continue to operate in the foreseeable future.

All transactions in the financial statements are reported using the accrual basis of accounting.

Significant accounting policies

Bank Accounts and Cash

Bank Accounts and Cash comprise cheque or savings accounts and deposits held on call with banks.

Investments

Investments comprise bank term deposits.

Accounts Receivable

Accounts receivable are stated at their estimated net realisable value.

Grants

Grants received are recognised in the Statement of Financial Performance when the requirements under the grant agreement have been met. Any grants for which the requirements under the grant agreement have not been completed will be carried as liabilities until the conditions have been fulfilled.

Donated Assets

Revenue from donated assets is recognised upon receipt of the asset if the asset has a useful life of more than 12 months and the value of the asset is readily obtainable and significant.

Artworks and Collection

The Trust has elected to apply Public Sector Accounting Standard 17 - Property, Plant and Equipment (PBE IPSAS 17). Items contained in collection assets tend to have an indefinite life and are generally not of a depreciable nature. Depreciation is therefore not applicable and collection assets are carried at fair value. Carrying values are reviewed every three years to ensure those values are not materially different to fair value.

Collection assets are measured at fair value and consist of the following classes:

- Library Archives
- Textiles and Associated Items
- Taonga Māori
- Fine Arts
- Social History
- Pottery, Porcelain, Glass, Silver
- Ethnology
- Faraday Centre

Revaluations

The net revaluation results are credited or debited to other comprehensive revenue and expense and are accumulated to an asset revaluation reserve in equity for that class of asset. Where this would result in a debit balance in the asset revaluation reserve, this balance is recognised in the surplus or deficit. Any subsequent increase on revaluation that reverses a previous decrease in value recognised in the surplus or deficit will be recognised first in the surplus or deficit up to the amount previously expensed, and then recognised in other comprehensive revenue and expense.

Creditors and Accrued Expenses

Creditors and accrued expenses are measured on the amount owing.

GST

The Trust is registered for GST. The Statement of Financial Performance has been prepared so that all components are stated net of GST. All items in the Statement of Financial Position are stated net of GST, with the exception of receivables and payables, which include GST invoiced.

Interest Revenue

Interest revenue is recorded as it is earned during the year.

Income Tax

Hawke's Bay Museums Trust is exempt from paying income tax.

Changes in Accounting Policies

There have been no changes in accounting policies for the 2019/20 financial year.

*Notes to the Financial Statements continue***2. Grants - Councils**

The Hawke's Bay Museums Trust is jointly funded by Napier City Council and Hastings District Council.

| | 2020 \$ | 2019 \$ |
|---------------------------|------------------|------------------|
| Hastings District Council | 598,760 | 598,198 |
| Napier City Council | 583,760 | 583,199 |
| | 1,182,520 | 1,181,397 |

3. Grants and Donations - other

| | 2020 \$ | 2019 \$ |
|---------------------------------------|---------------|----------------|
| Collection Additions | 43,405 | 801,201 |
| Grants (Marian Holt Grant) | 4,240 | 2,889 |
| Collection Additions - Faraday Centre | - | 500 |
| Donations - General | 9,317 | 4,658 |
| Donations - Specified Funds | 14,500 | - |
| | 71,462 | 809,248 |

4. Reconciliation of 'Net Surplus' to 'Net Cashflow from Operating Activities'

| | 2020 \$ | 2019 \$ |
|--|---------------|---------------|
| Operating surplus/(deficit) | 70,053 | 827,830 |
| (Donated)/vested assets | (43,405) | (801,701) |
| Cash surplus/(deficit) from operations | 26,648 | 26,129 |
| Add/(less) movements in working capital items: | | |
| Prepayments & accrued revenue | (3,283) | 4,499 |
| Accounts payable and accruals | (55) | (16,090) |
| Increase in unspent grants | (4,240) | (2,889) |
| Loss on Disposals | - | - |
| Net GST Movement | (1,593) | (459) |
| Net cash inflow/(outflow) from operating activities | 17,477 | 11,190 |

5. Cash and Bank

| | 2020 \$ | 2019 \$ |
|--|----------------|----------------|
| Bank Accounts and Cash | | |
| Westpac Bank - Current Account | 20,059 | 36,487 |
| Total Bank Accounts and Cash | 20,059 | 36,487 |
| Investments | | |
| Westpac Term Deposits - General Funds | 580,000 | 550,000 |
| Westpac Term Deposits - Trusts Held on Behalf | | |
| M S Spence Trust | 33,387 | 33,387 |
| L D Bestall Trust | 20,834 | 20,834 |
| Estate L D Bestall | 21,039 | 21,039 |
| Total Investments | 655,260 | 625,260 |
| Total Investments Bank Accounts and Cash | 675,319 | 661,747 |

*Notes to the Financial Statements continue***6. Movements in equity**

| | Year Ended 30 June 2020 \$ | Year Ended 30 June 2019 \$ |
|--|----------------------------------|----------------------------------|
| Special reserves | | |
| Restricted reserves | | |
| Opening Balance 1 July 2019 | 14,594 | 14,115 |
| Grants, Bequests and Donations income | 265 | - |
| Interest income | 435 | 479 |
| Transfer to Other Reserves | - | - |
| Restricted Reserves Purchases for Year | - | - |
| Closing Balance Special Reserves | 15,294 | 14,594 |
| Unrestricted Reserves | | |
| Opening Balance 1 July 2019 | 92,850 | 89,801 |
| Grants, Bequests and Donations income | 1,685 | - |
| Interest income | 2,767 | 3,049 |
| Grants and Donations | - | - |
| Transfer to Other Reserves | - | - |
| Transfer to Napier City Council | - | - |
| Closing Balance Unrestricted Reserves | 97,302 | 92,850 |
| Acquisitions Reserve | | |
| Opening Balance 1 July 2019 | 379,203 | 369,199 |
| Grants, Bequests and Donations income | 13,912 | - |
| Interest Income | 11,346 | 12,493 |
| Acquisitions Donations Received | - | - |
| Proceeds from De-accession | - | - |
| Acquisitions Purchases for Year | (3,905) | (2,489) |
| Closing Balance Acquisitions Reserve | 400,556 | 379,203 |
| Conservation Reserve Fund | | |
| Opening Balance 1 July 2019 | 28,489 | 27,553 |
| Grants, Bequests and Donations income | 7,955 | - |
| Interest Income | 748 | 936 |
| Conservations Donations Received | - | - |
| Conservation Purchases for Year | (14,250) | - |
| Closing Balance Conservation Reserve | 22,942 | 28,489 |
| Trusts Held on Behalf | | |
| Opening Balance 1 July 2019 | 9,073 | 6,595 |
| Interest Income | 2,197 | 2,478 |
| Acquisitions for Year | - | - |
| Closing Balance Trusts Held on Behalf | 11,270 | 9,073 |
| Total Special Reserves | 547,364 | 524,209 |

Notes to the Financial Statements continue

6. Movements in equity - continued

| | Year Ended 30 June 2020 \$ | Year Ended 30 June 2019 \$ |
|---|----------------------------------|----------------------------------|
| Asset Revaluation Reserve | | |
| Opening Balance 1 July 2019 | 39,474,064 | 39,474,064 |
| Movement in Asset Revaluation Reserve | 55,987 | - |
| Closing Balance Revaluation Reserve | 39,530,051 | 39,474,064 |
| Retained earnings | | |
| Opening Balance 1 July 2019 | 1,564,319 | 753,435 |
| Net surplus/(deficit) for year | 28,743 | 808,395 |
| Transfer of capital expenditure from restricted reserve | - | - |
| Transfer of donations to acquisitions reserve | - | - |
| Transfer of proceeds of deaccession to acquisitions reserve | - | - |
| Transfer of capital expenditure from acquisitions reserve | 3,905 | 2,489 |
| Transfer of donations to conservation reserve | - | - |
| Transfer of capital expenditure from conservation reserve | 14,250 | - |
| Transfer of capital expenditure to conservation reserve | - | - |
| Transfer of donations to restricted reserve | - | - |
| Closing Balance Retained Earnings | 1,611,217 | 1,564,319 |
| | 41,688,632 | 41,562,592 |

Restricted Reserves - Consist of reserves which have conditions of use attached to the funds held within the reserve.

Unrestricted Reserves - Funds held in equity which have no restrictions on conditions of use.

Acquisitions Reserve - Funds which the Trustees have identified and set aside for the specific purpose of acquisition of items for the Museum collection.

Conservation Reserve Fund - Funds which the Trustees have identified and set aside for applying to the cost of conservation of collection items.



Image Ref: Napier CBD after earthquake, 1930s, gifted by Ruth Munro on behalf of Margaret Hay, collection of Hawke's Bay Museums Trust, Ruawhoro Tā-ū-rangi, 2019/23/137

Notes to the Financial Statements continue

7. Special Funds

| | Opening Balance as at 1 July 2019 | Transfers | Grants & Bequests Received | General Donations Received | Expenditure From Special Funds for 12 Months to 30 Jun 2020 | De-accessions for 12 Months to 30 Jun 2020 | Allocation of Proportion for Interest Income | Closing Balance as at 30 Jun 2020 |
|------------------------------------|-----------------------------------|-----------|----------------------------|----------------------------|---|--|--|-----------------------------------|
| Restricted Reserves | | | | | | | | |
| QEII Award Fund | 14,594 | - | - | 265 | - | - | 435 | 15,294 |
| | 14,594 | - | - | 265 | - | - | 435 | 15,294 |
| Unrestricted Reserves | | | | | | | | |
| Lilliput Building Fund | 92,850 | - | - | 1,685 | - | - | 2,767 | 97,302 |
| | 92,850 | - | - | 1,685 | - | - | 2,767 | 97,302 |
| Acquisitions Reserve Fund | | | | | | | | |
| Millin Estate | 280,497 | - | - | 5,093 | - | - | 8,359 | 293,949 |
| LJ Sanderson | 82,950 | - | - | 1,506 | - | - | 2,472 | 86,928 |
| M L Holt | 13,609 | - | - | 226 | (2,326) | - | 371 | 11,880 |
| James Walker | 1,544 | - | - | 13 | (1,579) | - | 22 | - |
| Webb Trust (Acquisitions) | 603 | - | 7,000 | 74 | - | - | 122 | 7,799 |
| | 379,203 | - | 7,000 | 6,912 | (3,905) | - | 11,346 | 400,556 |
| Conservation Reserve Fund | | | | | | | | |
| Dobson Trust | 5,030 | - | - | 44 | (5,147) | - | 73 | - |
| B Horne | 9,643 | - | - | 136 | (4,293) | - | 223 | 5,709 |
| M L Holt | 13,490 | - | - | 245 | - | - | 402 | 14,137 |
| R & D Crowther | - | - | 500 | 4 | - | - | 7 | 511 |
| Estate Keith Stichbury | - | - | 1,000 | 9 | - | - | 15 | 1,024 |
| Other - FHBAG Care Fund | 326 | - | - | 6 | - | - | 10 | 342 |
| Webb Trust (Conservation) | - | - | 6,000 | 11 | (4,810) | - | 18 | 1,219 |
| | 28,489 | - | 7,500 | 455 | (14,250) | - | 748 | 22,942 |
| Total HBMT Special Funds | 515,136 | - | 14,500 | 9,317 | (18,155) | - | 15,296 | 536,094 |
| Trusts Held on Behalf | | | | | | | | |
| M S Spence Trust | 4,026 | - | - | - | - | - | 975 | 5,001 |
| L D Bestall Trust | 2,484 | - | - | - | - | - | 608 | 3,092 |
| Estate L D Bestall | 2,563 | - | - | - | - | - | 614 | 3,177 |
| Total Trusts Held on Behalf | 9,073 | - | - | - | - | - | 2,197 | 11,270 |
| Total Special Funds | 524,209 | - | 14,500 | 9,317 | (18,155) | - | 17,493 | 547,364 |

*Notes to the Financial Statements continue***8. Accounts Receivable, Accrued Revenue & Prepayments**

| | 2020 \$ | 2019 \$ |
|------------------|--------------|--------------|
| Interest Accrued | 6,692 | 3,409 |
| | 6,692 | 3,409 |



Image Ref: Hawke's Bay Militia waistcoat, 19th century, gifted by Diana Morris, collection of Hawke's Bay Museums Trust, Ruawharo Tā-ū-rangi, 2019/38

Notes to the Financial Statements continue

9. Artworks and Collections

Carrying values of the collection assets are reviewed at least every five years to ensure those values are not materially different to fair value.

The Faraday Centre Collection was valued by independent registered valuer Craig S Scoullar MPINZ of Asset Valuations Ltd as at 30 June 2020 using fair value. The other Museum Art & Collection Assets were valued by independent registered valuer Jessica Pearlless MPINZ of Paragon Matter Limited as at 30 June 2018 using fair value. The basis for both valuations is 'Estimated Market Value.'

| | Library Archives | Textiles & Associated Items | Taonga Maori | Fine Arts | Social History | Pottery Porcelain Glass Silver | Ethnology | Subtotal | Faraday Centre | Total |
|--|---------------------|-----------------------------------|-----------------|--------------|-------------------|---|-----------|------------|-------------------|------------|
| Carrying amount at 1 July 2018 | 1,766,252 | 786,457 | 25,436,344 | 9,037,842 | 982,043 | 418,390 | 1,267,348 | 39,694,676 | 484,748 | 40,179,424 |
| Acquisitions | - | - | - | - | 2,489 | - | - | 2,489 | - | 2,489 |
| Donations | 61,360 | 840 | 9,945 | 725,000 | 3,786 | 270 | - | 801,201 | 500 | 801,701 |
| Deaccessions | - | - | - | - | - | - | - | - | - | - |
| Revaluation | - | - | - | - | - | - | - | - | - | - |
| Carrying amount at 30 June 2019 | 1,827,612 | 787,297 | 25,446,289 | 9,762,842 | 988,318 | 418,660 | 1,267,348 | 40,498,366 | 485,248 | 40,983,614 |
| Carrying amount at 1 July 2019 | 1,827,612 | 787,297 | 25,446,289 | 9,762,842 | 988,318 | 418,660 | 1,267,348 | 40,498,366 | 485,248 | 40,983,614 |
| Acquisitions | 649 | - | - | - | 61 | 3,195 | - | 3,905 | - | 3,905 |
| Donations | 28,866 | 3,830 | 1,200 | 1,725 | 2,979 | 4,805 | - | 43,405 | - | 43,405 |
| Deaccessions | - | - | - | - | - | - | - | - | - | - |
| Revaluation | - | - | - | - | - | - | - | - | 55,987 | 55,987 |
| Carrying amount at 30 June 2020 | 1,857,127 | 791,127 | 25,447,489 | 9,764,567 | 991,358 | 426,660 | 1,267,348 | 40,545,676 | 541,235 | 41,086,911 |

The fair value assessment at 30 June 2020 of the Artworks and Collections was undertaken in the midst of the international COVID-19 pandemic. Given the uncertain impact the pandemic will have on the markets for the items that are held in the collection long term, the valuers agreed that the 2019 value was considered stable and a suitable reflection of the market as at 30 June 2020. The valuers believed that the best action to take in the 2020 valuation methodology was to consider that the value of heritage assets 'hold' value until time has passed and they are able to consider any significant up or downturns to trade in relevant markets. Early activity in the fine art market as an example indicated a willingness to trade, strong prices and transactions reflected across the market in the months since 30 June 2020.

*Notes to the Financial Statements continue***10. Accounts Payable & Accruals**

| | 2020 \$ | 2019 \$ |
|--|------------|------------|
| Accounts Payable & Accruals - Audit Fees | 5,445 | 5,500 |
| GST Payable | (1,312) | 281 |
| | 4,133 | 5,781 |

11. Non-Current Liabilities

| | 2020 \$ | 2019 \$ |
|--------------------|------------|------------|
| M S Spence Trust | 33,387 | 33,387 |
| L D Bestall Trust | 20,834 | 20,834 |
| Estate L D Bestall | 21,039 | 21,039 |
| | 75,260 | 75,260 |

12. Related Parties

Hastings District Council and Napier City Council are related parties, to the extent that they contribute funds and are represented on the Board.

The Hawkes Bay Museums Trust has contracted Napier City Council to provide administrative and accounting services for the Trust's operations. Payment for these services during the financial year was \$27,900 (2019: \$16,000).

The Hawkes Bay Museums Trust has also contracted Napier City Council to provide administrative and management services specifically for the care and management of the collection. Payment for services during the financial year was \$1,145,620 (2019: \$1,155,977) as follows:

| Napier City Council Management Fee - Services Provided: | 2020 \$ | 2019 \$ |
|---|------------------|------------------|
| Buildings and Maintenance | 72,504 | 83,160 |
| Offsite Storage Lease Rental | 155,000 | 151,000 |
| Energy Costs | 82,101 | 114,000 |
| Collection Direct Costs | 27,460 | 22,820 |
| Collection Insurance | 102,302 | 98,600 |
| Administrative Expenses | 23,634 | 26,430 |
| Employee Costs | 472,035 | 515,637 |
| Overheads | 195,584 | 129,330 |
| | 1,130,620 | 1,140,977 |
| Annual Education Grant | 15,000 | 15,000 |
| Total Management Fee Charged | 1,145,620 | 1,155,977 |

The Board members are not paid (2019: nil).

13. Commitments

| | 2020 \$ | 2019 \$ |
|---|------------|------------|
| Operating Commitments | | |
| Conservation - Digitising of Nitrate Negatives | - | 1,000 |
| Capital Commitments | | |
| Acquisitions - Colenso Biography | - | 649 |
| Acquisitions - Photographs (4) of Napier earthquake | 1,518 | - |

Notes to the Financial Statements continue

14. Contingencies

| | 2020 \$ | 2019 \$ |
|-------------------------|------------|------------|
| Known contingent events | - | - |

15. Statement of Intent

In its 2019/20 Statement of Intent the Trust set financial targets for the year. The following table summarises actual results against those targets, with explanations for variances.

| | 2019/20 Actual | 2019/20 Target | Variance | |
|--|-------------------|-------------------|---------------|---|
| Revenue | | | | |
| Council Funding (NCC & HDC) | 1,182,520 | 1,182,520 | - | |
| Interest Income | 17,493 | 20,100 | (2,607) | |
| Cash Donations | 23,817 | 5,000 | 18,817 | |
| Collection Donations | 43,405 | - | 43,405 | Reflects valuation of donated collection items. |
| Other Income (Including Grants) | 4,246 | - | 4,246 | Includes Marian Holt Grant released. |
| Total Revenue | 1,271,481 | 1,207,620 | 63,861 | |
| Expenses | | | | |
| Management Fee and Education Grant | 950,620 | 950,620 | - | |
| Off-Site Storage | 180,000 | 180,000 | - | |
| Education Grant | 15,000 | 15,000 | - | |
| Trust Admin & Management | 27,900 | 27,900 | - | |
| Audit Insurance Legal etc | 9,203 | 9,000 | (203) | |
| Other Expenditure (Including Grants) | 4,455 | - | (4,455) | Marian Holt Grant expended. |
| Conservation | 14,250 | 12,550 | (1,700) | |
| Accessions | 3,905 | 12,550 | 8,645 | William Colenso letters and HB A&P medals. |
| Total Expenses | 1,205,333 | 1,207,620 | 2,287 | |
| Surplus/(Deficit) | 66,148 | - | 66,148 | |
| Ratio of Shareholders Funds to Total Assets | 99.8% | 95.0% | 4.8% | |



Image Ref: Plan, Napier Cemetery, 1884, Alfred Jarman (b.1835, d.1916), gifted by Napier City Council, collection of Hawke's Bay Museums Trust, Ruawhoro Tā-ū-rangi, 2020/9

Statement of Intent

Hawke's Bay Museums Trust

Policies and Objectives Regarding Ownership and Control

The Hawke's Bay Museum Trust is a Council Controlled Organisation as defined by Section 6 of the Local Government Act 2002.

The objectives of the Trust are:

- » To hold and protect the regional collection for the people of Hawke's Bay
- » To encourage the development of quality cultural facilities capable of accessing or drawing upon the collection within Hawke's Bay
- » To advance and promote cultural heritage and arts through the use of the collection
- » To oversee collection management through the development of collection policy, conservation and risk management strategies via a contract for services with the Napier City Council
- » To oversee collection development through the regulation of the acquisition and disposal of collection items
- » To manage the bequests vested in the Trust in a way which maximises benefit to the collection
- » There has been no change between the intended and actual nature and scope of activities delivered.

Performance Targets

The key performance targets and performance results (as reflected in the Trust's Annual Report for 2019/20) are:

| Key Result Area | Performance Indicator | Target /Reporting Method | |
|--------------------|---|---|---|
| | | 2019/20 Target | 2019/20 Actual |
| Protection | Full insurance cover is provided for the collection. | Yes | Yes |
| | Collections are stored in an acceptable environment | No items reported to have suffered deterioration due to the environment | No damage |
| Quality | Every item accessioned into the collection has undergone a detailed selection process within the framework of the Collection Strategy | Yes | Yes |
| | De-accessions are managed in accordance with the Collection Strategy and reported to the Board | Yes | Yes |
| Access | HBMT collections are used for academic and personal research | 1,500 enquiries | 29,660 online catalogue sessions 554 enquiries |
| | Collections are made available to the public through quality exhibitions | Minimum of five collection based exhibitions | Five Turuturu, Mystery of History, Rongonui and Tender is the Night, He Waka Kōrero Māori |
| Development | Bequests fund income is used in the manner determined by the donor | Yes | Yes |
| | Conservation funds income is used solely for collection care | Yes | Yes |
| | Joint HBMT/Te Rōpū Kaiawhina Taonga meeting held | 1 per annum | 0 |

The Trust recognises and appreciates the ongoing Collection acquisition support that it receives from the Hawke's Bay Museums Foundation and many private benefactors.



Image Ref: Earthquake damaged building, Napier, gifted by Viv Green, collection of Hawke's Bay Museums Trust, Ruawharo Tā-ū-rangi, 2020/2/10



Image Ref: Wedding dress, 1920s, gifted by Ann Everett, collection of Hawke's Bay Museums Trust, Ruawharo Tā-ū-rangi, 2020/12/1

Independent Auditor's Report

AUDIT NEW ZEALAND
Mana Arotake Aotearoa

Independent Auditor's Report

To the readers of Hawke's Bay Museums Trust's financial statements and performance information for the year ended 30 June 2020

The Auditor-General is the auditor of Hawke's Bay Museums Trust (the Trust). The Auditor-General has appointed me, Karen Young, using the staff and resources of Audit New Zealand, to carry out the audit of the financial statements and performance information of the Trust on his behalf.

Opinion

We have audited:

- the financial statements of the Trust on pages 7 to 19, that comprise the statement of financial position as at 30 June 2020, the statement of financial performance, statement of movements in equity and statement of cashflows for the year ended on that date and the notes to the financial statements that include accounting policies and other explanatory information; and
- the performance information of the Trust on page 21.

In our opinion:

- the financial statements of the Trust on pages 7 to 19:
 - present fairly, in all material respects:
 - its financial position as at 30 June 2020; and
 - its financial performance and cash flows for the year then ended; and
 - comply with generally accepted accounting practice in New Zealand in accordance with the Public Benefit Entity Simple Format Reporting – Accrual (Public Sector) Standard; and
- the performance information of the Trust on page 21 presents fairly, in all material respects, the Trust's actual performance compared against the performance targets and other measures by which performance was judged in relation to the Trust's objectives for the year ended 30 June 2020.

Our audit was completed on 22 October 2020. This is the date at which our opinion is expressed.

The basis for our opinion is explained below. In addition, we outline the responsibilities of the Trust Board and our responsibilities relating to the financial statements and the performance information, we comment on other information, and we explain our independence.

Basis for our opinion

We carried out our audit in accordance with the Auditor-General's Auditing Standards, which incorporate the Professional and Ethical Standards and the International Standards on Auditing (New Zealand) issued by the New Zealand Auditing and Assurance Standards Board. Our responsibilities under those standards are further described in the Responsibilities of the auditor section of our report.

We have fulfilled our responsibilities in accordance with the Auditor-General's Auditing Standards.

We believe that the audit evidence we have obtained is sufficient and appropriate to provide a basis for our opinion.

Responsibilities of the Trust Board for the financial statements and the performance information

The Trust Board is responsible on behalf of the Trust for preparing financial statements that are fairly presented and that comply with generally accepted accounting practice in New Zealand. The Trust Board is also responsible for preparing the performance information for the Trust.

The Trust Board is responsible for such internal control as it determines is necessary to enable it to prepare financial statements and performance information that are free from material misstatement, whether due to fraud or error.

In preparing the financial statements and the performance information, the Trust Board is responsible on behalf of the Trust for assessing the Trust's ability to continue as a going concern. The Trust Board is also responsible for disclosing, as applicable, matters related to going concern and using the going concern basis of accounting, unless the Trust Board intends to liquidate the Trust or to cease operations, or has no realistic alternative but to do so.

The Trust Board's responsibilities arise from the Local Government Act 2002.

Responsibilities of the auditor for the audit of the financial statements and the performance information

Our objectives are to obtain reasonable assurance about whether the financial statements and the performance information, as a whole are free from material misstatement, whether due to fraud or error, and to issue an auditor's report that includes our opinion.

Reasonable assurance is a high level of assurance, but is not a guarantee that an audit carried out in accordance with the Auditor-General's Auditing Standards will always detect a material misstatement when it exists. Misstatements are differences or omissions of amounts or disclosures, and can arise from fraud or error. Misstatements are considered material if, individually or in the

aggregate, they could reasonably be expected to influence the decisions of readers, taken on the basis of these financial statements and the performance information.

For the budget information reported in the financial statements and the performance information, our procedures were limited to checking that the information agreed to the Trust's statement of intent.

We did not evaluate the security and controls over the electronic publication of the financial statements and the performance information.

As part of an audit in accordance with the Auditor-General's Auditing Standards, we exercise professional judgement and maintain professional scepticism throughout the audit. Also:

- We identify and assess the risks of material misstatement of the financial statements and the performance information, whether due to fraud or error, design and perform audit procedures responsive to those risks, and obtain audit evidence that is sufficient and appropriate to provide a basis for our opinion. The risk of not detecting a material misstatement resulting from fraud is higher than for one resulting from error, as fraud may involve collusion, forgery, intentional omissions, misrepresentations, or the override of internal control.
- We obtain an understanding of internal control relevant to the audit in order to design audit procedures that are appropriate in the circumstances, but not for the purpose of expressing an opinion on the effectiveness of the Trust's internal control.
- We evaluate the appropriateness of accounting policies used and the reasonableness of accounting estimates and related disclosures made by the Trust Board.
- We evaluate the appropriateness of the reported performance information within the Trust's framework for reporting its performance.
- We conclude on the appropriateness of the use of the going concern basis of accounting by the Trust Board and, based on the audit evidence obtained, whether a material uncertainty exists related to events or conditions that may cast significant doubt on the Trust's ability to continue as a going concern. If we conclude that a material uncertainty exists, we are required to draw attention in our auditor's report to the related disclosures in the financial statements and the performance information or, if such disclosures are inadequate, to modify our opinion. Our conclusions are based on the audit evidence obtained up to the date of our auditor's report. However, future events or conditions may cause the Trust to cease to continue as a going concern.
- We evaluate the overall presentation, structure and content of the financial statements and the performance information, including the disclosures, and whether the financial statements and the performance information represent the underlying transactions and events in a manner that achieves fair presentation.

We communicate with the Trust Board regarding, among other matters, the planned scope and timing of the audit and significant audit findings, including any significant deficiencies in internal control that we identify during our audit.

Our responsibilities arise from the Public Audit Act 2001.

Other Information

The Trust Board is responsible for the other information. The other information comprises the information included on pages 3 to 22, but does not include the financial statements and the performance information, and our auditor's report thereon.

Our opinion on the financial statements and the performance information does not cover the other information and we do not express any form of audit opinion or assurance conclusion thereon.

In connection with our audit of the financial statements and the performance information, our responsibility is to read the other information. In doing so, we consider whether the other information is materially inconsistent with the financial statements and the performance information or our knowledge obtained in the audit, or otherwise appears to be materially misstated. If, based on our work, we conclude that there is a material misstatement of this other information, we are required to report that fact. We have nothing to report in this regard.

Independence

We are independent of the Trust in accordance with the independence requirements of the Auditor-General's Auditing Standards, which incorporate the independence requirements of Professional and Ethical Standard 1: International Code of Ethics for Assurance Practitioners issued by the New Zealand Auditing and Assurance Standards Board.

Other than the audit, we have no relationship with, or interests in, the Trust.



Karen Young
Audit New Zealand
On behalf of the Auditor-General
Wellington, New Zealand

Appendix I

List of Acquisitions

Items acquired 2019/20

| System ID | Accession No | Name/Title | Primary Maker (name only) | Primary Prod Date | Credit Line |
|-----------|--------------|--|---------------------------|-------------------|--------------------|
| 96498 | 2019/20 | Photograph album, Hawke's Bay earthquake | | 1931 | gifted by Ken Ward |
| 96502 | 2019/20/1 | Earthquake damage, Wesley Methodist Church, Hastings | | 1931 | gifted by Ken Ward |
| 96508 | 2019/20/2 | Earthquake damage, Grand Hotel from railway crossing | | 1931 | gifted by Ken Ward |
| 96509 | 2019/20/3 | Earthquake damage, Grand Hotel | | 1931 | gifted by Ken Ward |
| 96506 | 2019/20/4 | Earthquake damage, Villa d'Este | | 1931 | gifted by Ken Ward |
| 96510 | 2019/20/5 | Earthquake damage, Heretaunga Street, Hastings | | 1931 | gifted by Ken Ward |
| 96507 | 2019/20/6 | Earthquake damage, Heretaunga Street, Hastings | | 1931 | gifted by Ken Ward |
| 96511 | 2019/20/7 | Earthquake damage, Armstrong's | | 03 Feb 1931 | gifted by Ken Ward |
| 96512 | 2019/20/8 | Earthquake damage, Rush Munro looking to Stortford Lodge | | 1931 | gifted by Ken Ward |
| 96513 | 2019/20/9 | Earthquake damage, Bank of New Zealand, Hastings | | 1931 | gifted by Ken Ward |
| 96514 | 2019/20/10 | Earthquake damage, Market Street, Hastings | | 1931 | gifted by Ken Ward |
| 96515 | 2019/20/11 | Earthquake damage, King Street, Hastings | | 1931 | gifted by Ken Ward |
| 96516 | 2019/20/12 | Earthquake damage, Hastings Post Office | | 1931 | gifted by Ken Ward |
| 96517 | 2019/20/13 | Earthquake damage, Heretaunga Street, Hastings | | 1931 | gifted by Ken Ward |
| 96518 | 2019/20/14 | Earthquake damage, Dr Moore's | | 1931 | gifted by Ken Ward |
| 96520 | 2019/20/15 | Earthquake damage, Hannah's corner, Napier | | 1931 | gifted by Ken Ward |
| 96521 | 2019/20/16 | Earthquake damage, Masonic Hotel | | 1931 | gifted by Ken Ward |
| 96522 | 2019/20/17 | Earthquake damage, Napier | | 1931 | gifted by Ken Ward |
| 96519 | 2019/20/18 | Earthquake damage, Masonic Hotel, Napier | | 1931 | gifted by Ken Ward |
| 96523 | 2019/20/19 | Earthquake damage, Blythe's | | 1931 | gifted by Ken Ward |
| 96524 | 2019/20/20 | Earthquake damage, St John's Cathedral, Napier | | 1931 | gifted by Ken Ward |
| 96525 | 2019/20/21 | Earthquake damage, Napier | | 1931 | gifted by Ken Ward |

| System ID | Accession No | Name/Title | Primary Maker (name only) | Primary Prod Date | Credit Line |
|-----------|--------------|---|--|-------------------------|--|
| 96527 | 2019/20/22 | Earthquake damage, Bluff Hill | | 1931 | gifted by Ken Ward |
| 96529 | 2019/20/23 | Earthquake damage, Napier | | 1931 | gifted by Ken Ward |
| 96536 | 2019/20/24 | Earthquake damage, Isolation Block, Napier Hospital | | 1931 | gifted by Ken Ward |
| 96589 | 2019/21 | Ledger, Repairs and maintenance to train rolling stock, Napier | | 19 Mar 1904-03 Sep 1904 | gifted by Warren Bayliss |
| 96550 | 2019/22/1 | Album, Powdrell family | Margaret Henderson | | gifted by Margaret Henderson |
| 96551 | 2019/22/2 | Album, Ernest Frank Powdrell | Margaret Henderson | | gifted by Margaret Henderson |
| 96661 | 2019/23/1 | Ruskin Treasures: Architecture | George Allen and Unwin Ltd | 1906 | gifted by Ruth Munro on behalf of Margaret Hay |
| 96662 | 2019/23/2 | Tom Winter's Life-Work | A Werner | | gifted by Ruth Munro on behalf of Margaret Hay |
| 96663 | 2019/23/3 | Drinks À La Mode | Mrs de Salis | 1891 | gifted by Ruth Munro on behalf of Margaret Hay |
| 96664 | 2019/23/4 | Now Thus - Now Thus: 1826 - 1926 | Sir Joseph Causton & Sons, Limited | 1926 | gifted by Ruth Munro on behalf of Margaret Hay |
| 96665 | 2019/23/5 | A New Method of Calculating the Cubic Contents of Evacuations and Embankments | John C Trautwine; Claxton, Remsen & Haffelfinger | 1875 | gifted by Ruth Munro on behalf of Margaret Hay |
| 96666 | 2019/23/6 | British Competitions Vol IV, 1912-14 | | | gifted by Ruth Munro on behalf of Margaret Hay |
| 96667 | 2019/23/7 | Municipal Theatre, Napier | | | gifted by Ruth Munro on behalf of Margaret Hay |
| 96668 | 2019/23/8 | Surveyor's field notebook | James Hay | | gifted by Ruth Munro on behalf of Margaret Hay |
| 96669 | 2019/23/9 | Aerial view of Napier breakwater | Whites Aviation Ltd | | gifted by Ruth Munro on behalf of Margaret Hay |
| 96671 | 2019/23/10 | Office stationery, J A Louis Hay | | | gifted by Ruth Munro on behalf of Margaret Hay |
| 96672 | 2019/23/11 | List, Building materials | C H Cranby & Co Ltd | Jun 1932 | gifted by Ruth Munro on behalf of Margaret Hay |
| 96670 | 2019/23/12 | Letter and minutes, New Zealand Institute of Architects | New Zealand Institute of Architects | Jun 1932 | gifted by Ruth Munro on behalf of Margaret Hay |
| 96673 | 2019/23/13 | Architectural drawing (fragment), leadlight window | James Augustus Louis Hay | | gifted by Ruth Munro on behalf of Margaret Hay |
| 96674 | 2019/23/14 | Architectural plan, Top office, Herschell St, Napier | | | gifted by Ruth Munro on behalf of Margaret Hay |
| 96676 | 2019/23/15 | Telegrams, James Hay | | May 1904 | gifted by Ruth Munro on behalf of Margaret Hay |
| 96675 | 2019/23/16 | Memorandum and License, James Hay | Department of Lands & Survey | 1901 | gifted by Ruth Munro on behalf of Margaret Hay |
| 96677 | 2019/23/17 | Surveyor's License, James Hay | | 1901 | gifted by Ruth Munro on behalf of Margaret Hay |
| 96678 | 2019/23/18 | Letters, James Hay | | May 1875-Jun 1875 | gifted by Ruth Munro on behalf of Margaret Hay |
| 96679 | 2019/23/19 | Letter, James Hay to Louis Hay | James Hay | 15 Aug 1901 | gifted by Ruth Munro on behalf of Margaret Hay |
| 96681 | 2019/23/20 | Letter, James Hay to Louis Hay | James Hay | 27 Sep 1901 | gifted by Ruth Munro on behalf of Margaret Hay |
| 96680 | 2019/23/21 | Letter, Frances Hay to Louis Hay | Frances Hay | | gifted by Ruth Munro on behalf of Margaret Hay |

| System ID | Accession No | Name/Title | Primary Maker (name only) | Primary Prod Date | Credit Line |
|-----------|--------------|--|---|--------------------------|--|
| 96682 | 2019/23/22 | Letter, Frances Hay to Louis Hay | Frances Hay | 09 Aug 1901 | gifted by Ruth Munro on behalf of Margaret Hay |
| 96683 | 2019/23/23 | Letter, Ethel Hay to Louis Hay | Ethel Hay | | gifted by Ruth Munro on behalf of Margaret Hay |
| 96684 | 2019/23/24 | Indenture contract, C T Natusch and Louis Hay | Charles Natusch | 12 Oct 1895; 16 Oct 1899 | gifted by Ruth Munro on behalf of Margaret Hay |
| 96685 | 2019/23/25 | Louis Hay and his boat | | | gifted by Ruth Munro on behalf of Margaret Hay |
| 96686 | 2019/23/26 | Testimonial, Louis Hay | Charles Natusch | 29 Oct 1898 | gifted by Ruth Munro on behalf of Margaret Hay |
| 96687 | 2019/23/27 | Testimonial, Louis Hay | Walter Finch | 25 Oct 1899 | gifted by Ruth Munro on behalf of Margaret Hay |
| 96688 | 2019/23/28 | Letter, Louis Hay | Dunedin Orchestral Society | 22 Sep 1904 | gifted by Ruth Munro on behalf of Margaret Hay |
| 96690 | 2019/23/30 | Letter, Bill Kempston to Louis Hay | Bill Kempston | 24 Sep 1904 | gifted by Ruth Munro on behalf of Margaret Hay |
| 96691 | 2019/23/31 | Account document, Louis Hay | | 1934-1935 | gifted by Ruth Munro on behalf of Margaret Hay |
| 96692 | 2019/23/32 | Plan, Scheme for development of sand flats north west of Napier | James Augustus Louis Hay | Post 1931 | gifted by Ruth Munro on behalf of Margaret Hay |
| 96693 | 2019/23/33 | Plans, Proposed National Mutual Life office building, Tennyson Street | James Augustus Louis Hay; Thelma Williamson | | gifted by Ruth Munro on behalf of Margaret Hay |
| 96694 | 2019/23/34 | Sketch plans, unidentified buildings | James Augustus Louis Hay | | gifted by Ruth Munro on behalf of Margaret Hay |
| 96695 | 2019/23/35 | Architectural drawing, unidentified building, Dickens Street | James Augustus Louis Hay | | gifted by Ruth Munro on behalf of Margaret Hay |
| 96696 | 2019/23/36 | Jottings, Municipal Theatre | James Augustus Louis Hay | | gifted by Ruth Munro on behalf of Margaret Hay |
| 96697 | 2019/23/37 | Jottings, Gordon house, Napier | James Augustus Louis Hay | | gifted by Ruth Munro on behalf of Margaret Hay |
| 96698 | 2019/23/38 | Jottings, unidentified building | James Augustus Louis Hay | | gifted by Ruth Munro on behalf of Margaret Hay |
| 96702 | 2019/23/39 | Notes, suggestions for own residence | James Augustus Louis Hay | | gifted by Ruth Munro on behalf of Margaret Hay |
| 96701 | 2019/23/40 | Plan (partial), O E Hazzbean | Arthur Milne | | gifted by Ruth Munro on behalf of Margaret Hay |
| 96703 | 2019/23/41 | Plan template, Proposed residence at Putorino for C W Reeves Esq | James Augustus Louis Hay | | gifted by Ruth Munro on behalf of Margaret Hay |
| 96704 | 2019/23/42 | Plan, unidentified residence | | | gifted by Ruth Munro on behalf of Margaret Hay |
| 96706 | 2019/23/43/1 | Photograph Album, homes and commercial buildings designed by J A Louis Hay | | | gifted by Ruth Munro on behalf of Margaret Hay |
| 96857 | 2019/23/43/2 | Omarunui | | | gifted by Ruth Munro on behalf of Margaret Hay |
| 96858 | 2019/23/43/3 | Omarunui | | | gifted by Ruth Munro on behalf of Margaret Hay |
| 96859 | 2019/23/43/4 | Unidentified house | | | gifted by Ruth Munro on behalf of Margaret Hay |

| System ID | Accession No | Name/Title | Primary Maker (name only) | Primary Prod Date | Credit Line |
|-----------|---------------|--|---------------------------|-------------------|--|
| 96860 | 2019/23/43/5 | Unidentified house | | | gifted by Ruth Munro on behalf of Margaret Hay |
| 96861 | 2019/23/43/6 | Unidentified house interior | | | gifted by Ruth Munro on behalf of Margaret Hay |
| 96862 | 2019/23/43/7 | Unidentified house interior | | | gifted by Ruth Munro on behalf of Margaret Hay |
| 96863 | 2019/23/43/8 | Unidentified house interior | | | gifted by Ruth Munro on behalf of Margaret Hay |
| 96864 | 2019/23/43/9 | Unidentified house interior | | | gifted by Ruth Munro on behalf of Margaret Hay |
| 96865 | 2019/23/43/10 | Dining room, Glenalvon, Tikokino | | | gifted by Ruth Munro on behalf of Margaret Hay |
| 96866 | 2019/23/43/11 | Dining room fireplace, Hinerangi homestead | | | gifted by Ruth Munro on behalf of Margaret Hay |
| 96867 | 2019/23/43/12 | Dining room fireplace, Hinerangi homestead | | | gifted by Ruth Munro on behalf of Margaret Hay |
| 96868 | 2019/23/43/13 | Mount Herbert | | | gifted by Ruth Munro on behalf of Margaret Hay |
| 96869 | 2019/23/43/14 | Mount Herbert | | | gifted by Ruth Munro on behalf of Margaret Hay |
| 96870 | 2019/23/43/15 | Mount Herbert | | | gifted by Ruth Munro on behalf of Margaret Hay |
| 96856 | 2019/23/43/16 | Mount Herbert | | | gifted by Ruth Munro on behalf of Margaret Hay |
| 96871 | 2019/23/43/17 | Unidentified house interior | | | gifted by Ruth Munro on behalf of Margaret Hay |
| 96873 | 2019/23/43/18 | Unidentified house interior | | | gifted by Ruth Munro on behalf of Margaret Hay |
| 96872 | 2019/23/43/19 | Unidentified house interior | | | gifted by Ruth Munro on behalf of Margaret Hay |
| 96874 | 2019/23/43/20 | Front gate | | | gifted by Ruth Munro on behalf of Margaret Hay |
| 96875 | 2019/23/43/21 | Napier Soldiers' Club | | | gifted by Ruth Munro on behalf of Margaret Hay |
| 96876 | 2019/23/43/22 | Glenalvon | | | gifted by Ruth Munro on behalf of Margaret Hay |
| 96877 | 2019/23/43/23 | Glenalvon | | | gifted by Ruth Munro on behalf of Margaret Hay |
| 96878 | 2019/23/43/24 | Glenalvon | | | gifted by Ruth Munro on behalf of Margaret Hay |
| 96880 | 2019/23/43/25 | Glenalvon | | | gifted by Ruth Munro on behalf of Margaret Hay |
| 96881 | 2019/23/43/26 | Hall at Glenalvon | | | gifted by Ruth Munro on behalf of Margaret Hay |
| 96879 | 2019/23/43/27 | Glenalvon interior | | | gifted by Ruth Munro on behalf of Margaret Hay |
| 96883 | 2019/23/43/28 | Hall at Glenalvon | | | gifted by Ruth Munro on behalf of Margaret Hay |
| 96882 | 2019/23/43/29 | Living room at Glenalvon | | | gifted by Ruth Munro on behalf of Margaret Hay |
| 96884 | 2019/23/43/30 | Hannah House | | | gifted by Ruth Munro on behalf of Margaret Hay |
| 96886 | 2019/23/43/31 | House designed by Louis Hay | | | gifted by Ruth Munro on behalf of Margaret Hay |

| System ID | Accession No | Name/Title | Primary Maker (name only) | Primary Prod Date | Credit Line |
|-----------|---------------|--|---------------------------|-------------------|--|
| 96885 | 2019/23/43/32 | Unidentified house | | | gifted by Ruth Munro on behalf of Margaret Hay |
| 96887 | 2019/23/43/33 | Dolbel House | | | gifted by Ruth Munro on behalf of Margaret Hay |
| 96888 | 2019/23/43/34 | House designed by Louis Hay | | | gifted by Ruth Munro on behalf of Margaret Hay |
| 96889 | 2019/23/43/35 | Child on steps of Hannah House | | | gifted by Ruth Munro on behalf of Margaret Hay |
| 96890 | 2019/23/43/36 | Dining room, Hinerangi homestead | | | gifted by Ruth Munro on behalf of Margaret Hay |
| 96891 | 2019/23/43/37 | Living room, Hinerangi | | | gifted by Ruth Munro on behalf of Margaret Hay |
| 96892 | 2019/23/43/38 | Unidentified house interior | | | gifted by Ruth Munro on behalf of Margaret Hay |
| 96893 | 2019/23/43/39 | Dolbel House | | | gifted by Ruth Munro on behalf of Margaret Hay |
| 96894 | 2019/23/43/40 | Interior, Dolbel House | | | gifted by Ruth Munro on behalf of Margaret Hay |
| 96895 | 2019/23/43/41 | Interior, Dolbel House | | | gifted by Ruth Munro on behalf of Margaret Hay |
| 96897 | 2019/23/43/42 | Interior, Dolbel House | | | gifted by Ruth Munro on behalf of Margaret Hay |
| 96898 | 2019/23/43/43 | Interior, Dolbel House | | | gifted by Ruth Munro on behalf of Margaret Hay |
| 96899 | 2019/23/43/44 | Unidentified house interior | | | gifted by Ruth Munro on behalf of Margaret Hay |
| 96896 | 2019/23/43/45 | Unidentified house interior | | | gifted by Ruth Munro on behalf of Margaret Hay |
| 96902 | 2019/23/43/46 | Verandah | | | gifted by Ruth Munro on behalf of Margaret Hay |
| 96904 | 2019/23/43/47 | Dais, Nelson Park | | | gifted by Ruth Munro on behalf of Margaret Hay |
| 96906 | 2019/23/43/48 | Unidentified house interior | | | gifted by Ruth Munro on behalf of Margaret Hay |
| 96907 | 2019/23/43/49 | Brick fireplace | | | gifted by Ruth Munro on behalf of Margaret Hay |
| 96908 | 2019/23/43/50 | Cotterill and Humphries building, Hastings | | | gifted by Ruth Munro on behalf of Margaret Hay |
| 96909 | 2019/23/43/51 | Henry Williams building, Hastings | | | gifted by Ruth Munro on behalf of Margaret Hay |
| 96910 | 2019/23/43/52 | Mrs Hannah's residence, Napier | | | gifted by Ruth Munro on behalf of Margaret Hay |
| 96911 | 2019/23/43/53 | Hotel at Puketitiri | | | gifted by Ruth Munro on behalf of Margaret Hay |
| 96912 | 2019/23/43/54 | Omarunui | | | gifted by Ruth Munro on behalf of Margaret Hay |
| 96914 | 2019/23/43/55 | Omarunui | | | gifted by Ruth Munro on behalf of Margaret Hay |
| 96913 | 2019/23/43/56 | Omarunui | | | gifted by Ruth Munro on behalf of Margaret Hay |
| 96915 | 2019/23/43/57 | Omarunui | | | gifted by Ruth Munro on behalf of Margaret Hay |
| 96916 | 2019/23/43/58 | Omarunui | | | gifted by Ruth Munro on behalf of Margaret Hay |

| System ID | Accession No | Name/Title | Primary Maker (name only) | Primary Prod Date | Credit Line |
|-----------|---------------|---|---------------------------|-------------------|--|
| 96917 | 2019/23/43/59 | Cotterill and Humphries building, Hastings | | | gifted by Ruth Munro on behalf of Margaret Hay |
| 96918 | 2019/23/43/60 | Glenalvon | | | gifted by Ruth Munro on behalf of Margaret Hay |
| 96920 | 2019/23/43/61 | Glenalvon | | | gifted by Ruth Munro on behalf of Margaret Hay |
| 96921 | 2019/23/43/62 | Glenalvon | | | gifted by Ruth Munro on behalf of Margaret Hay |
| 96922 | 2019/23/43/63 | Unidentified house | | | gifted by Ruth Munro on behalf of Margaret Hay |
| 96919 | 2019/23/43/64 | Unidentified house interior | | | gifted by Ruth Munro on behalf of Margaret Hay |
| 96705 | 2019/23/44 | Napier Soldiers' Club | | | gifted by Ruth Munro on behalf of Margaret Hay |
| 96708 | 2019/23/45 | Orchestra | | | gifted by Ruth Munro on behalf of Margaret Hay |
| 96712 | 2019/23/46 | Winners of Maiden and Junior Double Sculls | | | gifted by Ruth Munro on behalf of Margaret Hay |
| 96713 | 2019/23/47 | Unidentified house, Wairoa | Charles Burridge | | gifted by Ruth Munro on behalf of Margaret Hay |
| 96711 | 2019/23/48 | St Paul's church under construction | Wallace Poll | | gifted by Ruth Munro on behalf of Margaret Hay |
| 96714 | 2019/23/49 | Bungalow designed by Louis Hay | | | gifted by Ruth Munro on behalf of Margaret Hay |
| 96717 | 2019/23/50 | National Tobacco Building | Arthur Bendigo Hurst | | gifted by Ruth Munro on behalf of Margaret Hay |
| 96718 | 2019/23/51 | National Tobacco Building | Arthur Bendigo Hurst | | gifted by Ruth Munro on behalf of Margaret Hay |
| 96719 | 2019/23/52 | Orchestra members | | | gifted by Ruth Munro on behalf of Margaret Hay |
| 96716 | 2019/23/53 | Louis Hay | | | gifted by Ruth Munro on behalf of Margaret Hay |
| 96720 | 2019/23/54 | Louis Hay and other Highland Society band members | | | gifted by Ruth Munro on behalf of Margaret Hay |
| 96721 | 2019/23/55 | Te Mahanga | H N Whitehead | | gifted by Ruth Munro on behalf of Margaret Hay |
| 96709 | 2019/23/56 | Te Mahanga | H N Whitehead | | gifted by Ruth Munro on behalf of Margaret Hay |
| 96715 | 2019/23/57 | AMP building sculpture | | | gifted by Ruth Munro on behalf of Margaret Hay |
| 96722 | 2019/23/58 | St Paul's Church under construction | | | gifted by Ruth Munro on behalf of Margaret Hay |
| 96723 | 2019/23/59 | St Paul's Church under construction | | | gifted by Ruth Munro on behalf of Margaret Hay |
| 96724 | 2019/23/60 | Hotel | | | gifted by Ruth Munro on behalf of Margaret Hay |
| 96725 | 2019/23/61 | Arthur Milne, Leonard Wolfe, Charles Corne | | | gifted by Ruth Munro on behalf of Margaret Hay |
| 96726 | 2019/23/62 | J A Louis Hay office building | | | gifted by Ruth Munro on behalf of Margaret Hay |
| 96727 | 2019/23/63 | Waiohika, Gisborne | | | gifted by Ruth Munro on behalf of Margaret Hay |
| 96728 | 2019/23/64 | J A Louis Hay | Nicholas & Dougall | | gifted by Ruth Munro on behalf of Margaret Hay |

| System ID | Accession No | Name/Title | Primary Maker (name only) | Primary Prod Date | Credit Line |
|-----------|--------------|---|-------------------------------------|-------------------|--|
| 96730 | 2019/23/65 | Copper engraving plate, J A Louis Hay | | | gifted by Ruth Munro on behalf of Margaret Hay |
| 96707 | 2019/23/66 | Embossing press, J A Louis Hay | | | gifted by Ruth Munro on behalf of Margaret Hay |
| 96731 | 2019/23/67 | Rubber stamp, James Hay | | | gifted by Ruth Munro on behalf of Margaret Hay |
| 96710 | 2019/23/68 | Tumbler case and glasses | | | gifted by Ruth Munro on behalf of Margaret Hay |
| 96732 | 2019/23/69 | Architectural drawing, Munster Chambers | James Augustus Louis Hay | | gifted by Ruth Munro on behalf of Margaret Hay |
| 96733 | 2019/23/70 | Certificate, James Augustus Louis Hay, Fellow of the New Zealand Institute of Architects | New Zealand Institute of Architects | 1918 | gifted by Ruth Munro on behalf of Margaret Hay |
| 96734 | 2019/23/71 | Certificate, James Augustus Louis Hay, Associate of the New Zealand Institute of Architects | New Zealand Institute of Architects | 1916 | gifted by Ruth Munro on behalf of Margaret Hay |
| 96735 | 2019/23/72 | Certificate, James Augustus Louis Hay, Associate of the New Zealand Institute of Architects | New Zealand Institute of Architects | 1911 | gifted by Ruth Munro on behalf of Margaret Hay |
| 96736 | 2019/23/73 | Manuscript Music exercise book | | | gifted by Ruth Munro on behalf of Margaret Hay |
| 96737 | 2019/23/74 | Student drawing book | | 1895 | gifted by Ruth Munro on behalf of Margaret Hay |
| 96738 | 2019/23/75 | Drawing book (incomplete) | | | gifted by Ruth Munro on behalf of Margaret Hay |
| 96739 | 2019/23/76 | Certificate, Music examination pass, James A L Hay | | 1905 | gifted by Ruth Munro on behalf of Margaret Hay |
| 96740 | 2019/23/77 | L'Architettura alla Prima Esposizione Internazionale d'Arte Decorativa Moderna | | 1902 | gifted by Ruth Munro on behalf of Margaret Hay |
| 96742 | 2019/23/78 | Letters and newspaper cuttings, Margaret Hay | | 1998-2000 | gifted by Ruth Munro on behalf of Margaret Hay |
| 96741 | 2019/23/79 | Account book, J A Louis Hay | Bank of Australasia | Jun 1921-Oct 1923 | gifted by Ruth Munro on behalf of Margaret Hay |
| 96744 | 2019/23/80 | Account book, J A Louis Hay | Bank of Australasia | Feb 1931-Feb 1933 | gifted by Ruth Munro on behalf of Margaret Hay |
| 96745 | 2019/23/81 | Account book, J A Louis Hay | Bank of Australasia | Feb 1933-Oct 1934 | gifted by Ruth Munro on behalf of Margaret Hay |
| 96746 | 2019/23/82 | Account book, J A Louis Hay | Bank of Australasia | Apr 1934-Sep 1934 | gifted by Ruth Munro on behalf of Margaret Hay |
| 96747 | 2019/23/83 | Account book, J A Louis Hay | Bank of Australasia | Oct 1934-Oct 1936 | gifted by Ruth Munro on behalf of Margaret Hay |
| 96748 | 2019/23/84 | Account book, J A Louis Hay | Bank of Australasia | Oct 1936-Jul 1939 | gifted by Ruth Munro on behalf of Margaret Hay |
| 96749 | 2019/23/85 | Diary, J A Louis Hay | | 1934 | gifted by Ruth Munro on behalf of Margaret Hay |

| System ID | Accession No | Name/Title | Primary Maker (name only) | Primary Prod Date | Credit Line |
|-----------|---------------|---|--|-------------------|--|
| 96750 | 2019/23/86 | Booklet, Acetone Illuminating & Welding Co Silver Jubilee 1909-1934 | The Acetone Illuminating and Welding Company Limited | 1934 | gifted by Ruth Munro on behalf of Margaret Hay |
| 96729 | 2019/23/87 | Untitled scene | Thelma Williamson | | gifted by Ruth Munro on behalf of Margaret Hay |
| 96751 | 2019/23/88 | Architectural drawing, room interior | Thelma Williamson | | gifted by Ruth Munro on behalf of Margaret Hay |
| 96743 | 2019/23/89 | Magazine, The Acetonian | Swales Printing Co. Ltd | Sep 1950 | gifted by Ruth Munro on behalf of Margaret Hay |
| 96752 | 2019/23/90 | Gas Co Office | | | gifted by Ruth Munro on behalf of Margaret Hay |
| 96753 | 2019/23/91 | Catalogue, NZ Industrial Gases Ltd Museum, Gas Equipment Division | | 1986 | gifted by Ruth Munro on behalf of Margaret Hay |
| 96754 | 2019/23/92 | Equipment design sketches | Thelma Williamson | | gifted by Ruth Munro on behalf of Margaret Hay |
| 96760 | 2019/23/93 | Letter to Margaret Hay | Thelma Williamson | 21 Dec 1973 | gifted by Ruth Munro on behalf of Margaret Hay |
| 96798 | 2019/23/93d | Thelma Williamson | | | gifted by Ruth Munro on behalf of Margaret Hay |
| 96761 | 2019/23/94 | NZIG Ltd Museum, Gas Equipment Division | | | gifted by Ruth Munro on behalf of Margaret Hay |
| 96762 | 2019/23/95a-c | Letters | Basil Ward; Margaret Hay | 1950; 1974 | gifted by Ruth Munro on behalf of Margaret Hay |
| 96824 | 2019/23/95d | Parker's Chambers | | Post 03 Feb 1931 | gifted by Ruth Munro on behalf of Margaret Hay |
| 96763 | 2019/23/96 | Building site | | | gifted by Ruth Munro on behalf of Margaret Hay |
| 96764 | 2019/23/97 | Applications for financial assistance | | | gifted by Ruth Munro on behalf of Margaret Hay |
| 96765 | 2019/23/98 | Letters and receipts | | 1935-1940 | gifted by Ruth Munro on behalf of Margaret Hay |
| 96766 | 2019/23/99a-b | Boat in dry dock | | | gifted by Ruth Munro on behalf of Margaret Hay |
| 96827 | 2019/23/99c | Boat in harbour, Ahuriri | | | gifted by Ruth Munro on behalf of Margaret Hay |
| 96830 | 2019/23/99d | Boat in harbour | | | gifted by Ruth Munro on behalf of Margaret Hay |
| 96831 | 2019/23/99e | Boat at anchor | | | gifted by Ruth Munro on behalf of Margaret Hay |
| 96832 | 2019/23/99f | Two men on board a boat | | | gifted by Ruth Munro on behalf of Margaret Hay |
| 96833 | 2019/23/99g | Boat in harbour, Ahuriri | | | gifted by Ruth Munro on behalf of Margaret Hay |
| 96834 | 2019/23/99h | Boats in harbour, Ahuriri | | | gifted by Ruth Munro on behalf of Margaret Hay |
| 96835 | 2019/23/99i | Boats in harbour, Ahuriri | | | gifted by Ruth Munro on behalf of Margaret Hay |
| 96767 | 2019/23/100 | Inner harbour | | | gifted by Ruth Munro on behalf of Margaret Hay |
| 96769 | 2019/23/101 | Louis Hay | Deighton Studios | | gifted by Ruth Munro on behalf of Margaret Hay |
| 96770 | 2019/23/102 | Large group including Louis Hay | | | gifted by Ruth Munro on behalf of Margaret Hay |

| System ID | Accession No | Name/Title | Primary Maker (name only) | Primary Prod Date | Credit Line |
|-----------|--------------|--|---------------------------|-------------------|--|
| 96771 | 2019/23/103 | Louis Hay with boating buddies | | | gifted by Ruth Munro on behalf of Margaret Hay |
| 96772 | 2019/23/104 | Louis Hay | | | gifted by Ruth Munro on behalf of Margaret Hay |
| 96773 | 2019/23/105 | Military band | | | gifted by Ruth Munro on behalf of Margaret Hay |
| 96774 | 2019/23/106 | Louis Hay rowing | Guy Clayton Morris | | gifted by Ruth Munro on behalf of Margaret Hay |
| 96775 | 2019/23/107 | Unidentified house | George Blackley & Co | | gifted by Ruth Munro on behalf of Margaret Hay |
| 96776 | 2019/23/108 | F Battery camp | | | gifted by Ruth Munro on behalf of Margaret Hay |
| 96777 | 2019/23/109 | Hawke's Bay Highland Society | Percy Caz Sorrell | | gifted by Ruth Munro on behalf of Margaret Hay |
| 96778 | 2019/23/110 | Hawke's Bay Highland Society | | | gifted by Ruth Munro on behalf of Margaret Hay |
| 96779 | 2019/23/111 | Highland Society band, Dunedin | Guy Clayton Morris | | gifted by Ruth Munro on behalf of Margaret Hay |
| 96780 | 2019/23/112 | Inner Harbour | | | gifted by Ruth Munro on behalf of Margaret Hay |
| 96781 | 2019/23/113 | Framed drawing, West Shore, 1934 | Leslie Gordon | | gifted by Ruth Munro on behalf of Margaret Hay |
| 96782 | 2019/23/114 | Illuminated address, W H Nelson Esq | Thelma Williamson | | gifted by Ruth Munro on behalf of Margaret Hay |
| 96783 | 2019/23/115 | Notebook, Louis Hay | James Augustus Louis Hay | | gifted by Ruth Munro on behalf of Margaret Hay |
| 96784 | 2019/23/116 | Programme, Napier Sailing Club Annual Ball | Telegraph Print | 1905 | gifted by Ruth Munro on behalf of Margaret Hay |
| 96785 | 2019/23/117 | Grave of James Hay | | | gifted by Ruth Munro on behalf of Margaret Hay |
| 96786 | 2019/23/118 | James Hay at survey camp | | | gifted by Ruth Munro on behalf of Margaret Hay |
| 96787 | 2019/23/119 | James Hay surveying | | | gifted by Ruth Munro on behalf of Margaret Hay |
| 96788 | 2019/23/120 | Photograph album, Hay family | | | gifted by Ruth Munro on behalf of Margaret Hay |
| 96789 | 2019/23/121 | Greeting card, Clementine Churchill to the Hawke's Bay Branch of the Navy League | | 20 May 1941 | gifted by Ruth Munro on behalf of Margaret Hay |
| 96790 | 2019/23/122 | Advertising float | | | gifted by Ruth Munro on behalf of Margaret Hay |
| 96791 | 2019/23/123 | Women on float | | | gifted by Ruth Munro on behalf of Margaret Hay |
| 96792 | 2019/23/124 | New Napier Carnival parade float | | 1933 | gifted by Ruth Munro on behalf of Margaret Hay |
| 96793 | 2019/23/125 | Group of nurses at Napier Park Racecourse | | | gifted by Ruth Munro on behalf of Margaret Hay |
| 96794 | 2019/23/126 | Group of nurses at Napier Park Racecourse | | | gifted by Ruth Munro on behalf of Margaret Hay |
| 96795 | 2019/23/127 | Nurses at Napier Park Racecourse | | | gifted by Ruth Munro on behalf of Margaret Hay |
| 96768 | 2019/23/128 | Nurses at Napier Park Racecourse | | | gifted by Ruth Munro on behalf of Margaret Hay |

| System ID | Accession No | Name/Title | Primary Maker (name only) | Primary Prod Date | Credit Line |
|-----------|--------------|---|---------------------------|-------------------|--|
| 96796 | 2019/23/129 | Nurses at Napier Park Racecourse | | | gifted by Ruth Munro on behalf of Margaret Hay |
| 96797 | 2019/23/130 | Nurses at Napier Park Racecourse | | | gifted by Ruth Munro on behalf of Margaret Hay |
| 96799 | 2019/23/131 | Two nurses at Napier Park Racecourse | | | gifted by Ruth Munro on behalf of Margaret Hay |
| 96800 | 2019/23/132 | Nurse at Napier Park Racecourse | | | gifted by Ruth Munro on behalf of Margaret Hay |
| 96801 | 2019/23/133 | Hospital tents at Napier Park Racecourse | | | gifted by Ruth Munro on behalf of Margaret Hay |
| 96802 | 2019/23/134 | Hospital tents at Napier Park Racecourse | | | gifted by Ruth Munro on behalf of Margaret Hay |
| 96803 | 2019/23/135 | Hospital tents at Napier Park Racecourse | | | gifted by Ruth Munro on behalf of Margaret Hay |
| 96804 | 2019/23/136 | Hospital tents at Napier Park Racecourse | | | gifted by Ruth Munro on behalf of Margaret Hay |
| 96805 | 2019/23/137 | Napier CBD after earthquake | | | gifted by Ruth Munro on behalf of Margaret Hay |
| 96806 | 2019/23/138 | Earthquake damage, St Paul's church | | | gifted by Ruth Munro on behalf of Margaret Hay |
| 96807 | 2019/23/139 | Earthquake damaged house | | | gifted by Ruth Munro on behalf of Margaret Hay |
| 96808 | 2019/23/140 | Float advertising gas cooking and heating | | | gifted by Ruth Munro on behalf of Margaret Hay |
| 96809 | 2019/23/141 | Louis Hay camping | | | gifted by Ruth Munro on behalf of Margaret Hay |
| 96810 | 2019/23/142 | Group of people outdoors | | | gifted by Ruth Munro on behalf of Margaret Hay |
| 96811 | 2019/23/143 | Postcard to Louis Hay, Xmas 1905 | | | gifted by Ruth Munro on behalf of Margaret Hay |
| 96812 | 2019/23/144 | Postcard to Louis Hay, Xmas 1905 | Muir And Moodie | | gifted by Ruth Munro on behalf of Margaret Hay |
| 96813 | 2019/23/145 | Postcard to Louis Hay, 1905 | | | gifted by Ruth Munro on behalf of Margaret Hay |
| 96814 | 2019/23/146 | Postcard to Louis Hay from Billy, 1905 | | | gifted by Ruth Munro on behalf of Margaret Hay |
| 96815 | 2019/23/147 | Louis Hay in military uniform | Reflex Studio | | gifted by Ruth Munro on behalf of Margaret Hay |
| 96816 | 2019/23/148 | Uniformed men at camp | | | gifted by Ruth Munro on behalf of Margaret Hay |
| 96817 | 2019/23/149 | Group of uniformed men including Louis Hay | | | gifted by Ruth Munro on behalf of Margaret Hay |
| 96818 | 2019/23/150 | Rowing team | | | gifted by Ruth Munro on behalf of Margaret Hay |
| 96819 | 2019/23/151 | Ted Nesbitt and two others at campsite | | | gifted by Ruth Munro on behalf of Margaret Hay |
| 96820 | 2019/23/152 | Christmas card, The Acetone Illuminating and Welding Company Limited, Napier Branch | Thelma Williamson | 1948 | gifted by Ruth Munro on behalf of Margaret Hay |
| 96821 | 2019/23/153 | Christmas card, Lands & Survey Department, Napier | Thelma Williamson | 1952 | gifted by Ruth Munro on behalf of Margaret Hay |
| 96822 | 2019/23/154 | Blueprints, welding equipment | Thelma Williamson | | gifted by Ruth Munro on behalf of Margaret Hay |

| System ID | Accession No | Name/Title | Primary Maker (name only) | Primary Prod Date | Credit Line |
|-----------|--------------|---|-------------------------------|-------------------|--|
| 96823 | 2019/23/155 | HMS Ringdove | | | gifted by Ruth Munro on behalf of Margaret Hay |
| 96700 | 2019/23/156 | Tin | | | gifted by Ruth Munro on behalf of Margaret Hay |
| 96111 | 2019/25 | Elizabeth Colenso (Elizabeth Fairburn): A Biography, and other accounts | Frances Swabey; Selwyn Simcox | 1961 | purchase |
| 96640 | 2019/26/1 | 7 Kennedy Road, Napier | Richard Wotton | Sep 2017 | gifted by the MTG Foundation. © Richard Wotton |
| 96642 | 2019/26/2 | 30 Herrick Street, Napier | Richard Wotton | Sep 2017 | gifted by the MTG Foundation. © Richard Wotton |
| 96643 | 2019/26/3 | 42 Higgins Street, Napier | Richard Wotton | Sep 2017 | gifted by the MTG Foundation. © Richard Wotton |
| 96644 | 2019/26/4 | 98 High Street, Waipawa | Richard Wotton | Sep 2017 | gifted by the MTG Foundation. © Richard Wotton |
| 96645 | 2019/26/5 | 200 Sylvan Road, Hastings | Richard Wotton | Sep 2017 | gifted by the MTG Foundation. © Richard Wotton |
| 96646 | 2019/26/6 | 206 Lyndon Street, Hastings | Richard Wotton | Sep 2017 | gifted by the MTG Foundation. © Richard Wotton |
| 96648 | 2019/26/7 | 302 Riverslea Road, Hastings | Richard Wotton | Sep 2017 | gifted by the MTG Foundation. © Richard Wotton |
| 96647 | 2019/26/8 | 512 Pepper Street, Hastings | Richard Wotton | 2017 | gifted by the MTG Foundation. © Richard Wotton |
| 96649 | 2019/26/9 | 606 Alexandra Street, Hastings | Richard Wotton | 2017 | gifted by the MTG Foundation. © Richard Wotton |
| 96650 | 2019/26/10 | 607 Jervois Street, Hastings | Richard Wotton | 2017 | gifted by the MTG Foundation. © Richard Wotton |
| 96651 | 2019/26/11 | 609 Jervois Street, Hastings | Richard Wotton | 2017 | gifted by the MTG Foundation. © Richard Wotton |
| 96652 | 2019/26/12 | 701 Grove Road, Hastings | Richard Wotton | 2017 | gifted by the MTG Foundation. © Richard Wotton |
| 96653 | 2019/26/13 | 703 Grove Road, Hastings | Richard Wotton | Sep 2017 | gifted by the MTG Foundation. © Richard Wotton |
| 96654 | 2019/26/14 | 706 Alexandra Street, Hastings | Richard Wotton | 2017 | gifted by the MTG Foundation. © Richard Wotton |
| 96656 | 2019/26/15 | 809 Pepper Street, Hastings | Richard Wotton | Sep 2017 | gifted by the MTG Foundation. © Richard Wotton |
| 96655 | 2019/26/16 | 1011 Willowpark Road, Hastings | Richard Wotton | 2017 | gifted by the MTG Foundation. © Richard Wotton |

| System ID | Accession No | Name/Title | Primary Maker (name only) | Primary Prod Date | Credit Line |
|-----------|--------------|---|-------------------------------|-------------------|--|
| 96658 | 2019/26/17 | Buckingham Flats, 514 Heretaunga Street East, Hastings | Richard Wotton | Sep 2017 | gifted by the MTG Foundation. © Richard Wotton |
| 96657 | 2019/26/18 | 505 Queen Street, Hastings | Richard Wotton | Sep 2017 | gifted by the MTG Foundation. © Richard Wotton |
| 96659 | 2019/26/19 | Christ Church, Pukehou | Richard Wotton | Sep 2017 | gifted by the MTG Foundation. © Richard Wotton |
| 96564 | 2019/28 | Samuel Crowther portrait | | Circa 1922 | gifted by Graeme Crowther |
| 96560 | 2019/29/1 | Souvenir postcard album, Napier New Zealand: Sunshine and Sea Breezes | | Pre 1931 | gifted by Janet Allan |
| 96552 | 2019/29/2 | T-shirt, Art Deco Napier | Christopher Matthews; Hanes | 1985 | gifted by Janet Allan |
| 96553 | 2019/29/3 | T-shirt, Art Deco Napier | Christopher Matthews; Hanes | 1985 | gifted by Janet Allan |
| 96554 | 2019/29/4 | T-shirt, Deco Daze, Summertime in Napier | Christopher Matthews; Hanes | 1985 | gifted by Janet Allan |
| 96555 | 2019/29/5 | T-shirt, Deco Dare Devil | Christopher Matthews; Hanes | 1985 | gifted by Janet Allan |
| 96556 | 2019/29/6 | T-shirt, Art Deco Napier | Christopher Matthews; Novelli | 1985 | gifted by Janet Allan |
| 96558 | 2019/29/7 | T-shirt, Art Deco Napier | Christopher Matthews; Hanes | 1985 | gifted by Janet Allan |
| 96559 | 2019/29/8 | T-shirt sketches | Christopher Matthews | 1985 | gifted by Janet Allan |
| 96586 | 2019/30 | Rechabite badge | Mayer & Kean | | gifted by Heather Kyle |
| 96641 | 2019/31 | Departure Lounge | Desmond Helmore | 2018 | gifted by the MTG Foundation |
| 96583 | 2019/32/1 | Kete Aronui | David Trubridge | | purchase |
| 96584 | 2019/32/2 | Kete Tuauri | David Trubridge | | purchase |
| 96585 | 2019/32/3 | Kete Tuatea | David Trubridge | | purchase |
| 96611 | 2019/33 | Journal ledger, Tomoana freezing works | | 1907-1921 | gifted by Lady Joy Axford |
| 96621 | 2019/34 | Workbook, Primary education curriculum | Te Awa School | 1960 | gifted by Mary Minto on behalf of Bernadette Hartshorn |
| 96615 | 2019/35/1 | Hampden School | Charles Mariboe | | purchase |
| 96614 | 2019/35/2 | Hampden School | Charles Mariboe | | purchase |
| 96616 | 2019/35/3 | Hampden School | Charles Mariboe | | purchase |
| 96612 | 2019/35/4 | Doar family | Charles Mariboe | | purchase |
| 96617 | 2019/35/5 | Mr and Mrs Grant | Charles Mariboe | | purchase |
| 96825 | 2019/36 | Ko te tahi wahi o te Kawenata Tawhito | Robert Maunsell | 1848 | gifted by Gordon Vogtherr |
| 96828 | 2019/38 | Hawke's Bay Militia waistcoat | | | gifted by Diana Morris |
| 96829 | 2019/39 | Charred wood | | | gifted by ANZ Napier |
| 96836 | 2019/40/1 | Cloth logo, Marineland of New Zealand | | | gifted by Sue Macdonald |
| 96838 | 2019/40/2 | Cloth logo, Marineland of New Zealand | | | gifted by Sue Macdonald |
| 96837 | 2019/41 | Wahakura | Shelly Austin | | gifted by Rose Mohi |
| 96960 | 2019/42/1 | Kete huruhuru | | | gifted by the McRae family |

| System ID | Accession No | Name/Title | Primary Maker (name only) | Primary Prod Date | Credit Line |
|-----------|--------------|---|--|-------------------|---|
| 96961 | 2019/42/2 | Kete muka | | | gifted by the McRae family |
| 96962 | 2019/42/3 | Kete muka | | | gifted by the McRae family |
| 96926 | 2019/43/1 | Thomas Hyde and family | | | gifted by John Burrell |
| 96927 | 2019/43/2 | Thomas Hyde with his wife Emily, Jessie Hyde and Miss Everard | | | gifted by John Burrell |
| 96928 | 2019/43/3 | Morris Spence at wedding breakfast | | | gifted by John Burrell |
| 96966 | 2019/44 | Matauranga (Wisdom) | Kathleen Twigg | 1975 | gifted by Kathleen Twigg |
| 96925 | 2019/45 | Flats, 410 Nelson Street, Hastings | Richard Wotton | 2017 | gifted by Richard Wotton. © Richard Wotton |
| 96976 | 2020/1/1 | Framed list of signatures, Napier Hospital Trained Nurses' Reunion, 1893-1948 | | 1948 | gifted by the Hawke's Bay District Health Board |
| 96982 | 2020/1/2 | Framed list of signatures, Napier Hospital Trained Nurses' reunion, 1893-1969 | | 1969 | gifted by the Hawke's Bay District Health Board |
| 96983 | 2020/1/3 | List of signatures, Napier Hospital Trained Nurses' reunion, 1893-1990 | | 1990 | gifted by the Hawke's Bay District Health Board |
| 96984 | 2020/1/4 | List of signatures, Napier Hospital Trained Nurses' reunion 1893-2000 | | 2000 | gifted by the Hawke's Bay District Health Board |
| 96986 | 2020/1/5 | Napier Hospital medical staff | | | gifted by the Hawke's Bay District Health Board |
| 96987 | 2020/1/6 | Napier Hospital staff | | | gifted by the Hawke's Bay District Health Board |
| 96988 | 2020/1/7 | Napier Hospital nurses | | | gifted by the Hawke's Bay District Health Board |
| 96989 | 2020/1/8 | Napier Hospital nurse administering medicine | | | gifted by the Hawke's Bay District Health Board |
| 96985 | 2020/1/9 | Napier Hospital doctor using stethoscope | | | gifted by the Hawke's Bay District Health Board |
| 96990 | 2020/1/10 | Nurse bathing baby at Napier Hospital | | | gifted by the Hawke's Bay District Health Board |
| 96992 | 2020/1/11 | Nurse with schoolboy at Napier Hospital | | | gifted by the Hawke's Bay District Health Board |
| 96993 | 2020/1/12 | Nursing Aids recruitment posters | | | gifted by the Hawke's Bay District Health Board |
| 96991 | 2020/1/13 | A Surgical Handbook: For the Use of Students, Practitioners, House-Surgeons, and Dressers | Francis Mitchell Caird; Charles Walker Cathcart | 1902 | gifted by the Hawke's Bay District Health Board |
| 96994 | 2020/1/14 | Booklet, Historical Development of Nursing in New Zealand, 1840-1946 | Department of Health | 1947 | gifted by the Hawke's Bay District Health Board |
| 96995 | 2020/1/15 | Booklet, Historical Development of Nursing in New Zealand, 1840-1950 | Department of Health | | gifted by the Hawke's Bay District Health Board |
| 96996 | 2020/1/16 | Booklet, The Origin and Development of the Work of the Society, 1953 | Stone, Son & Co Ltd; Royal New Zealand Plunket Society | 1953 | gifted by the Hawke's Bay District Health Board |
| 96997 | 2020/1/17 | Programme, Hawke's Bay Hospital Board Napier Hospital School of Nursing Graduation Ceremony, 1968 | | 1968 | gifted by the Hawke's Bay District Health Board |

| System ID | Accession No | Name/Title | Primary Maker (name only) | Primary Prod Date | Credit Line |
|-----------|--------------|---|----------------------------|-------------------|---|
| 96998 | 2020/1/18 | Programme, Hawke's Bay Hospital Board Napier Hospital School of Nursing Graduation Ceremony, 1969 | | 1969 | gifted by the Hawke's Bay District Health Board |
| 96999 | 2020/1/19 | Programme, Hawke's Bay Hospital Board Napier Hospital School of Nursing Graduation Ceremony, 15th September, 1970 | | 1970 | gifted by the Hawke's Bay District Health Board |
| 97000 | 2020/1/20 | Programme, Hawke's Bay Hospital Board Napier Hospital School of Nursing Graduation Ceremony, 1971 | | 1971 | gifted by the Hawke's Bay District Health Board |
| 97001 | 2020/1/21 | Programme, Hawke's Bay School of Nursing Graduation Ceremony, March 1973 | | Mar 1973 | gifted by the Hawke's Bay District Health Board |
| 97002 | 2020/1/22 | Programme, Hawke's Bay School of Nursing Graduation Ceremony, September 1973 | | Sep 1973 | gifted by the Hawke's Bay District Health Board |
| 97003 | 2020/1/23 | Programme, Hawke's Bay School of Nursing Graduation Ceremony, September 1974 | | 1974 | gifted by the Hawke's Bay District Health Board |
| 97004 | 2020/1/24 | Programme, Hawke's Bay School of Nursing Graduation Ceremony, September 1976 | | 1976 | gifted by the Hawke's Bay District Health Board |
| 97005 | 2020/1/25 | Programme, Hawke's Bay School of Nursing Graduation Ceremony, March 1977 | | Mar 1977 | gifted by the Hawke's Bay District Health Board |
| 97006 | 2020/1/26 | Programme, Hawke's Bay School of Nursing Graduation Ceremony, September 1977 | | Sep 1977 | gifted by the Hawke's Bay District Health Board |
| 97007 | 2020/1/27 | Programme, Hawke's Bay School of Nursing Graduation Ceremony, September 1978 | | Sep 1978 | gifted by the Hawke's Bay District Health Board |
| 97008 | 2020/1/28 | Programme, Hawke's Bay School of Nursing graduation ceremony, September 1979 | | Sep 1979 | gifted by the Hawke's Bay District Health Board |
| 97009 | 2020/1/29 | Historical timeline of Napier Hospital | | | gifted by the Hawke's Bay District Health Board |
| 97011 | 2020/1/30 | Letter, copy, Mrs Zoe Muir | Zoe Maud Muir | | gifted by the Hawke's Bay District Health Board |
| 97010 | 2020/1/31 | Notes, building and maintenance of Napier nurses' home | | | gifted by the Hawke's Bay District Health Board |
| 97012 | 2020/1/32 | Pamphlet, Hawke's Bay Hospital Board | Hawke's Bay Hospital Board | | gifted by the Hawke's Bay District Health Board |
| 97013 | 2020/1/33 | Napier Hospital staff | | | gifted by the Hawke's Bay District Health Board |
| 97183 | 2020/1/34/1 | Napier Hospital School of Nursing Preliminary Class, 19th January, 1956 | | 19 Jan 1956 | gifted by Hawke's Bay District Health Board |
| 97184 | 2020/1/34/2 | Nurse F E Strachan with mother and friends | | | gifted by Hawke's Bay District Health Board |
| 97185 | 2020/1/34/3 | Napier Hospital School of Nursing Preliminary Class, April 1956 | | Apr 1956 | gifted by Hawke's Bay District Health Board |

| System ID | Accession No | Name/Title | Primary Maker (name only) | Primary Prod Date | Credit Line |
|-----------|--------------|---|---------------------------|-------------------|---|
| 97181 | 2020/1/34/4 | Napier Hospital School of Nursing Preliminary Class, 8 September, 1955 | | 08 Sep 1955 | gifted by Hawke's Bay District Health Board |
| 97186 | 2020/1/34/5 | Napier Hospital School of Nursing Preliminary Class, 13 January, 1955 | | 13 Jan 1955 | gifted by Hawke's Bay District Health Board |
| 97014 | 2020/1/34/6 | Napier Hospital School of Nursing, September 1956 Preliminary Class | | Sep 1956 | gifted by the Hawke's Bay District Health Board |
| 97187 | 2020/1/34/7 | Napier Hospital School of Nursing Preliminary Class, April 1957 | | Apr 1957 | gifted by the Hawke's Bay District Health Board |
| 97188 | 2020/1/34/8 | Napier Hospital School of Nursing Preliminary Class, September 1957 | | Sep 1957 | gifted by the Hawke's Bay District Health Board |
| 97189 | 2020/1/34/9 | Napier Hospital School of Nursing Preliminary Class, January 1957 | | Jan 1957 | gifted by the Hawke's Bay District Health Board |
| 97190 | 2020/1/34/10 | Napier Hospital School of Nursing Preliminary Class, January 1960 | | Jan 1960 | gifted by the Hawke's Bay District Health Board |
| 97191 | 2020/1/34/11 | Napier Hospital School of Nursing Preliminary Class, April 1960 | | Apr 1960 | gifted by the Hawke's Bay District Health Board |
| 97192 | 2020/1/34/12 | Napier Hospital School of Nursing Preliminary Class, April 1959 | | Apr 1959 | gifted by the Hawke's Bay District Health Board |
| 97194 | 2020/1/34/13 | Napier Hospital School of Nursing Preliminary Class, September 1960 | | Sep 1960 | gifted by the Hawke's Bay District Health Board |
| 97196 | 2020/1/34/14 | Napier Hospital School of Nursing Preliminary Class, January 1959 | | Jan 1959 | gifted by the Hawke's Bay District Health Board |
| 97199 | 2020/1/34/15 | Napier Hospital School of Nursing Preliminary Class, September 1959 | | Sep 1959 | gifted by the Hawke's Bay District Health Board |
| 97195 | 2020/1/34/16 | Napier Hospital School of Nursing Preliminary Class, 26 April, 1962 | | 26 Apr 1962 | gifted by Hawke's Bay District Health Board |
| 97197 | 2020/1/34/17 | Napier Hospital School of Nursing Preliminary Class, 18 January, 1962 | | 18 Jan 1962 | gifted by Hawke's Bay District Health Board |
| 97193 | 2020/1/34/18 | Napier Hospital School of Nursing Preliminary Class, 12th January, 1961 | | 12 Jan 1961 | gifted by Hawke's Bay District Health Board |
| 97198 | 2020/1/34/19 | Napier Hospital School of Nursing Preliminary Class, 13th April, 1961 | | 13 Apr 1961 | gifted by Hawke's Bay District Health Board |
| 97200 | 2020/1/34/20 | Napier Hospital School of Nursing Preliminary Class, 7th September 1961 | | 07 Sep 1961 | gifted by Hawke's Bay District Health Board |
| 97201 | 2020/1/34/21 | Napier Hospital School of Nursing Preliminary Class, January 1967 | | Jan 1967 | gifted by the Hawke's Bay District Health Board |
| 97203 | 2020/1/34/22 | Napier Hospital School of Nursing Preliminary Class, January 1967 | | Jan 1967 | gifted by the Hawke's Bay District Health Board |

| System ID | Accession No | Name/Title | Primary Maker (name only) | Primary Prod Date | Credit Line |
|-----------|--------------|---|---------------------------|-------------------|---|
| 97204 | 2020/1/34/23 | Ertell Prize, Student Nurse H M Reaney, March 1967 | | Mar 1967 | gifted by the Hawke's Bay District Health Board |
| 97202 | 2020/1/34/24 | Napier Hospital School of Nursing group, January 1962 | | Jan 1962 | gifted by Hawke's Bay District Health Board |
| 97205 | 2020/1/34/25 | Napier Hospital School of Nursing group, September 1961 | | Sep 1961 | gifted by Hawke's Bay District Health Board |
| 97207 | 2020/1/34/26 | Napier Hospital School of Nursing group | | | gifted by Hawke's Bay District Health Board |
| 97209 | 2020/1/34/27 | Napier Hospital School of Nursing group | | | gifted by Hawke's Bay District Health Board |
| 97206 | 2020/1/34/28 | Napier Hospital School of Nursing Preliminary Class, July 1964 | | Jul 1964 | gifted by the Hawke's Bay District Health Board |
| 97208 | 2020/1/34/29 | Napier Hospital School of Nursing Preliminary Class, January 1965 | | Jan 1965 | gifted by the Hawke's Bay District Health Board |
| 97210 | 2020/1/34/30 | Napier Hospital School of Nursing Preliminary Class, July 1965 | | Jul 1965 | gifted by the Hawke's Bay District Health Board |
| 97211 | 2020/1/34/31 | Napier Hospital School of Nursing Preliminary Class, January 1964 | | Jan 1964 | gifted by the Hawke's Bay District Health Board |
| 97212 | 2020/1/34/32 | Nurse J M Groom | | | gifted by Hawke's Bay District Health Board |
| 97215 | 2020/1/34/33 | Nurse M J Taylor | | May 1959 | gifted by Hawke's Bay District Health Board |
| 97218 | 2020/1/34/34 | Nurse R Sang | | | gifted by Hawke's Bay District Health Board |
| 97222 | 2020/1/34/35 | Napier Hospital School of Nursing Preliminary Class, January 1958 | | Jan 1958 | gifted by Hawke's Bay District Health Board |
| 97225 | 2020/1/34/36 | Napier Hospital School of Nursing Preliminary Class, April 1958 | | Apr 1958 | gifted by Hawke's Bay District Health Board |
| 97228 | 2020/1/34/37 | Napier Hospital School of Nursing Preliminary Class, September 1958 | | Sep 1958 | gifted by Hawke's Bay District Health Board |
| 97213 | 2020/1/34/38 | First Professional Cup, Nurse C Hoyland | | May 1964 | gifted by the Hawke's Bay District Health Board |
| 97214 | 2020/1/34/39 | First Professional Cup, Nurse N Bryant | | Nov 1964 | gifted by the Hawke's Bay District Health Board |
| 97216 | 2020/1/34/40 | First Professional Cup, Nurse E M Halliwell | | Nov 1965 | gifted by the Hawke's Bay District Health Board |
| 97217 | 2020/1/34/41 | First Professional Cup, Nurse D P Sammons | | May 1965 | gifted by the Hawke's Bay District Health Board |
| 97219 | 2020/1/34/42 | First Professional Cup, Nurse E M Rainey | | May 1963 | gifted by the Hawke's Bay District Health Board |
| 97220 | 2020/1/34/43 | First Professional Cup, Nurse V J Wade | | Nov 1963 | gifted by the Hawke's Bay District Health Board |
| 97221 | 2020/1/34/44 | First Professional Cup, Nurse L A Hobson | | Nov 1962 | gifted by the Hawke's Bay District Health Board |
| 97223 | 2020/1/34/45 | Napier Hospital School of Nursing Graduation, May 1968 | | | gifted by the Hawke's Bay District Health Board |

| System ID | Accession No | Name/Title | Primary Maker (name only) | Primary Prod Date | Credit Line |
|-----------|--------------|---|---------------------------|-------------------|---|
| 97224 | 2020/1/34/46 | Napier Hospital School of Nursing, Class of 11 April 1957 | | 11 Apr 1957 | gifted by the Hawke's Bay District Health Board |
| 97226 | 2020/1/34/47 | Napier Hospital School of Nursing, Class of 11 April 1957 | | 11 Apr 1957 | gifted by the Hawke's Bay District Health Board |
| 97227 | 2020/1/34/48 | Napier Hospital School of Nursing, June 1956 Finals Group | | Jun 1956 | gifted by the Hawke's Bay District Health Board |
| 97229 | 2020/1/34/49 | Napier Hospital School of Nursing, Class of January 16th 1958 | | 16 Jan 1958 | gifted by the Hawke's Bay District Health Board |
| 97231 | 2020/1/34/50 | Nurses Milliken, Moore and Sang | | | gifted by the Hawke's Bay District Health Board |
| 97232 | 2020/1/34/51 | Nurses Scott, Taine and Fletcher | | | gifted by the Hawke's Bay District Health Board |
| 97234 | 2020/1/34/52 | Nurses Bick, Davies and Broad | | 17 Jan 1957 | gifted by the Hawke's Bay District Health Board |
| 97235 | 2020/1/34/53 | Napier Hospital School of Nursing group | | Jan 1958 | gifted by the Hawke's Bay District Health Board |
| 97244 | 2020/1/34/54 | Finalists: June 1956, Napier Hospital School of Nursing | | Jun 1956 | gifted by Hawke's Bay District Health Board |
| 97233 | 2020/1/34/55 | Staff Nurse Marion Ida Stuart | | Jun 1957 | gifted by Hawke's Bay District Health Board |
| 97238 | 2020/1/34/56 | Staff Nurse Marie Violet Bush | | Jun 1957 | gifted by Hawke's Bay District Health Board |
| 97247 | 2020/1/34/57 | Nurse Marie Therese Gilligan receiving prize | | Jun 1957 | gifted by Hawke's Bay District Health Board |
| 97242 | 2020/1/34/58 | Staff Nurse M M Rickard | | Jun 1956 | gifted by Hawke's Bay District Health Board |
| 97239 | 2020/1/34/59 | Staff Nurse U A B Petersen | | 11 Apr 1957 | gifted by Hawke's Bay District Health Board |
| 97230 | 2020/1/34/60 | Napier Hospital School of Nursing, December 1956 Graduates | | 11 Apr 1957 | gifted by Hawke's Bay District Health Board |
| 97236 | 2020/1/34/61 | First Professional Cup, Nurse R I Smith | | May 1966 | gifted by the Hawke's Bay District Health Board |
| 97182 | 2020/1/34/62 | First Professional Cup, Nurse B K Irwin | | Nov 1966 | gifted by the Hawke's Bay District Health Board |
| 97237 | 2020/1/34/63 | Napier Hospital School of Nursing Graduation Class, December 1960 | | Dec 1960 | gifted by the Hawke's Bay District Health Board |
| 97240 | 2020/1/34/64 | Staff Nurse D A Glynan | | | gifted by the Hawke's Bay District Health Board |
| 97241 | 2020/1/34/65 | Napier Hospital School of Nursing Finalists, June 1961 | | Jun 1961 | gifted by the Hawke's Bay District Health Board |
| 97243 | 2020/1/34/66 | Napier Hospital School of Nursing Finalists, June 1961 | | Jun 1961 | gifted by the Hawke's Bay District Health Board |
| 97245 | 2020/1/34/67 | Staff Nurse R M Sang | | | gifted by the Hawke's Bay District Health Board |
| 97246 | 2020/1/34/68 | Staff Nurse Jacobson, December 1960 graduate | | | gifted by the Hawke's Bay District Health Board |
| 97249 | 2020/1/34/69 | Napier Hospital School of Nursing Preliminary Class, September 1962 | | Sep 1962 | gifted by Hawke's Bay District Health Board |

| System ID | Accession No | Name/Title | Primary Maker (name only) | Primary Prod Date | Credit Line |
|-----------|--------------|---|---------------------------|-------------------|---|
| 97252 | 2020/1/34/70 | Napier Hospital School of Nursing Preliminary Class, January 1963 | | Jan 1963 | gifted by Hawke's Bay District Health Board |
| 97255 | 2020/1/34/71 | Napier Hospital School of Nursing Preliminary Class, July 1963 | | Jul 1963 | gifted by Hawke's Bay District Health Board |
| 97248 | 2020/1/34/72 | Staff Nurse J W Taylor, June 1961 Finalist | | | gifted by the Hawke's Bay District Health Board |
| 97250 | 2020/1/34/73 | Staff Nurse E A Fraser, June 1961 Finalist | | Jun 1961 | gifted by the Hawke's Bay District Health Board |
| 97251 | 2020/1/34/74 | Staff Nurse C M Oates, Florence Nightingale Award Winner | | | gifted by the Hawke's Bay District Health Board |
| 97253 | 2020/1/34/75 | Napier School of Nursing Finalists, June 1961 | | Jun 1961 | gifted by the Hawke's Bay District Health Board |
| 97254 | 2020/1/34/76 | Staff Nurse G E Payne, Florence Nightingale Award Winner | | Dec 1961 | gifted by the Hawke's Bay District Health Board |
| 97260 | 2020/1/34/77 | Final Professional Examination candidates, November 1965, Napier Hospital School of Nursing | | Nov 1965 | gifted by Hawke's Bay District Health Board |
| 97258 | 2020/1/34/78 | Staff Nurse V Wade | | Mar 1966 | gifted by Hawke's Bay District Health Board |
| 97257 | 2020/1/34/79 | Staff Nurse H Hussey | | Mar 1966 | gifted by Hawke's Bay District Health Board |
| 97259 | 2020/1/34/80 | Staff Nurse L Hobson | | Jun 1965 | gifted by Hawke's Bay District Health Board |
| 97256 | 2020/1/34/81 | Staff Nurse D Morris | | Jun 1965 | gifted by Hawke's Bay District Health Board |
| 97266 | 2020/1/34/82 | Napier Hospital School of Nursing Graduation Class, June 1957 | | Jun 1957 | gifted by the Hawke's Bay District Health Board |
| 97268 | 2020/1/34/83 | Napier Hospital Community Nurse Class, October 1969 | | Oct 1969 | gifted by the Hawke's Bay District Health Board |
| 97277 | 2020/1/34/84 | Napier Hospital School of Nursing Graduation Ceremony, March 1963 | | Mar 1963 | gifted by the Hawke's Bay District Health Board |
| 97279 | 2020/1/34/85 | Napier Hospital School of Nursing Final Professional Examination Group, December 1962 | | Dec 1962 | gifted by the Hawke's Bay District Health Board |
| 97281 | 2020/1/34/86 | Staff Nurse J C Davidson | | | gifted by the Hawke's Bay District Health Board |
| 97282 | 2020/1/34/87 | Napier Hospital School of Nursing Community Nurse Graduation, December 1969 | | Dec 1969 | gifted by the Hawke's Bay District Health Board |
| 97284 | 2020/1/34/88 | Staff Nurses C M Prebble and H R Crisp | | | gifted by the Hawke's Bay District Health Board |
| 97285 | 2020/1/34/89 | Staff Nurses B E Moore and L K Costello | | | gifted by the Hawke's Bay District Health Board |
| 97286 | 2020/1/34/90 | Napier Hospital School of Nursing Graduation Class, June 1964 | | Jun 1964 | gifted by the Hawke's Bay District Health Board |
| 97288 | 2020/1/34/91 | Staff Nurse K F Pennell | | | gifted by the Hawke's Bay District Health Board |

| System ID | Accession No | Name/Title | Primary Maker (name only) | Primary Prod Date | Credit Line |
|-----------|---------------|---|---------------------------|-------------------|---|
| 97291 | 2020/1/34/92 | Staff Nurse K M Gough | | | gifted by the Hawke's Bay District Health Board |
| 97292 | 2020/1/34/93 | Staff Nurse K R Roscoe | | | gifted by the Hawke's Bay District Health Board |
| 97294 | 2020/1/34/94 | Staff Nurse J Fortune | | | gifted by the Hawke's Bay District Health Board |
| 97295 | 2020/1/34/95 | Staff Nurse Hoyland | | | gifted by the Hawke's Bay District Health Board |
| 97298 | 2020/1/34/96 | Napier Hospital School of Nursing Graduation Class, May 1967 | | May 1967 | gifted by the Hawke's Bay District Health Board |
| 97299 | 2020/1/34/97 | Staff Nurse E Hutchinson | | | gifted by the Hawke's Bay District Health Board |
| 97301 | 2020/1/34/98 | Staff Nurse Berry | | | gifted by the Hawke's Bay District Health Board |
| 97303 | 2020/1/34/99 | Napier Hospital School of Nursing Graduation Class, May 1966 | | May 1966 | gifted by the Hawke's Bay District Health Board |
| 97304 | 2020/1/34/100 | Napier Hospital School of Nursing Graduation Class, September 1967 | | Sep 1967 | gifted by the Hawke's Bay District Health Board |
| 97270 | 2020/1/34/101 | Finalists: June 1963, Napier Hospital School of Nursing | | Jun 1963 | gifted by Hawke's Bay District Health Board |
| 97271 | 2020/1/34/102 | Staff Nurse R J R Hamlin | | | gifted by Hawke's Bay District Health Board |
| 97272 | 2020/1/34/103 | Staff Nurse P E Keats | | | gifted by Hawke's Bay District Health Board |
| 97273 | 2020/1/34/104 | Finalists: December 1963, Napier Hospital School of Nursing | | Dec 1963 | gifted by Hawke's Bay District Health Board |
| 97274 | 2020/1/34/105 | Staff Nurse A D Earney | | | gifted by Hawke's Bay District Health Board |
| 97275 | 2020/1/34/106 | Staff Nurse G E Payne, December 1961 | | Dec 1961 | gifted by Hawke's Bay District Health Board |
| 97276 | 2020/1/34/107 | Staff Nurse R L Dow | | | gifted by Hawke's Bay District Health Board |
| 97278 | 2020/1/34/108 | Staff Nurse A Stewart | | | gifted by Hawke's Bay District Health Board |
| 97283 | 2020/1/34/109 | Final Profession Examination candidates, June 1962, Napier Hospital School of Nursing | | Jun 1962 | gifted by Hawke's Bay District Health Board |
| 97280 | 2020/1/34/110 | Finalists: December 1961, Napier Hospital School of Nursing | | Dec 1961 | gifted by Hawke's Bay District Health Board |
| 97287 | 2020/1/34/111 | Final Professional Examination candidates, December 1964, Napier Hospital School of Nursing | | Dec 1964 | gifted by Hawke's Bay District Health Board |
| 97289 | 2020/1/34/112 | Final Professional Examination candidates, December 1964, Napier Hospital School of Nursing | | Dec 1964 | gifted by Hawke's Bay District Health Board |
| 97290 | 2020/1/34/113 | Final Professional Examination candidates, June 1965, Napier Hospital School of Nursing | | Jun 1965 | gifted by Hawke's Bay District Health Board |

| System ID | Accession No | Name/Title | Primary Maker (name only) | Primary Prod Date | Credit Line |
|-----------|---------------|--|---------------------------|-------------------|---|
| 97293 | 2020/1/34/114 | Staff Nurse G A Dobson | | | gifted by Hawke's Bay District Health Board |
| 97296 | 2020/1/34/115 | Staff Nurse K Hillsdon | | | gifted by Hawke's Bay District Health Board |
| 97297 | 2020/1/34/116 | Staff Nurse N Bryant | | | gifted by Hawke's Bay District Health Board |
| 97300 | 2020/1/34/117 | Graduation, November 1968, Napier Hospital School of Nursing | | Nov 1968 | gifted by Hawke's Bay District Health Board |
| 97302 | 2020/1/34/118 | Staff Nurse P Gough and Staff Nurse H M Reaney | | | gifted by Hawke's Bay District Health Board |
| 97305 | 2020/1/34/119 | Staff Nurse J S Muir | | | gifted by Hawke's Bay District Health Board |
| 97306 | 2020/1/34/120 | Staff Nurse E M Halliwell | | | gifted by Hawke's Bay District Health Board |
| 97307 | 2020/1/34/121 | Staff Nurse L E Minton | | | gifted by the Hawke's Bay District Health Board |
| 97308 | 2020/1/34/122 | Staff Nurse V Dickson | | | gifted by the Hawke's Bay District Health Board |
| 97309 | 2020/1/34/123 | Napier Hospital School of Nursing Community Nurse Graduation, September 1969 | | Sep 1969 | gifted by the Hawke's Bay District Health Board |
| 97310 | 2020/1/34/124 | Staff Nurse B K Irwin | | | gifted by the Hawke's Bay District Health Board |
| 97311 | 2020/1/34/125 | Napier Hospital School of Nursing Graduates, March 1970 | | Mar 1970 | gifted by the Hawke's Bay District Health Board |
| 97312 | 2020/1/34/126 | Napier Hospital Community Nurses' Graduation, November 1970 | | Nov 1970 | gifted by the Hawke's Bay District Health Board |
| 97321 | 2020/1/34/127 | Registered Community Nurse W Hill | | | gifted by the Hawke's Bay District Health Board |
| 97323 | 2020/1/34/128 | Registered Community Nurse S Pritchard | | | gifted by the Hawke's Bay District Health Board |
| 97320 | 2020/1/34/129 | Staff Nurse Bryant | | | gifted by the Hawke's Bay District Health Board |
| 97319 | 2020/1/34/130 | Staff Nurse J Warren | | | gifted by the Hawke's Bay District Health Board |
| 97326 | 2020/1/34/131 | Napier Hospital School of Nursing Graduation, September 1970 | | Sep 1970 | gifted by the Hawke's Bay District Health Board |
| 97327 | 2020/1/34/132 | Napier Hospital School of Nursing Graduation, March 1972 | | Mar 1972 | gifted by the Hawke's Bay District Health Board |
| 97328 | 2020/1/34/133 | Registered Community Nurse S Boulton | | | gifted by the Hawke's Bay District Health Board |
| 97313 | 2020/1/34/134 | Nurse B J-L Wong | | May 1968 | gifted by Hawke's Bay District Health Board |
| 97314 | 2020/1/34/135 | Nurse J E Boese | | Nov 1968 | gifted by Hawke's Bay District Health Board |
| 97318 | 2020/1/34/136 | Staff Nurse J G Viles receiving prize | | Jun 1963 | gifted by Hawke's Bay District Health Board |
| 97317 | 2020/1/34/137 | Staff Nurse J G Viles | | | gifted by Hawke's Bay District Health Board |

| System ID | Accession No | Name/Title | Primary Maker (name only) | Primary Prod Date | Credit Line |
|-----------|---------------|--|---------------------------|-------------------|---|
| 97315 | 2020/1/34/138 | Staff Nurse P A Manning | | | gifted by Hawke's Bay District Health Board |
| 97316 | 2020/1/34/139 | Staff Nurse M J Rust | | | gifted by Hawke's Bay District Health Board |
| 97322 | 2020/1/34/140 | Staff Nurse M S Moran | | | gifted by Hawke's Bay District Health Board |
| 97325 | 2020/1/34/141 | Staff Nurse L M Jacques | | | gifted by Hawke's Bay District Health Board |
| 97324 | 2020/1/34/142 | Finalists, December 1957, Graduation Ceremony, Napier Hospital School of Nursing | | Dec 1957 | gifted by Hawke's Bay District Health Board |
| 97337 | 2020/1/34/143 | Staff Nurse J E Powell | | | gifted by Hawke's Bay District Health Board |
| 97334 | 2020/1/34/144 | Staff Nurse J E Mark | | | gifted by Hawke's Bay District Health Board |
| 97339 | 2020/1/34/145 | Finalists, June 1958, Graduation Ceremony, Napier Hospital School of Nursing | | Jun 1958 | gifted by Hawke's Bay District Health Board |
| 97329 | 2020/1/34/146 | Napier Hospital School of Nursing Graduation Class, June 1959 | | Jun 1959 | gifted by the Hawke's Bay District Health Board |
| 97330 | 2020/1/34/147 | Napier Hospital School of Nursing finalists, December 1958 | | Dec 1958 | gifted by the Hawke's Bay District Health Board |
| 97331 | 2020/1/34/148 | Staff Nurse M T Gilligan | | | gifted by the Hawke's Bay District Health Board |
| 97332 | 2020/1/34/149 | Staff Nurse K R M Campbell | | | gifted by the Hawke's Bay District Health Board |
| 97333 | 2020/1/34/150 | Staff Nurse P Youel | | | gifted by the Hawke's Bay District Health Board |
| 97335 | 2020/1/34/151 | Napier Hospital School of Nursing Community Nurse Class, October 1965 | | Oct 1965 | gifted by the Hawke's Bay District Health Board |
| 97336 | 2020/1/34/152 | Napier Hospital School of Nursing Community Nurse Class, April 1966 | | Apr 1966 | gifted by the Hawke's Bay District Health Board |
| 97338 | 2020/1/34/153 | Napier Hospital School of Nursing Community Nurse Class, September 1968 | | Sep 1968 | gifted by the Hawke's Bay District Health Board |
| 97341 | 2020/1/34/154 | Staff Nurse R M Sang | | 1960 | gifted by the Hawke's Bay District Health Board |
| 97342 | 2020/1/34/155 | Staff Nurse L M Milliken | | | gifted by the Hawke's Bay District Health Board |
| 97344 | 2020/1/34/156 | Napier Hospital School of Nursing Graduation, June 1960 | | Jun 1960 | gifted by the Hawke's Bay District Health Board |
| 97345 | 2020/1/34/157 | Napier Hospital School of Nursing Graduation Class, June 1959 | | Jun 1959 | gifted by the Hawke's Bay District Health Board |
| 97348 | 2020/1/34/158 | Second Reunion, Napier Hospital Trained Nurses, November 1959 | | 07 Nov 1959 | gifted by the Hawke's Bay District Health Board |
| 97351 | 2020/1/34/159 | Napier Hospital School of Nursing Graduation Class, June 1959 | | Jun 1959 | gifted by the Hawke's Bay District Health Board |
| 97346 | 2020/1/34/160 | Registered Community Nurse B M Baillie | | | gifted by Hawke's Bay District Health Board |

| System ID | Accession No | Name/Title | Primary Maker (name only) | Primary Prod Date | Credit Line |
|-----------|---------------|---|---------------------------|-------------------|---|
| 97347 | 2020/1/34/161 | Registered Community Nurse M O Reti | | | gifted by Hawke's Bay District Health Board |
| 97343 | 2020/1/34/162 | Registered Community Nurse D King | | | gifted by Hawke's Bay District Health Board |
| 97349 | 2020/1/34/163 | Community Nurses' Graduation, Napier Hospital School of Nursing | | Dec 1968 | gifted by Hawke's Bay District Health Board |
| 97350 | 2020/1/34/164 | Community Nurses' Graduation, Napier Hospital School of Nursing | | May 1969 | gifted by Hawke's Bay District Health Board |
| 97353 | 2020/1/34/165 | Community Nurses' Graduation, Napier Hospital School of Nursing | | Apr 1963 | gifted by Hawke's Bay District Health Board |
| 97340 | 2020/1/34/166 | Community Nurse M A Sullivan | | Jun 1965 | gifted by Hawke's Bay District Health Board |
| 97352 | 2020/1/34/167 | Community Nurses' Graduation, Napier Hospital School of Nursing | | Oct 1963 | gifted by Hawke's Bay District Health Board |
| 97262 | 2020/1/34/168 | Registered Community Nurse B Kelliher | | | gifted by Hawke's Bay District Health Board |
| 97261 | 2020/1/34/169 | Registered Community Nurse T Solomon | | | gifted by Hawke's Bay District Health Board |
| 97263 | 2020/1/34/170 | Registered Community Nurse W G Stokes | | | gifted by Hawke's Bay District Health Board |
| 97264 | 2020/1/34/171 | Registered Community Nurse C A Kennerley | | | gifted by Hawke's Bay District Health Board |
| 97265 | 2020/1/34/172 | Registered Community Nurse R B Simkin | | | gifted by Hawke's Bay District Health Board |
| 97269 | 2020/1/34/173 | Community Nurses' Graduation, May 1970 | | May 1970 | gifted by Hawke's Bay District Health Board |
| 97267 | 2020/1/34/174 | Registered Community Nurse I M Trustrum | | | gifted by Hawke's Bay District Health Board |
| 97015 | 2020/1/35 | Postcard, Nurses' Home and Hospital, Napier | John Chadwick | | gifted by the Hawke's Bay District Health Board |
| 97017 | 2020/1/36 | Postcard, Women's Ward, 1912 | | | gifted by the Hawke's Bay District Health Board |
| 97016 | 2020/1/37 | Napier Hospital | | | gifted by the Hawke's Bay District Health Board |
| 97018 | 2020/1/38 | Paynter | | | gifted by the Hawke's Bay District Health Board |
| 97019 | 2020/1/39 | Nurses exercising in formation | | | gifted by the Hawke's Bay District Health Board |
| 97021 | 2020/1/40 | Nurses exercising in formation | | | gifted by the Hawke's Bay District Health Board |
| 97022 | 2020/1/41 | Nurses on Hinepare roof | | | gifted by the Hawke's Bay District Health Board |
| 97024 | 2020/1/42 | Nurses on Hinepare roof | | | gifted by the Hawke's Bay District Health Board |
| 97025 | 2020/1/43 | Nurses on Hinepare roof | | | gifted by the Hawke's Bay District Health Board |
| 97026 | 2020/1/44 | Nurses on Hinepare roof | Russell Orr | | gifted by the Hawke's Bay District Health Board |
| 97023 | 2020/1/45 | Nurses on stairwell at Hinepare | Russell Orr | | gifted by the Hawke's Bay District Health Board |

| System ID | Accession No | Name/Title | Primary Maker (name only) | Primary Prod Date | Credit Line |
|-----------|--------------|--|---------------------------|-------------------|---|
| 97027 | 2020/1/46 | Nurses at entrance to Hinepare | Russell Orr | | gifted by the Hawke's Bay District Health Board |
| 97029 | 2020/1/47 | Nurse in room at Hinepare | Russell Orr | | gifted by the Hawke's Bay District Health Board |
| 97028 | 2020/1/48 | Nurses in kitchen at Hinepare | Russell Orr | | gifted by the Hawke's Bay District Health Board |
| 97031 | 2020/1/49 | Nurses in dining room at Hinepare | Russell Orr | | gifted by the Hawke's Bay District Health Board |
| 97032 | 2020/1/50 | Nurses in kitchen at Hinepare | Russell Orr | | gifted by the Hawke's Bay District Health Board |
| 97033 | 2020/1/51 | Nurses around piano at Hinepare | Russell Orr | | gifted by the Hawke's Bay District Health Board |
| 97034 | 2020/1/52 | Minister of Health delivering speech at opening of Hinepare nurses' home, May 1954 | Russell Orr | | gifted by the Hawke's Bay District Health Board |
| 97035 | 2020/1/53 | Minister of Health and Napier Hospital representatives, May 1954 | Russell Orr | | gifted by the Hawke's Bay District Health Board |
| 97020 | 2020/1/54 | Nurses in lounge at Hinepare | Russell Orr | | gifted by the Hawke's Bay District Health Board |
| 97030 | 2020/1/55 | Nurses in lounge at Hinepare | Russell Orr | | gifted by the Hawke's Bay District Health Board |
| 97036 | 2020/1/56 | Nurses around piano at Hinepare | Russell Orr | | gifted by the Hawke's Bay District Health Board |
| 97037 | 2020/1/57 | Swimming pool at Hinepare | | | gifted by the Hawke's Bay District Health Board |
| 97038 | 2020/1/58 | Nurse in room at Hinepare | | | gifted by the Hawke's Bay District Health Board |
| 97039 | 2020/1/59 | Nurses in lounge at Hinepare nurses' home | | | gifted by the Hawke's Bay District Health Board |
| 97040 | 2020/1/60 | Dining room at Hinepare nurses' home | | | gifted by the Hawke's Bay District Health Board |
| 97041 | 2020/1/61 | Dining room at Hinepare nurses' home | | | gifted by the Hawke's Bay District Health Board |
| 97042 | 2020/1/62 | Swimming pool at Hinepare | | | gifted by the Hawke's Bay District Health Board |
| 97043 | 2020/1/63 | Napier Hospital School of Nursing tutorial | | | gifted by the Hawke's Bay District Health Board |
| 97044 | 2020/1/64 | Napier Hospital nurses in kitchen | | | gifted by the Hawke's Bay District Health Board |
| 97045 | 2020/1/65 | Napier Hospital trained nurses' reunion, 1969 | | 1969 | gifted by the Hawke's Bay District Health Board |
| 97047 | 2020/1/66 | Napier Hospital trained nurses reunion | | | gifted by the Hawke's Bay District Health Board |
| 97048 | 2020/1/67 | Nurses reunion | | | gifted by the Hawke's Bay District Health Board |
| 97050 | 2020/1/68 | Napier Hospital reunion group, 1959 | | | gifted by the Hawke's Bay District Health Board |
| 97049 | 2020/1/69 | Napier Hospital trained nurses reunion group, 1959 | | 1959 | gifted by the Hawke's Bay District Health Board |
| 97051 | 2020/1/70 | Cake cutting, Napier Hospital nurses' reunion, 1959 | | | gifted by the Hawke's Bay District Health Board |
| 97046 | 2020/1/71 | Napier Hospital trained nurses reunion committee, 1969 | | 1969 | gifted by the Hawke's Bay District Health Board |

| System ID | Accession No | Name/Title | Primary Maker (name only) | Primary Prod Date | Credit Line |
|-----------|--------------|--|---------------------------|-------------------|---|
| 97052 | 2020/1/72 | Refresher course for Napier Hospital nurses, 1962 | | 1962 | gifted by the Hawke's Bay District Health Board |
| 97053 | 2020/1/73 | Napier Hospital reunion, 1959 | | 1959 | gifted by the Hawke's Bay District Health Board |
| 97054 | 2020/1/74 | Napier Hospital School of Nursing prizegiving, June 1959 | | 1959 | gifted by the Hawke's Bay District Health Board |
| 97055 | 2020/1/75 | Napier Hospital nurses reunion, 1969 | | 1969 | gifted by the Hawke's Bay District Health Board |
| 97056 | 2020/1/76 | Napier Hospital School of Nursing group, December 1954 | | Dec 1954 | gifted by the Hawke's Bay District Health Board |
| 97057 | 2020/1/77 | Sister Peed, Matron Henderson and three staff nurses, Napier Hospital, December 1954 | | Dec 1954 | gifted by the Hawke's Bay District Health Board |
| 97058 | 2020/1/78 | Napier Hospital School of Nursing graduates, June 1952 | | Jun 1952 | gifted by the Hawke's Bay District Health Board |
| 97060 | 2020/1/79 | Napier Hospital nurses | | | gifted by the Hawke's Bay District Health Board |
| 97059 | 2020/1/80 | Napier Hospital School of Nursing graduation ceremony, April 1957 | | Apr 1957 | gifted by the Hawke's Bay District Health Board |
| 97061 | 2020/1/81 | Staff Nurse Aufai with friends at the Napier School of Nursing graduation ceremony, April 1957 | | Apr 1957 | gifted by the Hawke's Bay District Health Board |
| 97062 | 2020/1/82 | Napier Hospital Staff Nurse Faavoa Aufai | | | gifted by the Hawke's Bay District Health Board |
| 97063 | 2020/1/83 | Carols by nursing staff, Christmas 1959 | | Dec 1959 | gifted by the Hawke's Bay District Health Board |
| 97064 | 2020/1/84 | Napier Hospital School of Nursing graduates, June 1960 | | Jun 1960 | gifted by the Hawke's Bay District Health Board |
| 97065 | 2020/1/85 | Napier Hospital School of Nursing graduate | | | gifted by the Hawke's Bay District Health Board |
| 97066 | 2020/1/86 | Napier Hospital Staff Nurse C K Rihia | | 1961 | gifted by the Hawke's Bay District Health Board |
| 97067 | 2020/1/87 | Miss Beth Simmonds | | 1961 | gifted by the Hawke's Bay District Health Board |
| 97068 | 2020/1/88 | Staff Nurse B L Floyd | | Jun 1961 | gifted by the Hawke's Bay District Health Board |
| 97069 | 2020/1/89 | Napier Hospital nursing sisters | | | gifted by the Hawke's Bay District Health Board |
| 97070 | 2020/1/90 | Napier Hospital School of Nursing graduates, October 1967 | | Oct 1967 | gifted by the Hawke's Bay District Health Board |
| 97071 | 2020/1/91 | Napier Hospital School of Nursing graduates | | | gifted by the Hawke's Bay District Health Board |
| 97072 | 2020/1/92 | Napier Hospital float | | 1958 | gifted by the Hawke's Bay District Health Board |
| 97073 | 2020/1/93 | Napier Hospital float | | 1958 | gifted by the Hawke's Bay District Health Board |
| 97074 | 2020/1/94 | Napier Hospital float | | 1958 | gifted by the Hawke's Bay District Health Board |
| 97075 | 2020/1/95 | Centennial Queen | | 1958 | gifted by the Hawke's Bay District Health Board |
| 97076 | 2020/1/96 | Bones Ballet | | 1956 | gifted by the Hawke's Bay District Health Board |

| System ID | Accession No | Name/Title | Primary Maker (name only) | Primary Prod Date | Credit Line |
|-----------|--------------|---|---------------------------|-------------------|---|
| 97077 | 2020/1/97 | Cake cutting at Napier Hospital trained nurses reunion | | 1980 | gifted by the Hawke's Bay District Health Board |
| 97078 | 2020/1/98 | Community nurses from the Napier Hospital School of Nursing | | 1958 | gifted by the Hawke's Bay District Health Board |
| 97079 | 2020/1/99 | Entrance, McHardy Maternity Home | | | gifted by the Hawke's Bay District Health Board |
| 97080 | 2020/1/100 | Nursery, McHardy Maternity Home | | | gifted by the Hawke's Bay District Health Board |
| 97081 | 2020/1/101 | Milk room, McHardy Maternity Home | | | gifted by the Hawke's Bay District Health Board |
| 97082 | 2020/1/102 | Back room, McHardy Maternity Home | | | gifted by the Hawke's Bay District Health Board |
| 97083 | 2020/1/103 | Delivery room, McHardy Maternity Home | | | gifted by the Hawke's Bay District Health Board |
| 97084 | 2020/1/104 | McHardy Maternity Home | | | gifted by the Hawke's Bay District Health Board |
| 97085 | 2020/1/105 | McHardy Maternity Home | | | gifted by the Hawke's Bay District Health Board |
| 97086 | 2020/1/106 | Mrs L M Fleming | | | gifted by the Hawke's Bay District Health Board |
| 97087 | 2020/1/107 | Napier Hospital nursing staff, 1910 | | | gifted by the Hawke's Bay District Health Board |
| 97088 | 2020/1/108 | Surgical operation being performed at Napier Hospital | | | gifted by the Hawke's Bay District Health Board |
| 97089 | 2020/1/109 | Nurses in kitchen at Napier Hospital | | | gifted by the Hawke's Bay District Health Board |
| 97090 | 2020/1/110 | Nursing tutorial at Napier Hospital | | | gifted by the Hawke's Bay District Health Board |
| 97091 | 2020/1/111 | Ward at Napier Hospital | | | gifted by the Hawke's Bay District Health Board |
| 97092 | 2020/1/112 | Rear view of nurses' home at Napier Hospital | | | gifted by the Hawke's Bay District Health Board |
| 97093 | 2020/1/113 | Nurses on verandah of Midgeley Ward | | | gifted by the Hawke's Bay District Health Board |
| 97094 | 2020/1/114 | Napier Hospital, 1895 | | | gifted by the Hawke's Bay District Health Board |
| 97095 | 2020/1/115 | Napier Hospital, 1948 | | | gifted by the Hawke's Bay District Health Board |
| 97096 | 2020/1/116 | Napier Hospital, 1950 | | | gifted by the Hawke's Bay District Health Board |
| 97099 | 2020/1/117 | Napier Hospital nurses parade float | | | gifted by the Hawke's Bay District Health Board |
| 97123 | 2020/2/2 | Earthquake damage to buildings in Napier | | | gifted by Viv Green |
| 97124 | 2020/2/3 | Earthquake damage to Blythes building in Napier | | | gifted by Viv Green |
| 97127 | 2020/2/4 | Earthquake damage, Napier | | | gifted by Viv Green |
| 97126 | 2020/2/5 | Earthquake damage, Byron Street, Napier | | | gifted by Viv Green |
| 97128 | 2020/2/6 | Earthquake damaged E & D building, Napier | | | gifted by Viv Green |
| 97143 | 2020/2/7 | Man sitting in wrecked car | | | gifted by Viv Green |
| 97144 | 2020/2/8 | Earthquake damaged building | | | gifted by Viv Green |

| System ID | Accession No | Name/Title | Primary Maker (name only) | Primary Prod Date | Credit Line |
|-----------|--------------|---|------------------------------------|-------------------|--|
| 97145 | 2020/2/9 | People in front of collapsed building | | | gifted by Viv Green |
| 97146 | 2020/2/10 | Earthquake damaged building, Napier | | | gifted by Viv Green |
| 97147 | 2020/2/11 | Earthquake damaged building | | | gifted by Viv Green |
| 97148 | 2020/2/12 | Man walking past scene of earthquake devastation | | | gifted by Viv Green |
| 97149 | 2020/2/13 | Earthquake derailment | | | gifted by Viv Green |
| 97150 | 2020/2/14 | Damaged buildings, Napier | | | gifted by Viv Green |
| 97152 | 2020/2/15 | Earthquake damage to St Paul's church, Napier | | | gifted by Viv Green |
| 97153 | 2020/2/16 | Collapsed buildings beside railway line | | | gifted by Viv Green |
| 97155 | 2020/2/17 | Gaiety Theatre, Napier | | | gifted by Viv Green |
| 97154 | 2020/2/18 | Men searching earthquake debris | | | gifted by Viv Green |
| 97156 | 2020/2/19 | People in street after earthquake | | | gifted by Viv Green |
| 97157 | 2020/2/20 | People searching rubble after earthquake | | | gifted by Viv Green |
| 97158 | 2020/2/21 | Earthquake damage at Napier port | | | gifted by Viv Green |
| 97161 | 2020/2/22 | Woman beside damaged railway tracks | | | gifted by Viv Green |
| 97162 | 2020/2/23 | Earthquake damaged buildings | | | gifted by Viv Green |
| 97163 | 2020/2/24 | Earthquake damaged building | | | gifted by Viv Green |
| 97164 | 2020/2/25 | Boer War Memorial | | | gifted by Viv Green |
| 97165 | 2020/2/26 | Park Island memorial | | | gifted by Viv Green |
| 97120 | 2020/3/1 | Wooden box | | | gifted by Ruth Munro on behalf of Margaret Hay |
| 97130 | 2020/3/2 | Compass set | | | gifted by Ruth Munro on behalf of Margaret Hay |
| 97131 | 2020/3/3 | Compass | | | gifted by Ruth Munro on behalf of Margaret Hay |
| 97132 | 2020/3/4 | Wooden ruler | | | gifted by Ruth Munro on behalf of Margaret Hay |
| 97134 | 2020/3/5 | Pencils | The Royal Sovereign Pencil Co. Ltd | | gifted by Ruth Munro on behalf of Margaret Hay |
| 97141 | 2020/3/6 | Technical drawing template | | | gifted by Ruth Munro on behalf of Margaret Hay |
| 97142 | 2020/3/7 | Luggage tag and key | | | gifted by Ruth Munro on behalf of Margaret Hay |
| 97133 | 2020/3/8 | Book, Surveying | T Baker; Crosby Lockwood and Co | 1883 | gifted by Ruth Munro on behalf of Margaret Hay |
| 97136 | 2020/3/9 | Rubber stamp, To be returned to J. A. Louis Hay | | | gifted by Ruth Munro on behalf of Margaret Hay |
| 97137 | 2020/3/10 | Rubber stamp, The New Zealand Institute of Architects | | | gifted by Ruth Munro on behalf of Margaret Hay |
| 97135 | 2020/3/11 | Rubber business stamp | | | gifted by Ruth Munro on behalf of Margaret Hay |
| 97139 | 2020/3/12 | James Hay at survey camp | | | gifted by Ruth Munro on behalf of Margaret Hay |

| System ID | Accession No | Name/Title | Primary Maker (name only) | Primary Prod Date | Credit Line |
|-----------|--------------|--|------------------------------|-------------------|--|
| 97140 | 2020/3/13 | Illuminated address, copy, J H Edmundson Esq | | | gifted by Ruth Munro on behalf of Margaret Hay |
| 97138 | 2020/3/14 | Architectural drawing, unidentified house | | | gifted by Ruth Munro on behalf of Margaret Hay |
| 97355 | 2020/4/1 | Dress | Lani Morris; Maida Hume | | gifted by Lani Morris |
| 97354 | 2020/4/2 | Jumpsuit | Lani Morris; Beth Greensmith | | gifted by Lani Morris |
| 97358 | 2020/4/3 | Three piece ensemble | Lani Morris; Beth Greensmith | | gifted by Lani Morris |
| 97369 | 2020/5/1 | Fitter's book | Tomoana Freezing Works | | gifted by Ian McPherson |
| 97373 | 2020/5/2 | Terms of dispute settlement for meat processing industry employees | | | gifted by Ian McPherson |
| 97371 | 2020/5/3 | Report, Plant Capacities | Weddel New Zealand | Feb 1991 | gifted by Ian McPherson |
| 97376 | 2020/5/4 | Collective Employment Contract 1999-2002, Whakatu Coldstores Limited | Whakatu Coldstores Limited | | gifted by Ian McPherson |
| 97374 | 2020/5/5 | List, Slaughter Floor Manning | Tomoana Freezing Works | | gifted by Ian McPherson |
| 97377 | 2020/5/6 | Form, Daily Labour Return | Tomoana Freezing Works | | gifted by Ian McPherson |
| 97378 | 2020/5/7 | Plan, Tomoana Freezing Works | Tomoana Freezing Works | | gifted by Ian McPherson |
| 97380 | 2020/5/8 | Bagnall steam shunter | | | gifted by Ian McPherson |
| 97381 | 2020/5/9/1 | Hawke's Bay Farmers' Meat Company freezing works | | | gifted by Ian McPherson |
| 97590 | 2020/5/9/2 | Hawke's Bay Farmers' Meat Company freezing works | | | gifted by Ian McPherson |
| 97591 | 2020/5/9/3 | Hawke's Bay Farmers' Meat Company freezing works | | | gifted by Ian McPherson |
| 97592 | 2020/5/9/4 | Hawke's Bay Farmers' Meat Company freezing works | | | gifted by Ian McPherson |
| 97593 | 2020/5/9/5 | Hawke's Bay Farmers' Meat Company freezing works | | | gifted by Ian McPherson |
| 97594 | 2020/5/9/6 | Hawke's Bay Farmers' Meat Company freezing works | | | gifted by Ian McPherson |
| 97595 | 2020/5/9/7 | Hawke's Bay Farmers' Meat Company freezing works | | | gifted by Ian McPherson |
| 97596 | 2020/5/9/8 | Hawke's Bay Farmers' Meat Company retail store, Waipukurau | | | gifted by Ian McPherson |
| 97597 | 2020/5/9/9 | MAF recruits | | | gifted by Ian McPherson |
| 97598 | 2020/5/9/10 | Hawke's Bay Farmers' Meat Company freezing workers | | | gifted by Ian McPherson |
| 97599 | 2020/5/9/11 | Hawke's Bay Farmers' Meat Company freezing worker | | | gifted by Ian McPherson |
| 97600 | 2020/5/9/12 | Hawke's Bay Farmers' Meat Company freezing workers | | | gifted by Ian McPherson |
| 97601 | 2020/5/9/13 | Hawke's Bay Farmers' Meat Company freezing works | | | gifted by Ian McPherson |
| 97602 | 2020/5/9/14 | Hawke's Bay Meat Company freezing works | | | gifted by Ian McPherson |

| System ID | Accession No | Name/Title | Primary Maker (name only) | Primary Prod Date | Credit Line |
|-----------|--------------|---|---------------------------|-------------------|---|
| 97603 | 2020/5/9/15 | Freezing works irrigation, Takapau | | | gifted by Ian McPherson |
| 97604 | 2020/5/9/16 | Freezing works irrigation sluice, Takapau | | | gifted by Ian McPherson |
| 97605 | 2020/5/9/17 | Sheep farm | | | gifted by Ian McPherson |
| 97606 | 2020/5/9/18 | Irrigation, Takapau | | | gifted by Ian McPherson |
| 97607 | 2020/5/9/19 | Fencing paddock on sheep farm | | | gifted by Ian McPherson |
| 97608 | 2020/5/9/20 | Farmer inspecting paddock; Empty T2 | | | gifted by Ian McPherson |
| 97609 | 2020/5/9/21 | Hawke's Bay Farmers' Meat Company freezing works | | | gifted by Ian McPherson |
| 97610 | 2020/5/9/22 | Hawke's Bay Farmers' Meat Company freezing works staff, Takapau | | | gifted by Ian McPherson |
| 97611 | 2020/5/9/23 | Devco/Meat boning staff Christmas lunch | | | gifted by Ian McPherson |
| 97612 | 2020/5/9/24 | Meat boning staff Christmas lunch | | | gifted by Ian McPherson |
| 97613 | 2020/5/9/25 | Export lamb | | | gifted by Ian McPherson |
| 97614 | 2020/5/9/26 | Hawke's Bay Farmers' Meat Company freezing works | | | gifted by Ian McPherson |
| 97166 | 2020/6/1 | Wreck of the Montmorency exposed by the earthquake | Keith Ormston Thomson | | gifted by Noeline McQueen |
| 97167 | 2020/6/2 | Couple amidst ruins of Napier Hospital | Keith Ormston Thomson | | gifted by Noeline McQueen |
| 97168 | 2020/6/3 | Earthquake damage to Napier wharf | Keith Ormston Thomson | | gifted by Noeline McQueen |
| 97169 | 2020/6/4 | Napier, May 1924 | Keith Ormston Thomson | | gifted by Noeline McQueen |
| 97170 | 2020/6/5 | Esplanade, Napier, May 1924 | Keith Ormston Thomson | | gifted by Noeline McQueen |
| 97171 | 2020/6/6 | Gisborne, May 1924 | Keith Ormston Thomson | | gifted by Noeline McQueen |
| 97172 | 2020/6/7 | Gisborne, May 1924 | Keith Ormston Thomson | | gifted by Noeline McQueen |
| 97173 | 2020/6/8 | Model Pa, Wakarewarewa | Keith Ormston Thomson | | gifted by Noeline McQueen |
| 97112 | 2020/7 | Dinner set | Alfred Meakin | 1937 | gifted by Paul Dobson in memory of Ivan and Evelyn Dobson |
| 97180 | 2020/8 | Ngaire Porter | | | gifted by Audrey Nelson |
| 97129 | 2020/9 | Plan, Napier Cemetery | Alfred Jarman | 1884 | gifted by Napier City Council |
| 97366 | 2020/10 | Diary pages, McKain family | | | gifted by Joan McKain |
| 97364 | 2020/11/1 | Omatua, Rissington, Hawke's Bay, 1929 | | | gifted by the Absolom family |
| 97365 | 2020/11/2 | Omatua | | | gifted by the Absolom family |
| 97367 | 2020/11/3 | Omatua | Margaret Heavey | 18 Apr 2000 | gifted by the Absolom family |
| 97151 | 2020/12/1 | Wedding dress | | | gifted by Ann Everett |
| 97160 | 2020/12/2 | Marriage certificate, Percy Everett and Muriel Goddard | | | gifted by Ann Everett |

| System ID | Accession No | Name/Title | Primary Maker (name only) | Primary Prod Date | Credit Line |
|-----------|--------------|--|------------------------------------|-------------------|--|
| 97174 | 2020/12/3 | Passport, Percy Everett and Muriel Everett | Dominion of New Zealand | 30 Dec 1927 | gifted by Ann Everett |
| 97175 | 2020/12/4 | Wedding photograph, Percy Everett and Muriel Goddard | Deighton Studios | Dec 1927 | gifted by Ann Everett |
| 97176 | 2020/12/5 | Wedding invitation, Percy Everett and Muriel Goddard | Deighton Studios | 1927 | gifted by Ann Everett |
| 97178 | 2020/12/6 | Newspaper cuttings | | | gifted by Ann Everett |
| 98552 | 2020/13 | Napier Citizens' Control Committee Identification Card issued to Leslie A Pawson | Napier Citizens' Control Committee | 1931 | gifted by Dave Pawson |
| 98565 | 2020/14/1 | Dress | Barbara Herrick; Babs Radón | | gifted by Clothing and Textile Sciences, University of Otago |
| 98566 | 2020/14/2 | Dress | Barbara Herrick; Babs Radón | | gifted by Clothing and Textile Sciences, University of Otago |
| 97372 | 2020/15/1 | Rifle Competition, Hawke's Bay NZ, Challenge Shield | | | gifted by Adrian Coleman |
| 97370 | 2020/15/2 | Coleman Shield Competition Cup, Hawke's Bay | | | gifted by Adrian Coleman |
| 97375 | 2020/15/3 | Coleman Shield Competition Cup, Hawke's Bay | | | gifted by Adrian Coleman |
| 98569 | 2020/16/1 | Coleman Champion Belt | | | gifted by Adrian Coleman |
| 98568 | 2020/16/2 | Minute Book, Coleman Shield Committee, 1895-1911 | | | gifted by Adrian Coleman |
| 98588 | 2020/17/1 | Two piece outfit | Minh Ta | | gifted by Beryl Browne |
| 98590 | 2020/17/2 | Two piece outfit | Minh Ta | | gifted by Beryl Browne |
| 98585 | 2020/18/1 | Greeting Card, Wellington to Napier in a Puffer | | | gifted by Janet Allan |
| 98570 | 2020/18/2 | Baby shoes | | | gifted by Janet Allan |
| 98571 | 2020/18/3 | Baby glove | | | gifted by Janet Allan |
| 98572 | 2020/18/4 | Baby bloomers | | | gifted by Janet Allan |
| 98587 | 2020/18/5 | Poster, Destination Art Deco Napier New Zealand | Christopher Matthews | Feb 1985 | gifted by Janet Allan |
| 98591 | 2020/20 | He Haerenga Makariri - A Winter Journey | Joanne Bains | | gifted by Joanne Bains |