



NAPIER
CITY COUNCIL
Te Kaunihera o Ahuriri

Napier Civic Building
231 Hastings Street
t +64 6 835 7579
e info@napier.govt.nz
www.napier.govt.nz

NAPIER PEOPLE AND PLACES COMMITTEE

Open Agenda

Meeting Date: Thursday 23 March 2023

Time: 9.30am

Venue: The Ballroom
War Memorial Centre
Marine Parade
Napier

Livestreamed via Council's Facebook site

Committee Members **Chair:** Councillor McGrath

Members: Mayor Wise, Councillor Boag (Deputy Chair), Deputy Mayor Brosnan, Councillors Browne, Chrystal, Crown, Greig, Mawson, Price, Simpson, Tareha and Taylor

Officer Responsible Executive Director Community Services

Administration Governance Team

Next Napier People and Places Committee Meeting
Thursday 4 May 2023

2022-2025 TERMS OF REFERENCE - NAPIER PEOPLE AND PLACES COMMITTEE

<i>Chairperson</i>	<i>Councillor McGrath</i>
<i>Deputy Chairperson</i>	<i>Councillor Boag</i>
<i>Membership</i>	<i>Mayor and Councillors (13)</i> <i>Ngā Mānukanuka o te Iwi representatives (2)</i>
<i>Quorum</i>	<i>8</i>
<i>Meeting frequency</i>	<i>At least 6 weekly (or as required)</i>
<i>Officer Responsible</i>	<i>Executive Director Community Services</i>

Purpose

To provide governance oversight for all community strategies, housing and community facilities, visitor experiences, matters relating to diversity and accessibility, and sport and recreation. The Committee adopts a wide focus by considering policy implications that impact on the health, safety and well-being of the community.

Delegated Powers to Act

To exercise and perform Council's functions, powers and duties within its area of responsibility, excluding those matters reserved to Council by law or by resolution of Council, specifically including the following:

1. Community development, feedback and well-being in terms of Council's agreed City Vision principles
2. Community resilience and sustainability
3. Community Social and Cultural needs
4. Grants and community funding initiatives
5. Community projects and facilities
6. Community housing and associated wellbeing
7. Positive aging and youth accessibility
8. Events, tourism and visitor experiences
9. Sport and recreation
10. To consider reports from the Arts Advisory Panel, Community Services Grants Subcommittee, Creative Communities New Zealand, and any other arts, culture and heritage related organisations where Council is represented.
11. To adopt or amend policies or strategies related to the Committee's area of responsibility, provided the new or amended policy does not conflict with an existing policy or strategy.
12. To monitor performance (including budget and performance targets in the Long Term Plan) for the Committee's areas of responsibility and authority.
13. To resolve any other matters which fall outside the area of responsibility of all Standing Committees, but where the Mayor in consultation with the Chief Executive considers it desirable that the matter is considered by a Standing Committee in the first instance.

Power to Recommend

The Committee may recommend to Council and/or any standing committee as it deems appropriate.

The Committee may make a recommendation to the Annual Plan or Long Term Plan relevant to the Committee's responsibilities. This includes recommendations on fees and charges for activities within the Committee's responsibility and which are not otherwise delegated to officers.

The Committee must make a recommendation to Council or the Chief Executive if the decision considered appropriate is not consistent with, or is contrary to, any policy (including the Annual Plan or Long Term Plan) established by the Council.

ORDER OF BUSINESS

Karakia

Apologies

Nil

Conflicts of interest

Public forum

Nil

Announcements by the Mayor

Announcements by the Chairperson including notification of minor matters not on the agenda

Note: re minor matters only - refer LGOIMA s46A(7A) and Standing Orders s9.13

A meeting may discuss an item that is not on the agenda only if it is a minor matter relating to the general business of the meeting and the Chairperson explains at the beginning of the public part of the meeting that the item will be discussed. However, the meeting may not make a resolution, decision or recommendation about the item, except to refer it to a subsequent meeting for further discussion.

Announcements by the management

Confirmation of minutes

There are no minutes to confirm.

Agenda items

1 Safer Napier Programme Update5

Minor matters not on the agenda – discussion (if any)

Public Excluded

Nil

AGENDA ITEMS

1. SAFER NAPIER PROGRAMME UPDATE

<i>Type of Report:</i>	Information
<i>Legal Reference:</i>	N/A
<i>Document ID:</i>	1629478
<i>Reporting Officer/s & Unit:</i>	Rebecca Peterson, Senior Advisor Policy Anne Bradbury, Manager Community Strategies

1.1 Purpose of Report

To provide a summary of the year of the Safer Napier programme, including key highlights and benefits to Council and the Napier community.

Officer's Recommendation

The Napier People and Places Committee:

- a. **Receive** the Safer Napier Programme Update.

1.2 Background Summary

The Safe Community model is recognised by the World Health Organization as an effective approach to address community and individual safety, resilience and wellbeing. Napier City was first accredited as a Safe Community in 2010, reaccredited in 2016 and again in 2021.

The Safer Napier programme is led Napier City Council (NCC) and governed by a cross sector Safer Napier Strategic Group (SNSG) through a terms of reference. SNSG consists of representatives from 16 agencies and organisations who provide data, expertise, and contribute to the delivery of a broad range of projects, programmes and initiatives. Safer Napier is a collaborative model that has support from 59 signatory agencies who signed a Memorandum of Commitment at the 2021 reaccreditation. This enables Safer Napier to remain a member of the Pan Pacific Safe Communities Network which includes all Safe Communities in New Zealand.

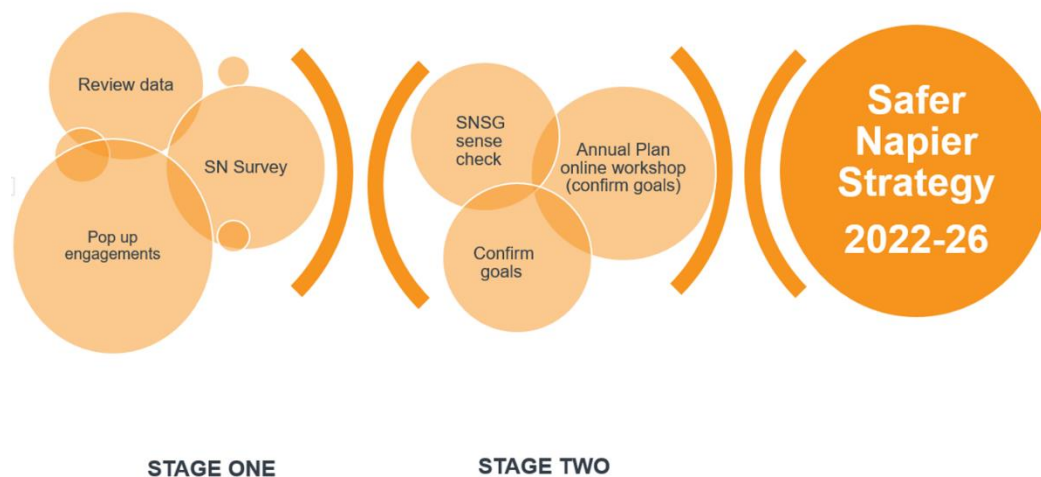
Safer Napier continues to focus on a broad range of safety related priorities including crime prevention, emergency preparedness, reducing social harms, preventing falls and injuries and strengthening community neighbourhoods. This report highlights key projects and initiatives that have occurred over the past year as well as the actions that have been implemented following reaccreditation.

Programme Planning

Following reaccreditation in December 2021, the Safer Communities Foundation New Zealand (SCFNZ) review team provided the following key recommendations to assist with continuous improvement in delivering the Safer Napier programme.

- Review the Safer Napier strategic goals and objectives
- Develop a one page outcomes framework including indicators of success
- Review the Terms of Reference to check they are still relevant and fit for purpose
- Review the Annual Report to see if it still meets the intended purpose
- Include communication targets to strengthen Safer Napier as a connector amongst partners
- Support engagement and focus on addressing inequities through a setting or population-based approach
- Maintain the momentum and commitment of partner agencies. Suggested actions include: balancing the commitment required from partners; understanding partner agency capacity; and providing lead agency or relevant coalition support.
- Strengthen relationships with other key industries i.e. Napier port, construction

A refreshed Safer Napier Strategy was launched during 2022 with three high level goals, focusing on people, place and community. Data and evidence contributed by Safer Napier partners along with the annual NCC Social Monitor Survey results helped shape the development of the revised strategy. Including a survey seeking feedback on the existing strategy and achievements over the past 5 years and engagement sessions with different community groups. The Safer Napier Strategic Group analysed the data confirming the vision, values, goals, priority communities and a revised structure. Emerging safety issues were also identified including homelessness and housing, food security, mental wellbeing, accessibility and intimidation.



The revised Safer Napier Strategy (**Attachment 1**) was adopted by SNSG in September 2022, following the launch of the new strategy a Terms of Reference and Membership review will be undertaken.

Napier City Council hosted the Safer Napier Annual planning workshop held at the Napier Sailing Club on September 13, where 64 Safer Napier partner agencies came together to assist with identifying and planning priority actions. Feedback was excellent with 98% reporting very satisfied or satisfied with the event. Participants were positive, engaged and provided new ideas for future planning including changes to the timing and frequency of key Safer Napier events. Below is a snapshot of comments.

"It was great to see things happening now that were raised in previous workshops"

"Great variety of presenters and facilitators"

"Workshops were well run, people encouraged to participate, good sharing of ideas, very worthwhile"

The latest Safer Napier Action Plan (**Attachment 2**) illustrates the range of projects and lead agencies involved in delivering the Safer Napier programme.

Programme delivery

Project highlights for the year include:

Marine Parade Water Safety Initiatives

A partnership between Napier City Council and Surf Life Saving New Zealand (SLSNZ) led to the installation of public rescue equipment along the dangerous 11km Marine Parade beach. Alongside the New Zealand trial led by the New Zealand Search and Rescue Consultative Committee with advisory from WaterSafe NZ Cross Sector Group and Drowning Prevention Auckland. Seven bright pink floatation devices (public rescue equipment or PRE) have been placed in key locations along the parade as a preventative measure to reduce the number of drownings including bystanders. The rescue buoy is for the public or first responders to perform a dry rescue, where the buoy is thrown to a distressed person in the water.

Napier City Council installed permanent signage along Marine Parade based on recent national SLSNZ signage guidelines. These signs provide beach users with information about the safety risks for Napier residents and visitors to Napier who are unfamiliar with the beach. Additional signage continues to be installed along the length of Napier coastline.

Both initiatives were supported with a water safety campaign, in addition information including a rescue buoy locator map and FAQs were updated on our council website.

Pacific Surf Life Saving patrol at Ahuriri beach

Surf lifeguards from Pacific Surf Life Saving Club have been patrolling at Ahuriri beach from November to March 2023. The move was informed by a SLSNZ Club Coastal Safety Report that confirmed a need for patrols at Ahuriri beach. It also found there is no need for patrols at Marine Parade due to extremely low numbers of beach users over the summer period. Pacific Surf Life Saving Club have a mobile tower based in front of the Harbour View Motel with flags located on Hardinge Road beach between Perfume Point and Hot Chick. To raise awareness of the patrolling change, council have delivered a communication campaign through multiple channels including radio, social media and print media.

Drive Nice Napier

FOLKL research agency were engaged by council to co-create an education and awareness campaign acknowledging positive driving behavior in Napier. The campaign focused on community generated content allowing people to nominate drivers through text or social media posts while the driver they nominated was entered into a prize draw. The brightness and positivity of the campaign attracted high levels of entries and engagement and exceeded targets by 167%.

Community Resilience Plans

In November, Hawke's Bay Civil Defence Emergency Management (HBCDEM) organised a workshop with the Westshore Residents and Development Association to discuss the

development of a Westshore Community Resilience Plan. Westshore is one of a group of coastal Napier communities that are the first to put together a resilience plan, with more local communities to come. Other partners who will remain involved, include Eastern Districts Police, Fire Emergency NZ, Westshore Surf Life Saving, Westshore Primary School, Hawke's Bay Airport and Napier Neighbourhood Support.

1.3 Issues

The Safe Communities Foundation New Zealand folded in 2022 and the establishment of a community-led network is being investigated. Representatives from Safe Communities around New Zealand have formed a Safe Communities transition working group and are working to identify a viable model of operation. Key consideration factors include embedding a Te Tiriti partnership approach to the network and ensuring an equity approach is central to the development of any network.

Social Monitor survey findings enable tracking of community safety perceptions over time along with data collected from our partner agencies.

1.4 Significance and Engagement

Feedback and input from a range of sources ensures transparent action planning and identification of priority activities and communities. Following the launch of the Safer Napier Strategy the Safer Napier Strategic Group worked together to refine and approve the current action plan taking us through until 2024.

1.5 Implications

Financial

Council provides ongoing operational funding for the Safer Napier Programme through the Long Term Plan 2021-2031, whilst project funding is sought through external channels wherever possible. It is anticipated the transition to a national community-led network may attract other funding opportunities for the wider programme moving forward.

Social & Policy

The Safer Napier programme is a community safety response that demonstrates collective action across a range of agencies and organisations under the one umbrella. The Ambassador of the Safer Napier programme is Napier's Mayor Wise which strengthens its profile and reputation, both locally and nationally.

Risk

Council is the primary funder for the delivery of Safer Napier and many of its flagship projects and events. Continued identification of funding through the Long Term Plan is essential for the programme's ongoing sustainability.

1.6 Options

The options available to Council are as follows:

- a. Note the Safer Napier update

1.7 Development of Preferred Option

N/A

1.8 Attachments

- 1 Safer Napier Strategy (Doc Id 1643376) [↓](#)
- 2 Safer Napier Action Plan (Doc Id 1643375) [↓](#)



Rautaki Haumarutanga o Ahuriri

Safer Napier Strategy 2022 - 2026

Safer Napier



Whakataukī

Mā tō ngākau atawhai, mā tō whakamanuhiri i te tangata e mohiotia ai koe he tangata.

We are measured by how well we look after our people.

Ko Ngā Ihirangi Contents

Whakataukī	1
Ko Ngā Ihirangi Contents	1
Whakamārama Introduction	2
Te Tiriti o Waitangi	3
Tō Tātou Rautaki Our Strategy	3
Ngā Herenga o te Manaaki Our Priority Communities	5
Te Anga Structure	6
Ngā Hononga Anō Strategic Links	7
Aromatawai Review	7
Appendix A	9
Appendix B	10

Whakamārama

Introduction

Napier City is proud to be an accredited Safe Community since 2010, reaccredited in 2016 and again in 2021. Community safety remains a key concern for Napier residents. The safe communities model provides a framework to address community safety in a collaborative way, recognising that safety is a universal concern and responsibility for all.

Safer Napier aims to make Napier a safe, connected and inclusive community by encouraging partnerships across agencies, organisations, community groups, businesses and the wider community who share this common goal.

Over the last ten years Safer Napier has made a positive difference in the community. Between 2011 and 2022, almost 150 unique initiatives were delivered under the Safer Napier umbrella. Napier City Council is the lead agency for the programme, which is driven by the Safer Napier Strategic Group (SNSG) and actively supported by 60 Safer Napier partner organisations.

This strategy has three high level goals, focusing on people, place and community. Under each goal the SNSG and partner organisations plan and work together on a range of projects including crime prevention, emergency preparedness, reducing social harms, preventing falls and injuries, and strengthening community neighbourhoods. Focus areas are set annually based on both community and partner organisations' feedback, evidence and statistical data.

Safer Aotearoa NZ¹ is the transitional national safe communities network that is likely to form the backbone organisation for managing accreditation, supporting best practice, coordinating and networking across the different safe communities. It is envisaged they will also maintain links with the Pan Pacific and International Safe Communities Networks.

¹ At the time of preparing this Strategy the final formation of the new national Safe Communities network was under discussion



Te Tiriti o Waitangi

Safer Napier has a commitment to honouring Te Tiriti o Waitangi through fostering strategic partnerships with mana whenua and prioritising equitable outcomes for Māori.

Tō Tātou Rautaki Our Strategy

Tirohanga whanui | Our vision

Working together with the community to create a safe, connected and inclusive Ahuriri.

Tō tātou mātāpono | Our values

Aroha ki te tangata - we treat each other with respect, kindness and generosity

Pūmau ki te honotanga - we proactively seek out partnerships to improve community safety

Kotahitanga ki te hāpori - collectively we work together for the benefit of the community

Aroha ki te hāpori - we care for our community

Tūturu ki te kaupapa - we are true to the commitment of community safety

Tō tātou whainga | Our goals

Ngā tangata | People - our people are safe and prepared

Ngā wāhi | Place - we have safe homes, roads and public spaces

Ngā hāpori | Community - we are a connected and inclusive community

Ahuriri tonu e | Our Napier

Our people feel safe

Everyone works together to improve community safety

We value and celebrate diversity

We advance whānau resilience and wellbeing



Tirohanga Whanui Our Vision		
Working together with the community to create a safe, connected and inclusive Ahuriri.		
Tō Tātou Whainga Our Goals		
 <p>Ngā tangata People</p> <p>Our people are safe and prepared</p> <ul style="list-style-type: none"> • social harms • family harm prevention • addiction related harm • crime prevention • suicide prevention • mental wellbeing • emergency preparedness • climate change 	 <p>Ngā wāhi Place</p> <p>We have safe homes, roads and public spaces</p> <ul style="list-style-type: none"> • safety in the home • fire safety • road and cycle safety • water safety • injury prevention 	 <p>Ngā hāpori Community</p> <p>We are a connected and inclusive community</p> <ul style="list-style-type: none"> • strengthening neighbourhoods • community events • youth and whānau development • social inclusion • cultural diversity • volunteering
Sustainable Development Goals		
<p>Good Health and Well-Being</p> <p>End preventable deaths of children under-five</p> <p>Prevent substance abuse and harmful use of alcohol</p> <p>Halve deaths and injuries from road traffic accidents</p> <p>Gender Equality</p> <p>Eliminate all forms of violence against women and girls</p>	<p>Reduced Inequalities</p> <p>Promote the inclusion of all, irrespective of age, sex, disability, race, ethnicity, status or religion</p> <p>Ensure equal opportunity and reduce inequalities</p>	<p>Sustainable Cities and Communities</p> <p>Access to adequate, safe and affordable housing and services</p> <p>Safe transport improving road safety and public transport</p> <p>Reduce the number of water-related deaths</p> <p>Climate Action</p> <p>Strengthen resilience to climate change and natural disasters</p> <p>Improve awareness of climate change mitigation, adaptation and impact reduction</p> <p>Peace, Justice and Strong Institutions</p> <p>Reduce all forms of violence and related death rates</p> <p>End all forms of violence against children</p>

Ngā Herenga o te Manaaki

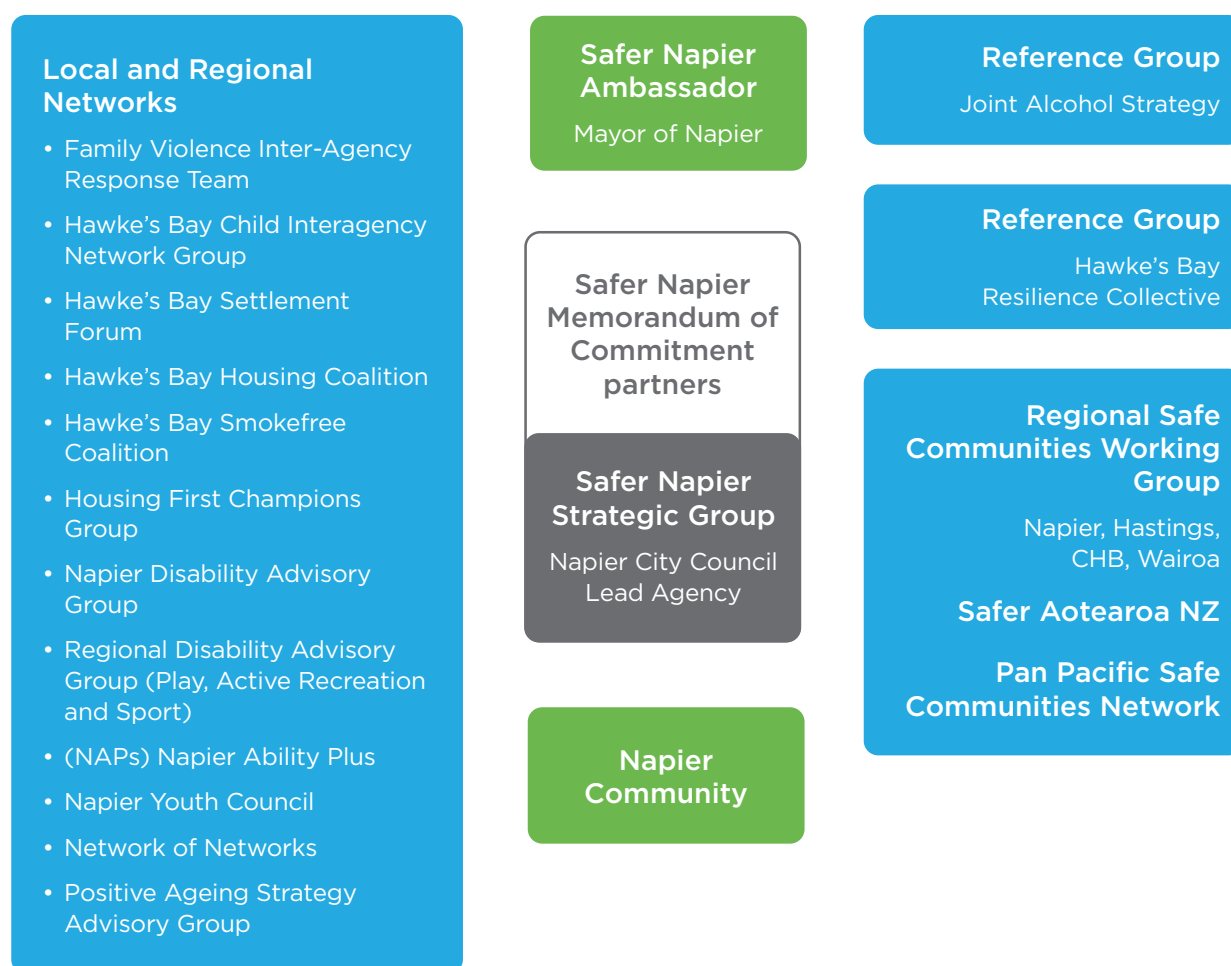
Our Priority Communities



Te Anga Structure

Safer Napier is made up of a diverse group of agencies, organisations and community groups all working together to improve community safety. Sixty groups signed the Safer Napier Memorandum of Commitment in 2021 (Appendix A).

Napier City Council is the lead agency and the programme is governed by the Safer Napier Strategic Group (SNSG) through a Terms of Reference. This cross sector group consists of government agencies and key organisations supported by local and regional networks, reference groups, input from the community plus other safe communities nationally and internationally.



² Members as at August 2022: Accident Compensation Corporation, Hawke's Bay Civil Defence Emergency Management Group, Te Whatu Ora - Te Matau a Māui Hawke's Bay, Fire and Emergency NZ, Kāinga Ora- Homes and Communities, Ministry of Social Development, Napier City Council, Napier City Business Inc, NZ Automobile Association, NZ Police, NZ Red Cross, RoadSafe Hawke's Bay, Roopu a Iwi Trust, Te Kupenga Hauora-Ahuriri, Te Puni Kōkiri, Te Rangihaeata Oranga Trust.

Ngā Hononga Anō

Strategic Links

International Safe Communities

Safer Napier is an accredited International Safe Community and part of an international network of designated safe communities. This includes Pan Pacific Safe Communities Network (New Zealand, Australia, United States of America and Canada) and the International Safe Communities Network.

Local, Regional and National Links

Safer Aotearoa NZ is the transitional national safe communities network that is likely to form the backbone organisation across the different safe communities in New Zealand.

This strategy complements a number of local, regional and national strategies, plans and policies that contribute to community safety. This strategy also complements local agency knowledge that our Safer Napier partners bring to the table (Appendix B).

Aromatawai

Review

This strategy will be reviewed every five years to align with Safe Communities re-accreditation timeframes. Action plans will be reassessed each year to ensure they remain relevant and allow us to respond to new or emerging safety issues.





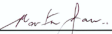


Appendix A:

Safer Napier Memorandum of Commitment 1 December 2021

- We agree to be part of Safer Napier – an International Safe Community, as a Coalition member.
- As a Coalition member, we agree to work collaboratively to improve community safety in Napier.
- We recognise that the whole community has a role to play in keeping our city safe, including in crime prevention, injury prevention, road safety, community resilience, and addiction-related harm.
- This Memorandum of Commitment will remain in place until Safer Napier seeks reaccreditation.
- This Memorandum of Commitment is a mutual agreement to work together for the benefit of our community. It is not a legal document and Coalition members may terminate their membership in writing at any time.
- We, the undersigned, agree to the purpose of this Memorandum of Commitment for Safer Napier.

Safer Napier



 Kirsten Wise Mayor Napier City Council	 Julie Hart Business Manager Family Violence Intervention & Prevention Charitable Trust	 Chris Meynell Leader Matariki Kāhui Ako (Community of Learning)	 Mark Cleary Secretary Napier Pilot City Trust	 Brendon Hutchinson District Operations Manager St Johns Central Region
 Rebecca Peterson Safer Napier Strategic Group Chairperson Napier City Council	 Nigel Hall Community Risk Manager Fire and Emergency New Zealand	 Glenn France Lead Principal Matarauhou Napier City Kāhui Ako (Community of Learning)	 Howard Bott Chairman and Trustee Napier Safety Trust	 Charlie Cordwell Regional Manager Surf Lifesaving New Zealand
 Morag Hill Manager Age Concern Napier	 Bruce Carnegie President Grey Power Napier	 Samantha Vernon Principal Advisor to the Director of Education Ministry of Education	 Inspector Martin James Area Prevention Manager New Zealand Police	 Monica Watson Chairperson Takitimu District Māori Wardens Trust
 Roxann Grey Administrator Ahuriri Māori Wardens Trust	 Lily Foulds Community Engagement Hawke's Bay Civil Defence Emergency Management Group	 Calvin Robinson Community Liaison Advisor Ministry of Social Development	 Angela Mentzer Community Activator New Zealand Red Cross	 Tessa Robin Operations Manager Te Kupenga Hauora Ahuriri
 Maxine Boag Spokesperson Alcohol Action New Zealand, Hawke's Bay Branch	 Tracy Ashworth Team Leader Health Improvement and Equity Hawke's Bay District Health Board	 Sukheep Singh President Multicultural Association Hawke's Bay Inc	 Chad Tareha Chairman Ngāti Pārau Hapū Trust	 Jamie Mitchell Kaitohutohu - Advisor Te Puni Kōkiri
 Sarah Mulcahy General Manager Programme Design and Evaluation Anglican Care Waiapu	 Captain Martin Moore Harbourmaster Hawke's Bay Regional Council	 Pip Thompson General Manager Napier City Business Inc	 Amy Orr Community Services Coordinator Plunket Hawke's Bay	 Vicki Berkahn General Manager Te Rangihāta Oranga Trust - Gambling Recovery Service (Hawke's Bay)
 Colin Goble Councillor Automobile Association Hawke's Bay and Gisborne	 Wi Ormsby Māori Health Advisor Health Hawke's Bay - Te Oranga o Te Matau-a-Māui	 Tiffany Mackenzie Youth Council Facilitator Napier City Council Youth Council	 Mary Willis Social Services General Manager Presbyterian Support East Coast (Enliven)	 Maureen Maa CEO Te Roopu A Iwi Trust
 Desiree Cornelissen Manager Brain Injury Hawke's Bay	 Andrew Cairns Hawke's Bay Area Manager Kāinga Ora - Homes and Communities	 Ian Wilton Chairman Napier Community Patrol	 Ruth Spicer Coordinator Prisoner Rehabilitation Society	 Meg Sillay Chair The Samaritans
 Dave Halliday Chairperson Citizens Advice Bureau Napier	 Charles Faletutulu Strategic Business Manager Kings House	 Jude Henderson Chair Napier Disability Advisory Group	 Maureen Maa Trustee Pukemokimoki Marae Trust	 Mary Mohawk Trustee Tū Tangata Maraenui Trust
 Sue Robson General Manager Disability Resource Centre Hawke's Bay Trust	 Stacy Apiata Operations Manager Ko Wai Tōu Ingoa Hauora	 Kerry Henderson CEO Napier Family Centre	 Katie Nimon Transport Manager Road Safe Hawke's Bay	 Leanne Collins Manager Volunteering Hawke's Bay
 Stewart Eadie General Manager DOVE Hawke's Bay	 Kara Duncan-Hewitt Consultant and Trainer Liberty Training New Zealand	 Rev Lynne Frith Methodist Minister Napier Inner City Covenant Churches	 Captain Sammy Millar Corps Officer Salvation Army	 Lyndal Johansson Education Advisor, Education and Marketing Waka Kotahi New Zealand Transport Agency
 Mark Wilson Executive Pastor Engage Church	 Adrienne Taputoro Chairperson Maraenui and Districts Māori Committee	 Adrienne Galvin Coordinator Napier Neighbourhood Support	 Sue Smith General Manager Sport Hawke's Bay	 Shirley Lammam General Manager What Ever It Takes Trust

Appendix B: National, Regional and Local Strategies, Policies and Plans

National

- ACC Statement of Intent 2021-25
- Alcohol Action Plan NZ Police 2018
- Aotearoa Homelessness Action Plan. Ministry of Housing and Urban Development. 2020-23
- Child and Youth Wellbeing Strategy 2019
- Every Life Matters/He Tapu te Oranga o ia Tangata: Suicide Prevention Strategy 2019 -29
- He Takunetanga Rautaki/Strategic Intentions Te Puni Kokiri 2020-24
- Ministry of Education Statement of Intent 2021-26
- Ministry of Social Development Statement of Intent 2021-25
- National Disaster Resilience Strategy Ministry for Civil Defence 2019
- National Drug Policy 2015-20
- New Zealand Health Strategy. Ministry of Health 2016
- Prevention First: National Operating Model NZ Police 2017
- Risk Reduction Strategy Fire Emergency NZ 2019-29
- Road to Zero. New Zealand's Road Safety Strategy Waka Kotahi 2020-30
- Safe Roads Control Strategy. NZ Police 2021
- Strategy to Prevent and Minimise Gambling Harm 2022/23 to 2024/25
- Te Aorerekura / The enduring Spirit of Affection The National Strategy to Eliminate Family Violence and Sexual Violence 2021

Regional

- Fire Emergency NZ Hawke's Bay Risk Reduction Workplan 2022-24
- Hawke's Bay Road Safety Action Plan
- Hawke's Bay Emergency Management Group Plan 2014-19
- Hastings District and Napier City Councils Smokefree Policy 2022
- Health Hawke's Bay Strategic Plan - Ka Hikitia 2021
- Joint Alcohol Strategy Hastings District and Napier City Council 2017-21
- Matariki Hawke's Bay Regional Development Strategy Action Plan 2019
- Te Rangihaeata Oranga Trust Organisational Strategy 2021-23

Local

- Napier City Council Long Term Plan 2021-31
- Napier Disability Strategy 2019-23
- Napier Youth Strategy 2018-2023
- Napier's Positive Ageing Strategy 2020-24

Safer Napier





Safer Napier Action Plan 2022-2024

October 2022 - June 2024

This action plan presents actions for implementing the Safer Napier Strategy.

This plan includes new and existing initiatives that will support a Safer Napier, including a number of safety projects, programmes and initiatives that are already in progress.

Actions included in this plan were identified from:

- Feedback received from Safer Napier Signatories and community agencies at our Annual Workshop held in September 2022
- Ideas and information gathered from the community and signatories via survey, pop-ups and discussions as part of pre-engagement activities during the Safer Napier Strategy development
- Safer Napier Strategic group discussions with lead agencies
- And informed by data including Napier City Council's annual social monitor and 2021 safety survey data

The actions may not be evenly distributed across the priority areas however, they reflect either a community safety priority or where agencies and partners were identified and willing to take ownership and progress the actions.

Goal One: Ngā tangata / People

Our people are safe and prepared

Focus Areas	Priority communities / environments
• Social Harms	People and whānau affected by social harms
• Family harm prevention	Whānau/families, ethnic and faith based communities
• Crime prevention	Homes, retailers
• Addiction related harm (including gambling, alcohol, smoking, vaping and other drugs)	Young people under 25, Māori, people and whānau affected by addiction, retailers, CBD, parks and reserves
• Suicide prevention	Men, young people, LGBTQI+
• Mental wellbeing	Young people, men, older people living alone, LGBTQI+
• Emergency preparedness	Older people, Māori, Pasifika, low socio-economic, people with disabilities, Napier coastlines, Napier hill
• Climate change	Coastal areas, Napier residents, CBD

Our actions

	Lead/s
Support the growth of Napier Neighbourhood Support	NCC/ NNHS
Develop community resilience plans in priority locations	HBCDEM
Develop emergency plans with schools	HBCDEM / MOE
Emergency preparedness activities with surf lifesaving clubs	HBCDEM / SLNZ
Provide evacuation information for families with disabilities	HBCDEM / CCS
Localise national mental health and well-being campaigns	Te Whatu Ora / SNSG
Promote local mental health services and campaigns through social media and local networks	Te Whatu Ora
Implementation of the Smokefree and Vapefree Policy	HDC/NCC
Develop and deliver a vaping education toolkit for schools	Te Whatu Ora

Increase knowledge and advocate for national alcohol legislation change, including the Sale and Supply of Alcohol (Harm Minimisation) Amendment Bill	Joint Alcohol Strategy
Promote Gambling Harm Awareness Week and removal of pokies from high deprivation areas	Te Rangihaeata Oranga Trust
Partner projects with Āwhina Tangata – Napier City Assist and CCTV network	NCBI / NCC / NNHS
Encourage people to use more sustainable transport e.g. walking and cycling	Waka Kotahi / NCC
<i>PASAG: Emergency preparedness planning amongst older people and retirement villages</i>	<i>HBCDEM / NCC</i>
<i>PASAG: Promote Napier Neighbourhood Support to older people with the view to increasing membership and connections to existing groups</i>	<i>NNHS</i>
Continue to support and promote the following programmes and initiatives;	
<ul style="list-style-type: none"> Ngāti Kahungunu Te Kura (whānau harm prevention) including quarterly speed dating networking events 	Ngāti Kahungunu Iwi / Police
<ul style="list-style-type: none"> Tuai Kōpu - Pēpi packs, safe sleeping 	Te Whatu Ora
<ul style="list-style-type: none"> Kia Piki Te Ora 	TKHA
<ul style="list-style-type: none"> Outreach service, Housing First 	WITT
<ul style="list-style-type: none"> Continue to install tsunami information boards, evacuation routes 	HBCDEM / NCC
<ul style="list-style-type: none"> Hill Hosts phase two - Hill preparedness 	HBCDEM / NCC
<ul style="list-style-type: none"> Men's support group 	Prisoner Rehabilitation Society
<ul style="list-style-type: none"> Grow Tihei Rangatahi service within the community 	TKHA
<ul style="list-style-type: none"> Family Violence Prevention 	Dove Hawke's Bay
<ul style="list-style-type: none"> White Ribbon including increased leadership via ambassadors programme 	SNSG / NCC
<ul style="list-style-type: none"> Te Haa Matea Hawke's Bay stop smoking services 	Choices / TKHA / Te Whatu Ora
<ul style="list-style-type: none"> Te Vaka Māia (Cactus Programme) 	WCC / Police / TKHA
<ul style="list-style-type: none"> Alcohol free events and zones 	SNSG

Our partners:

Age Concern Napier
Choices - Kahungunu
DOVE Hawke's Bay
Eastern Districts Police
HB Civil Defence Emergency Management
Hasting's District Council
Health Hawke's Bay
Joint Alcohol Strategy
Ministry of Education
Napier City Business

Napier City Council
Napier Neighbourhood Support
Ngāti Kahungunu Iwi -Te Kura
Prisoner Rehabilitation Society
Surf Lifesaving NZ
Te Whatu Ora
Te Kupenga Hauora Ahuriri
Te Rangihaeata Oranga Trust
Te Puni Kōkiri
William Colenso College

How will we measure success?

1. Percentage of people who feel safe
2. Rate of victimisations for assault in public spaces
3. Rate of victimisations for assault by family member
4. Gaming machine proceeds
5. Number of alcohol related fatal and serious crashes
6. Percentage of households with a household emergency plan

Goal Two: Ngā wāhi / Place

We have safe homes, roads and public spaces

Focus areas	Priority communities / environments
<ul style="list-style-type: none"> Safety in the home (including falls) 	Children, older people, Māori, Pasifika, low socio-economic
<ul style="list-style-type: none"> Road and cycle safety 	Children, young drivers, older people, unlicensed drivers, car restraints, cyclists, SH5, intersections, high crash areas
<ul style="list-style-type: none"> Water safety 	Children, Napier residents and visitors, Marine Parade, coastlines, rivers
<ul style="list-style-type: none"> Fire safety 	Children, older people, whānau living in rental accommodation, Māori, Pasifika
<ul style="list-style-type: none"> Injury prevention 	Older persons

Our actions

	Lead
Streets for People - Carlyle Street safety improvements	Waka Kotahi / NCC
Open Home initiative, Home Fire Safety Checks, FireWise School programme, protecting homes against wildfire	FENZ
Refresh and expand 'Safe as Houses' project in priority locations and focus on safety of older people including residents of NCC's Senior Housing	NCC / Police / FENZ / HBCDEM / NNHS / TKHA
Home visits for kaumātua and older people at home	Enliven / Age Concern
Accessibility support in homes	CCS Disability Action
Home health and safety checks including smoke alarms, fencing and fencing for children	Kāinga ora
Provide and promote exercise programmes for older adults -Kiwi Seniors, Sit and Be Fit, Tai Chi *	Sport HB, Grey Power, Age concern
Install permanent beach safety signage along Napier coastlines	NCC / SLSNZ
Support Pacific Surf Life Saving Club transition	NCC / SLSNZ
Advocate for safer, more inclusive pathways	NCC / Waka Kotahi

<i>PASAG: Promote awareness of how to use courtesy crossings and pedestrian crossings</i>	NCC
<i>PASAG: Improve safety and accessibility of steps and pathways on Mataruahou for better emergency preparedness</i>	NCC / HBCDEM
Continue to support the following initiatives and programmes	
• Youth Road Safety Expo, Checkpoints and Corrections Service Road Safety Education Days	Roadsafe HB
• Hawke's Bay Regional Road Safety Strategy	HBRC
• Network safety improvements at trouble spots and school zones	NCC
• Rotary Youth Driver Awareness (RYDA) workshops in schools	Police
• Motorcycle riding safety initiatives	ACC
• Education and Beach Patrols	SLSNZ
• Nymbi falls prevention app	ACC
• Community Strength and Balance programme	Enliven HB / ACC/ Age Concern
• Promote and deliver Staying Safe – refresher course for older drivers	Waka Kotahi / Age Concern

Our partners:

Accident Compensation Corporation
 Age Concern
 Automobile Association
 CCS Disability Action
 Eastern Districts Police
 Enliven Hawke's Bay
 Fire and Emergency NZ
 Grey Power
 Hawke's Bay Regional Council
 HB Civil Defence Emergency Management

Kāinga Ora
 Napier City Council
 Positive Ageing Strategy Advisory Group
 Roadsafe Hawke's Bay
 Sport Hawke's Bay
 Surf Life Saving NZ
 Te Kupenga Hauora Ahuriri
 Te Whatu Ora
 Waka Kotahi – NZ Transport Agency

How will we measure success?

1. Rate of moderate to serious injuries
2. Rate of public hospital injury discharges
3. Number of fatal and serious road crashes
4. Number of cycle and pedestrian crashes

Goal Three: Ngā hāpori / Community

We are a connected and inclusive community

Focus areas

	Target groups / environments
<ul style="list-style-type: none"> Strengthening neighbourhoods 	Whole community, older people, socially isolated, resident associations, Māori wardens
<ul style="list-style-type: none"> Community Events 	Rangatahi, Pasifika, migrant communities
<ul style="list-style-type: none"> Youth and whānau development 	Young people not in education or employment (NEET), low income whānau, vulnerable young people
<ul style="list-style-type: none"> Social inclusion 	Older persons, tangata whaiora, beneficiaries, people with disabilities, LGBTQI+
<ul style="list-style-type: none"> Cultural diversity 	Newcomers, migrants, international students

Our actions

	Lead
Extend 'Look out for your neighbour' campaign including additional promotional opportunities	NCC / NNHS / Age Concern
Identify partnership projects combining residents associations and mana whenua e.g. planting days, community clean up events	NCC / NNHS / HBRC
Support Matariki annual event	Ngāti Kahungunu Iwi / NCC
Develop a calendar of safety related community events including neighbourhood support campaigns	SNSG / NCC / NNHS
Implement Westshore Community Connection project	Sport HB / NCC / SLSNZ / Emerge Aotearoa / Westshore School
Work with Napier Youth Council to support safety initiatives for young people	SNSG / NCC
Deliver a regional DiverCity multicultural event	HBSF

Play Streets	Waka Kotahi / Sport HB / NCC
Targeted events for rangatahi	SNSG
Intergenerational learning projects and events e.g. Marae based cooking, weaving, DIY	Age Concern / PASAG
Implement recommendations from Napier Homelessness Report	NCC / WITT
Conduct a stocktake and stakeholder mapping in preparation for the development of Napier's 'welcoming plan'	NCC / Te Waka Rangapū
Continue to support the following initiatives and programmes	
• Shake Out	HBCDEM
• Good and Ready	Red Cross
• Papakainga housing aspirations for whānau Māori in Napier	TPK / Kāinga Ora
• Child healthy housing programme	Te Whatu Ora, HBRC
• Support Iron Māori Kaumātua event for Napier	TPK / TKHA / NCC
• International day for older persons	PASAG

Our Partners

Accident Compensation Corporation
 Creative Arts Napier
 Eastern Districts Police
 Emerge Aotearoa
 Grey Power
 Hawke's Bay Regional Council
 HB Civil Defence Emergency Management
 Hawke's Bay Settlement Forum
 Kāinga Ora
 Ministry of Social Development
 Napier City Business Inc

Napier Youth Council
 Napier City Council
 Napier Neighbourhood Support
 Ngāti Kahungunu Iwi- Te Kura
 Road Safety HB
 Sport Hawke's Bay
 Te Puni Kōkiri
 Te Waka Rangapū
 Waka Kotahi - NZ Transport Agency
 Westshore School

How will we measure success?

1. Number of households that are members of a Neighbourhood Support Group
2. Percentage of people who report positive social connections
3. Percentage of people who experience prejudice or intolerance

Abbreviations

Automobile Association	AA
Accident Compensation Corporation	ACC
Awhina Tangata – Napier Assist	Āwhina Tangata
Citizens Advice Bureau	CAB
DOVE Hawke's Bay	DOVE HB
Emerge Aotearoa	EMERGE
Fire and Emergency New Zealand	FENZ
Hawke's Bay Civil Defence Emergency Management Group	HBCDEM
Hawke's Bay Regional Council	HBRC
Hawke's Bay Settlement Forum	HBSF
Health Hawke's Bay - Te Oranga Hawke's Bay	HHB
Ka Hao Te Rangitahi Trust	KHTR
Kāinga Ora – Homes and Communities	Kāinga Ora
Ministry of Social Development	MSD
Ministry of Education	MoE
Napier City Council	NCC
Napier Youth Council - Te Kaunihera Rangatahi o Ahuriri	Napier Youth Council
Napier City Business Inc	NCBI
Napier Community Patrol	NCP
Napier Neighbourhood Support	NNHS
Napier Safety Trust	NST
New Zealand Police	Police
New Zealand Red Cross	Red Cross
New Zealand Transport Agency - Waka Kotahi	NZTA
Ngāti Kahungunu Iwi	NKII
RoadSafe Hawke's Bay	RoadSafe HB
Roopu A Iwi Trust	RAIT
Safer Napier Strategic Group	SNSG

Sport Hawke's Bay
Surf Life Saving NZ
Te Kupenga Hauora - Ahuriri
Te Puni Kōkiri
Te Rangihaeata Oranga Trust
Te Waka Rangapū (NCC)
Te Whatu Ora - Hawke's Bay
Waka Kotahi - NZ Transport Agency
Whatever it Takes Trust
William Colenso College

Sport HB
SLSNZ
TKHA
TPK
TRHOR
Te Waka Rangapū
Te Whatu Ora
Waka Kotahi
WITT
WCC