



AHURIRI REGIONAL PARK JOINT COMMITTEE

Open Minutes Attachments

Meeting Date: Friday 5 May 2023

Time: 9.36am – 11.05am (*Open*)
11.06am – 11.11am (*Public Excluded*)

Venue: Large Exhibition Hall
War Memorial Centre
Marine Parade
Napier

TABLE OF CONTENTS

Item 1	Engagement of Project Manager
Attachmen 1	Project Manager Role presentation (<i>Doc Id 1655405</i>)2



Ahuriri Regional Park Project Manager Role

5 May 2023

Item 1 Attachment 1



Today

1. Introductions - Skills and Experience
2. Understanding of the Project
3. Understanding of the Cultural Context
4. Initial Observations
5. The Project Manager Role
6. Our Team
7. Our Approach – Initial Thoughts
8. Questions



45 minutes





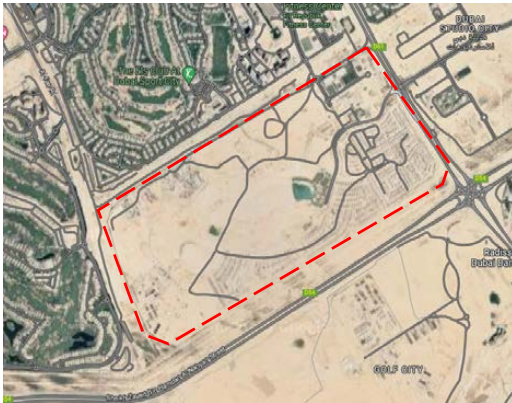
Skills and Experience – Cam Drury

- Principal Planner, Director, Strategy
 - Bachelor Resource and Environmental Planning, Massey University
 - Expert planning and project delivery:
 - Mission Hills
 - Pettigrew Green Arena
 - Kaweka Hospital
 - NCC 3 Waters Infrastructure Panel
 - Ahuriri context:
 - ❑ Wider Ahuriri Issues and Options 2013
 - ❑ Westshore Tidal Gates / Lagoon Farm
 - ❑ Plan Change 11
 - ❑ Pandora Zone Review
 - ❑ Various West Quay developments
- Identifying issues and options
 - Developing project strategies
 - Co-ordinating inputs
 - Engaging/consulting
 - Solving problems
 - Delivering outcomes



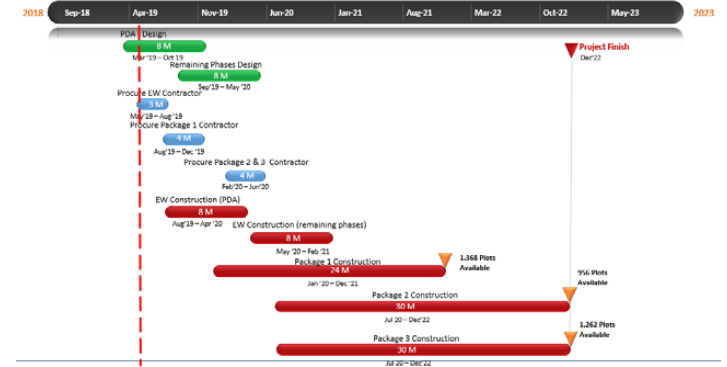
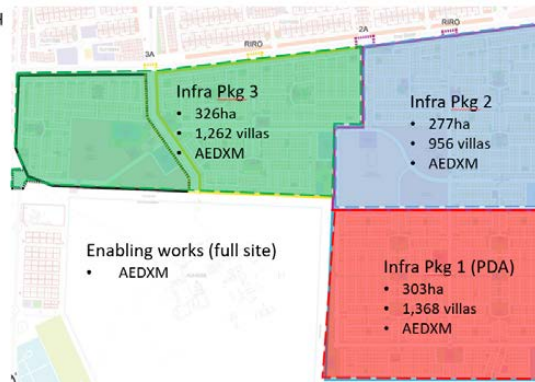


Skills & Experience - Rima Kaio



BANIYAS NORTH OVERALL

- 906ha
- 3,586 villas
- AEDXM





Understanding of the Project

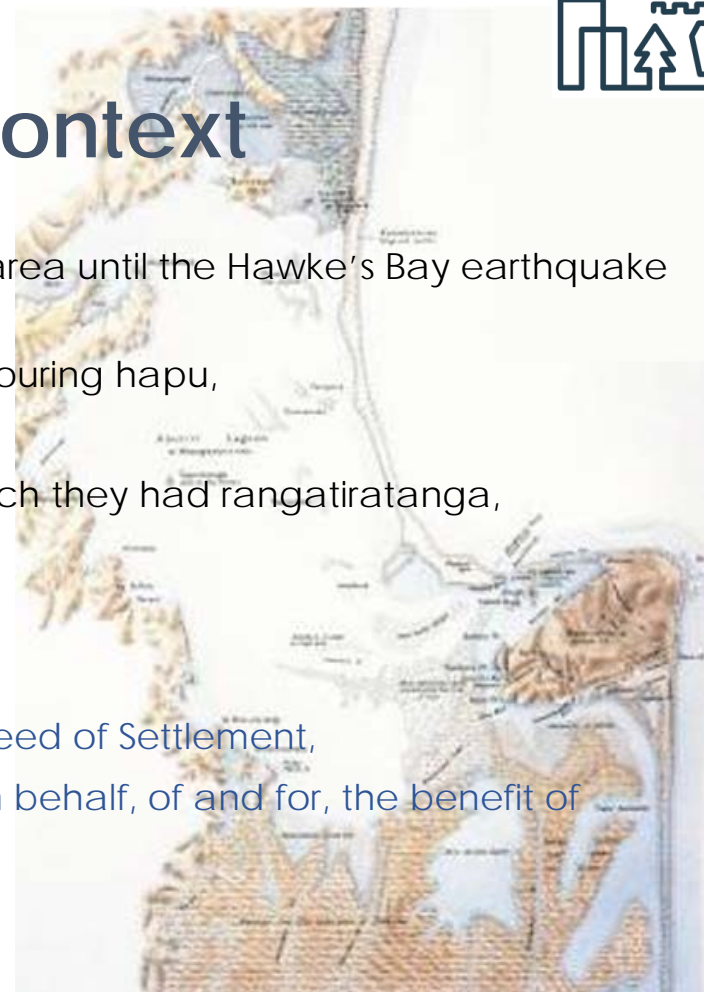
- A platform for climate resilience and city sustainability,
- Key outcomes:
 - Flood risk mitigation,
 - Stormwater quality improvements,
 - Biodiversity and estuarine habitat restoration.
- A Joint Committee to provide a vehicle for co-governance,
- Will support the broader Te Muriwai o Te Whanga Plan,
- Touches on many aspects of NCC's 6 City Vision principles,
- Opportunities are broad and optimal outcomes are of the highest priority,
- A key milestone is the preparation of a Master Plan,
- Need to maintain momentum.





Understanding of the Cultural Context

- Te Whanganui-a-Orotu - estuarine lagoon occupying a massive area until the Hawke's Bay earthquake in 1931,
- A vitally important fishing and resource gathering area for neighbouring hapu,
- Of great significance to, and central to the identity of hapu,
- Hapu always considered Te Whanganui-a-Orotu taonga over which they had rangatiratanga,
- Ongoing claims and legal processes,
- Te Whanganui-a-Orotu (Wai 550) claim - settled in 2022,
- Mana Ahuriri:
 - A private trust set up to receive the proceeds of the Ahuriri Deed of Settlement,
 - To receive, manage, hold and administer the Trust's assets on behalf, of and for, the benefit of present and future beneficiaries.





Initial Observations

- Opportunities are broad and there is potential to deliver outcomes across a number of areas
- Multiple stakeholders,
- This is a legacy project,
- Big for Napier,
- Area is steeped in history, opportunity to preserve and uplift the story,
- Te Ao Maori is to be embedded into the daily delivery of the project,
- Opportunity to showcase and demonstrate the success of co-governance.





The Project Manager Role

- Profile of the role is broad and touches on different areas of expertise/skill sets, including:
 - Project Management
 - Strategic Planning
 - Program management
- Also involves a 'chairing' component and a 'project driver/director' aspect,
- The importance and significance of the project warrants a high level of dedication,
- Specialist skills are needed to deliver on the role,
- Requires a 'Team' approach.



