



ORDINARY MEETING OF COUNCIL

Open Minutes Attachments

Meeting Date: Thursday 8 June 2023

Time: 9.30am – 12.26pm

Venue: Large Exhibition Hall
War Memorial Centre
Marine Parade
Napier

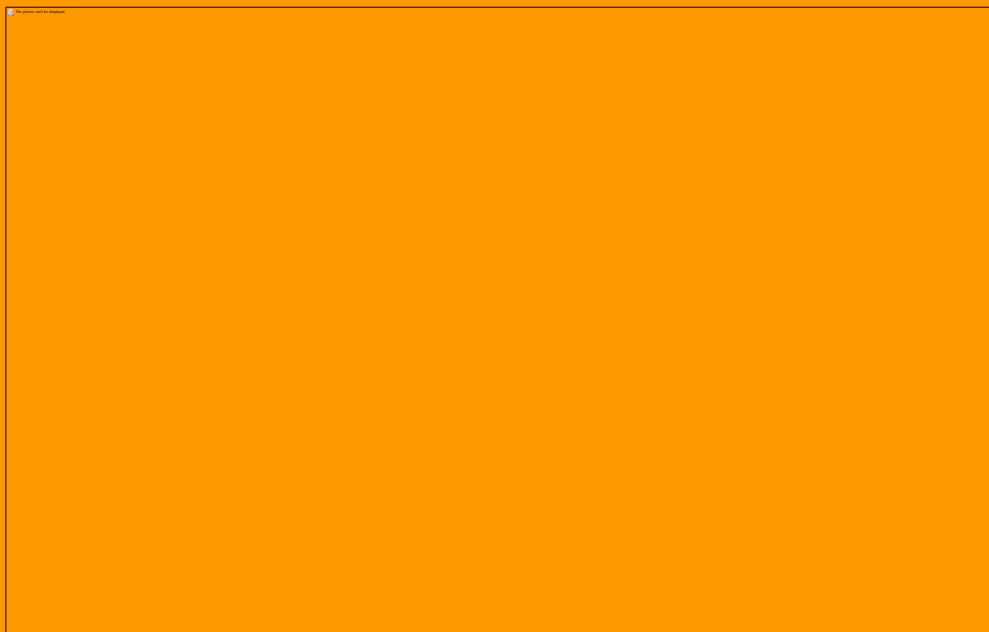
TABLE OF CONTENTS

Attachment 1	The Meke Meter presentation (Doc Id 1666281)2 <i>Some images were linked to other programmes and unfortunately could not be displayed.</i>
Attachment 2	Art Deco Trust presentation (Doc Id 1666111)22
Attachment 3	Resource Management Presentation (Doc Id 1666243)33
Attachment 4	3Waters Reform presentation (Doc Id 1666255)40

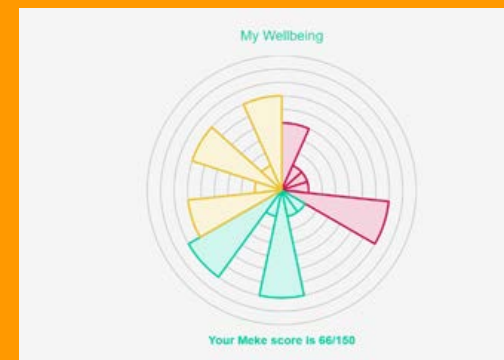
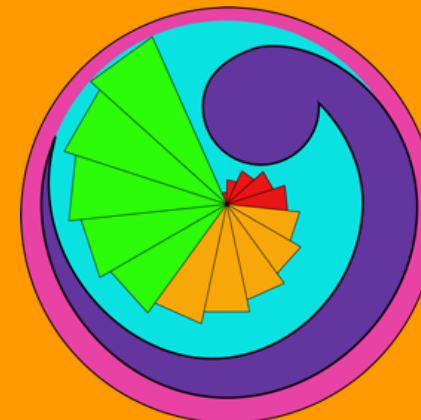
The MEKE Initiative

“Positive wellbeing by promoting the unity in community”

This project was funded by a Health Research Council of New Zealand
2020 COVID-19 Equity Response Community Action Grant



Background



The Research Team

- 2020 HRC Research Grant.
- Understand the impacts of this initiative in Maraenui.
- Building research capability and capacity through Masters students.

Rachel Forrest, PhD

Fiona Cram, PhD

Maria Pearson, MPhEd

Dana Armstrong, MHSc

Levi Armstrong, MHSc



PATU - provider of community-specific healthy lifestyle intervention programmes (photo: Maraenui Patu Whānau)

The Meke Meter - an indigenous quality of life self-reflection app

The Domytis - a mobile wellbeing pod for use as a gym and community hub

The M.E.K.E Initiative

Motivate *Engage *Konnect *Evolve
Positive wellbeing by promoting the *unity* in community

TARGETED COMMUNITY = Maraenui

Research Question: *What is the community's perceived impact of the M.E.K.E initiative on people's wellbeing in Maraenui?*

Kōrero with residents that engaged with the Maraenui M.E.K.E Initiative

Compare what is being said to the Domytis utilisation data and Meke Meter scores for Maraenui residents (engaged and not engaged)

Kōrero with community leaders (Kaumatua/Kuia), groups and other community stakeholders

Kōrero with residents who did not engage with the Maraenui M.E.K.E Initiative

Kōrero with non-residents who have connections to the community (e.g. whānau, friends)

Data Collection

The following open -ended questions guided the semi -structured interviews (group and individual):

- What is your connection to the Maraenui Community?
- With what ethnic group(s) do you identify?
- What does health and wellbeing (hauora) mean to you?
- How has/did the pandemic impacted on your health and wellbeing (social and family, physical, mental, spiritual)?
- What impact do you think the M.E.K.E. Initiative has had on your wellbeing?
- What do you think the strengths of the M.E.K.E. initiative are?
- How do you think the M.E.K.E. Initiative could be improved?
- Is there anything else related to the M.E.K.E. Initiative you would like to share?

A total of 17 one -on-one individual interviews (in person and email) and nine focus group interviews were conducted.

Data Collection

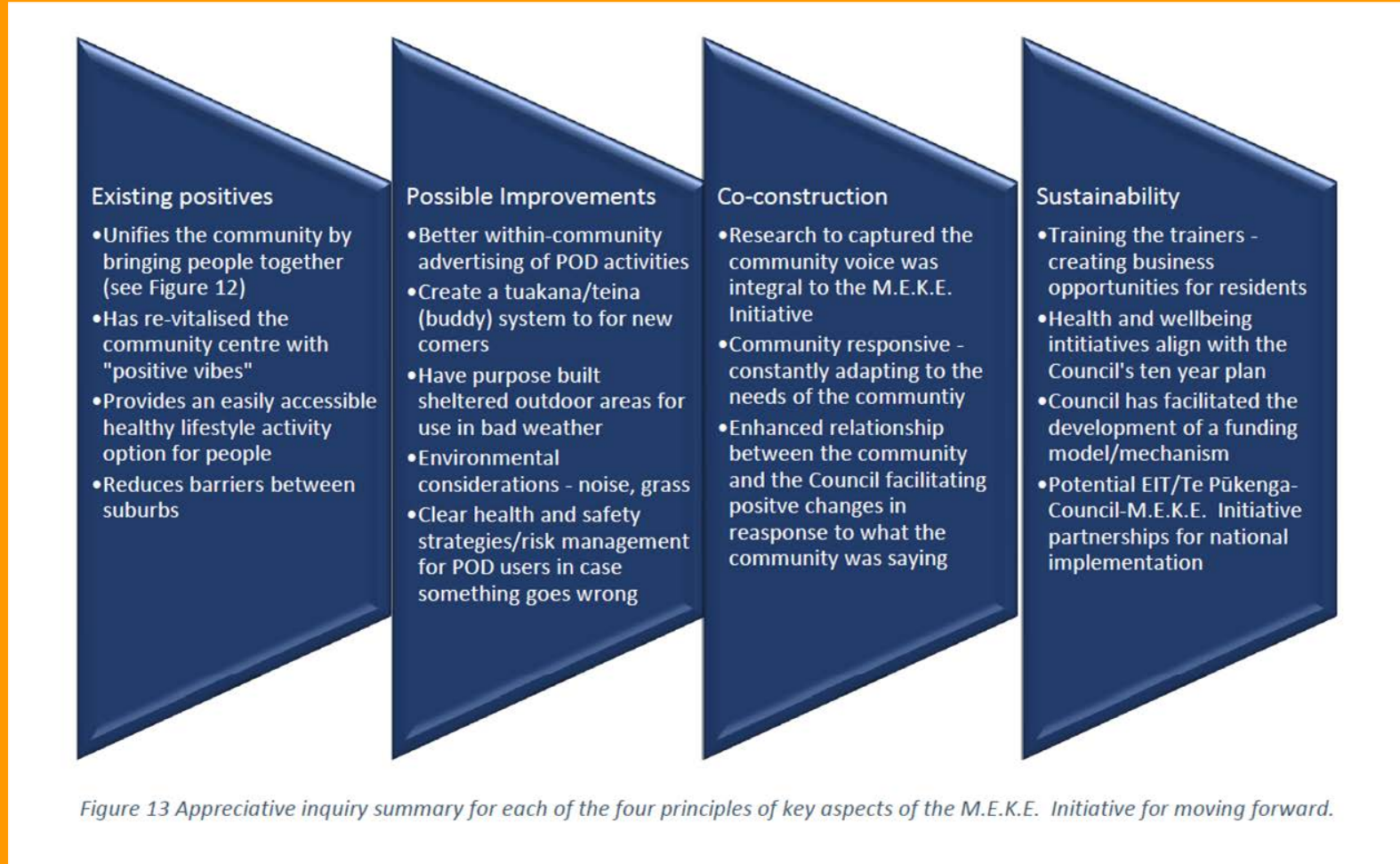
A total of 54 handwritten feedback forms

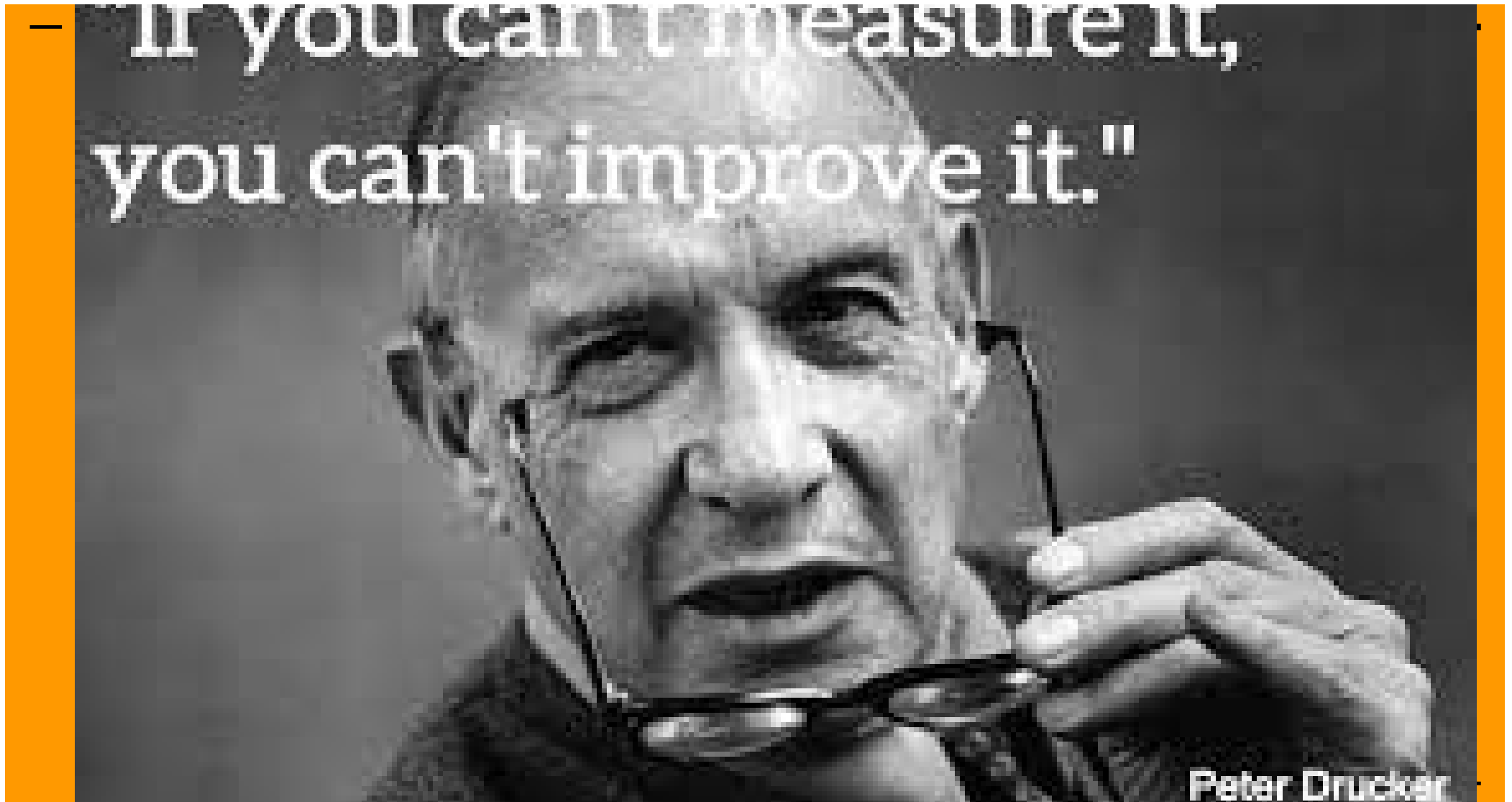
Table 1 Demographics of anonymous feedback form respondents.

Maraenui Resident	POD User		Grand Total
	No	Yes	
No	15	14	29
Female	14	10	24
Male	1	4	5
Yes	7	18	25
Female	4	10	14
Male	3	8	11
Grand Total	22	32	54



Figure 12 Key aspects of the M.E.K.E. Initiative that brought the community together.





Attachment 1

The Impact



Tamariki and Rangatahi



Mainstream Gyms



Te Pukenga - EIT



Te Pukenga - EIT



Empowerment



119 kgs

88 kgs

For NZ Citizens and Permanent Residents

FEES FREE

NZ Certificate in Foundation Skills [Level 2]
Exercise and Wellbeing

Gain the confidence and skills to pursue further study in the exercise and wellbeing fields. The programme will give you what you need to continue onto the NZ Certificate in Sport, Recreation and Exercise [Level 3].

Campus: Massey Learning Centre
 Starts: July
 Length: 17 weeks full-time
 Contact: Sue Jackson | Phone: 06 830 1531 | Email: sjackson@eit.ac.nz

EASTERN INSTITUTE OF TECHNOLOGY
eit.ac.nz | 0800 22 55 348 |

Graduate



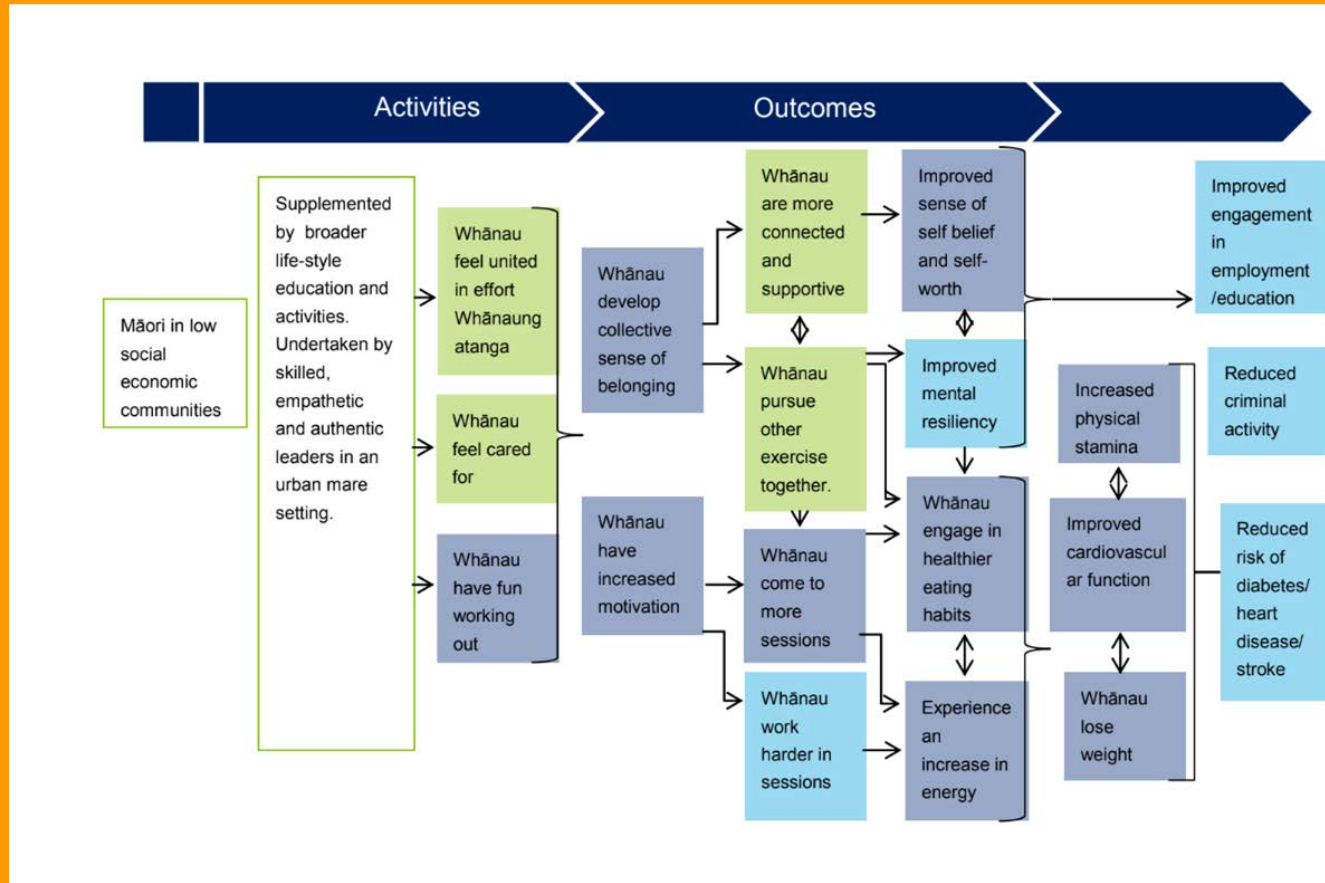
Entrepreneur



Attachment 1

New POD for Taupo





If we do nothing,
these 100 people will cost the
public service system **\$7 million**

**The cost to
change the lives**
of these 100 people
would be **\$2.7 million**

Share Image

The infographic features a central red 'Y' shape at the top with two green arrows pointing downwards towards the two text blocks. The left side shows a grey park bench and a green tree. The right side shows a grey house with a white window and three blue flowers.

PARTNERS





The (Former) Women's Rest

A heritage restoration and conservation project



Attachment 2

Project Team:

Barbara Arnott, Board Chair, ADT

Simon Dunn, Board Trustee, ADT (Project Lead)

Jeremy Smith, Heritage Manager / GM, ADT

Bryan Faulknor, Property Manager, NCC

Jamie Goodsir, Acting Director Programme Delivery, NCC

Hugh Mullane, Building Renewals and Project Lead, NCC

Consultants:

Gavin Cooper, Architect

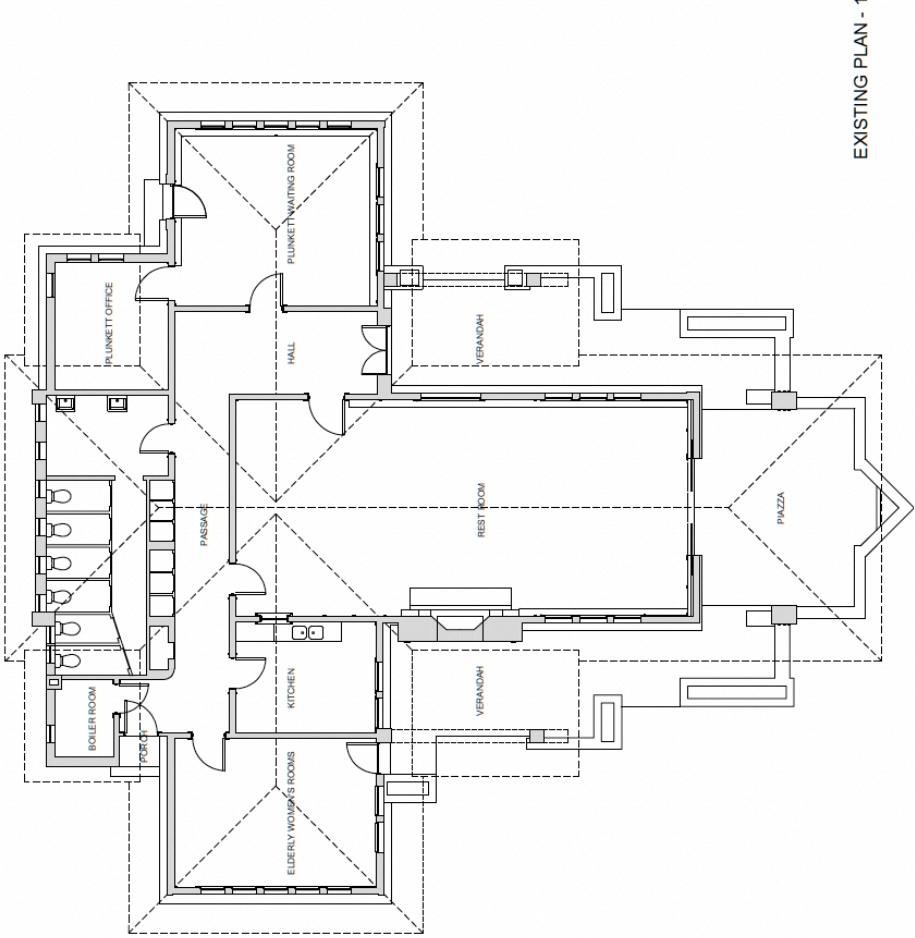
Ann Galloway, Heritage Architect

Garry Newton, Structural Concepts

Gary McCalmont, MCC Cost Consulting

Tom Hosford, Mitchell Daysh, Resource Mgmt and Planning

and more



EXISTING PLAN - 1

Attachment 2

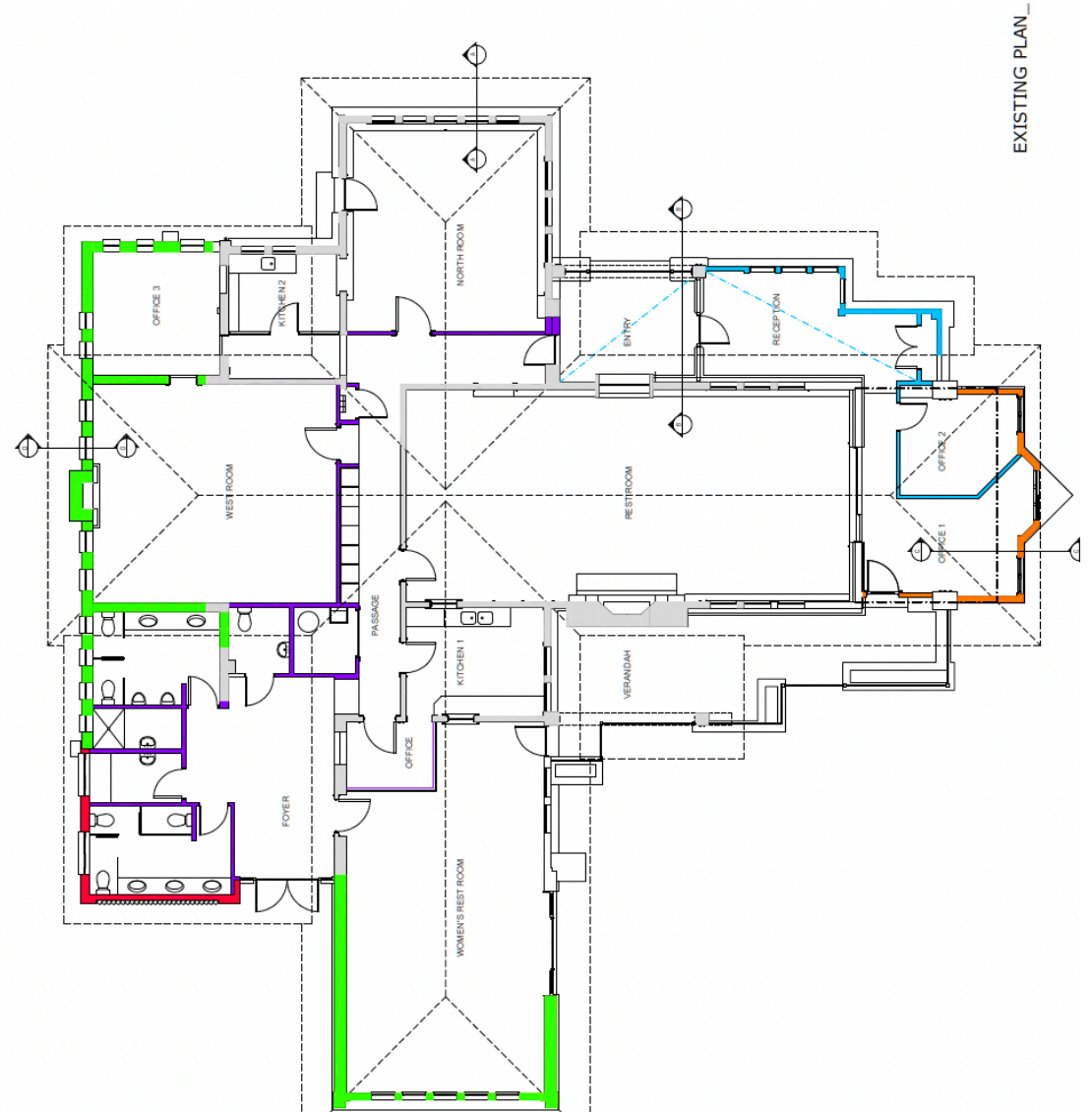


HERITAGE INVENTORY

FORMER NAPIER WOMEN'S REST
CLIVE SQUARE EAST, NAPIER

FORMER
NAPIER
WOMEN'S REST
Ann Galloway Architect Ltd

November 2022



EXISTING PLAN

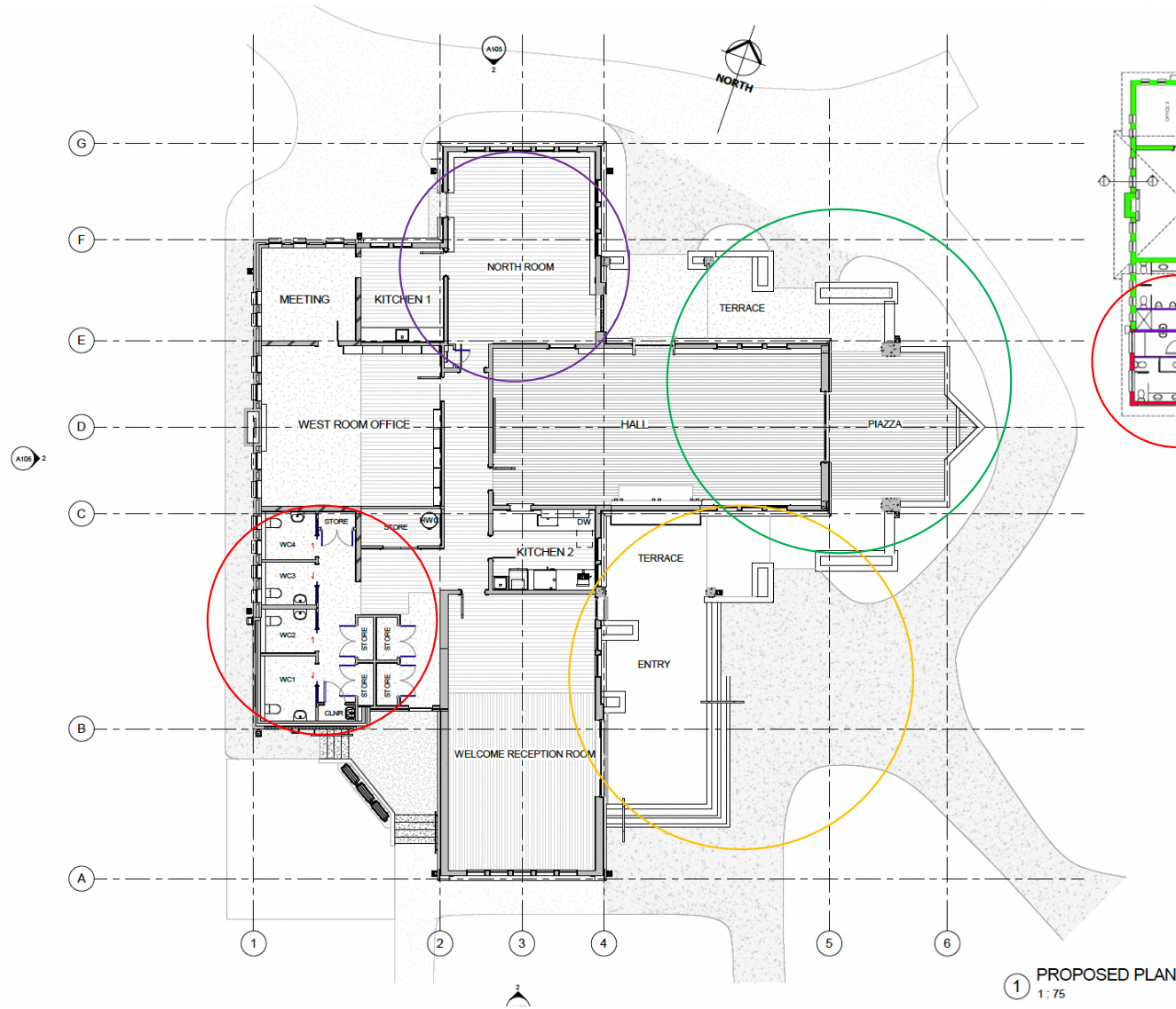
Attachment 2



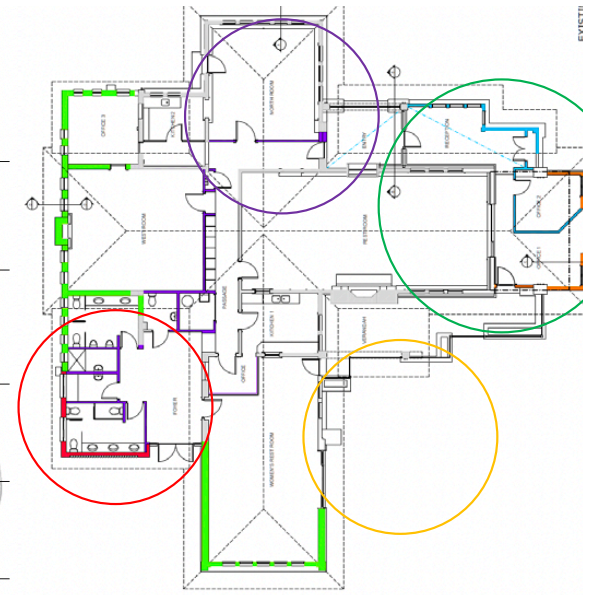
Attachment 2



Attachment 2



1 PROPOSED PLAN
1:75



Attachment 2

gavincooperarchitect

arch@gavincooper.co.nz
027 666 6330

project:
Memorial Square
Community Rooms
RESTORATION
address:
Memorial Square
NAPIER

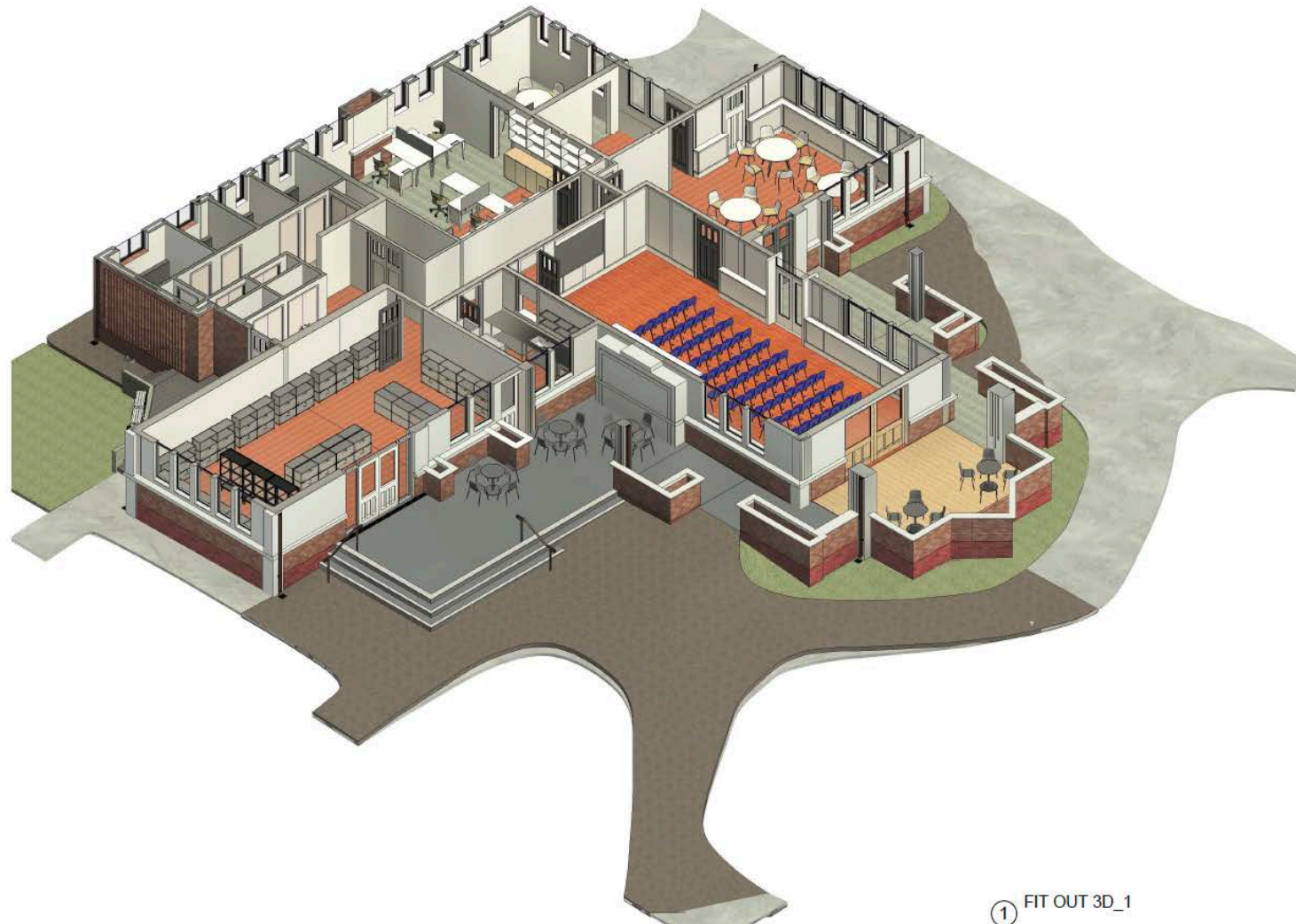
client: Napier City Council

issue date: 20.05.23

status: PRELIMINARY DESIGN

scale @ A3: 1:150 scale: 1:75

PROPOSED PLAN



① FIT OUT 3D_1

NOTES:

gavincooper architect
 arch@gavincooper.co.nz
 027 666 5330

project: Memorial Square Community Rooms RESTORATION
 address: Memorial Square NAPIER

client: Napier City Council

issue date: 20.05.23

status: PRELIMINARY DESIGN

scale @ A3 scale:

FIT OUT 3D_1



MITCHELL
DAYSH

ART DECO TRUST

**NEW ART DECO CENTRE
PROJECT**

Resource Consent Application and
Assessment of Environmental Effects



Heritage New Zealand
Pouhere Taonga





Attachment 2

Thank you
Questions?

DIA

Ue te Hīnāture - Local Government RM Reform Update

Napier City Council
8 June 2023

Warren Ulusele
Partnership Director



Te Tari Taiwhenua
Internal Affairs

Overview – DIA involvement with RM Reform

1. Resource Management Reform – timeline
2. Areas of focus for DIA
3. Working with MfE and Local Government



Te Tari Taiwhenua
Internal Affairs

Resource Management Reform

Resource Management System

Natural and Built Environments Act

- Provides national direction through the **National Planning Framework (NPF)**
- Requires proactive, outcomes-based planning
- Gives effect to the principles of Te Tiriti
- Enables Te Oranga o te Taiao to be upheld, including by protecting and enhancing the natural environment
- Enables communities to use the environment in a way that supports intergenerational wellbeing

Spatial Planning Act

- Requires long-term spatial planning at the regional level through the development of **Regional Spatial Strategies (RSSs)**
- Intended to enable and drive changes in land use and the coastal marine area, while protecting and enhancing the natural environment
- Integrates planning across different legislative frameworks that is associated with the management of the natural and built environments
- Gives effect to the principles of Te Tiriti

Climate Adaptation Act

- *Still in development*
- Expected to provide mechanisms to implement managed retreat in response to sea level rise
- Expected to provide for compensation to landowners where managed retreat is necessary

RM Reform – intended timeline

- Select Committee report back late June
- Committee of the whole in August
- Enactment in this term of Government
- Potentially 7 - 10 years implementation



RM Reform – DIA role

- DIA focusing on transition / implementation
 - Working with MfE to identify local government related issues and required support
 - Establishment regional planning committees
 - Role of Central Government appointee for SPA committee
 - How does the system interact with LGA
 - National direction i.e. NPF



RM Reform – working groups

- Local Government Steering Group
- Local Government Implementation Group
 - Engagement and communications (upon enactment);
 - Regional Planning Committee guidance – including the process for appointment of Māori/iwi/hapu;
 - Capacity and capability – including capacity for Māori
 - Transition planning – including working in dual systems
 - Digital enablement – to support implementation of the reform



Questions?

Warren Ulusele, Partnership Director:

- Zone 6
- Portfolio Lead – Urban Development / Housing

Caroline Dumas, Partnership Director:

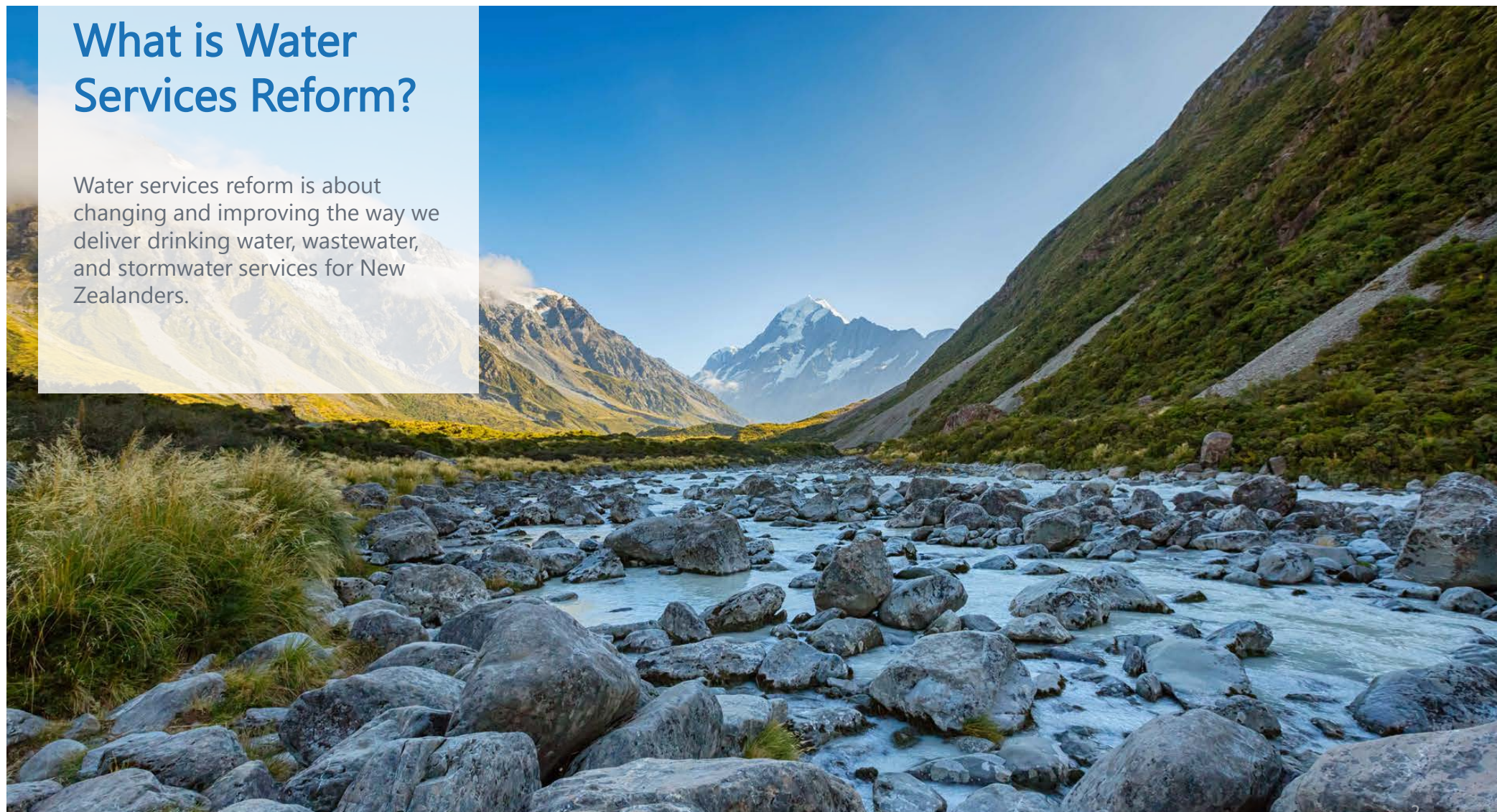
- Zone 3
- Portfolio lead – Transport

Water Services Reform

Update for Napier City Council
8 June 2023

What is Water Services Reform?

Water services reform is about changing and improving the way we deliver drinking water, wastewater, and stormwater services for New Zealanders.



Why are changes needed?

Reforms are about ensuring

- necessary changes are affordable for New Zealanders
- everyone has safe and reliable drinking water
- we grow, maintain and upgrade wastewater networks to deliver good community and environmental outcomes
- we improve the way we manage stormwater to prevent flooding and pollution of our drinking water

Our country's water infrastructure is under pressure

- Ageing infrastructure
- Historical under-investment
- Growing impacts of climate change
- Population growth
- Increased service demands on councils

Meeting these challenges is estimated between \$120 billion - \$185 billion over the next 30 years

- Affordability is the key driver of reforms
- Separating water from councils' day-to-day operations will help to alleviate pressure on council funding and allow the needed long-term investment into water services
- The status quo is not an option

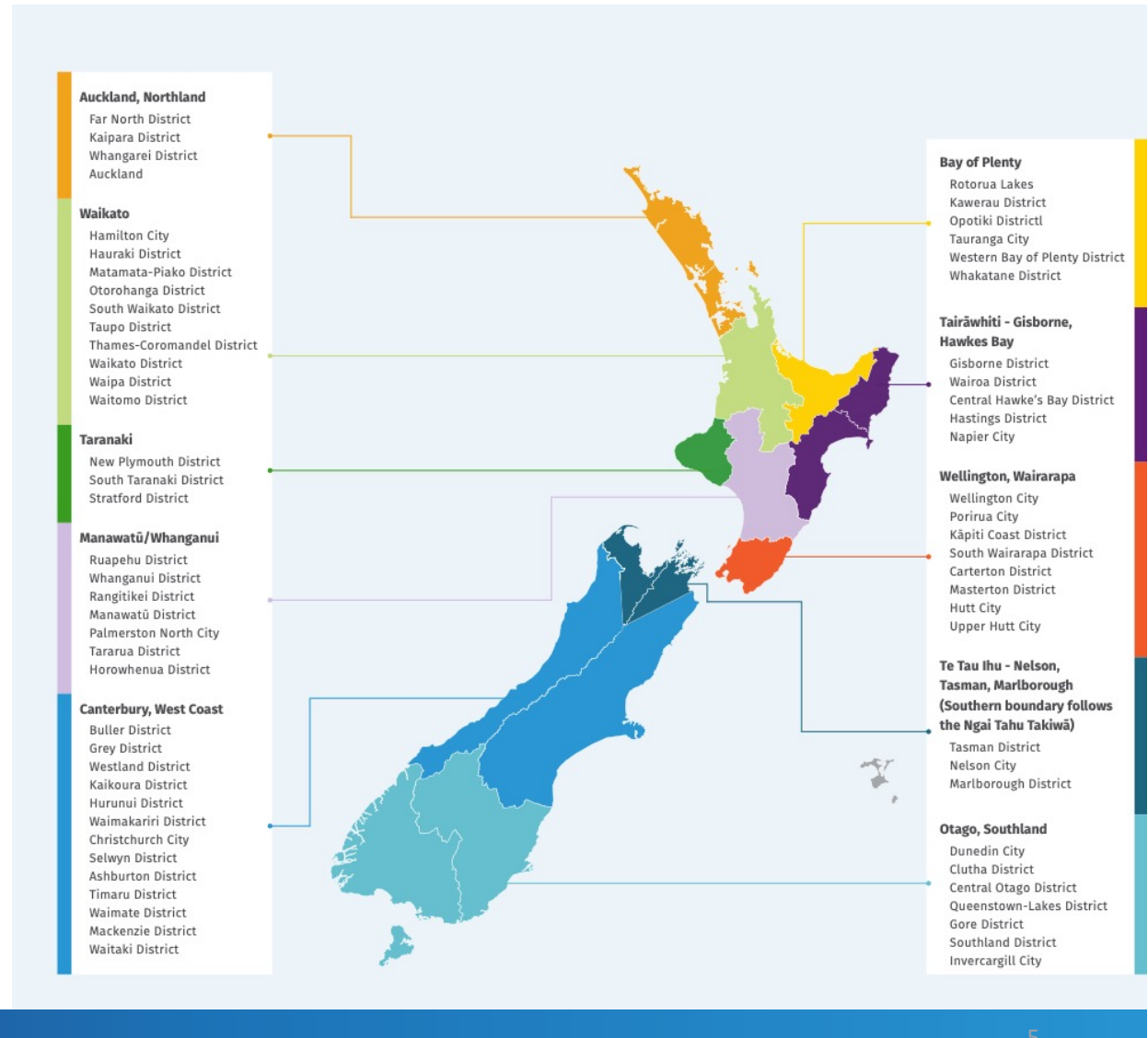


What's changing?

A refocus on Water Services Reform

In April 2023, the Government announced changes to reforms as part of its refocus of water services reform:

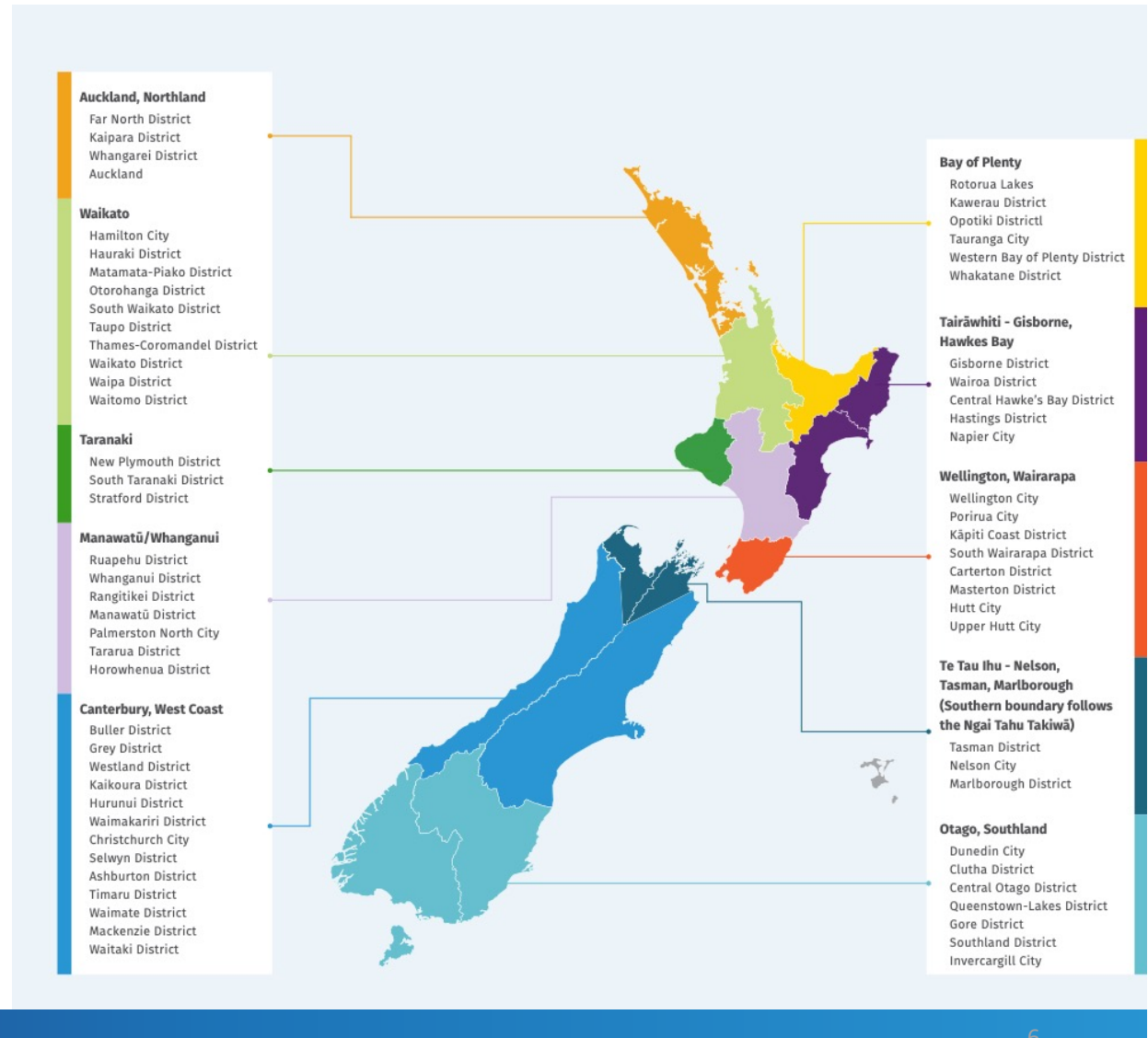
- New model: 10 Water Services Entities, closely based around existing boundaries (voluntary amalgamation process – at a later point).
- Changes to transition timeline: entities to start delivering water services in a staggered manner from early 2025 to 1 July 2026. The NTU will engage with councils to do this to ensure a seamless transition to gain the full benefits for communities.
- More entities will mean a stronger connection with local communities and more local representation.
- Still owned by local councils but entities will have operational and financial independence.



A refocus on Water Services Reform (cont.)

In April 2023, the Government announced changes to reforms as part of its refocus of water services reform:

- Every territorial authority owner – and therefore every community – is represented on Regional Representative Group.
- Mana whenua representation will remain at 50% of Regional Representative Group members.
- Te Mana o te Wai remains at the core of water reform.
- New mechanism – Community Priority Statements to sit alongside Te Mana o te Wai statements.



Stormwater

- Under the reform, only the responsibility for the **urban stormwater network** will be transferred to the Water Services Entities.
- The legislation defines the urban stormwater network as hard (pipes), green stormwater infrastructure and overland flow paths, but does exclude transport stormwater systems.
- The National Transition Unit (NTU) is currently developing decision support tools that will identify which urban stormwater network assets will transfer to the water service entities.
- Councils will continue to have responsibilities for **land drainage**, reflecting the variability of existing ownership and management arrangements for land drainage across the country, and the mix of public and private benefits related to land drainage functions in rural areas.
- However, to address any potential gaps in capacity and capability that may be created by the reform, the legislation provides that in addition to any general technical support, councils will be able to contract the Water Services Entities to manage land drainage schemes.



How will the Water Services Entities operate?

Governance

- Each water services entity will be governed by a professional board. Members will be appointed for their competencies and skills.
- The board must include members with appropriate knowledge of Te Tiriti o Waitangi/The Treaty of Waitangi, Tikanga, and Te Ao Māori but is not required to have Iwi/Māori representatives.

Local voice

- Local voice and representation has been strengthened through regional partnership via the regional representative group.
- The regional representative groups are 50/50 partnerships between council representatives and mana whenua that will provide strategic oversight and direction to the entities.
- Under the 10-entity model, every territorial authority owner – and therefore every community – will be represented on the entity's regional representative group.
- Communities will continue to have influence over the water services entities through regional representative groups.
- The role of the regional representative group for each entity is to appoint the board and set expectations of how the entity runs that reflect the needs of communities. The regional representative group will also monitor and hold the board to account for meeting those expectations.

Implications for Councils

Attachment 4



What does this mean for council's LTP process?

- The change in establishment date means that councils will continue to deliver water services until the new 'go live' date for their entity.
- This will need to be reflected in councils' planning and reporting docs, which could include up to the first 2 years of the 2024-2034 LTP cycle.
- It is proposed there will be legislative amendments and guidance that clarify what councils are expected to include in their planning and reporting docs over this period.
- NTU will work with the local government sector reps and the Auditor-General so we can provide guidance to councils asap.



What does this mean for council funding?

Better off funding

- First \$500m of 'better off funding' for councils is unaffected by recent changes.
- Second tranche of \$1.5b 'better off' funding has been discontinued to reduce the debt burden on the new entities and ensure they can operate sustainably.

No worse off funding

- The \$500m 'no worse off' funding package for councils will remain in place and water service entities will continue to be responsible for making these payments to local authorities upon entity establishment.
- This funding will ensure no council is left worst off as a result of reforms.

Legislative changes and next steps



Arora River, South Island

Water Services Reform – Legislation Programme

- The Government intends to pass legislation to bring into effect the new policy before the General Election in October 2023.
- This provides Councils and their water services staff certainty for planning and employment purposes and allows work to set up the new entities to continue.
- The Water Services Legislation Bill and The Water Services Economic Efficiency and Consumer Protection Bill will continue their progress through Parliament on their current timetable.
- The Finance and Expenditure Committee is due to report back on these bills on 8 June 2023.
- There are outstanding questions to be considered, which include:
 - Implementation approach
 - How to maximise efficiencies and gains in a ten-entity model
 - Guidance for councils for planning purposes
 - Financing arrangements
 - Functioning of new mechanisms i.e., priority statements

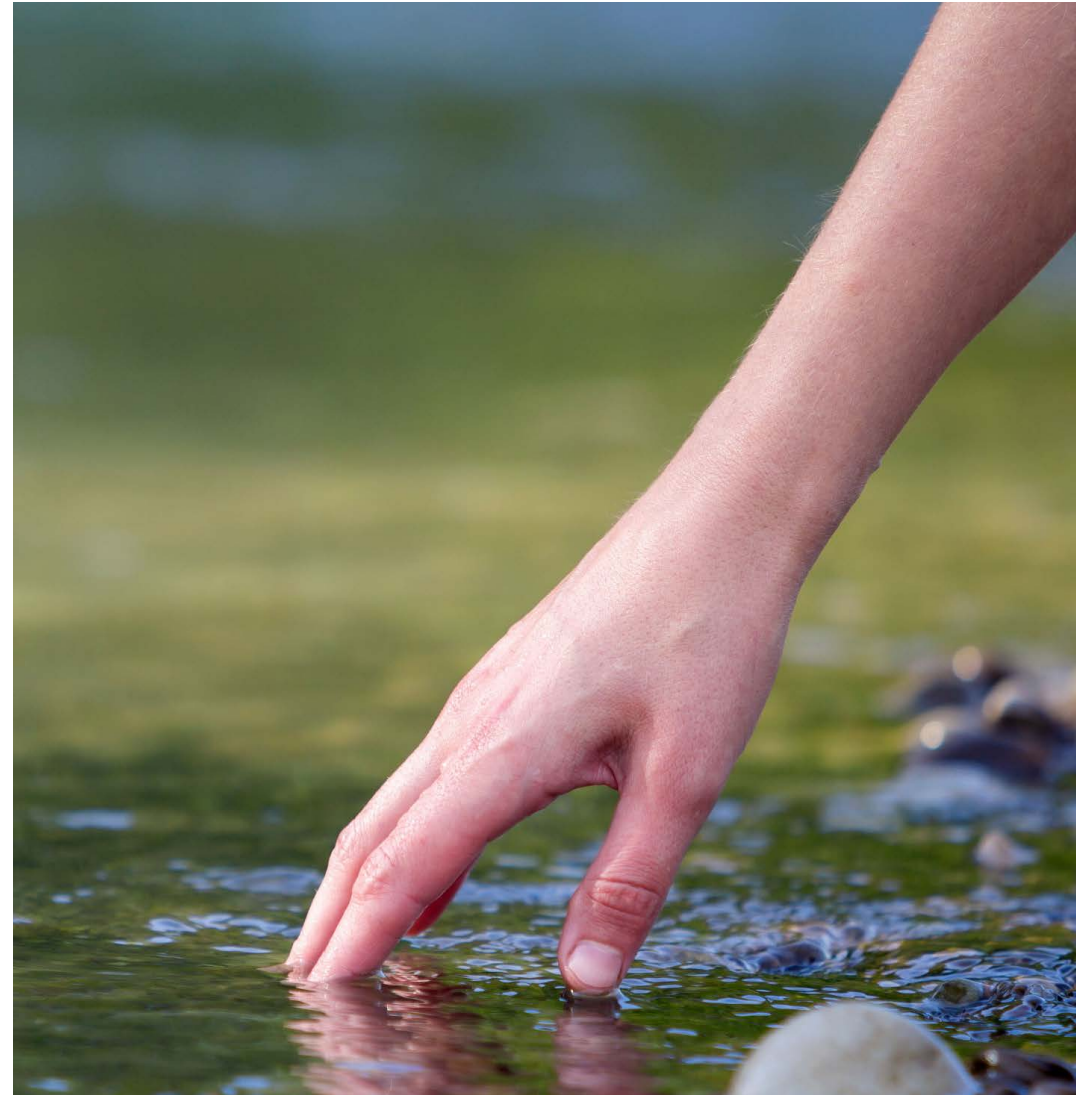
Water Services Reform - Implementation

Programme adjustments will take a few months to complete as we work in step with policy development to support government direction:

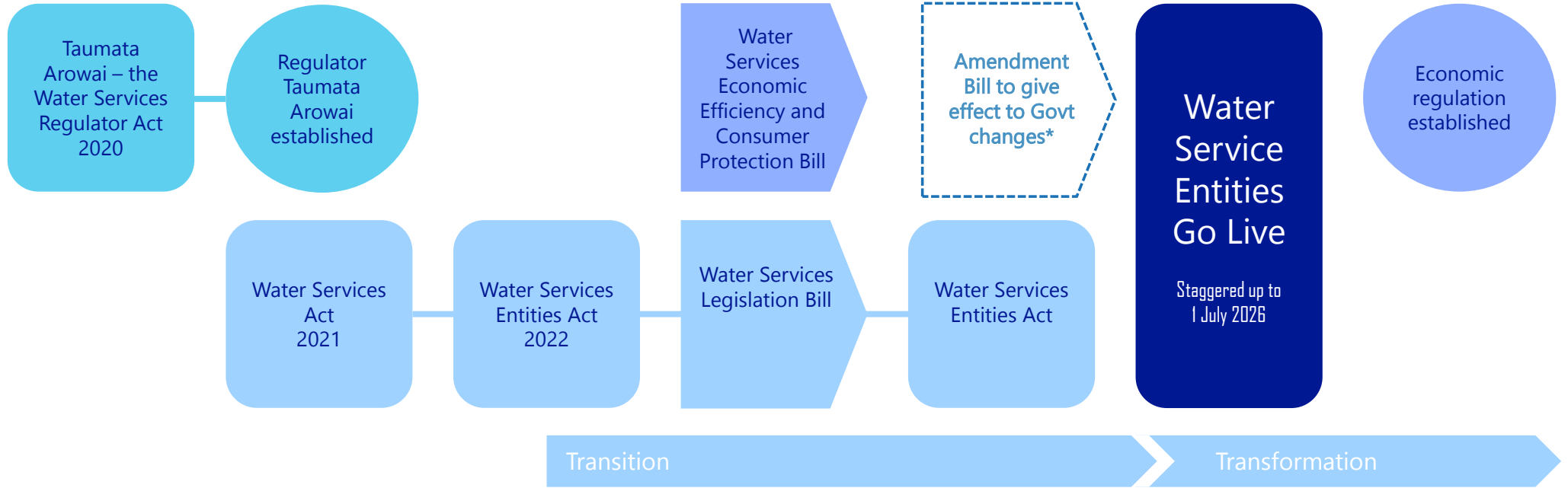
- Start with a high level implementation strategy focused on how we make the go-live window created by the government direction work in a way that is efficient and effective.
- Move to a focus on delivery approach - how we embrace a regional delivery approach work to create the 10 entities in concert with what is delivered centrally within the NTU.
- And then into detailed planning, which for a programme of this size is challenging.

While we advance deliverables still critical to the programme, we are now in a position to reconsider how we go about delivering the programme over a longer period than first envisaged. This provides the opportunity for:

- Stronger partnerships with councils, iwi and the broader sector.
- Greater regional stake. Where we can be very clear about what work is best carried out centrally versus regionally.
- A more sustainable delivery tempo over a longer period of time.



When? – determined by legislative process



*In addition to the two Bills currently before the Finance and Expenditure Select Committee (report back due 8 June 2023) the Government intends to introduce and pass legislation before this year’s election, giving effect to the changes it announced in April. It will be subject to Parliamentary timetable and processes, including the opportunity for public feedback.

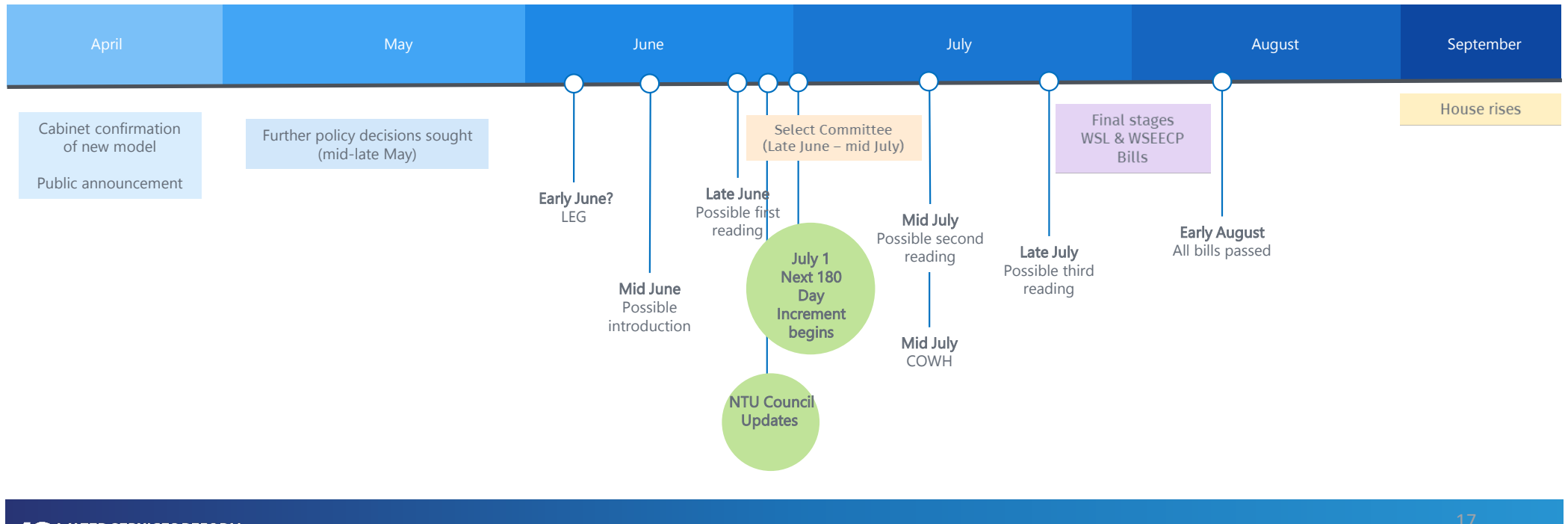
Cyclone Recovery - Severe Weather Emergency Legislation Act 2023 (enacted 20 Mar) Severe Weather Emergency Recovery Legislation Act 2023 (enacted 12 Apr) applies to 37 Councils.



When?

Draft policy and legislative calendar lens (yet to be agreed with the Government)

NTU Replanning Process (dependant on legislation)





Kia ora | Thank you