



NAPIER
CITY COUNCIL
Te Kaunihera o Ahuriri

Napier Civic Building
231 Hastings Street
t +64 6 835 7579
e info@napier.govt.nz
www.napier.govt.nz

SUSTAINABLE NAPIER COMMITTEE

Open Minutes Attachments

Meeting Date: Thursday 15 May 2025

Time: 1.00pm – 2.25pm

Venue: Chapman Room
Level 1 Chapman Pavilion
McLean Park
Latham Street
Napier

TABLE OF CONTENTS

Public Forum

Attachment 1 Public Forum - Andy Walker Presentation (Doc Id 1853642)43

THE POTENTIAL AMENITY VALUE OF WESTSHORE TO NAPIER CITY



WHERE ARE WE NOW

- Engagement



Figure 1: Coastal Strategy Engagement through 2025

COASTAL HAZARDS STRATEGY AUG '24

Vision

That coastal communities, businesses and critical infrastructure from Tangoio to Clifton are resilient to the effects of coastal hazards.

Priority Unit	Short Term (0-20 yrs)	→	Medium Term (20 – 50 yrs)	→	Long Term (50 – 100 yrs)
Whirinaki (B)	Status quo/ Renourishment	→	Renourishment + Control Structures	→	Sea wall
Bayview (C)	Status Quo/ Renourishment	→	Renourishment + Control Structures	→	Renourishment + Control Structures
Westshore (D)	Renourishment	→	Renourishment + Control Structures	→	Renourishment + Control Structures



THE MISCONCEPTION

Sea Level Rise; not the “Mother of All Ills”

76% of Sandy beaches worldwide are not eroding...

- 48% are stable
- 28% are growing

Sand drifts off a beach through wave action and is replaced

In 28% of cases more sand is replaced than taken, Westshore should be one of them.



NIWA

<https://niwa.co.nz/news/summer-series-week-3-beach-erosion>

Beaches buffer our shores from Mother Nature's might | NIWA



Reuters

<https://www.reuters.com/article/world>

Life's a beach - for the time being - as sandy shores grow, ...

28 Apr 2018 — The first global survey of the world's beaches showed 28 percent of beaches are growing and nearly half are stable, said researchers, whose ...



NASA Earth Observatory (.gov)

<https://earthobservatory.nasa.gov/images/taking-stock-of-the-worlds-sandy-beaches>

Taking Stock of the World's Sandy Beaches

1 Aug 2018 — **Sandy beaches are growing** in some parts of the world



Deltares

<https://www.deltares.nl/expertise/projects/beaches-erosion>

Beaches worldwide are growing

Beaches worldwide are growing · Coastal erosion often a local



NORTHERN BEACH GROWTH

Same Pipe

- Dredgings
- Southern beach erosion
- Southern beach wall pea metal

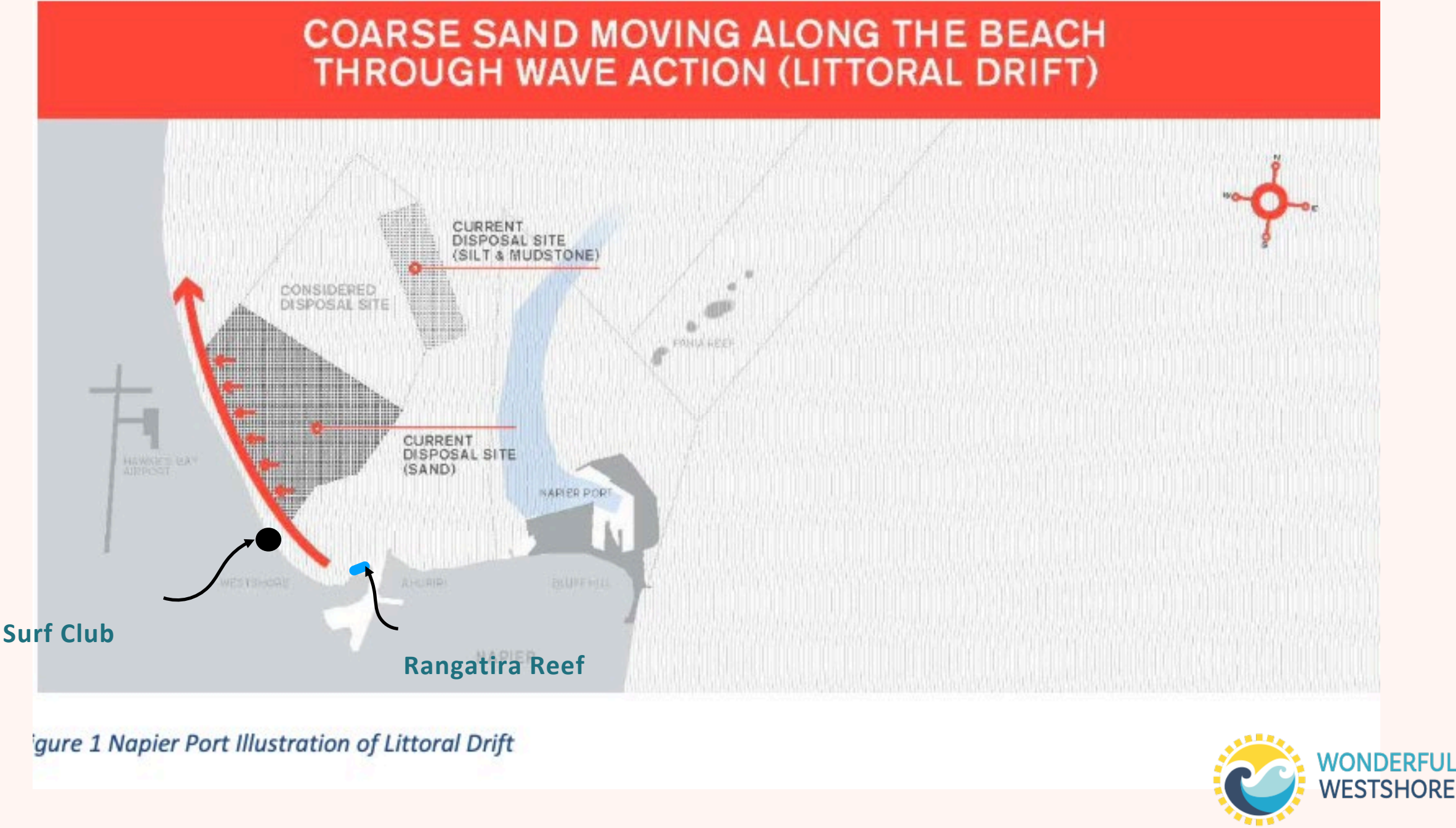


2017



2022

NORTHERN BEACH GROWTH



SOUTHERN EROSION

Jul 22



Feb '23



Jul '23



Jun 24



SOUTHERN EROSION

Jan '25



SOUTHERN EROSION



WORLDWIDE BEST PRACTICE



ScienceDirect.com

<https://www.sciencedirect.com> › science › article › pii

Working with nature to enhance beach accretion



Pulitzer Center

<https://pulitzercenter.org> › stories › how-dutch-are-buildi...

How the Dutch Are Building Coastal Protection for Less

6 Mar 2020 — The 13 miles of bulked-up beach will help the Dutch coastline stand up to erosion, storm surges, rising seas and subsidence, the natural ...



International Institute for Sustainable Development

<https://www.iisd.org> › Home › Projects

Nature-Based Coastal Protection in the Netherlands

In December 2021, we completed a Sustainable Asset Valuation (SAVi) for the Hondsbossche Dunes, a nature-based coastal protection solution in the Netherlands.



International Institute for Sustainable Development

<https://www.iisd.org> › Home › Projects

Nature-Based Coastal Protection in the Netherlands

In December 2021, we completed a Sustainable Asset Valuation (SAVi) for the Hondsbossche Dunes, a nature-based coastal protection solution in the Netherlands.

“WORKING WITH NATURE”

World Wide Best Practice



Holland



Australia



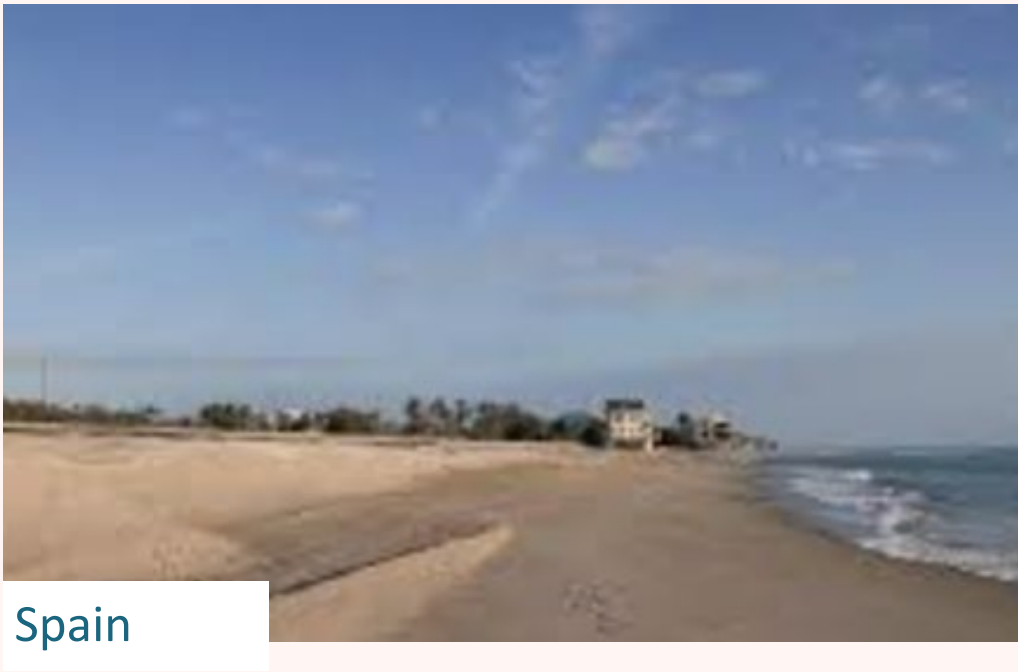
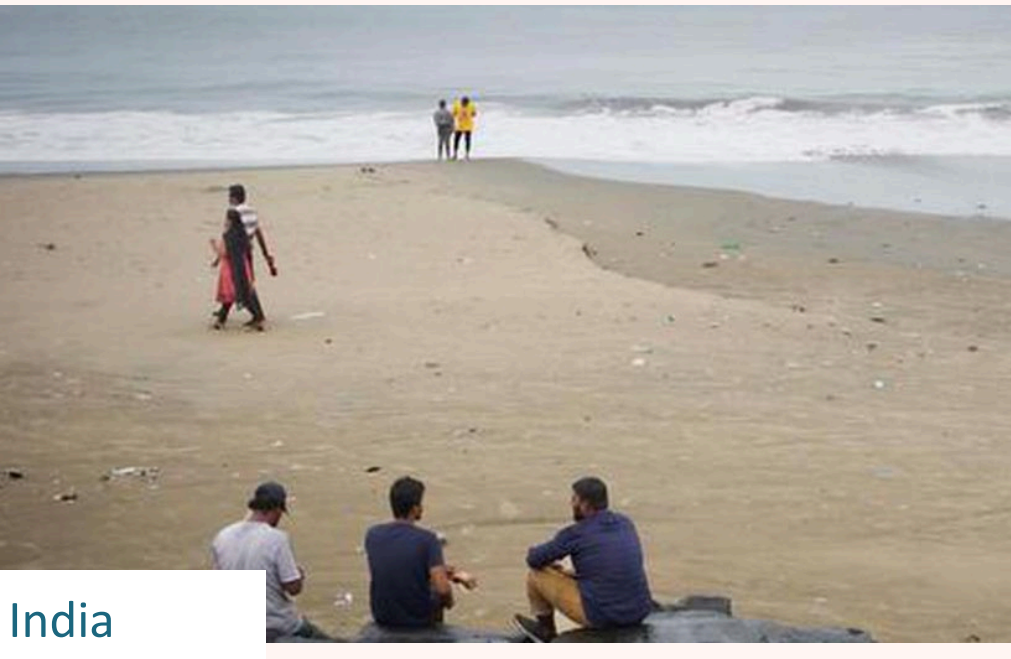
Oriental Parade



Mt Maunganui

“WORKING WITH NATURE”

World Wide Best Practice



“WORKING WITH NATURE”

World Wide Best Practice



Senegal - Before

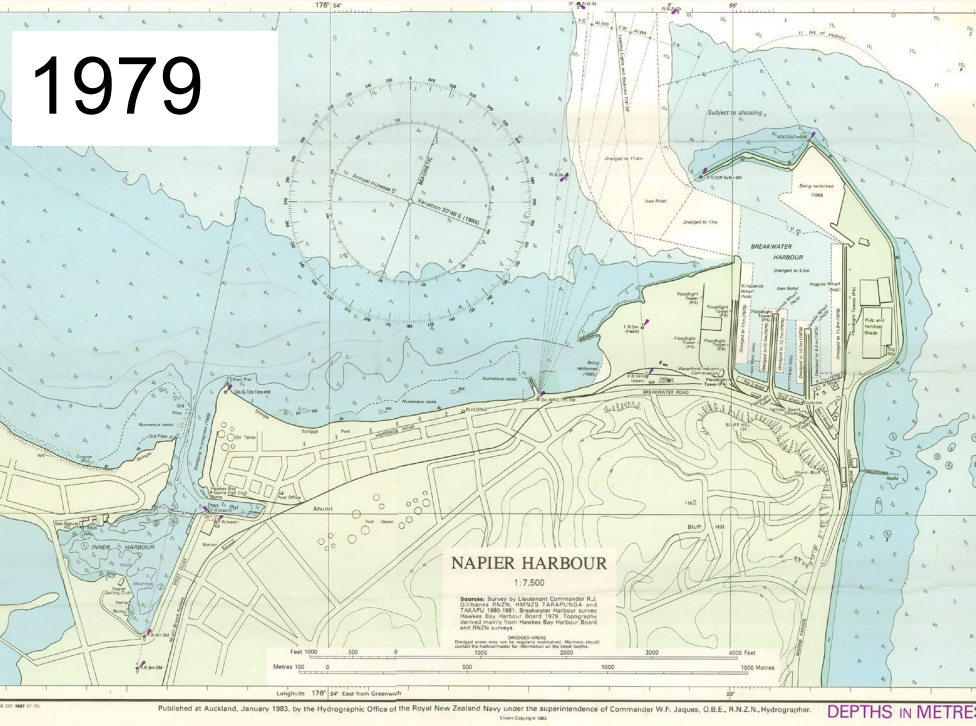
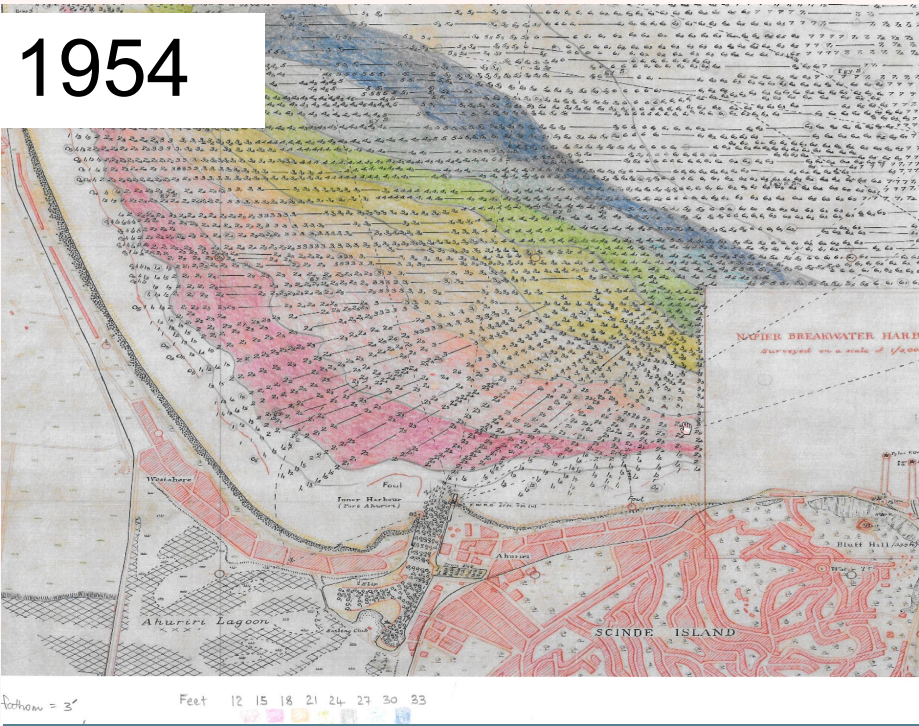
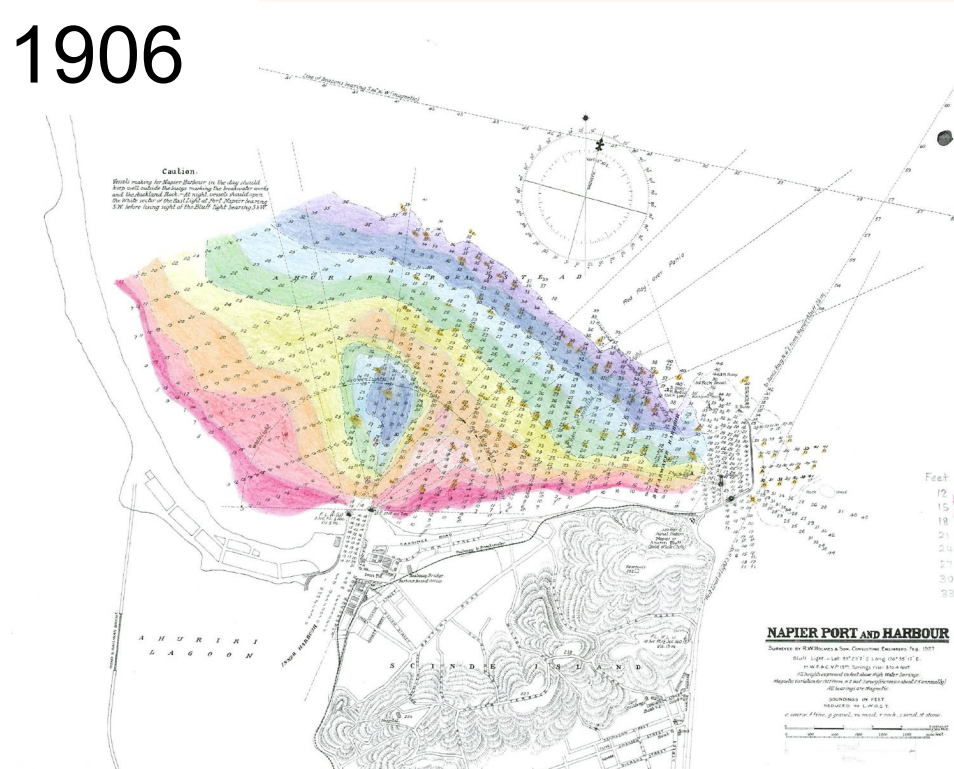
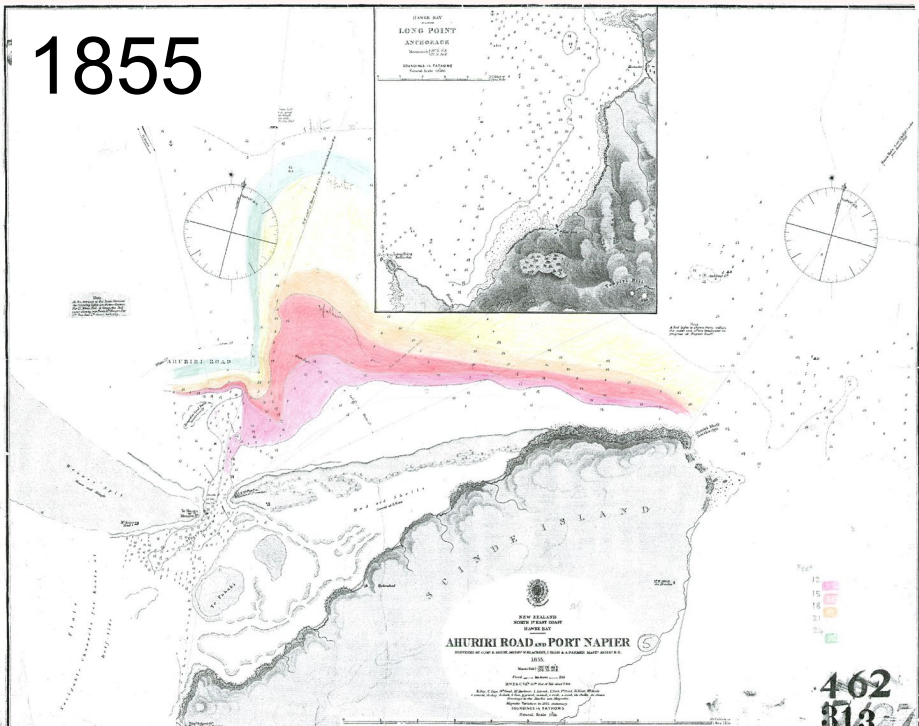
The restoration of Saly’s pristine beaches has “transformed the town’s battered economy”.



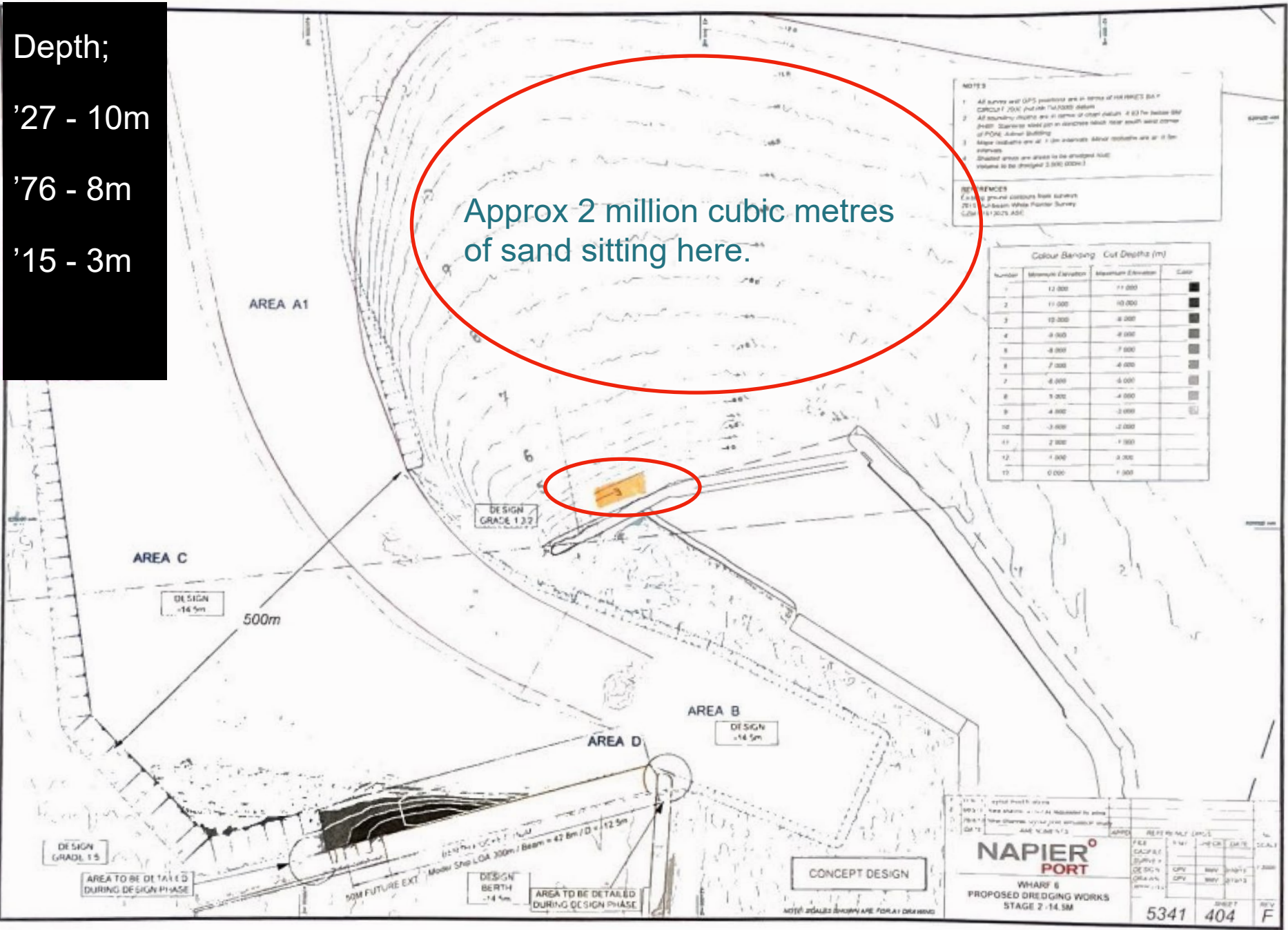
Senegal - After

TOPO MAPS

The Sand Build Up



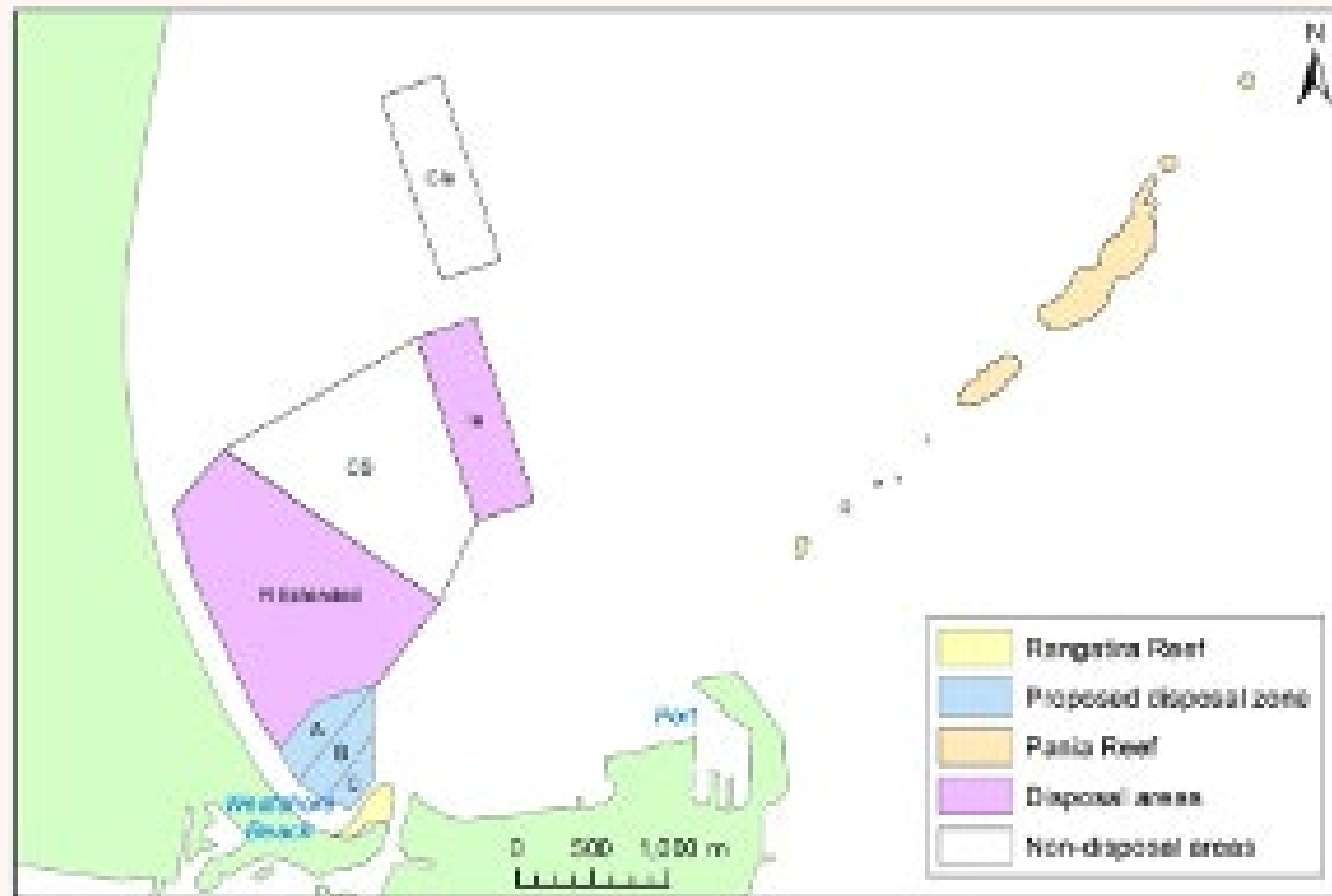
THE GUTS OF IT



THE PROPOSAL

As per HBRC Consent Application 19/20

- Replace the sand in increments
- Assess the impact on the reef
- Described as a “turbid environment” with sand continually passing through it
- Two reports - minimal impact



FOUR AREAS OF BENEFIT

“Can we have our sand back please”

1. Fix Westshore, Fix Bay View, Whirinaki.

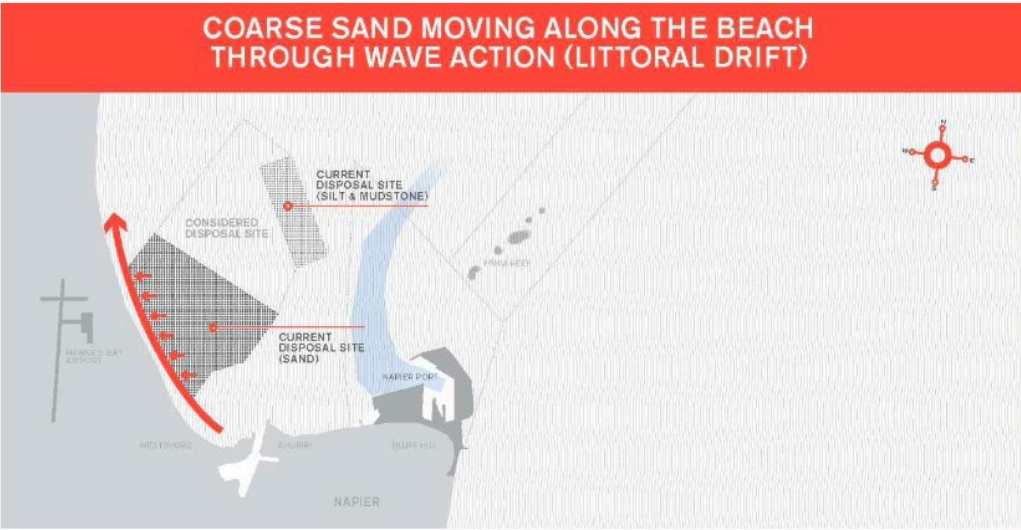
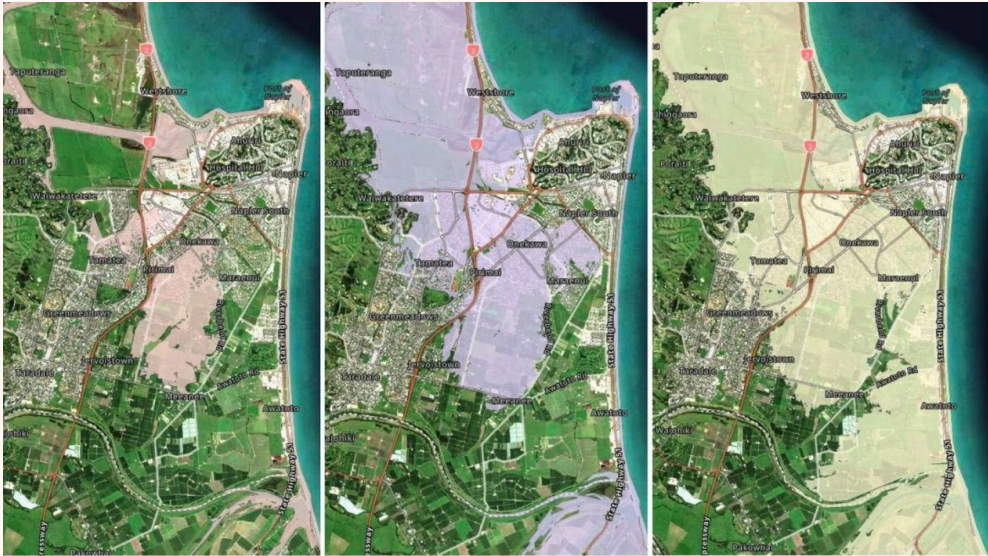


Figure 1 Napier Port Illustration of Littoral Drift

2. Environmental



3. Protect Napier (with estuary fix)



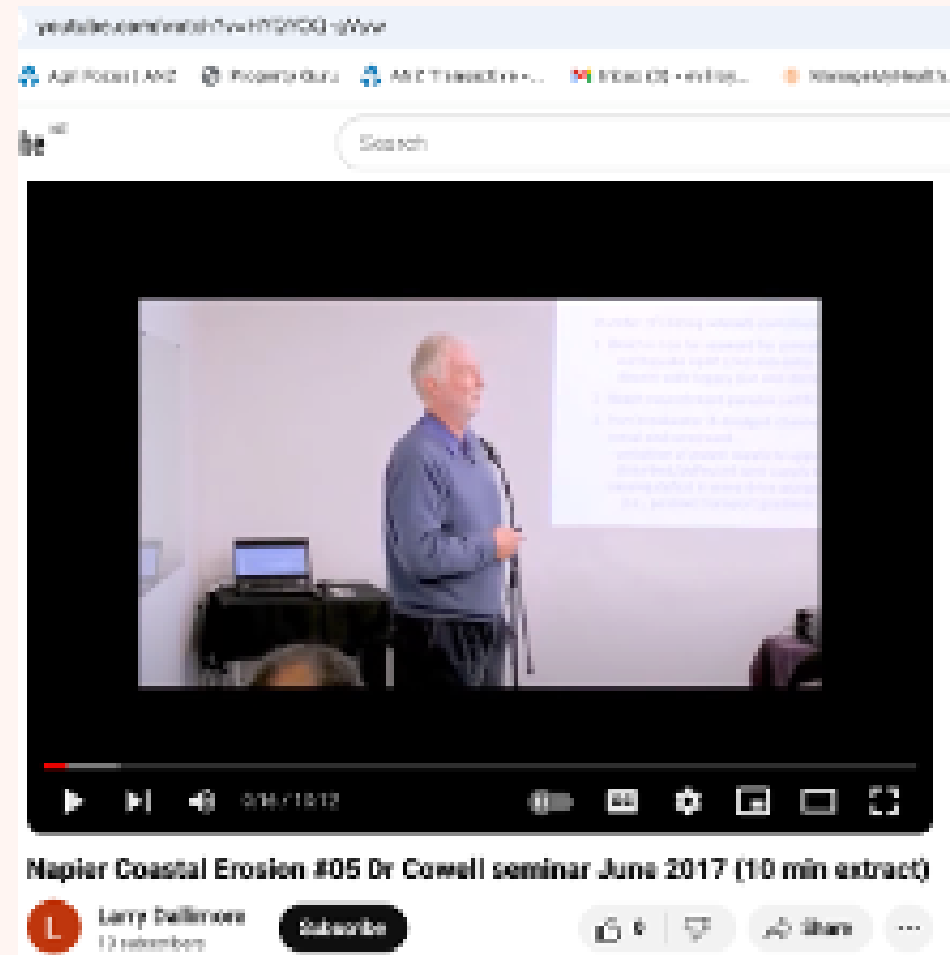
The new flood modelling risk for Napier based on current sea levels (left), a sea-level rise of 0.5m (centre), and a sea-level rise of 1m (right). Photo / Niwa

4. Amenity Value



THE SCIENCE

I can't believe that something as small scale a problem as Westshore can't be turned into a large scale opportunity.



Westshore does not have a problem with storm erosion, the problem is a lack of sand

Nature wants the sand to reach the shore

Nourishing the inshore is completely consistent with accepted principles

It can be a “sandy beach for the citizens of Napier...not to mention the even larger number of tourists... that visit the place and inject their money into the economy every year



NCC ASSISTANCE (?)

- Engagement
- Other?



THANK YOU



THE POTENTIAL AMENITY VALUE OF WESTSHORE TO NAPIER CITY



WHERE ARE WE NOW

- Engagement

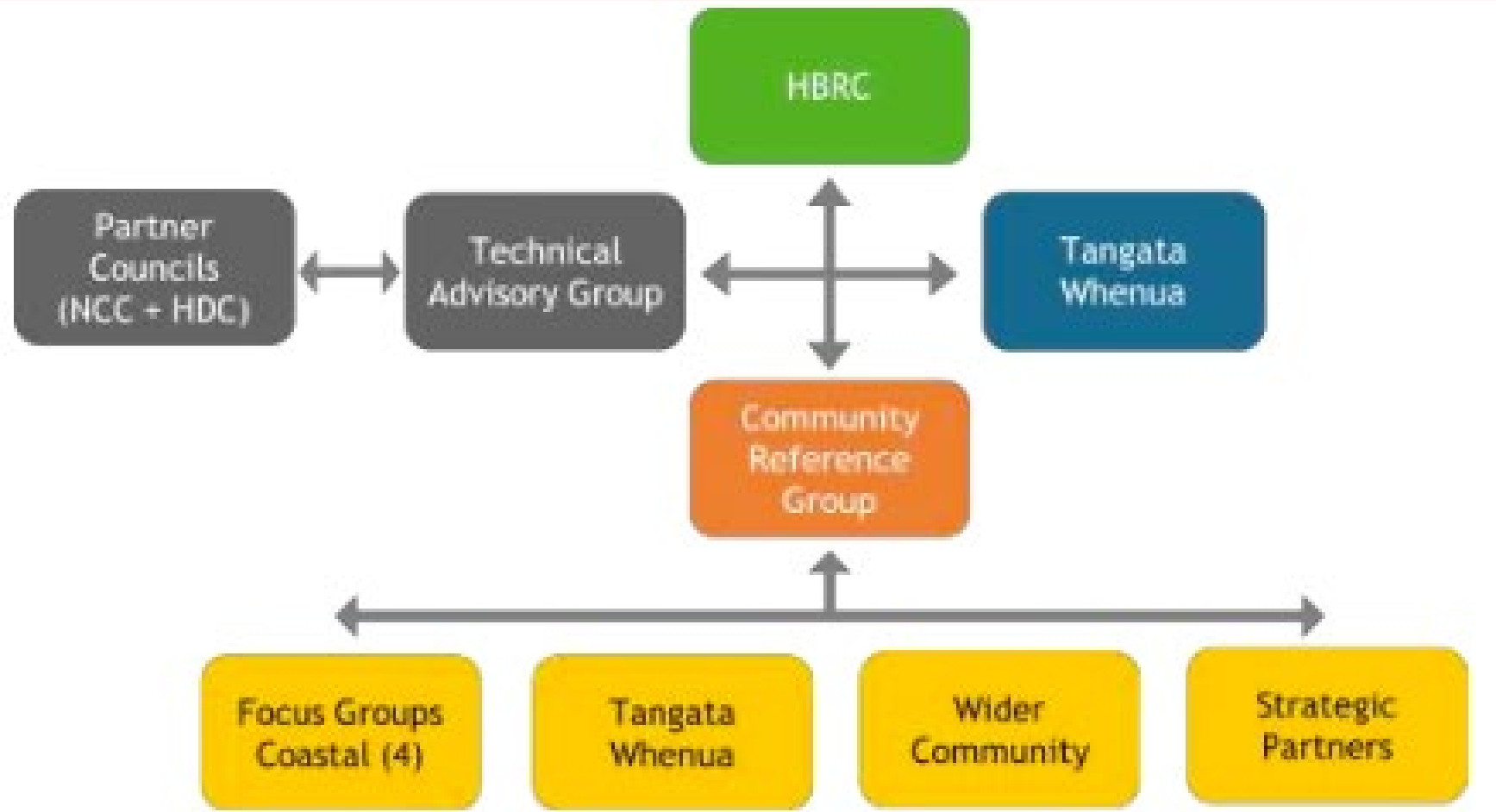


Figure 1: Coastal Strategy Engagement through 2025



COASTAL HAZARDS STRATEGY AUG '24

Vision

That coastal communities, businesses and critical infrastructure from Tangoio to Clifton are resilient to the effects of coastal hazards.

Priority Unit	Short Term (0-20 yrs)	→	Medium Term (20 – 50 yrs)	→	Long Term (50 – 100 yrs)
Whirinaki (B)	Status quo/ Renourishment	→	Renourishment + Control Structures	→	Sea wall
Bayview (C)	Status Quo/ Renourishment	→	Renourishment + Control Structures	→	Renourishment + Control Structures
Westshore (D)	Renourishment	→	Renourishment + Control Structures	→	Renourishment + Control Structures



THE MISCONCEPTION


Sea Level Rise; not the “Mother of All Ills”

76% of Sandy beaches worldwide are not eroding...


- 48% are stable
- 28% are growing

Sand drifts off a beach through wave action and is replaced

In 28% of cases more sand is replaced than taken, Westshore should be one of them.


 NIWA
<https://niwa.co.nz/news/summer-series-week-3-beach-erosion>

Beaches buffer our shores from Mother Nature's might | NIWA

 Reuters
<https://www.reuters.com/article/world/beaches-growing>


Life's a beach - for the time being - as sandy shores grow, ...

28 Apr 2018 — The first global survey of the world's beaches showed 28 percent of beaches are growing and nearly half are stable, said researchers, whose ...

 NASA Earth Observatory (.gov)
<https://earthobservatory.nasa.gov/images/taking-stock-of-the-worlds-sandy-beaches>

Taking Stock of the World's Sandy Beaches

1 Aug 2018 — Sandy beaches are growing in some parts of the world

 Deltares
<https://www.deltares.nl/expertise/projects/beaches-worldwide-are-growing>

Beaches worldwide are growing

Beaches worldwide are growing · Coastal erosion often a local



NORTHERN BEACH GROWTH

Same Pipe

- Dredgings
- Southern beach erosion
- Southern beach wall pea metal

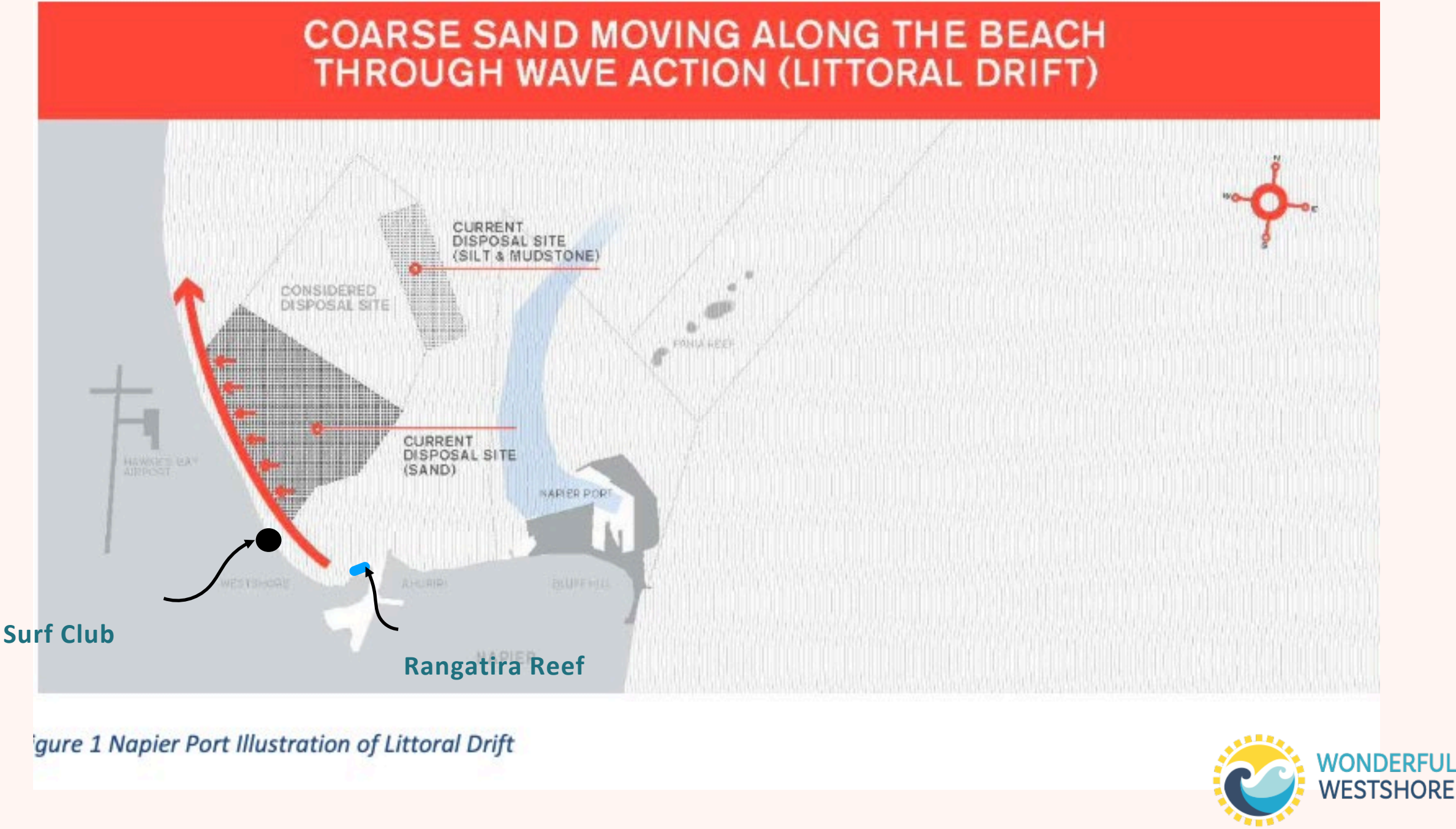


2017



2022

NORTHERN BEACH GROWTH



SOUTHERN EROSION

Jul 22



Feb '23



ul '23



Jun 24



SOUTHERN EROSION

Jan '25



SOUTHERN EROSION



WORLDWIDE BEST PRACTICE



ScienceDirect.com

<https://www.sciencedirect.com> › science › article › pii

Working with nature to enhance beach accretion



Pulitzer Center

<https://pulitzercenter.org> › stories › how-dutch-are-buildi...

How the Dutch Are Building Coastal Protection for Less

6 Mar 2020 — The 13 miles of bulked-up beach will help the Dutch coastline stand up to erosion, storm surges, rising seas and subsidence, the natural ...



International Institute for Sustainable Development

<https://www.iisd.org> › Home › Projects

Nature-Based Coastal Protection in the Netherlands

In December 2021, we completed a Sustainable Asset Valuation (SAVi) for the Hondsbossche Dunes, a nature-based coastal protection solution in the Netherlands.



International Institute for Sustainable Development

<https://www.iisd.org> › Home › Projects

Nature-Based Coastal Protection in the Netherlands

In December 2021, we completed a Sustainable Asset Valuation (SAVi) for the Hondsbossche Dunes, a nature-based coastal protection solution in the Netherlands.

“WORKING WITH NATURE”

World Wide Best Practice



Holland



Australia



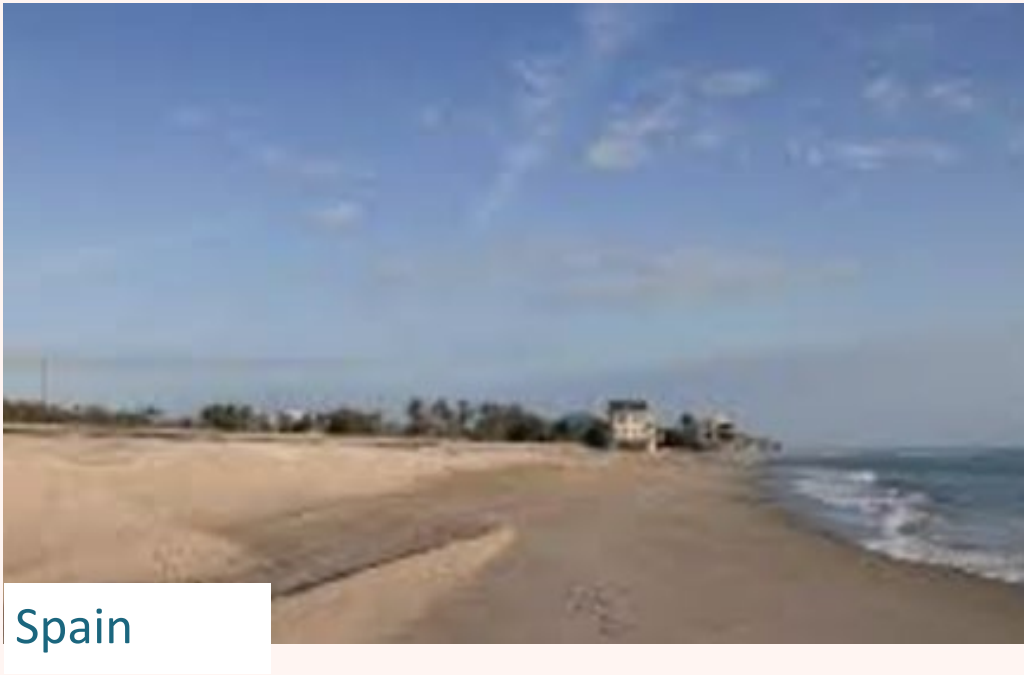
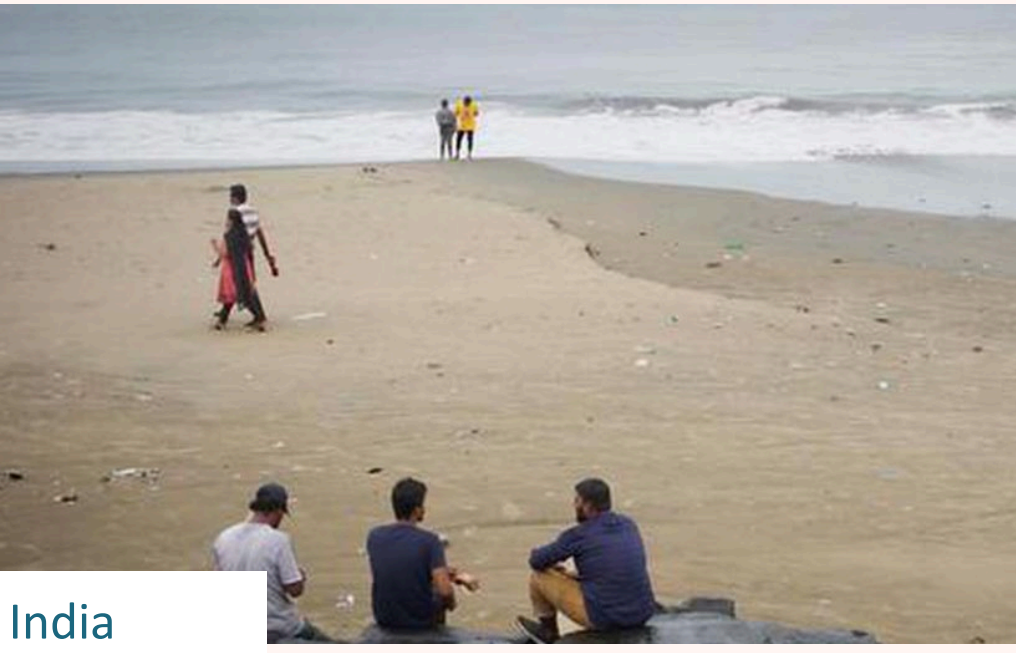
Oriental Parade



Mt Maunganui

“WORKING WITH NATURE”

World Wide Best Practice



“WORKING WITH NATURE”

World Wide Best Practice



Senegal - Before

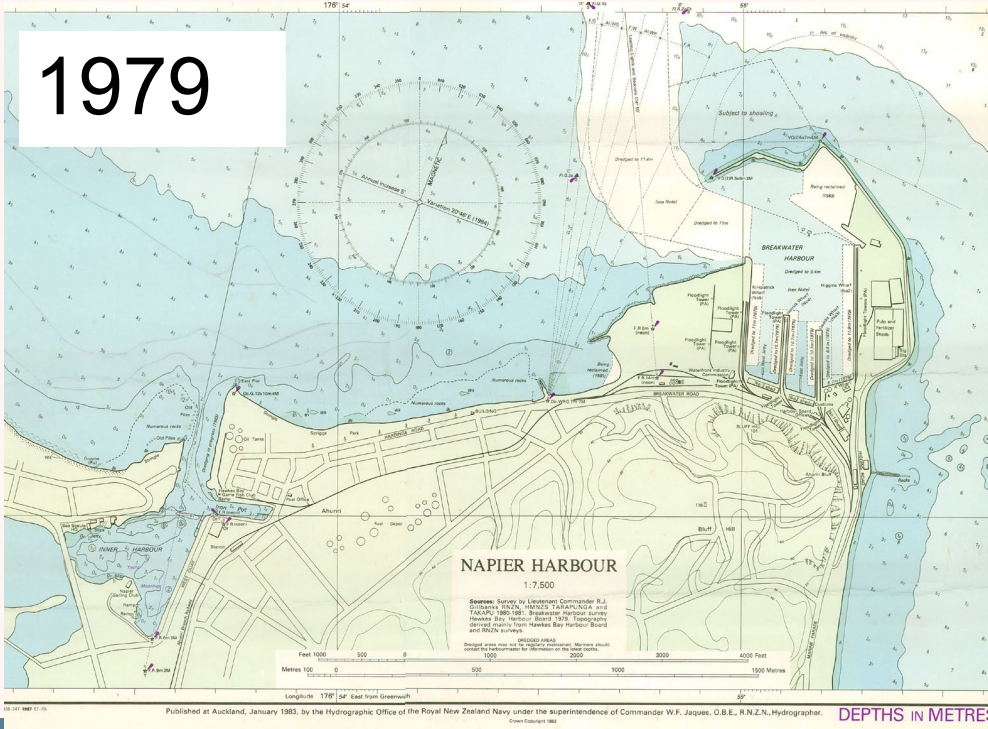
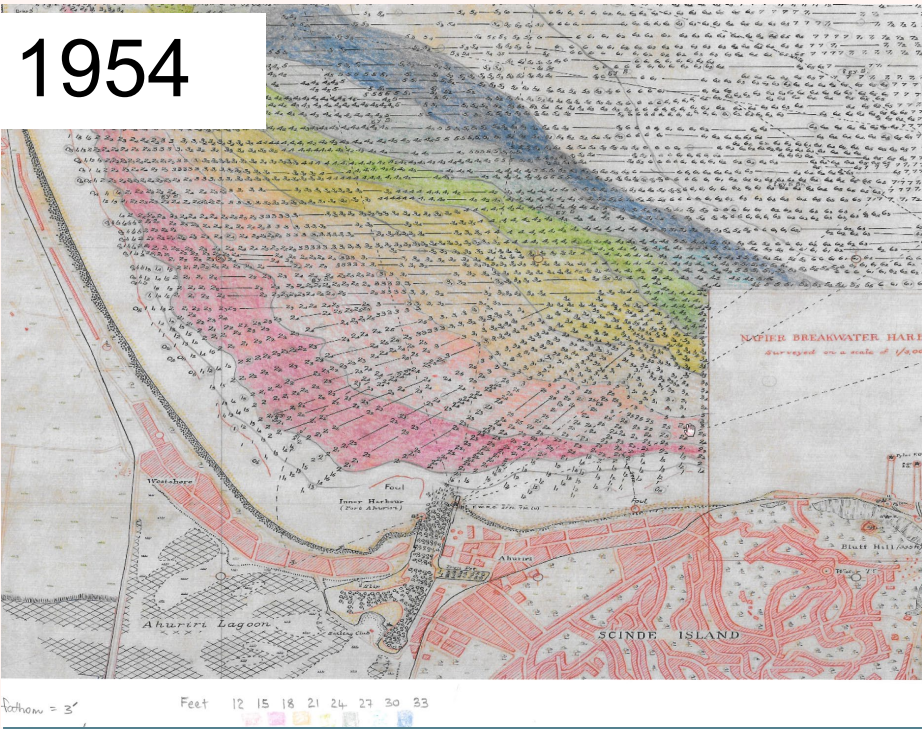
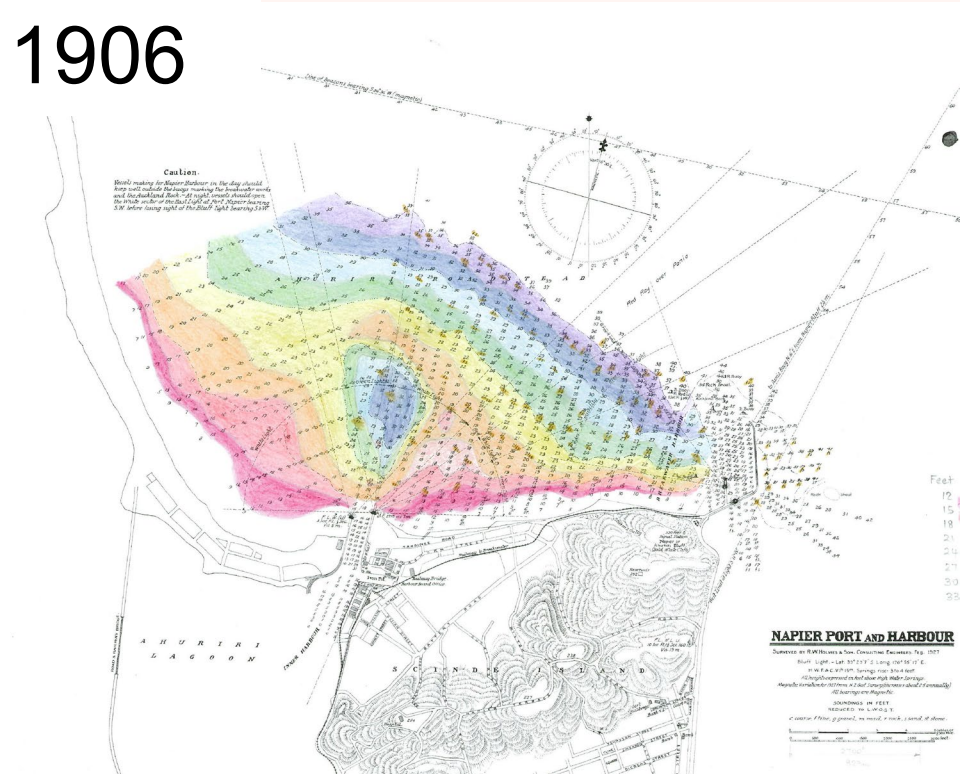
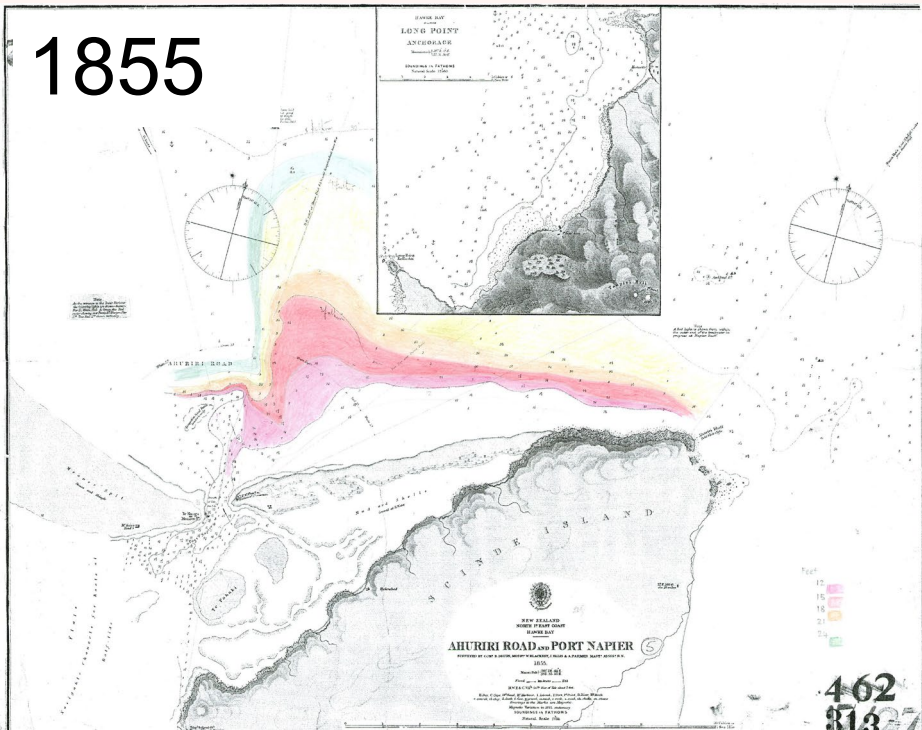
The restoration of Saly’s pristine beaches has “transformed the town’s battered economy”.



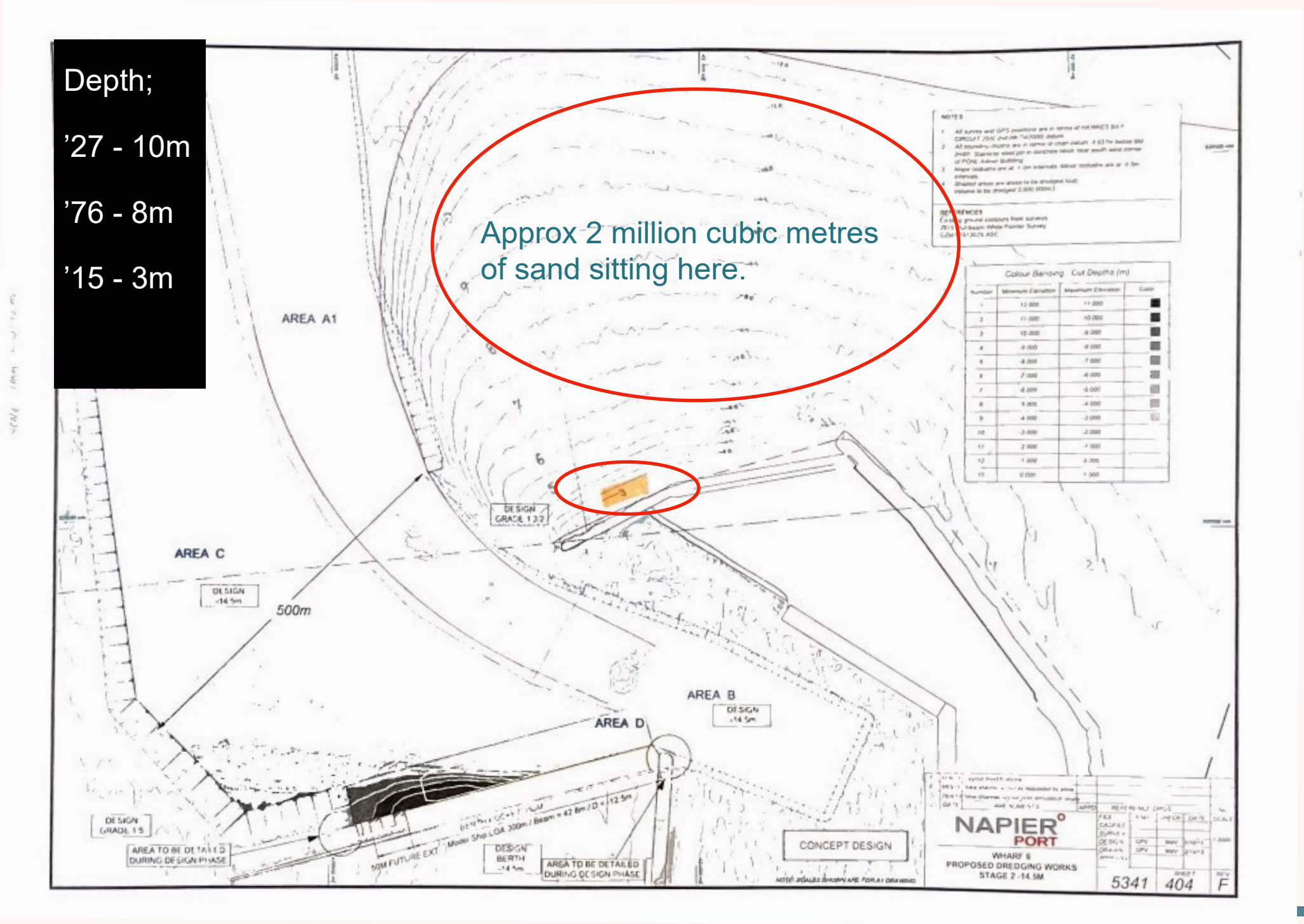
Senegal - After

TOPO MAPS

The Sand Build Up



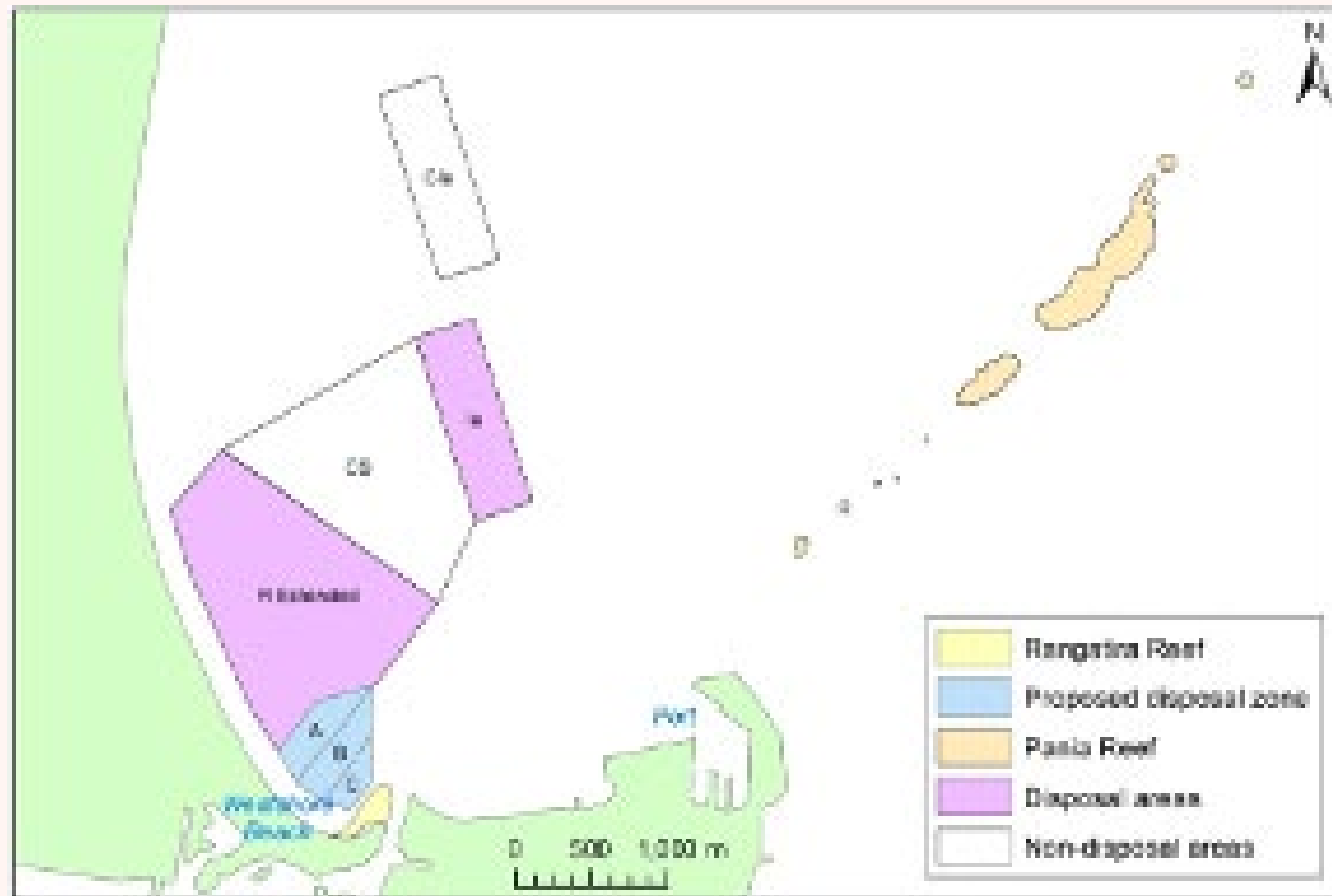
THE GUTS OF IT



THE PROPOSAL

As per HBRC Consent Application 19/20

- Replace the sand in increments
- Assess the impact on the reef
- Described as a “turbid environment” with sand continually passing through it
- Two reports - minimal impact



FOUR AREAS OF BENEFIT

“Can we have our sand back please”

1. Fix Westshore, Fix Bay View, Whirinaki.

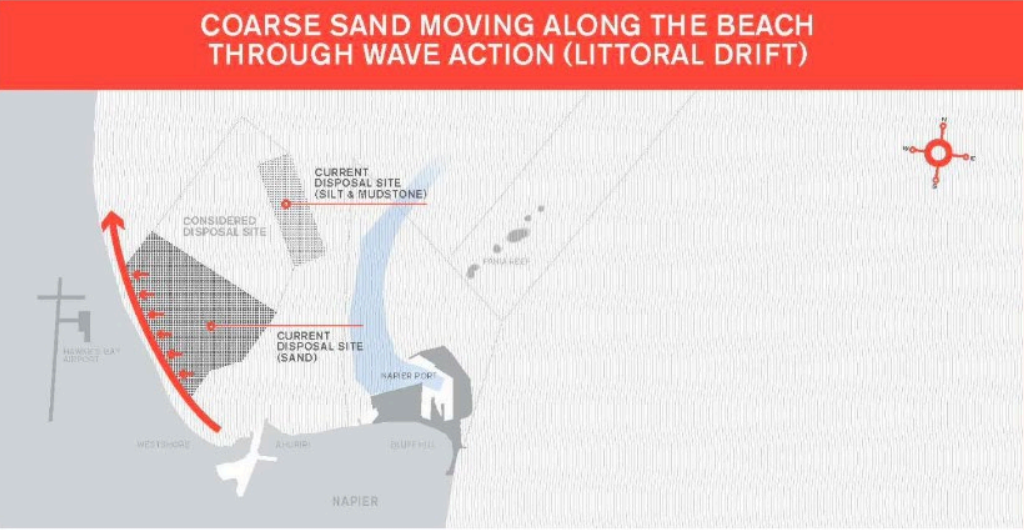
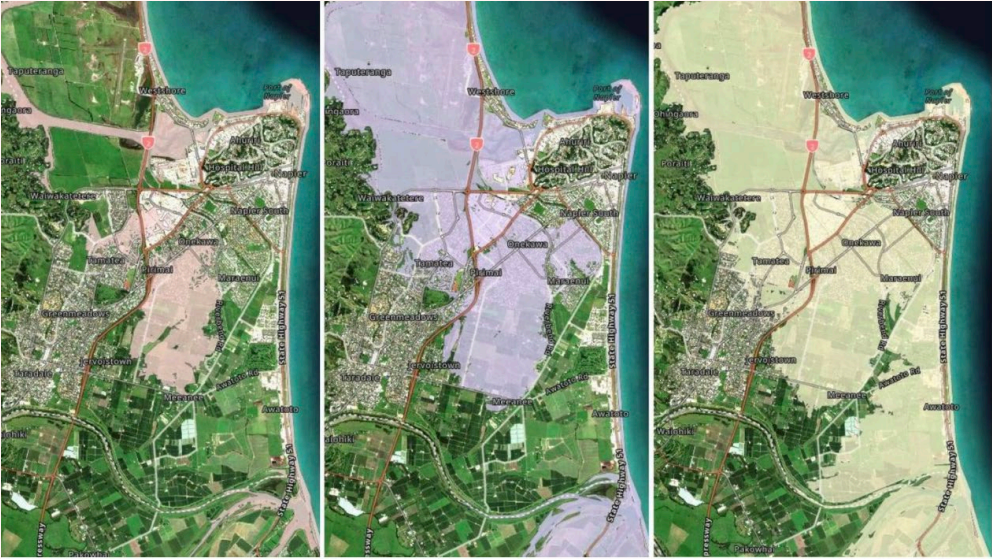


Figure 1 Napier Port Illustration of Littoral Drift

2. Environmental



3. Protect Napier (with estuary fix)



The new flood modelling risk for Napier based on current sea levels (left), a sea-level rise of 0.5m (centre), and a sea-level rise of 1m (right). Photo / Niwa

4. Amenity Value



THE SCIENCE

I can't believe that something as small scale a problem as Westshore can't be turned into a large scale opportunity.



Westshore does not have a problem with storm erosion, the problem is a lack of sand

Nature wants the sand to reach the shore

Nourishing the inshore is completely consistent with accepted principles

It can be a “sandy beach for the citizens of Napier...not to mention the even larger number of tourists... that visit the place and inject their money into the economy every year



NCC ASSISTANCE (?)

- Engagement
- Other?



THANK YOU

