



ORDINARY MEETING OF COUNCIL

Open Minutes Attachments

Meeting Date: Commencing on: Wednesday 27 May 2026; and
Reconvened on:
Thursday, 28 May 2026

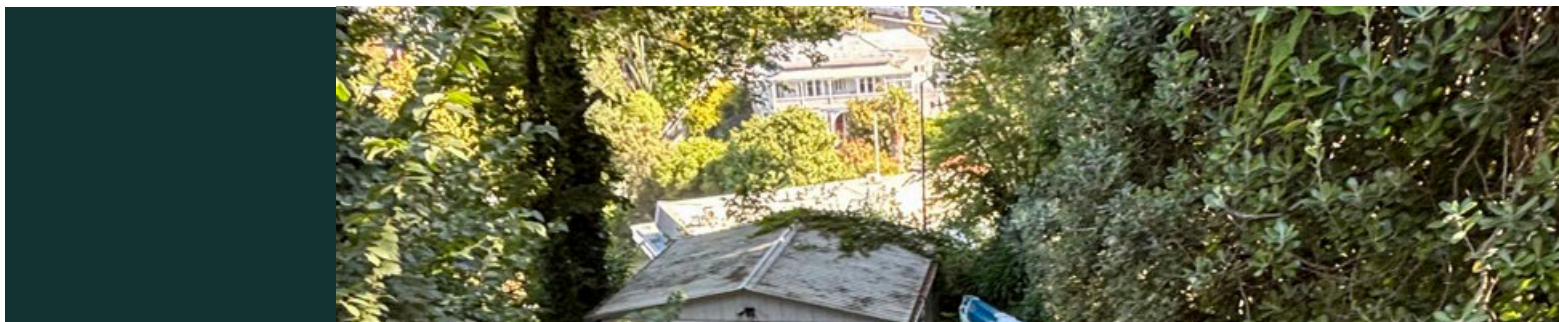
Time: 9.30am – 2.45pm
9.30 am – 1.10pm

Venue: The Ocean Suite
East Pier Hotel
50 Nelson Quay
Ahuriri

TABLE OF CONTENTS

Item 1	Submissions on the Annual Plan 2026/27
Attachment 1	Lewis Willoughby #155.....2
Attachment 2	Angie Denby - Ahuriri Estuary Protection Society #47) 17
Attachment 3	Angie Denby, AEP circulated info30
Attachment 4	Lynne Anderson - Save the Dotterels #23531
Attachment 5	Sport Hawke's Bay #24653
Attachment 6	Maxine Boag #318.....60
Attachment 7	Maxine Boag #318 - information circulated at the meeting.....70
Attachment 8	Mark Cleary - Homeless Shelter #32674
Attachment 9	Mark Clearly - Pilot City Trust.....82
Attachment 10	Catriona Eagles - Unison Limited #304.....92
Attachment 11	Tony Cunningham - Woolworks #30395
Attachment 12	Glenn Lucas, HB Regional Sports Park 114
Attachment 13	Additional Informaiton Animal Shelter 117

ONSLOW TO BREWSTER STEPS



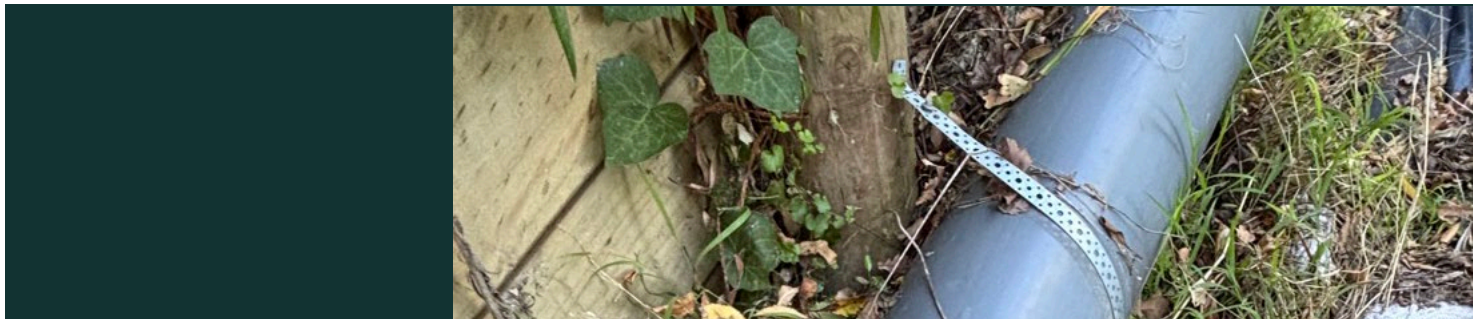


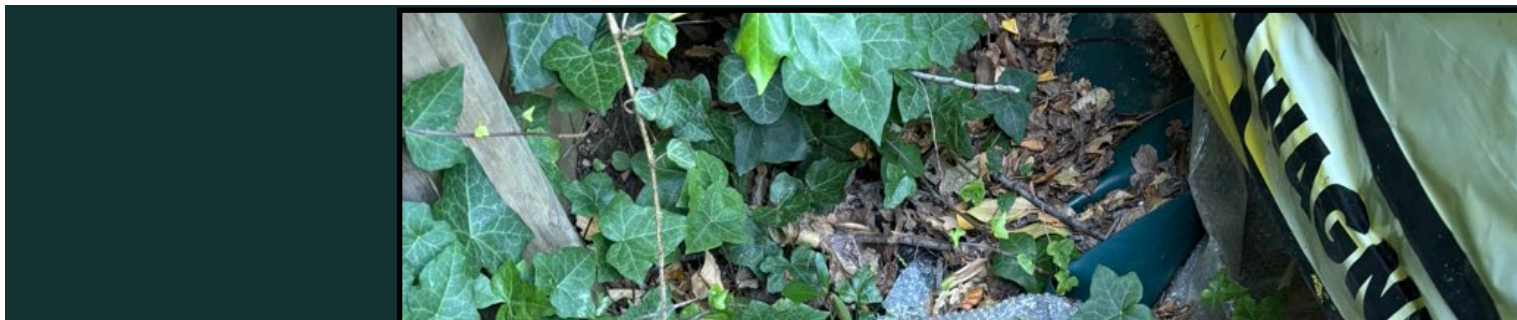


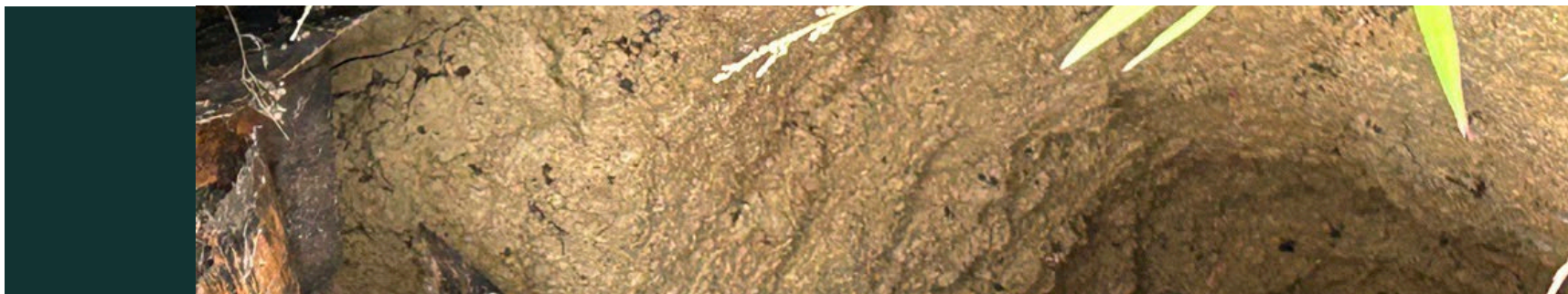


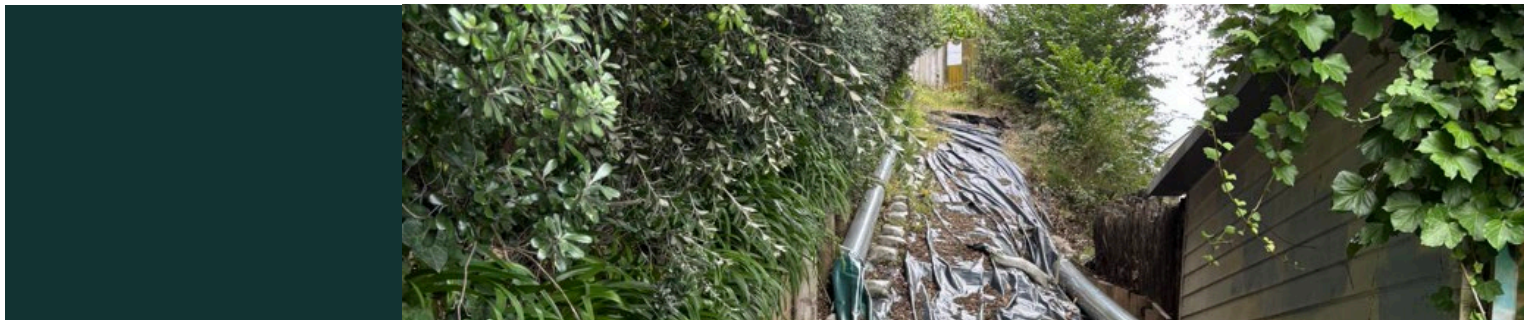
Onslow Steps Replacement Project Jan 2023

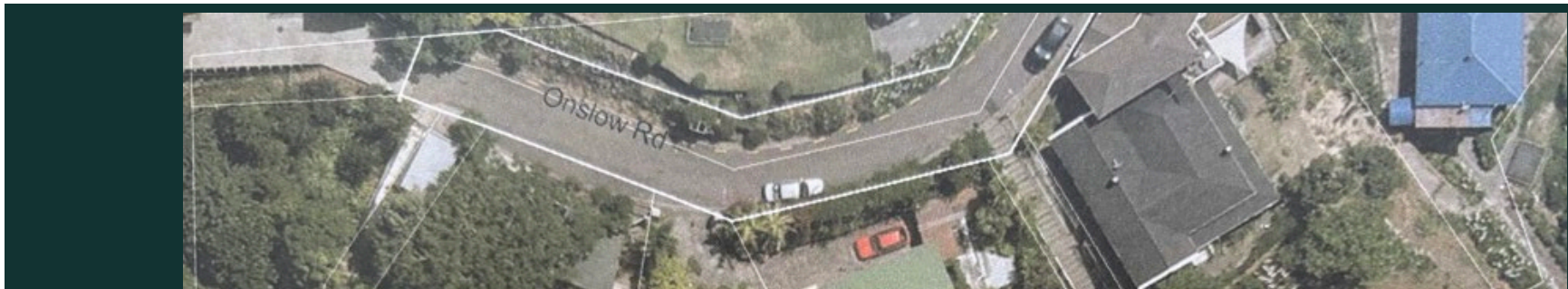












Remediation of the Site

Community Value

Reconstruction of the Steps



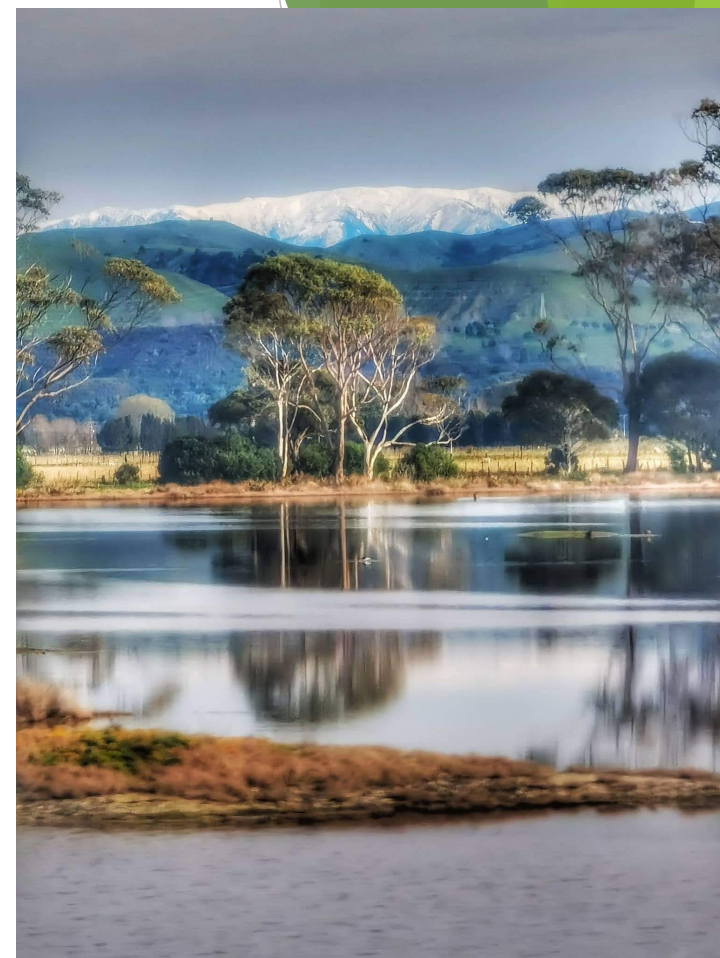


Ahuriri Estuary Protection Society Inc. 1981-2026

“Submission to NCC 2026 Annual Plan”

Presentation at Hearing 27 May 2026

East Pier, Ahuriri





What We Do

Over 300 paid members
and supporters on mailing list

- Monthly Litter clean-ups
- Protection of nesting native birds
- Study/Protection of 'at-risk' native plants
- Predator Control on Humber St Walkway area off Thames/Tyne waterway
- Public Education events
 - Welcome and Farewell the Godwits, schools' visits, talks to community groups
 - Winter Speakers Event
 - Summer Picnic with Speaker

Submissions to Councils and DOC



Networking and collaborating with:

- Local Councils- NCC, HBRC, HDC
- Mana Ahuriri Trust
- Te Komiti Muriwai o te Whanga
- DOC
- Ahuriri Tributaries Catchment Group
- Biodiversity Hawke's Bay
- Forest & Bird
- EIT Environmental Management Degree
- 'Towards Predator-Free HB'
- Hawkes Bay Airport
- NZTA
- The Pā Consultancy





Status of Ahuriri Estuary

- Nationally Significant Wildlife Refuge (NCC 2023)
- Significant Natural Area (NCC 2020)
- NCC District Plan 2020, introducing Stormwater By-Law, first prosecution in NZ
- Significant Conservation Area – HBRC Coastal Environmental Plan (2014)
- Wetland of Ecological and Representative Importance (DOC. 1996.)
- Site of Special Wildlife Interest (HBRC 2023)
- Site of ecological, cultural, and recreational significance (TANK 2007)
- Wetlands of National Importance to Fisheries (1987)
- Biodiversity Hot-Spot (HBRC 2018)
- **Estuaries of this type and value are rare in the lower North Island**



What Lives There?



77 species of birds

- Endemic – found only in NZ
- Native
- Migratory
- Introduced

29 species of fish

- important contribution to marine fisheries
- feeding ground, nursery or breeding ground for young, ocean-going fish
- 6 commercially valuable species are common

33 species of macroinvertebrates

- the food for the fish and birds
- includes cockles, pipis, thin wedge-shell, mud snail, whelk, crabs, chitons, barnacles, and worms



White-fronted Tern



Vairable Oyster Catcher



NZ Dotterel

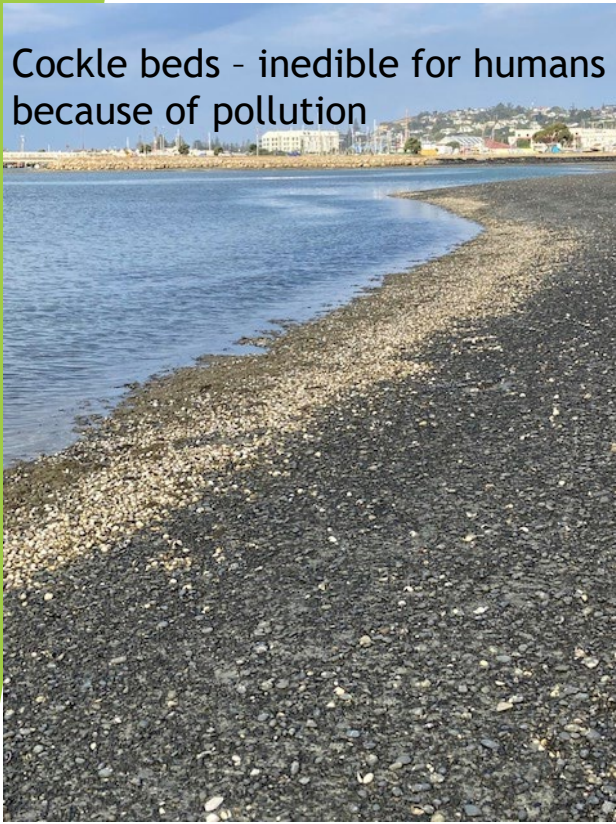


Pied Stilt (nesting)



White-faced Heron
And 2 Pied Stilts

Cockle beds - inedible for humans because of pollution



Invertebrates of Ahuriri Estuary



A perspective of the tyre wall



Damaged tyres leaching contaminants at water level
(photo 2024)

Additives used in manufacture of tyres are potentially harmful to the environment. Organohalogen compounds, acidic solutions, and the steel fibres within the tyres can leach heavy metals, e.g. Zinc, magnesium, lead, and cadmium.





Photo 2026

Auckland researchers have narrowed down the single biggest source of microplastic pollution in coastal waters.

“Tyres come out on top by a long way” Dr Samantha Ladewig, University of Auckland.

WHAT WE ARE ASKING FOR:

We note your intentions in the 2018 Ahuriri Masterplan: First 12 Projects, and are aware that the Humber St Reserve Upgrade and Pandora Road Upgrade were completed in 2023/24 years without replacing the tyre wall with an alternative 'water edge'. (p.31)

- We want further funding allocated to remove the polluting deteriorating tyres, for the sake of Health and Safety, water quality for swimming, the wildlife habitat, and importantly helping contribute to the future of collecting seafood in the area.

Questions



Ahuriri Estuary Protection Society Inc.

Key Points for Napier City Councillors – 2026 Annual Plan

Why the Ahuriri Estuary Matters

The Ahuriri Estuary is one of the most significant estuarine ecosystems in the lower North Island and has multiple recognised environmental protections and designations, including:

- Nationally Significant Wildlife Refuge (NCC 2023)
- Significant Natural Area (NCC District Plan 2020)
- Significant Conservation Area (HBRC Coastal Environment Plan)
- Wetland of Ecological and Representative Importance (DOC)
- Biodiversity Hotspot (HBRC)

Key Concern – Deteriorating Tyre Wall



Concerns include:

- Tyres are degrading and leaching contaminants into the estuary
- Potential release of heavy metals including zinc, lead, cadmium, and other pollutants
- Contribution to microplastic pollution in coastal waters
- Risks to water quality, wildlife habitat, and future seafood gathering
- Health and safety concerns at the water's edge

Request to Council.

- Allocation of additional funding in the 2026 Annual Plan
- Removal and replacement of the deteriorating tyre wall with a more environmentally appropriate edge treatment
- Long-term protection of estuary water quality, wildlife habitat, and public amenity values.

“Save the Dotterels, Hawke’s Bay”

Submission to NCC
Annual Plan, May
2026





Forest & Bird

TE REO O TE TAIAO | *Giving Nature a Voice*

Protection for Napier's Beach Habitat

Submission to NCC Annual Plan, May 2026

New Zealand's Biodiversity Crisis

- Over 4000 threatened species at risk of extinction
- Due to – invasive pests, land use, loss of habitat and climate change



That the Annual Plan needs to address urgent environmental issues with nature based solutions

Reinstate the Fire Control Bylaw with some realistic enforcement

Fire bans, at least during the nesting season, would be welcomed

For NCC to champion all controlled events relating to the foreshore

Consider designated beach areas for protection and restoration.

Work towards adopting a Beach Bylaw

A Blue Flag Beach for Napier!



We are concerned only with the protection and restoration of beach habitat. Fires reduce biodiversity on the beach and weaken the resilience of fragile coastal systems.



This is not just about 2 species

- No species exists in isolation
- Umbrella Species: - by protecting one species indirectly protects many other species in the same ecological community.
- Flagship Species: - a chosen species to raise support for biodiversity in a given place.

Banded Dotterel / Pohowera are protected under the Wildlife Act 1953



It is illegal to hunt, kill, harm or disturb

Because they are ground nesting birds, disturbing them or their nests is also an offence.

Three recent events that have lead to “Napier Beach Fire Culture”

- **Feb 2023, Cyclone Gabrielle** – threw up a lot of driftwood and ‘slash’. Burning was seen as a way to deal with this.
- **Matariki 2023** – Matariki is now an official national event - the first public Matariki celebration in Hawke’s Bay when beach fires and burning of driftwood was encouraged. **Continued in 2024 and 2025.**
- 2024 – **NCC revokes Fire Control Bylaw.** Publicised in the media – sent the message that all beach fire restrictions had been lifted.





‘Napier Beach Fire Culture’

Burn what you like, where you like, when you like and leave what you like.



Looking North from Campervan carpark





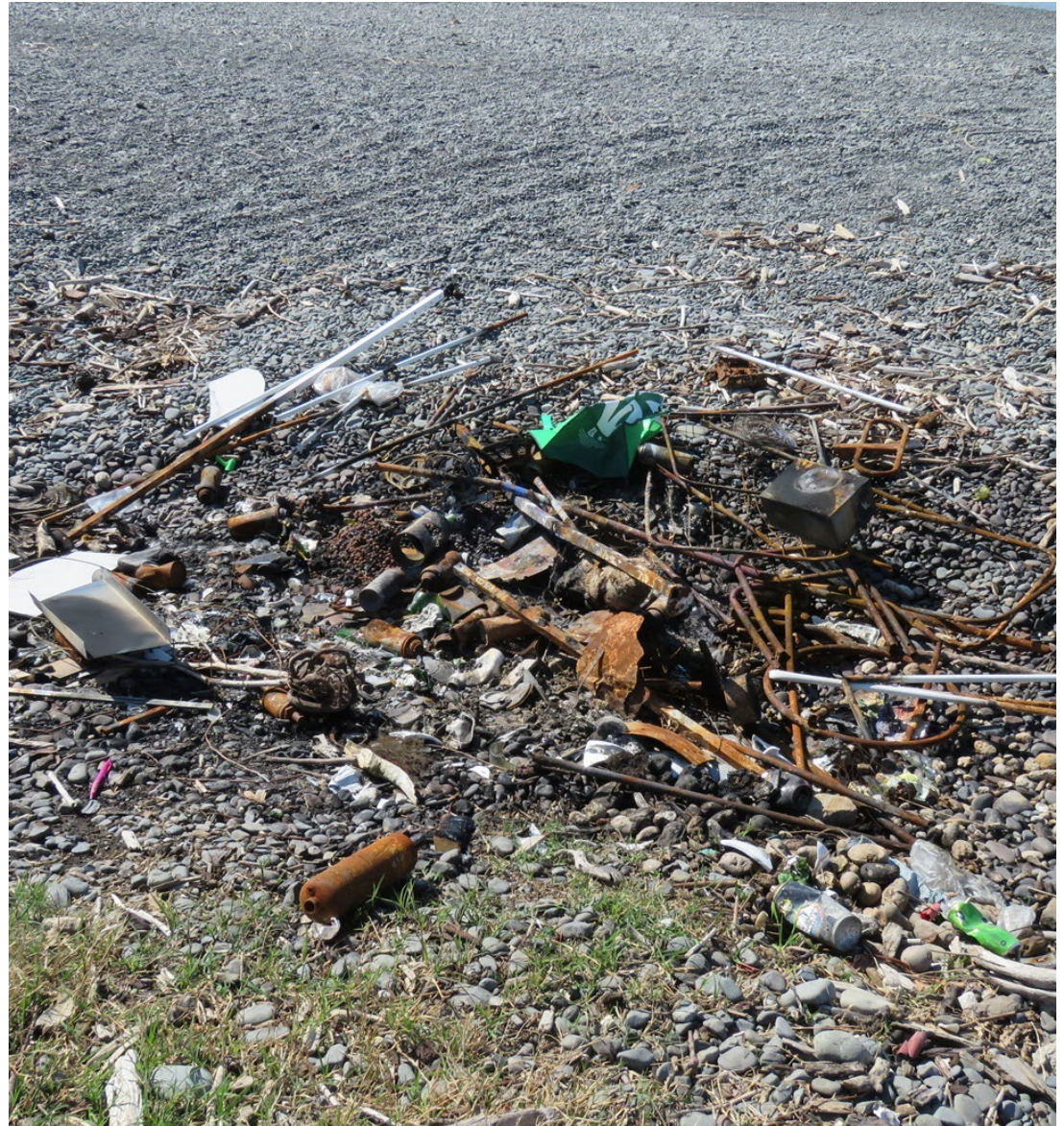
Guy Fawkes – in the middle of nesting season

- Nests are lost every Guy Fawkes

The Reserves Act 1977

- The Reserves Act: - It is an **offence** to light any fire on a reserve **unless it is in an authorised fireplace under the Reserves Act 1977.**
- **NCC website - Fire Rules and Restrictions:**

Every person commits an offence against this Act who, without being authorised, lights any fire on a reserve except in a fireplace in any camping ground or picnic place.












Consider designated beach areas for special protection (no fires) and restoration -

- **The first SIVH beach areas** –the entire Westshore Bay View dotterel monitoring area i.e. all the beach area adjacent to the pathway that goes from the end of the Esplanade at the Westshore end and the end of Ferguson Street at the Bay View end.
- **The second SIVH area** –the far end of Awatoto Beach from the Beach Domain carpark going south to the next carpark.
- **A 'Wildlife Refuge' / 'Beach Reserve'** or The area of high shingle beach adjacent to and between the Spirit of Napier and the piles of gravel to the south – about 300m.

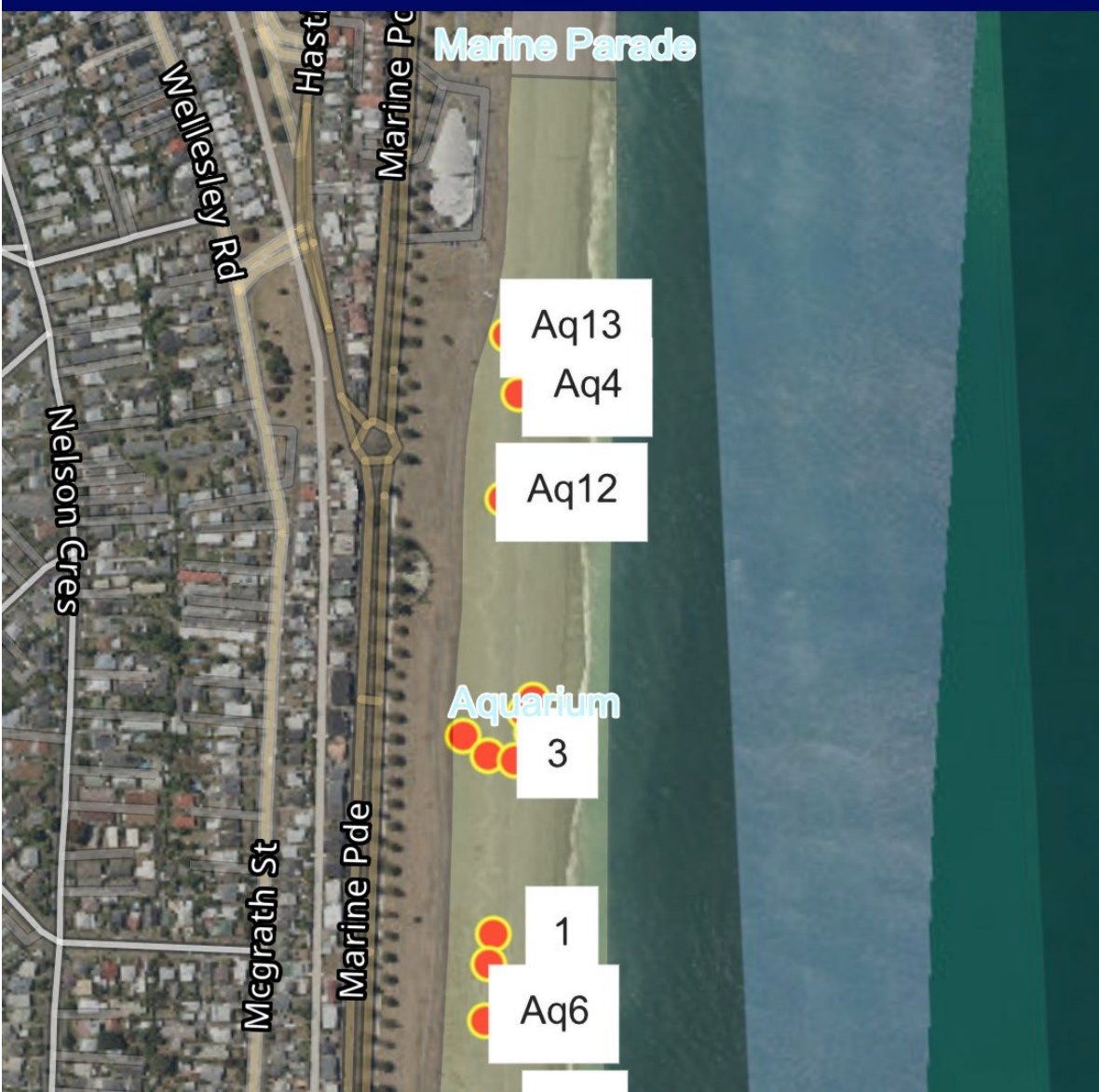
A 'Wildlife Refuge' / 'Beach Reserve' on Marine Parade –

The area of high
shingle beach
adjacent to and
between the Spirit of
Napier and the piles
of gravel to the south
– about 300m

-  Restoration of the area – reintroduction of driftwood, plant suitable natives towards grassed area.
-  No fires, vehicles, dogs. No people during nesting season.
-  Roped off – at least during nesting season August to February
-  Webcam on a dotterel nest? Birdcam
-  Quality educational signage – QR codes
-  Tourism!?!
-  Dotterel group would look to fund this



Looking South from the Aquarium









A “Blue Flag” beach for Napier?

- Blue Flag beaches are an internationally recognized certification awarded to coastal sites meeting standards for water quality, safety, environmental education, and sustainability.
- Aotearoa has NO Blue Flag Beaches
- Maybe Napier could be a first??



A common merganser mother nicknamed Janina leads her ducklings from Lazienkowski Park in central Warsaw towards the Vistula River under the watchful eyes of volunteers and city parks department staff.

Photo / Wojtek Radwanski, AFP



Traffic stops to help wild ducks cross busy road

Waddling across a Warsaw expressway, a brood of wild sea ducks brought traffic to a halt as volunteers held motorists at bay – an annual ritual to protect the bustling Polish capital's famous ducklings.

Every spring, dozens of days-old ducklings must make the risky trek from a centrally located park where they hatch to the Vistula river.

Local volunteers are mobilised to help ensure their safe passage, scrambling in high-vis vests to stop cars and shepherd the birds across one of Warsaw's busiest roads.

Waddling through the city of 1.8 million people, the groups of mergansers – fish-eating sea ducks – are led by their silver-feathered mothers, with their distinctive brown head crests.

"We call mergansers ambassadors of Warsaw's wildlife – or our celebrities," said Barbara Rozalska from the city parks department.

She was speaking over the rumble of the six-lane expressway – "one of the biggest threats" for the wild birds on their 1km journey.

Rozalska is in charge of coordinating the volunteers, who, through April and May, monitor the park and tree cavities where ducks lay their eggs and the possible routes they may take towards the river.

Around 30 people – trained by the city's ornithologist – take turns to stay alert for any sighting of the mergansers.

"It's a bit like being on call at the accident and emergency department – you get a call and you have to go, no matter if it's at dawn or in the afternoon," Rozalska said.

The array of threats is not limited to road traffic.

"There are seagulls and crows, which can snatch a chick that gets away from its mother for a moment. There are also predatory fish that can drag a chick underwater," she said.

One of the first merganser mums to cross this season took almost 24 hours to make it from the park to the river, testing the patience of the volunteers monitoring their every step and stumble.

That included the 11 hours the birds spent nestled in the roadside greenery, waiting for their moment.

Daria Grzesiek, 38, on duty, called it a "very difficult day" for her team.

"But once she set off and began making her way towards the Vistula... the fatigue was gone. There was only the satisfaction of having successfully guided her safely along the way," she said.

The volunteers' job involves asking passersby to keep their distance and put their dogs on a leash.

They also take on the task of explaining to drivers why the traffic needs to be stopped – normally only for a few minutes.

As their efforts have gained traction and the birds have shot to local fame, there is more understanding among those sat behind the wheel, Grzesiek said.

One person, she recounted, "was getting upset that we stopped traffic".

But "the other drivers simply explained to him that he should calm down – because mergansers are coming".

A Cat Management Act – and Review of Animal Control Bylaw

- Last season in the Bay View / Westshore monitoring area 4 different cats were identified predated nests – 3 of these were domestic.
- 18 out of 42 nests were lost due to cats
- Basic control such as compulsory microchipping and desexing would go a long way to encourage responsible cat ownership.
- Cat control is PRO cat – not anti cat





Sport Hawke's Bay Submission

Napier City Council Annual Plan 2026/27





Strong Alignment with Council Direction

Strategic Partnership

Sport Hawke's Bay aligns with Council's strategic goals, supporting core services and financial sustainability.

Supporting Community Wellbeing

Play, active recreation and sport promote 'spaces and places for all,' enhancing public investment value.

Collaboration

Ongoing collaboration on aquatic and recreational infrastructure fosters a solutions-focused approach.

Maximising Investment Impact

Existing parks and reserves deliver strong value, and Sport Hawke's Bay enhances this impact further.



Why Play, Active Recreation and Sport Matter

Health and Wellbeing Benefits

Active recreation supports physical and mental health, reducing chronic diseases and improving quality of life.

Strengthening Social Cohesion

Recreation creates inclusive, safe spaces fostering community connection and resilience.

Economic and Preventative Value

Investing in sport reduces future healthcare and social service costs, enhancing long-term affordability.

Alignment with Council Priorities

Recreation investment supports broader goals like resilience and community wellbeing for Napier's future.



Key Opportunity: Cycling Investment

Multifaceted Benefits of Cycling

Cycling delivers transport, health, safety, and environmental benefits, making it a strategic investment opportunity.

Education and Skills Development

Expanding cycle skills education builds confidence and safety across all age groups for effective use of cycleways.

Integrated and Sustainable Approach

Aligning cycling initiatives with road safety and national education programs ensures effective and sustainable outcomes.

Environmental and Social Equity Impact

Cycling reduces emissions, improves air quality, and offers equitable transport for diverse communities.



Key Opportunity: Active Ageing

Community-based Physical Activity

Active 4 Life provides accessible physical activity programs using local halls, parks, and shared spaces for older adults.

Health and Independence Benefits

Regular physical activity reduces falls, improves mental health, and delays loss of independence among older adults.

Social Inclusion and Connection

The program combats social isolation by fostering connections and encouraging participation among older residents.

Cost-effective Preventative Investment

Active 4 Life reduces long-term health and social service demand, supporting wellbeing and financial sustainability.



Value for Council

Smart Targeted Investments

Focus on smarter, targeted investments to maximize returns on existing infrastructure and programs without increasing financial pressures.

Prevention-Focused Initiatives

Prevention approaches like cycling education and active ageing reduce demand on health systems and improve community wellbeing.

Leveraging Existing Assets

Utilize parks, reserves, and community facilities fully to enhance value and community engagement without extra costs.

Partnership and Collaboration

Collaboration with trusted partners ensures effective delivery and supports shared goals for sustainable community development.

Thank You

Sue Smith
General Manager
sues@sporthb.net.nz



Ryan Hambleton
Chief Executive
ryanh@sporthb.net.nz



Te Pihinga

Te Pihinga (a new horizon)
an urban redevelopment project
focussed on growing economic and
social prosperity in Maraenui.



History

- Community centre consulted on and included in 2018-2028 LTP
- Full engagement after that – community wide and with a targeted group



Concept plan: Community Hub the next step after Splash Pad and BBQ area built in Shopping Centre

Concept Plan – Community Space





Splash pad completed

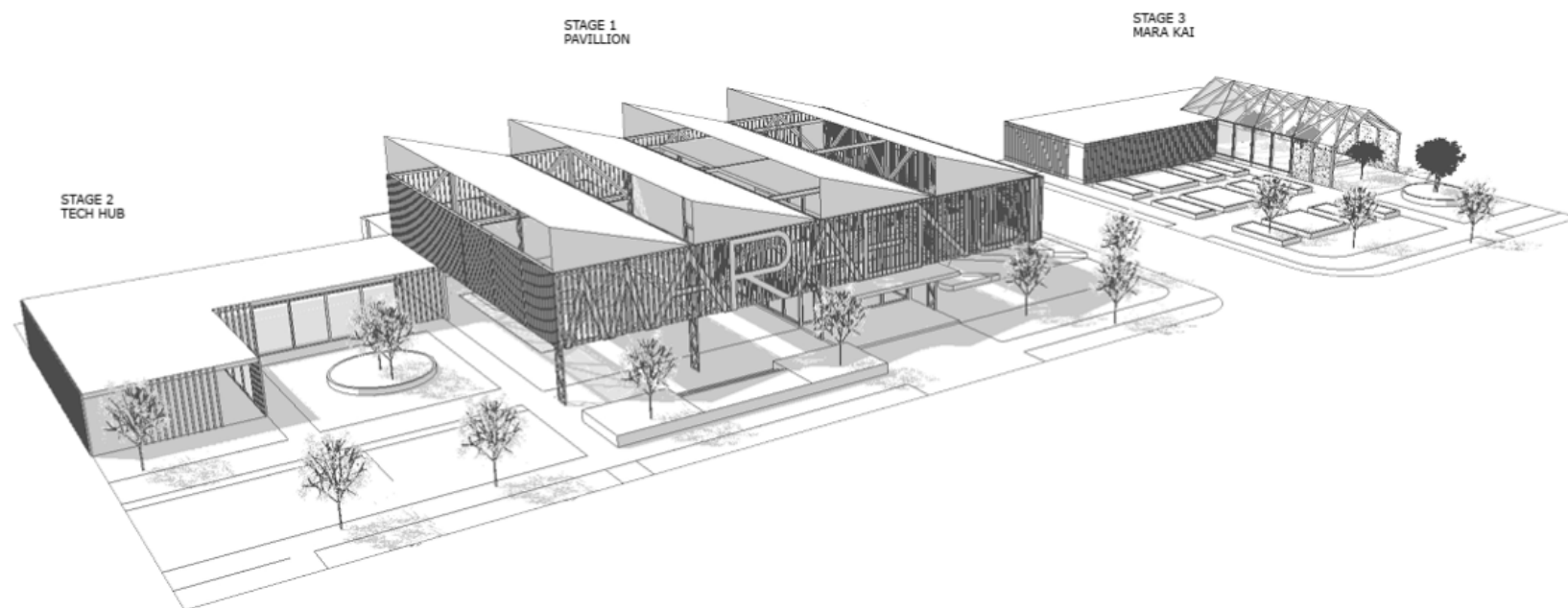


Council's intention – LTP 2021-31

- “The requirement for a community hub (in Maraenui) has been established through a number of processes including a CPTED (Crime Prevention through Environmental Design) and countless consultation processes.”
- **“If we don’t move ahead, we would need to find other ways to meet the growing social needs of our community”**

2022 – Council’s commitment

- “Te Pihinga – construction will begin in 2023, pending receipt of a feasibility study, additional consultation confirming the need and other details”
- Further partnership funding sought – eg Provincial Projects Fund from central govt



Why was it not built as planned?

Change in Council priorities

Cyclone Gabrielle

Capital funding constraints

*Does the
community
want it
now?*

Yes – 1005
signatures
supporting
Te Pihinga

“To help our community thrive”

“Vital for community connection and well-being”

“It will bring us together more”

“A great place for the community to come together and grow”

“It will have a positive and lasting effect on the community”

Next Steps



ENGAGE THE COMMUNITY
IN RESPONDING TO THE
HALLS REVIEW



INVESTIGATE
PARTNERSHIPS



KEEP TALKING ABOUT TE
PIHINGA!



say it!

TE PIHINGA

Te Pihinga has been years in the making. From around 2013, a number of state houses were removed from Maraenui, creating large parcels of unused land. Since then, we have been working with appropriate agencies to come up with an urban development plan focusing on growing economic and social prosperity in the area.

Changes have already started to happen with developers building new houses with more planned. To support this growth and to create positive opportunities for whānau development, particularly for rangatahi, we have worked with the community and developed a concept for a new community facility (Te Pihinga).

The facility provides a flexible environment that can respond to changing needs while recognising the community's identity and values. With a focus on employment, training and entrepreneurship it will provide facilities that grow talent and enable the community to thrive.

The space will host programmes and provide tools that will challenge people to reach their potential through a range of activities, attracting people from around the city.

A key focus for the construction of the facility will be to create jobs and training opportunities for locals. This approach dials up the economic and social benefits of the project straight away, before the doors are even open. Known as 'social procurement', it is an approach we want to take with future projects across Council.

We see this project as an investment in our long-term future, creating positive opportunities for our young people and others in the community who need support, and creating a level playing field for all.

This project was included in our last Long Term Plan, but recognising we have some work to do on getting the basics right in our city (e.g. water services), we're now proposing to push the timing out a couple of years. While we wait, there are preparations to undertake (site investigations and detailed designs). We aim to start construction in 2023.

This approach also gives us time to firm up funding from other partners. While initial discussions with potential funders have been positive, as a key community project the bulk of the funding is proposed to come from Council. We have increased the value of our proposed contribution in order to allow the main building to proceed. Funding from external sources will allow additional phases to be brought forward.

In the meantime, we're installing a splash pad and picnic/bbq area across the road from the proposed community facility, which falls under the wider urban development plan.



Does this matter to you?

We want to know your thoughts on the three Te Pihinga options below. Tell us at sayitnapier.nz/ltp or use the submission form included.

say it!

YOUR SAY ON NAPIER'S FUTURE

OPTION ONE

Do it now
(2021-2023)

We would spend the rest of 2021 finishing the design, working up the operating model and completing tendering processes.

These timeframes would challenge our ability to achieve added benefits such as social procurement (jobs and training for locals) and environmental outcomes (smart building practice etc).



OPTION TWO

Do it a bit later
(2023-2025)

With this timeframe, we would be able to develop our design, explore options for the operating model, confirm partnerships and other funding sources, and develop a social procurement plan to achieve jobs and training for locals. Although we're still exploring how the facility could be best run, we've already set aside budget for some of its operating costs when it will open in 2025/26.



OPTION THREE

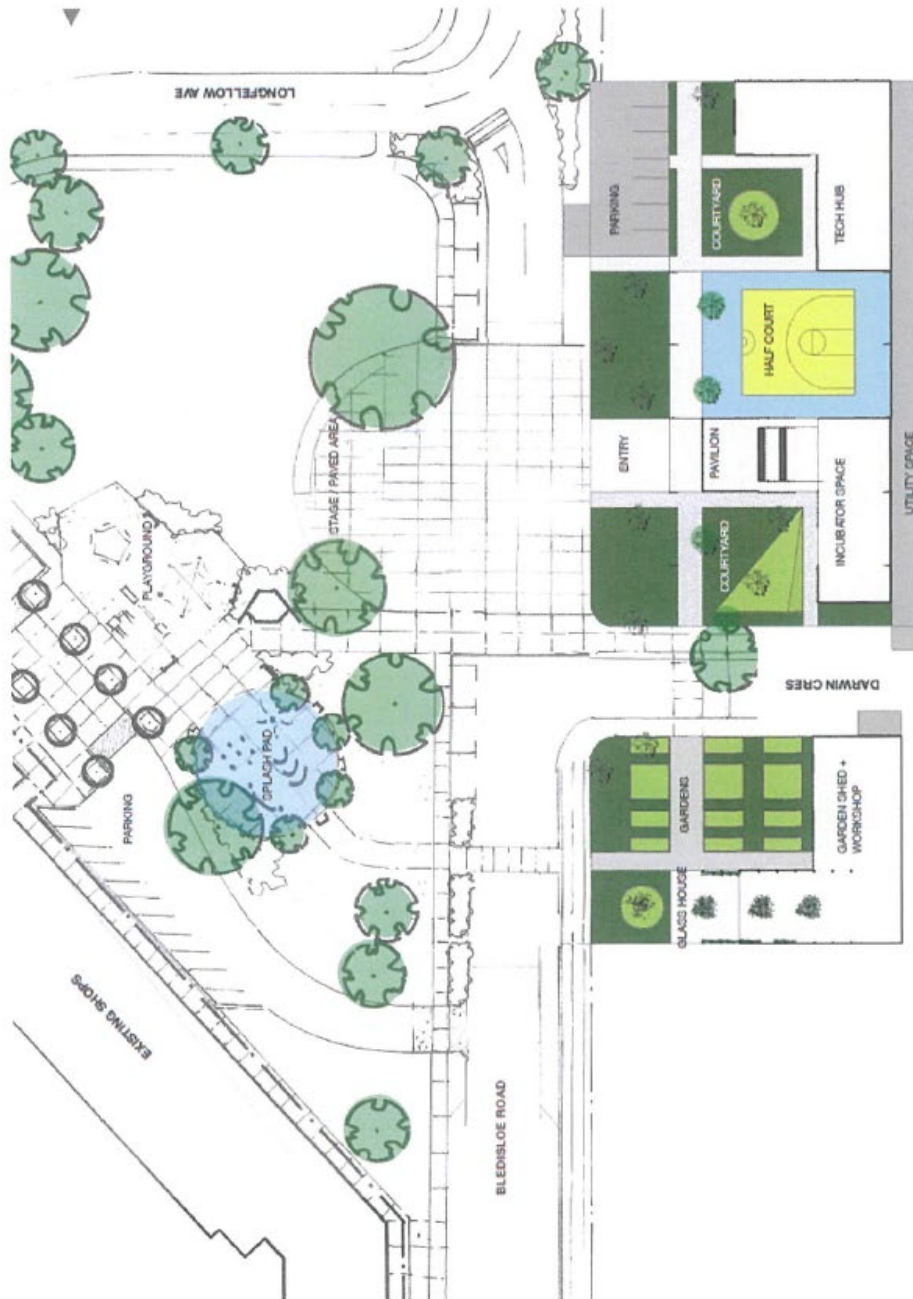
Don't do it

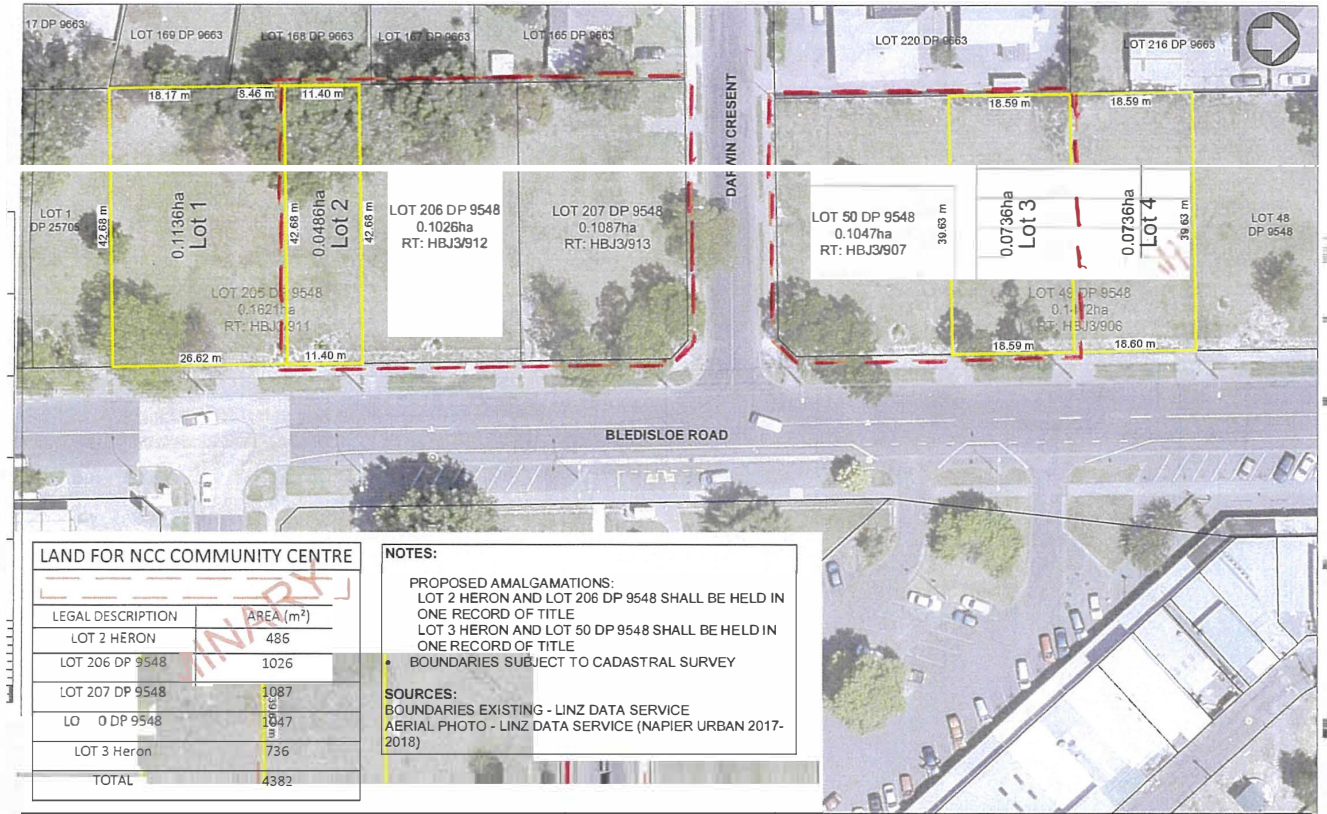
As a Council, we know we need to fund a range of programmes and projects to help address growing social issues that impact all of Ahuriri.

The requirement for a community facility has been established through a number of processes including a CPTED assessment (Crime Prevention through Environmental Design) and countless consultation processes. If we don't move ahead, we would need to find other ways to meet the growing social needs of our community.



Concept Plan – Community Space





LAND FOR NCC COMMUNITY CENTRE	
LEGAL DESCRIPTION	AREA (m ²)
LOT 2 HERON	486
LOT 206 DP 9548	1026
LOT 207 DP 9548	1087
LO 0 DP 9548	1947
LOT 3 Heron	736
TOTAL	4382

NOTES:

PROPOSED AMALGAMATIONS:
 LOT 2 HERON AND LOT 206 DP 9548 SHALL BE HELD IN ONE RECORD OF TITLE
 LOT 3 HERON AND LOT 50 DP 9548 SHALL BE HELD IN ONE RECORD OF TITLE

- BOUNDARIES SUBJECT TO CADASTRAL SURVEY

SOURCES:
 BOUNDARIES EXISTING - LINZ DATA SERVICE
 AERIAL PHOTO - LINZ DATA SERVICE (NAPIER URBAN 2017-2018)



Kāinga Ora
 Housing and Community Development
 BOUNDARY RELOCATION PLAN

AS3
 KAIANGA ORA NAPIER DEVELOPMENTS
 BLEDISLOE ROAD, NAPIER
 N:HPM06.00 / PMEXE
 THE SCHEME PLAN - LOTS 50, 207, 206 DP 9548
 AND PROPOSED SUBDIVISION OF LOTS 48 & 205 DP 9548
 N:HPM06.00 HNZ
 REVA





Safer Nights. Stronger Lives. Safer City.

'A safe place to rest. A proven pathway forward.'

The Reality in Napier

In 2024, three people died on the streets of Napier.

For those experiencing chronic homelessness, daily life means unsafe sleeping conditions, untreated physical and mental health challenges, disconnection from whānau and support services and constant risk of harm.

Without a safe place to rest, recovery is almost impossible.

Āhuru Mōwai – A Different Approach

Āhuru Mōwai provides a safe, respectful, drug and alcohol-free overnight shelter for men experiencing chronic homelessness.

Operating 7 nights a week from 370 Hastings Street, the service offers:

- Private rooms for 8–10 residents
- A calm, stable environment
- A model grounded in:
 - Manaakitanga — care and respect
 - Whanaungatanga — connection and belonging
 - Mana Motuhake — independence and self-determination

This is not just a bed for the night.

It is a pathway back to dignity, stability, and connection.

“It was unsafe on the streets. I am safer now.”

Why This Matters to Our Community

Supporting Āhuru Mōwai delivers real, local impact:

- Reduces pressure on emergency and public services
- Improves safety and wellbeing in our city
- Supports long-term pathways out of homelessness
- Strengthens a coordinated, community-led response

This is not charity. This is prevention.

A Model That Works

Since operation commenced July 2025

29 men supported

13 moved into housing

100% occupancy from week 9

Fiscally responsible
~\$35,000/month, lean operation

The good news:

WIT is in promising negotiations with two government agencies that will ensure Āhuru Mōwai stays open for at least the next 12 months.

What do we want?

1. An ongoing partnership with the Council building on this very successful pilot to significantly reduce homelessness.
 - a) An ongoing commitment to enable day-time activities for Āhuru Mōwai and those still rough sleeping. Including Breakfast and garden activities.
 - b) Find locker storage for those still rough sleeping freeing the streets of shopping trolley and baggage.
 - c) In collaboration with Orange Sky laundry find a way of accessing the Marine Parade public showers for two sessions a week.
 - d) Collaborate to develop a regional homeless strategy.



Napier Pilot City Trust

Nā Kaiārahi Whakawhirinaki - Whakawhanake o te tāone o Ahuriri

Advocating for equity, justice and unity in Ahuriri Napier since 1986

Whai wāhi ki te aki i te whakakotahitanga o ngā take o te hāpori



Napier Pilot City Trust

Nā Kaiārahi Whakawhirinaki - Whakawhanake o te tāone o Ahuriri

Unity Awards 2011





Napier Pilot City Trust

Nā Kaiārahi Whakawhirinaki - Whakawhanake o te tāone o Ahuriri

Unity Awards 2026





Napier Pilot City Trust

Nā Kaiārahi Whakawhirinaki - Whakawhanake o te tāone o Ahuriri





Napier Pilot City Trust

Nā Kaiārahi Whakawhirinaki - Whakawhanake o te tāone o Ahuriri

Here to advocate for:

1. The building of Te Pihinga Community Hub in Maraenui
2. Ongoing support for Āhuru Mōwai

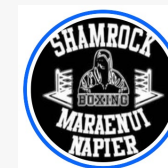


Napier Pilot City Trust

Nā Kaiārahi Whakawhirinaki - Whakawhanake o te tāone o Ahuriri

Vibrant Maraenui Napier's most connected Community

- Tū Tangata Maraenui
- Shamrock Boxing Academy
- Meke Pod
- Te Hiwa a Māhaki
- The Banners
- Christmas in Maraenui





Napier Pilot City Trust

Nā Kaiārahi Whakawhirinaki - Whakawhanake o te tāone o Ahuriri

Vibrant Maraenui Napier's most connected Community

- Toi Matarua
- Moko Boys
- EIT Maraenui
- Meke Foundation
- Maanawatia a Matariki ki Maraenui



THE NINE STARS OF MATARIKI

Mānawatia a Matariki ki Maraenui

Wednesday 1st of July 2026
Maraenui Shopping Centre
11am - 3pm

Karakia - Entertainment - Bouncy Castles - Hauora Checks

Proudly Sponsored by



Napier Pilot City Trust

Nā Kaiārahi Whakawhirinaki - Whakawhanake o te tāone o Ahuriri

Te Pihinga Community Hub Community is a way of the Council signalling that it values effective communities

Concept Plan – Community Space



Project: KAIANGA ORA NAPIER DEVELOPMENTS
 BLEDISLOE ROAD MARKET
 NHPM02.00 / PMEXE
 SCHEME PLAN - LOTS 50, 206, 207, 208 DP 9548
 AND PROPOSED SUBDIVISION OF LOTS 48 & 205 DP 9548
 NHPM02.00 HN2

FOR ISSUE

1 OF 1



Napier Pilot City Trust

Nā Kaiārahi Whakawhirinaki - Whakawhanake o te tāone o Ahuriri



Āhuru Mōwai a genuine pilot project



Forty years ago Dame Anne Hercus gave the Napier the title of Pilot City in recognising the innovative community development projects taking place in the City. The Pilot City Status was a message to government that the projects working in Napier were worthy of scale.

The success of the **Āhuru Mōwai project** should be celebrated and strongly supported by the Council.



Napier Pilot City Trust

Nā Kaiārahi Whakawhirinaki - Whakawhanake o te tāone o Ahuriri



Āhuru Mōwai a genuine pilot project



We urge the Council to continue to support this innovative and highly successful project by:

- Finding funding to support the Shelter Society's work particularly around finding meaningful daytime activities
- Investigate ways of providing storage for those still rough sleeping
- and work with Orange Sky to find a solution to showering barriers

SUBMISSION HEADLINE



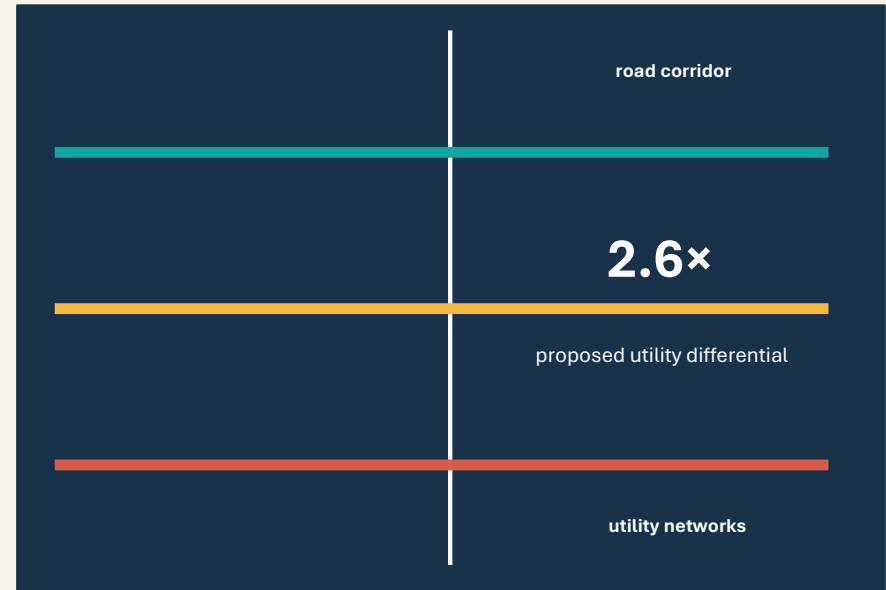
Oppose targeted transport rate on utility networks

Napier City Council proposes a new capital-value based Transportation Rate. The submission opposes applying it to electricity and other utility assets in road corridors.

Core position

The proposal may reallocate roading costs disproportionately onto utility consumers

Outcome sought: reconsider this aspect of the Annual Plan with a lower differential for utility providers or the status quo funding or use tools linked to measurable transport demand.



Fairness

Efficiency

Legality

Source: Unison & Centralines submission to Napier City Council Annual Plan 2026/27, 24 April 2026



Reasons

01

Fairness

Utility assets enable essential services; they are not road users in the same sense as traffic-generating commercial sites.

02

Economic efficiency

Direct road impacts are already internalised through CAR permits, traffic management, inspections and reinstatement obligations.

03

Legislative intent

Consideration should be given to the Utilities Access Act framework and cost requirements.

Bottom line: the rate would charge utilities beyond demonstrable transport costs.

Source: Unison & Centralines submission to Napier City Council Annual Plan 2026/27, 24 April 2026

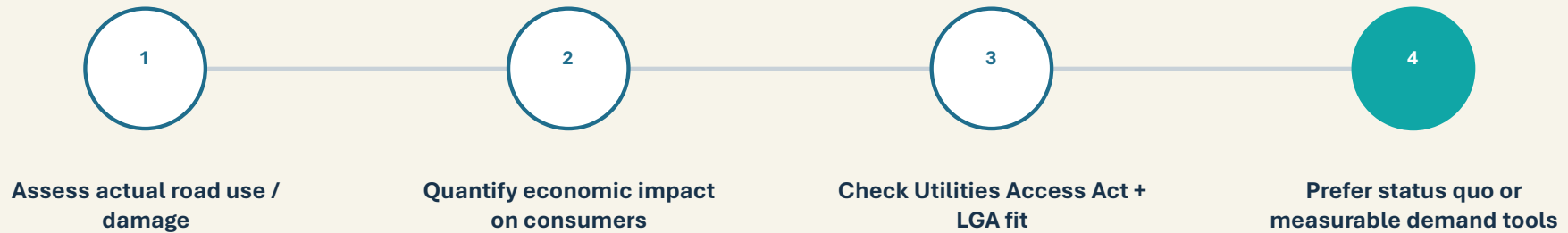
SUBMISSION ASK



What Council should do before deciding

Redesign the utility component of the Transportation Rate for Utility Providers

The submission asks Council to test the proposal against evidence of actual road use, direct costs and legal parameters before imposing a high differential on corridor-based infrastructure.



Preferred outcome: Option 2 / status quo funding via general rate on land value, exclusion of corridor assets under a CV rating approach or other tools that do not unfairly penalise utilities.

Hearing message: utility networks deliver essential services; already contribute to roading costs through established processes, extra transport charges ultimately land with Napier households and businesses.

Source: Unison & Centralines submission to Napier City Council Annual Plan 2026/27, 24 April 2026

WoolWorks New Zealand Limited Submission to Napier City Council – Annual Plan 2026/27



Tony Cunningham

27 May 2026



SCIENCE
BASED
TARGETS



New
Zealand
Farm
Assured
nzfap.com



THE
NEW ZEALAND
FERNMARK
LICENCE
PROGRAMME





22.3 million sheep

120 million kilograms wool annually

20,000 wool growers

88% of wool is exported



NZD\$393 million contribution to NZ exports 2023/24

NZ produces over 50% of the world's highest quality strong wool

NZ wool is renowned for quality, colour, and strength

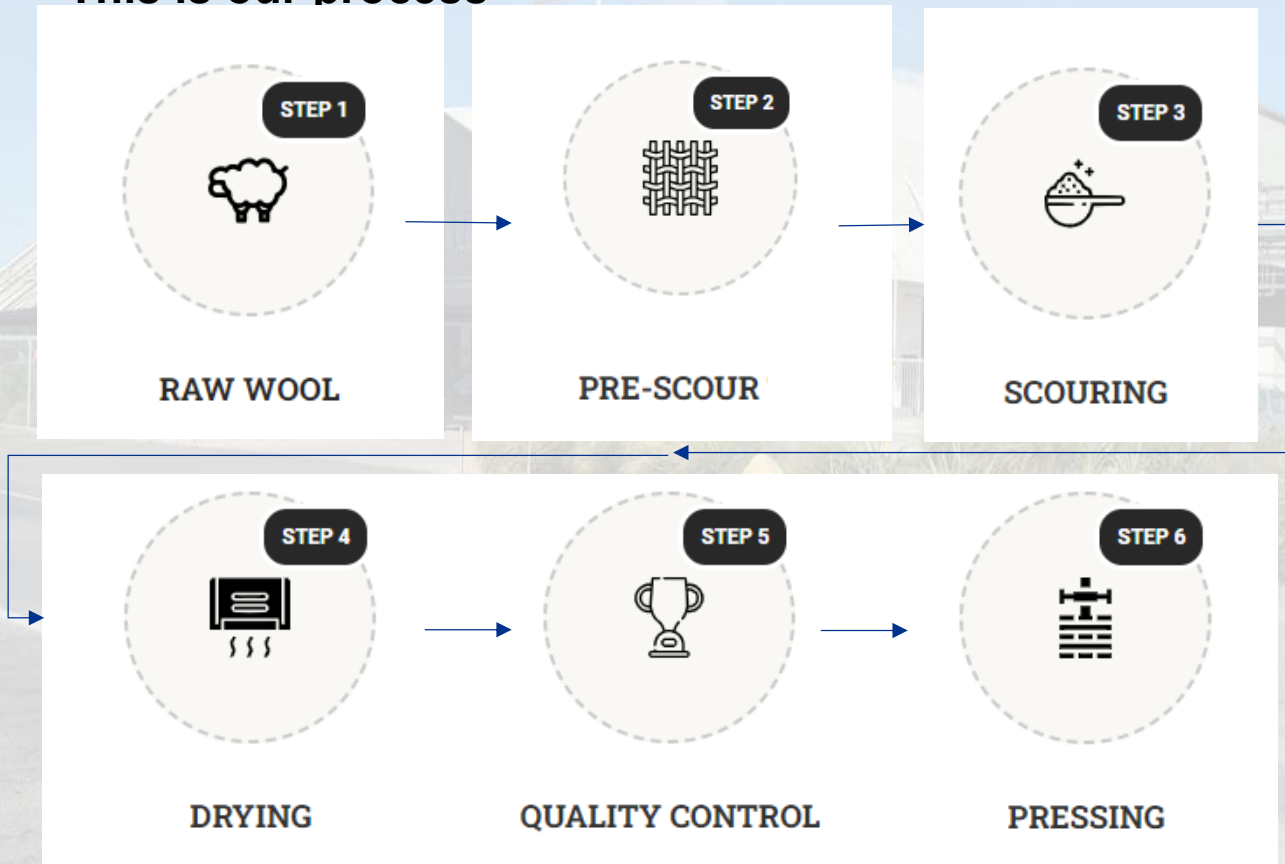
100% of NZ sheep are pasture raised and grown in harmony with nature

Scouring Process

The scouring process removes the non-wool constituents which allows the wool to be further processed in the next stage of manufacturing



This is our process



Greasy Wool (pre scour)



Clean Wool (post scour)



Woolworks

- Woolworks process 80% of the total wool production in New Zealand, approx. 100,000,000 kg of greasy wool annually.
- Woolworks is key in the New Zealand wool supply chain to the world, and has always been a key part of the NZ wool industry, employing 165 FTE across New Zealand.
- The scouring process requires high volumes of high quality water. Only certain locations are suitable for woolscouring plants. Water is integral, and discharge of wash water is critical to the process and quality of the scoured wool.
- There are already significant compliance constraints on how the plant operates, to be environmentally sound and minimise effects beyond the property boundary – all with costs.
- Advanced decarbonization programmes, sustainability and reduced greenhouse gas emissions are already in play

Local Government has an important role to play



Food processing closures and rural impacts

Mayor McGrath participated in regional discussions with the Minister of Agriculture, alongside neighbouring mayors, after announcements from **Heinz Wattie's** and **McCain Foods** about plant closures in Hawke's Bay. He described the issue as nationally significant and said it was valuable for government leaders to hear directly from local representatives about the impact on growers, jobs, and the wider community. The meeting was seen as part of a regional effort to **support the long-term future of food production in Hawke's Bay** [business.scoop.co.nz](https://www.business.scoop.co.nz).

Parliamentary review of processing sector changes

The region's mayors, including McGrath's colleagues in Hastings and Central Hawke's Bay, **welcomed a Primary Production Select Committee briefing** on the closures. They emphasised the importance of examining input costs, energy supply, and market conditions — factors affecting the viability of farming and processing. The mayors collectively encouraged a “broad approach” to ensure **growers, industry, and communities** were heard and represented [scoop.co.nz](https://www.scoop.co.nz).

Broader advocacy for rural and regional collaboration

In a joint statement responding to **local government reform proposals**, McGrath and fellow mayors expressed support for a “simpler, more effective local government model.” They said the goal was to ensure **stronger regional cooperation** and to build systems that maintain local identity while supporting economic and environmental resilience across Hawke's Bay [nzherald.co.nz](https://www.nzherald.co.nz).

Overall, while Mayor McGrath's most visible advocacy has been within Napier itself, he has also participated in regional efforts to **retain agricultural processing, protect grower livelihoods, and strengthen inter-council collaboration** across Hawke's Bay's rural and urban communities.



Submission Points

- What may seem to be a small increase per m³, is not a small increase with the discharge in the volume we produce – the proposed increase will likely add a cost of nearly \$100,000 per annum to operating costs.
- There is no simple way to incorporate this cost into the existing budgets and would result in a significant increase in costs across the process – the plant would cease to provide affordable or competitive prices and would most likely shut.
- The Council passed a bylaw which is meant to inform how tradewaste charging is implemented.
- We are trialling new technology to reduce the load in our discharge. The current blanket approach does not encourage improvements in discharge quality.
- Woolworks as a key contributor to tradewaste in the district and considers that it should be part of the conversation to determine how fees are set and should have all relevant information on the actual costs of the process the discharge is subject to.
- There should be no increase in tradewaste fees until they are set based on a reasonable process. This is key to our submission.

Strategic Asset: Wool Scouring in New Zealand

A ~\$300M backbone industry with outsized influence on a \$1B+ wool economy — and significant upside through innovation and sustainability

Regional Development

Woolworks Supports improving net returns for wool growers/ sheep farmers and rural NZ/ Iwi/ Maori interests, noting over 30% sheep and beef farms in the NI are owned/ operated by Maori interests/ shearing contractors and teams with 75% identifying as Maori

Economic Value

~\$500M annual industry (NZ wool scouring revenue) [ibisworld.com]

Processes ~80% of NZ wool clip (~100M kg annually) [beehive.govt.nz]

Core enabler of NZ's ~\$1B+ wool economy

Potential serious investment with 3 x strategic investors in new manufacturing capacity for non-woven production of wide range of wool based products

Strategic Asset for NI and wool manufacturers/ innovators

Strategic Importance

Woolworks converts raw wool into export-ready, high-value fibre

Positions NZ as **global leader in wool processing capability**

Anchors domestic value chain before export or manufacturing

Enables downstream innovation (textiles, insulation, composites)

Growth Opportunity

Demand shifting toward **sustainable, natural fibres**

Increasing global focus on **low-carbon, traceable supply chains**

Opportunity to capture **more onshore value vs raw fibre export**

Platform for **new product categories and advanced materials**



Thank you

Questions



SCIENCE
BASED
TARGETS



New
Zealand
Farm
Assured
nzfap.com

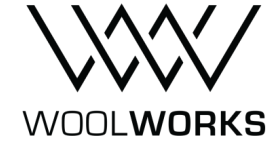


THE
NEW ZEALAND
FERNMARK
LICENCE
PROGRAMME



Environmental Sustainability

WoolWorks is committed to reducing emissions, not offsetting emissions
 We are an early adopter of green energy technology in NZ



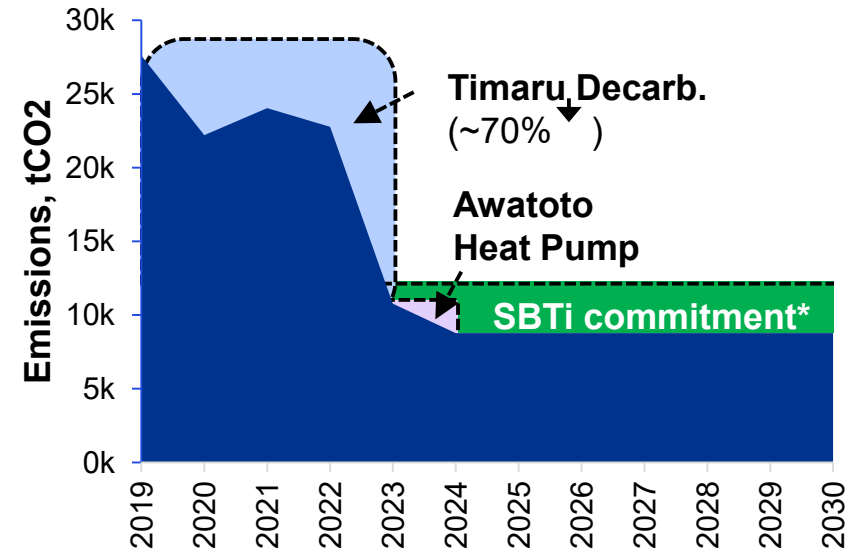
Decarbonisation Program

Project 1: Timaru Decarbonisation Project

- \$10.6M project (\$3.4M co-funding from EECA)
- 8 MW E-Boiler & 750 kW CO2 Heat Pump
- Annual emissions reduction of 12,000+ tCO2-e (approximately 70%)
- 100% renewable energy

Project 2: Awatoto Heat Pump (Phase One)

- \$2.4M project (\$455K co-funding from EECA)
- 1000 kW Hot Water Heat Pump.
- Annual emissions reduction of 1,700 tCO2-e.
- Ongoing efforts to bring about an E-Boiler replacement (phase two) to Awatoto



*In 2019, WoolWorks made a SBTi commitment to reduce emissions by 46% by 2030, which it has **already achieved**



WoolWorks leading the way in the wool industry

World-first decarbonisation of New Zealand wool scouring plant

Sustainability is in our DNA

WoolWorks has always been focused on sustainability.

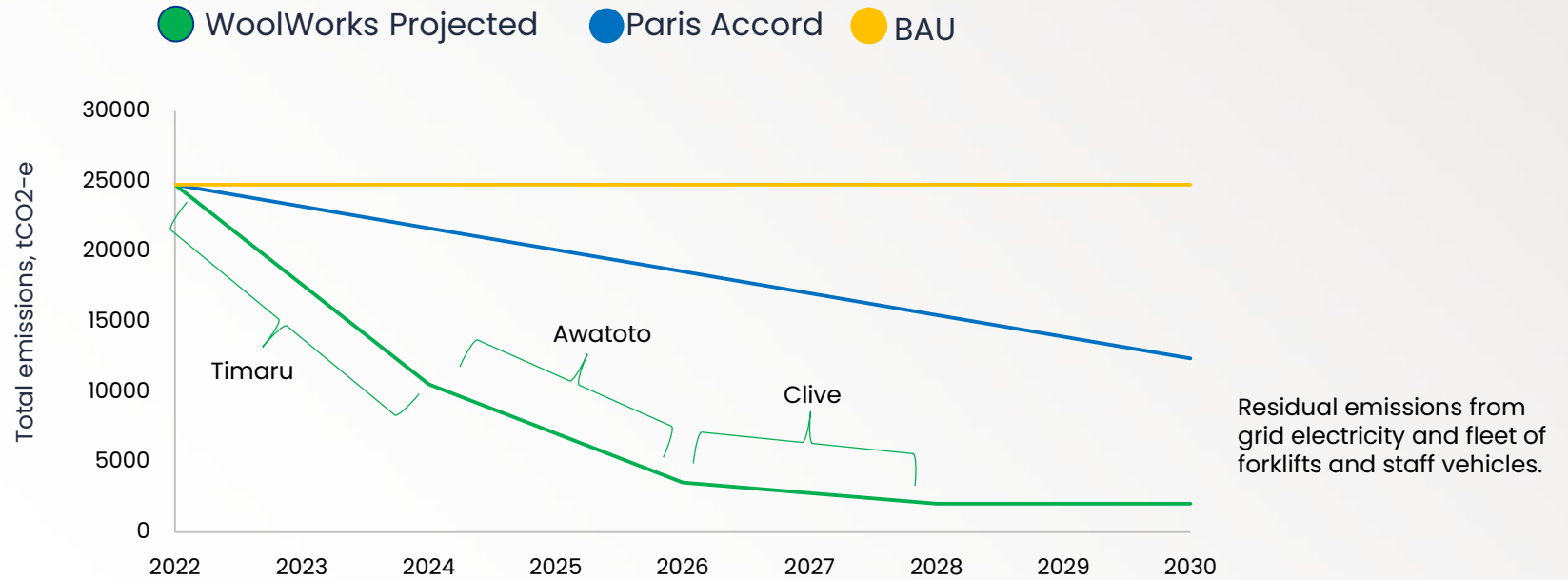
While this term is relatively new for the business, it's always been our focus.

To remain globally competitive and desired WoolWorks focuses on:

- optimising energy and water usage, heat capture & utilisation
- efficiency of operations through innovation and investment including novel scour line design with mechanical pre-treatment supporting scouring process
- minimising waste, and finding material uses for any residual matter from processing for new utility



Decarbonisation: Into the future



Projected and Business as usual scope 1, 2 & 3 emissions over the next 10 years.



Science Based Targets

SBTi represents significant opportunities for supply chain alignment through preferred supplier status



Science Based Targets initiatives (SBTi)

- Supports an ambitious decarbonization roadmap.
- Commitment to a climate-secure world.
- SBTi are aligned with the Paris Agreement.
- WorkWorks is an early adopter of SBTi. We have already achieved our ambitious SBTi CO2 target (46% reduction) 6 years earlier than required.

Why this matters?

- WoolWorks is the only wool scour in the world who has declared and achieved an SBTi target.
- Our products are supplied to world leading textile manufacturing, apparel, cosmetic, skin care and pharmaceutical companies.
- WoolWorks strongly advocates for the use of wool as a sustainable carbon fibre – a natural alternative to synthetic materials.
- Our reduction pledges are up there with international companies.

WoolWorks Credentials



SBTi committed businesses





Looking Further Ahead New Zealand Low Carbon Wool

WoolWorks will leverage its own low carbon emissions processing facilities with the low carbon wool suppliers to create a world leading early-stage differentiated wool supply chain, a first for the strong wool industry

- WoolWorks intends to be the preferred supplier of Low Carbon New Zealand Wool.
- WoolWorks only purchases electricity from 100% certified suppliers.
- WoolWorks will work with grower groups and progressive farmers that can supply wool from :
 - Low carbon, carbon neutral and carbon positive certified farms
 - Farms that have certified NZFAP Plus and/or RWS credentials
 - Certified regenerative agriculture farms



Benefits of Wool



THE CAMPAIGN FOR WOOL
Patron: The former Prince of Wales

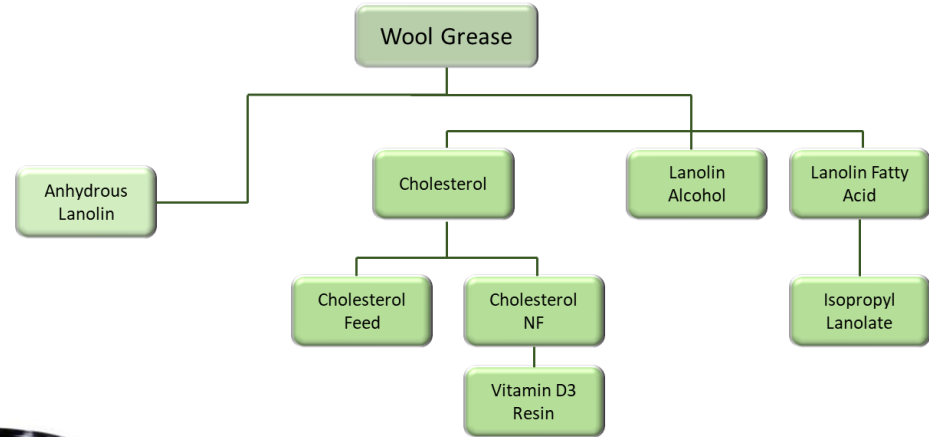


	<p>Renewable</p> <p>Wool is the ultimate renewable resource. Every year sheep grow a glorious new fleece which must be shorn for the health and hygiene of the animal.</p>		<p>Biodegradable</p> <p>At the end of its life, wool can be returned to the soil and will degrade in a few months releasing nutrients into the ecosystem.</p>		<p>Ocean safe</p> <p>Unlike plastics, wool does not release micro-plastics into our oceans and seas meaning it is safe for our waterways and aquatic wildlife.</p>
	<p>Flame resistance</p> <p>Wool is less flammable than synthetics and does not melt. Also, wool produces less smoke which is not as toxic.</p>		<p>Insulation</p> <p>The natural crimp of wool fibre causes air to be trapped between fibres enabling wool to provide warmth in winter and cool in summer.</p>		<p>Moisture regulation</p> <p>Wool fibre absorbs water vapour decreasing humidity, condensation and mould growth in the home.</p>
	<p>Absorbs pollution</p> <p>Small pores in the wool fibre effectively absorb certain pollutants from the air creating a healthier indoor air environment.</p>		<p>Animal wellbeing</p> <p>Happier sheep produce exceptional wool. New Zealand sheep are treated with the utmost care by our growers and this shows in the quality of the fibre.</p>		<p>Planet friendly</p> <p>Because wool biodegrades fully, using wool reduces the impact on the world's landfills.</p>

Source: <https://www.nzwool.co.nz/about/>

WoolWorks Woolgrease

TYPICAL WOOL GREASE VALUE CHAIN (basic)



Innovative Uses for New Zealand Scoured Wool



Havelock Wool wool insulation





Godfrey Hirst Wool Carpets



Lanaco 100% wool highly functional grease filter

MITRE 10 PARK HAWKE'S BAY

NAPIER CITY COUNCIL
ANNUAL PLAN SUBMISSION
2026/27

**Regional Participation &
Community Infrastructure**

MITRE 10 PARK
HAWKE'S BAY

Mitre 10 Park

Regional Participation & Community Benefit



ATHLETICS

300

~35% Napier



CANOE POLO

650

~30% Napier



HOCKEY

2400

~38% Napier



NETBALL

6400

~55% Napier



TOUCH

1500

~30% Napier

11,000+ Napier memberships across selected regional sports

Across sports where Mitre 10 Park plays a regional role.

Supporting Regional Community Infrastructure

Sustaining participation opportunities already being delivered to Napier residents

- ✓ Existing regional participation opportunities
- ✓ Strong Napier participation across multiple sports
- ✓ Partnership funding supports sustainable provision
- ✓ Operational pressures increasing across community infrastructure
- ✓ Regional infrastructure reduces duplication across the network

NCC Contribution Requested

\$30,000

per annum

Recognising regional participation and community benefit

Sustaining existing regional participation opportunities — not expansion.

Napier City Council | 27 May 2026

Animal Shelter Capital Budget Increase

Additional information for Annual Plan deliberations

Summary

Current approved budget

\$3.85m

Approved by Council on 31 July 2025 for Option 2 – new build at the existing NCC Depot site.

Revised budget request

\$5.35m

Request to amend the budget to reflect developed design and more accurate cost estimates.

Increase requested

\$1.50m

Equivalent to an uplift of about 39% from the current approved budget.

The project to build a new Animal Shelter to meet business needs and improve the working environment and experience for dogs, staff and visitors.

The revised cost reflects design refinement, specialist input and a quantity-surveyed developed design estimate that is materially more accurate than the initial feasibility allowance.

The project team has continued value engineering, including reducing the kennel block area by removing three kennels and removing sprinklers to the kennel block.

Officers state that the current facility is not fit for purpose and continues to present many challenges for the staff who care for the animals.

How the cost estimate has evolved

Council Briefing

At the briefing with Elected Members 5th March 2026, an update on the preliminary design estimate total of **\$5.59 million** was presented.

Key milestones

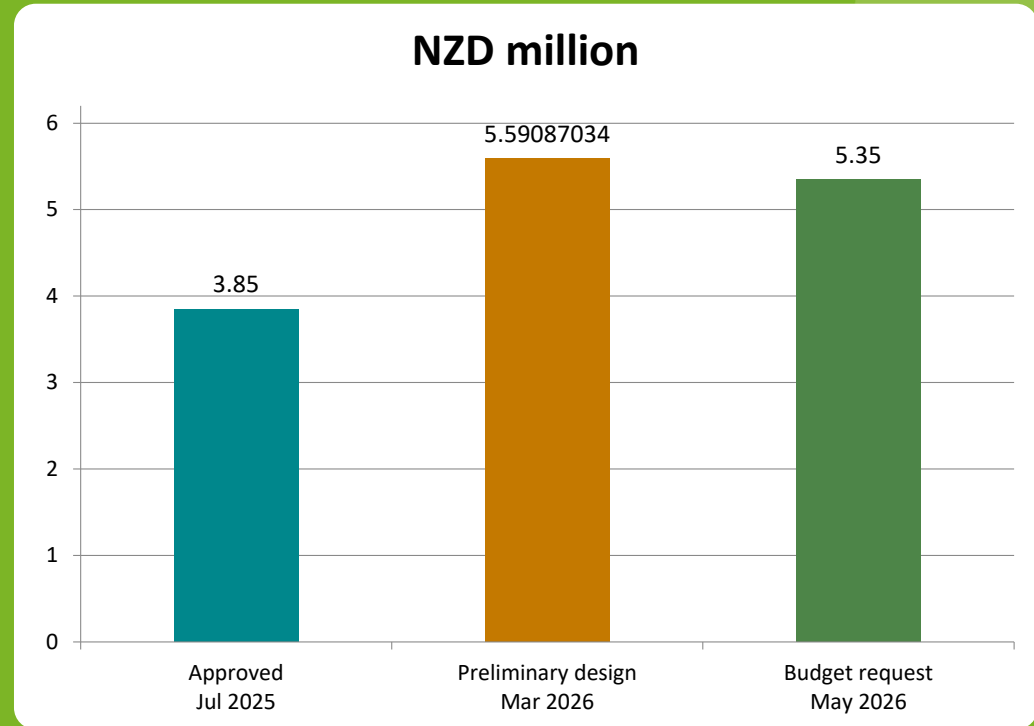
3 March 2025: Feasibility and design services engaged (Etch Architecture).

3 July 2025: Feasibility study and options presented at Council Workshop.

31 July 2025: Council approved Option 2 (new build) with funding of \$3.85m.

5 March 2026: Council briefing advised a preliminary design estimate of \$5.59 million.

18 May 2026: Developed design quantity surveyor estimate completed.



What is driving the increase?

Budget Variance Contributors

- Operational improvements to source potential savings of \$261k.
- NCC costs of \$149k.
- Professional fees of \$322k, including external project management services of \$80k.
- Precast concrete kennel walls add about \$250k–\$300k upfront, but were selected for lower whole-of-life cost, improved durability, hygiene and fire compliance.
- Improved wall protection options and stainless-steel scratch layer substitution (\$3k).
- Improved flooring options (\$78k).
- Unison network alteration and new transformer (\$100k).
- A separate National Fuel Plan contingency of 5% has been included as a line item.

Cost control already applied

- Reduced new kennel block area by removing three kennels (saving identified in the memo: \$203k).
- Sprinklers to the kennel block have been removed (\$80k).
- We note that value engineering has been explored at every stage and that scope has been limited to essential requirements.

Important context for deliberations

The increase is not only market movement; it also reflects whole of life cost, fuller scope definition and more accurate pricing.

Budget Substantiation

Better whole-of-life value

Whole-of-life cost assessment (20 February 2026) found that precast concrete is expected to deliver a lower whole-of-life cost over 50+ years than a timber-framed option.

Estimated whole-of-life saving in the memo: about \$100k-\$150k.

Fit-for-purpose public asset

Precast concrete was also preferred because it better aligns with long-life public infrastructure expectations.

The memo states it provides lower asset risk and reduced long-term maintenance burden.

Operational resilience

Design development has focused on resilience, improved hygiene performance and lower operating costs over time.

The project is intended to reduce the operating cost of the Animal Control activity over the life of the asset.

Bottom line: the memo frames the larger upfront cost as a deliberate investment to reduce lifecycle cost, risk and ongoing maintenance.

Funding context for Annual Plan deliberations

How the activity is funded

50–60%

Fees and charges
(e.g. dog registration)

40–50%

General rates

The project is intended to reduce the operating cost of the Animal Control activity over time.

Because whole-of-life costs have been considered, the proposal asks members to weigh a higher upfront capital outlay against lower long-term costs.

How the increase would be financed

The associated costs for the Animal Shelter new build will be funded through loans, with both loan repayments and interest recovered through rates over a 25-year period.

Officer recommendation and suggested next steps

Officer recommendation: approve increasing 2026/27 capital funding for the Animal Shelter from \$3.85 million to \$5.35 million.

Points that support approval

- Developed design and quantity-surveyed pricing provide a stronger budget basis than the initial feasibility estimate.
- Whole-of-life analysis supports selected materials despite higher upfront cost.
- Value engineering has already been undertaken and scope has been pared back to essential requirements.
- The current facility is not fit for purpose and improvement remains a priority.